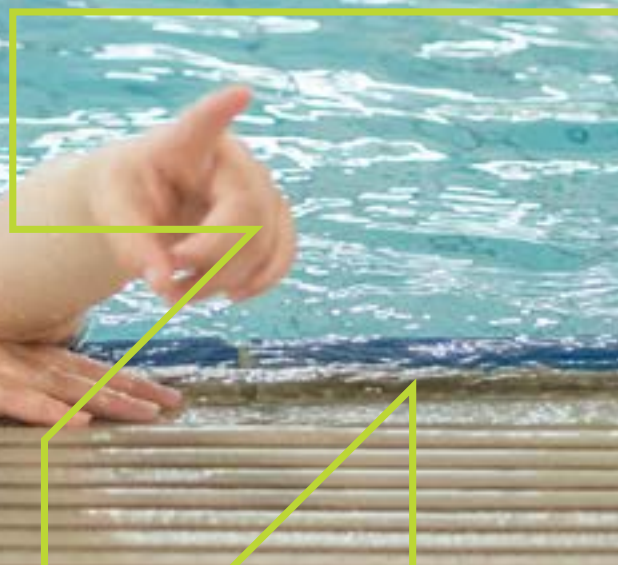


A WAY FORWARD FOR WYNDHAM





INTRODUCTION

Wyndham City Council would like to congratulate all candidates standing at this year's Victorian State Election.

Every election is a choice for voters.

But every election is also a choice for Councils.

Councils can allow an election to unfold as spectators or as advocates.

At Wyndham City Council, we believe that this State election represents a critical opportunity to address the longstanding needs of our community.

We hear from our residents who are stuck in traffic, who can't access a train station, who can't get their kids in a sports club or swimming lessons due to capacity issues, or who are waiting too long in Emergency at the Werribee Mercy.

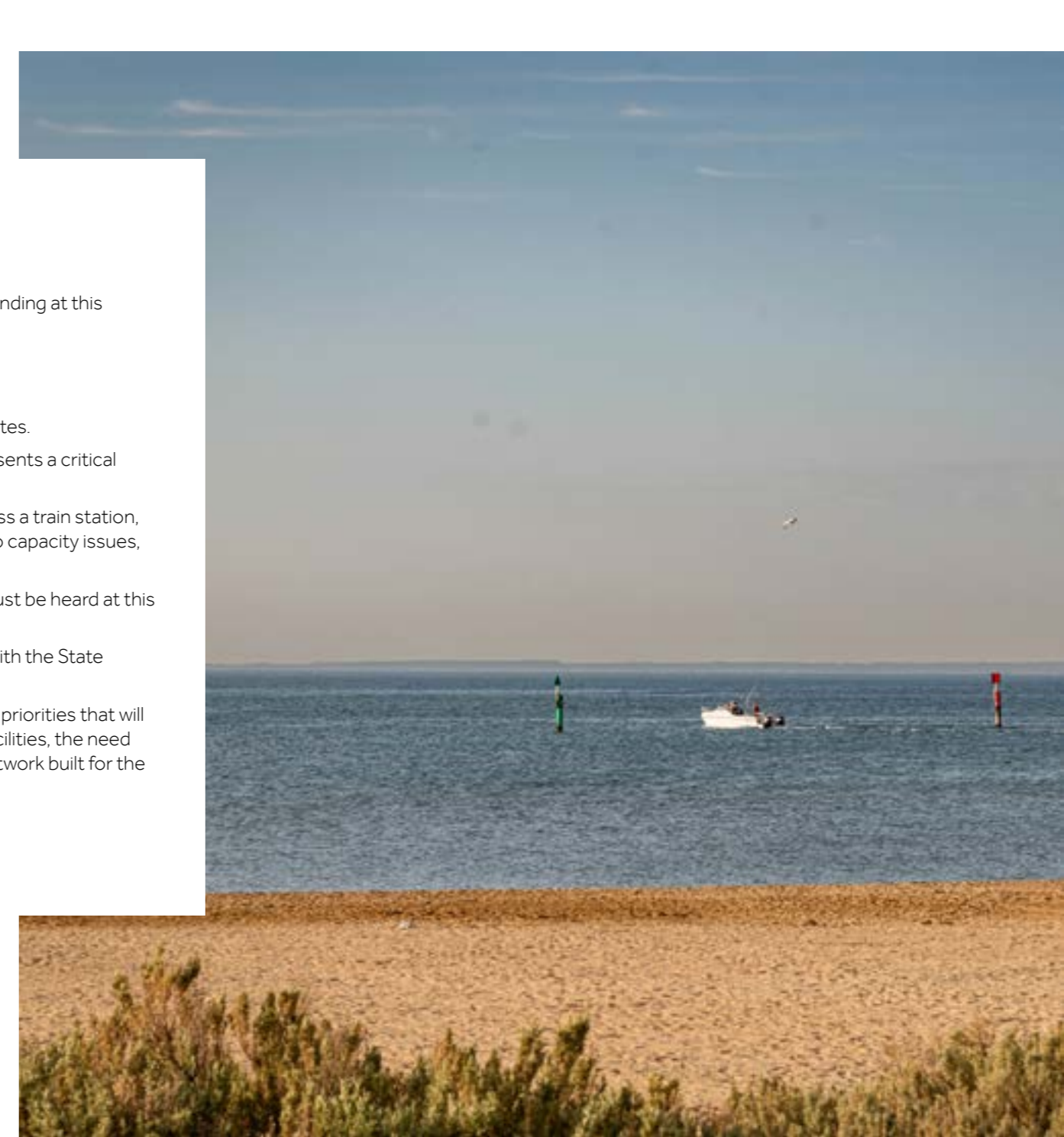
We know the Wyndham community faces challenges and these must be heard at this Victorian State Election.

All of our challenges can be addressed. We just need partnership with the State Government to do that.

In this election brochure, we have outlined game-changing project priorities that will tangibly address issues of traffic congestion, lack of community facilities, the need to provide new transportation options and provide a healthcare network built for the long term.

At this election, we are offering A Way Forward for Wyndham.

Let's work together to deliver this.



WYNDHAM STATISTICS



POPULATION

Wyndham is one of Victoria's fastest growing areas



Wyndham will grow to **382,000** residents by 2030



Wyndham will grow to **458,000** residents by 2040



5296 babies were born in **Wyndham** in 2024/25



Wyndham is expecting a **30%** increase in births by 2040

AQUATIC CENTRES

Wyndham needs **1 per 330,000** residents

For comparison,

Greater Geelong **1 per 43,000** residents

Yarra Ranges **1 per 19,000** residents

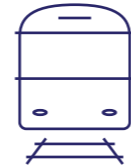
Wyndham residents have **4-8 times less** access to aquatic facilities than Geelong

Proportion of aquatic centres per resident



NEW TRAIN STATIONS

Wyndham needs **3 new** train stations over the next **15 years**



PERFORMING ARTS

Wyndham's west is dramatically under-served for performing arts

20% of population, **5%** of theatre seats



TRAVEL TIMES

Over half of all residents commute for more than **1 hour** per day. The Majority of **Wyndham** residents spend over **5 hours** per week commuting

Wyndham travel times are on par with or worse than other outer metro growth corridors

Werribee peak travel time: up to **85 minutes** to the CBD



Only **10%** of **Wyndham** residents take the train or bus to work.

Despite this, **2 of the top 4** busiest V/Line stations are located in Wyndham.

Tarneit is the second busiest V/Line station

JOBS

Wyndham holds just **3%** of metropolitan jobs despite being one of Melbourne's largest population centres. Most residents must leave the city to find work



But there are some good signs:

The number of local businesses grew **75%** in five years



LIBRARIES

Wyndham provides less than **half** the community space required for its population

Wyndham has a major **shortfall** in local places to meet, learn and connect



OUTER METROPOLITAN RING ROAD (OMR)

REQUEST: COMMIT TO THE DELIVERY OF THE OMR

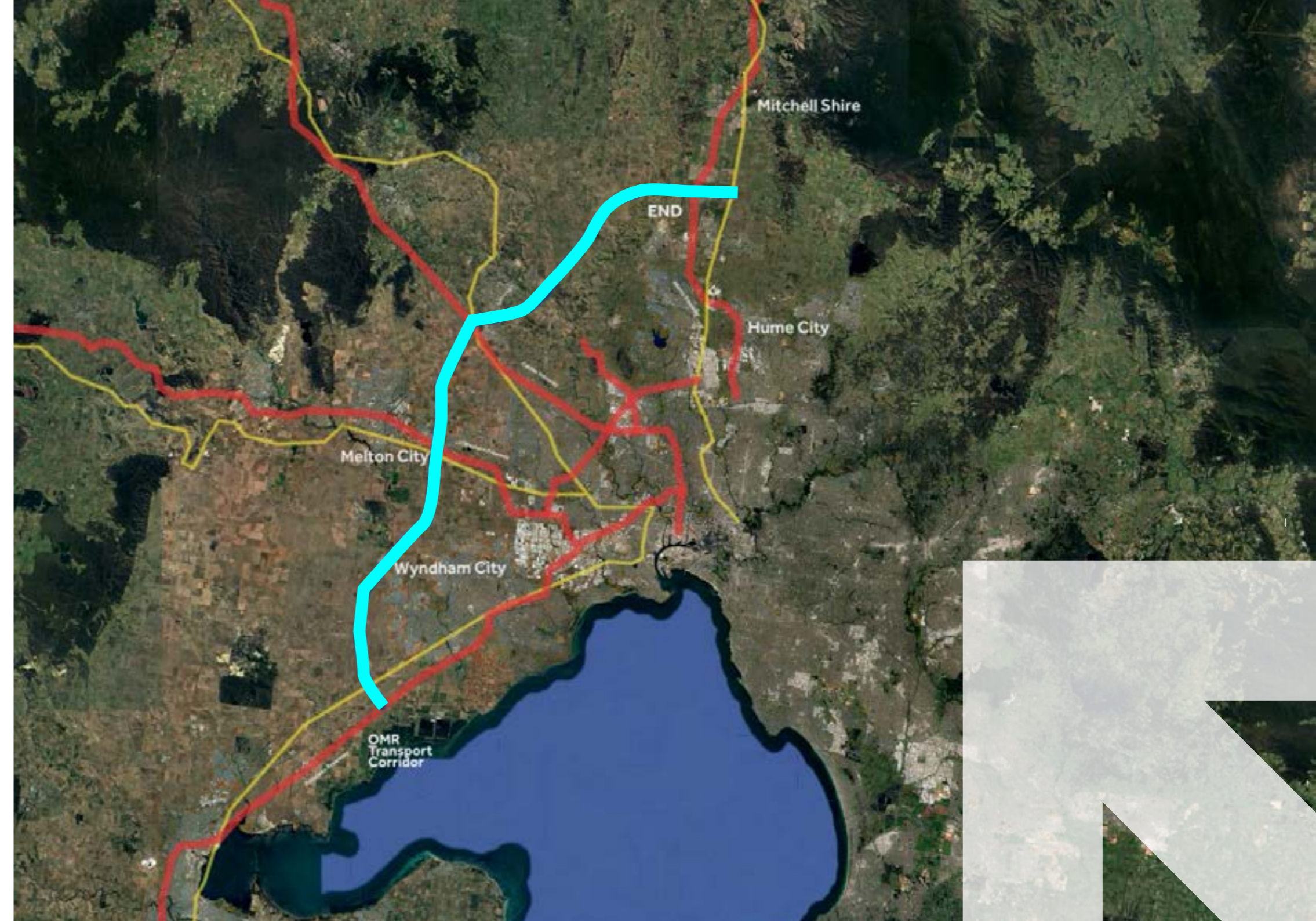
The Outer Metropolitan Ring (OMR) Road is a proposed 100-kilometre high-speed transport link from the North to the West. It would combine a proposed freeway with railway tracks for interstate freight and high-speed passenger trains.

In 2008, the Brumby Government announced the Victorian Transport Plan (VTP), which detailed a catalogue of critical transportation projects that Melbourne and Victoria needs to manage growth and liveability. The VTP included the Metro Tunnel, the West Gate Tunnel, the North East Link, Peninsula Link and the Regional Rail Link. All of these are completed or almost completed. The Outer Metropolitan Ring Road is the final project to be delivered.

The OMR will give the West of Melbourne a critical connection to the North, and take thousands of cars off local roads. The OMR will lift productivity and support manageable growth in the West through improved transport connectivity between key transport hubs such as Melbourne Airport, Avalon Airport, the Port of Geelong and the proposed Western Intermodal Freight Terminal and proposed Bay West Port Precinct.

The 2008 Planning Assessment Report by VicRoads describes the road as providing "the backbone for the future transport network planning in Melbourne's growing northern and western suburbs."

At this election, it's time for all candidates to commit to the Outer Metropolitan Ring Road.





Indicative depiction

WYNDHAM RING ROAD

REQUEST: \$85 MILLION FUNDING TOWARDS THE CONSTRUCTION OF THE NEXT STAGE OF THE WYNDHAM RING ROAD. THIS WILL MATCH THE FEDERAL GOVERNMENT CONTRIBUTION ANNOUNCED AT THE FEDERAL ELECTION 2025.

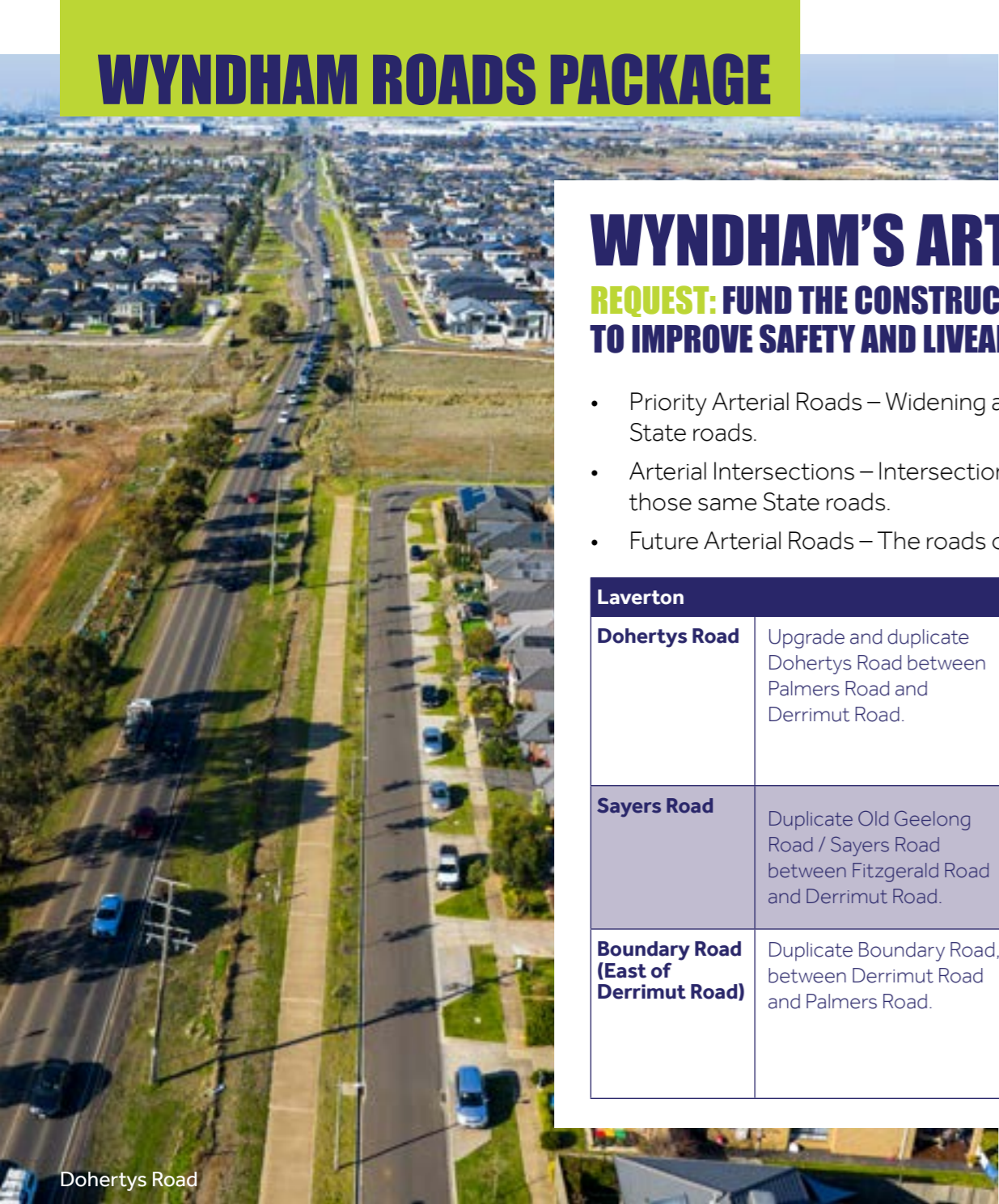
Wyndham is experiencing rapid population growth and roads are currently congested and at capacity. The suburbs of Werribee, Wyndham Vale and Manor Lakes are currently home to 96,000 people, with an additional 42,000 residents expected to be added over the next 20 years. The suburbs of Tarneit and Truganina are currently home to 111,000 people with an additional 70,000 residents to be added over the next 20 years. This will ensure that for Wyndham residents, congestion will only continue to grow.

The only current route to travel between Wyndham West and Wyndham North is through Heaths Road which is already heavily congested during peak periods and excessively far for motorists to travel. **The Wyndham Ring Road provides an alternative road link between these two major growth fronts.**

The Wyndham Ring Road expands on current work underway on the Ison Road Overpass by building a new bridge over the Werribee River to connect Armstrong and Hobbs Road in Wyndham Vale to Sayers Road in Tarneit. This work will future-proof the road network in one of the fastest growing areas in the country.

At the Federal Election 2025, the Federal Government contributed \$85 million towards the next stage of the Wyndham Ring Road. At this election, it is time for the State Government to make its contribution to this critical infrastructure project.





WYNDHAM'S ARTERIAL ROADS

REQUEST: FUND THE CONSTRUCTION OF PRIORITY ROADS TO IMPROVE SAFETY AND LIVEABILITY

- Priority Arterial Roads – Widening and resurfacing of current Declared State roads.
- Arterial Intersections – Intersection upgrades to reduce bottlenecks on those same State roads.
- Future Arterial Roads – The roads of the future.

Laverton		
Dohertys Road	Upgrade and duplicate Dohertys Road between Palmers Road and Derrimut Road.	Dohertys Road is a major east-west arterial road running through the Wyndham local government area, connecting key employment and residential precincts in Truganina, Laverton North and Hoppers Crossing.
Sayers Road	Duplicate Old Geelong Road / Sayers Road between Fitzgerald Road and Derrimut Road.	Upgrade and duplicate Old Geelong Road / Sayers Road between Fitzgerald Road and Derrimut Road, with the priority being between Palmers Road and Derrimut Road.
Boundary Road (East of Derrimut Road)	Duplicate Boundary Road, between Derrimut Road and Palmers Road.	Upgrading Boundary Road (east of Derrimut Road) to a duplicated arterial standard is critical to accommodating current and future traffic volumes, significantly easing congestion across Wyndham's growing transport network.

Dohertys Road



Point Cook		
Point Cook Road	Duplicate Point Cook Road from Aviation Road to Princes Freeway interchange.	The duplication of Point Cook Road would benefit the community by reducing congestion and road safety risks, improve pedestrian safety, and supporting current and future growth in the area providing vital community connections.

Werribee		
Duncans Road	Duncans Road from Synnot Street intersection to Princes Freeway Interchange.	The intersection of Duncans Rd/ Edwards Rd requires signalisation due to traffic safety issues. The Duncans Rd/Synnot Street intersection requires upgrading to reduce traffic running through residential areas..
Heaths Road	Upgrade Heaths Road between Tarneit Road and Ballan Road.	Upgrade and duplicate Heaths Road between Tarneit Road and Ballan Road and replace roundabouts with signalised intersections.
Ballan Road	Duplication of Ballan Road from Armstrong Road to Bolton Road.	The project will reduce congestion, improve road safety and pedestrian access, and support current and future growth by strengthening vital community connections.

Tarneit		
Derrimut Road/ Hogans Road	Upgrade the Derrimut/ Hogans Road Roundabout	Intersection Upgrade - Replacement of roundabout with traffic signals to Reduce congestion, improve road safety risk and improved pedestrian safety.



Derrimut Road

NEW RAILWAY STATIONS FOR WYNDHAM, AND A REDEVELOPMENT OF THE WERRIBEE RAILWAY STATION

REQUEST: \$165 MILLION TO DELIVER THE NEW TRUGANINA RAILWAY STATION

Truganina will grow from 35,000 residents in 2021 to an estimated 56,000 by 2046. Many existing Truganina residents often commute to the city for work, study and recreational activities.

Tarneit Railway Station is currently the only station on the northern side of Wyndham. As a result, the station is crowded and suffers from congestion in the car park and nearby roads. Truganina Railway Station will ease the pressure on Tarneit Railway Station and the new West Tarneit Railway Station and surrounding roads.

The State Government has already planned this station. At this election, we need a commitment to deliver the Truganina Railway Station.

REQUEST: \$50 MILLION FOR THE REDEVELOPMENT OF THE WERRIBEE RAILWAY STATION

Werribee Railway Station is in the heart of Wyndham.

It represents one of the oldest stations in the West, and provides connection to thousands of our residents.

But for such an important connection, this station precinct suffers from inadequate commuter parking, poor bus interchange facilities, and limited accessibility for people with disabilities.

The precinct is outdated and hasn't been updated in 40 years.

At this election, the State Government must commit to a full redevelopment of the Werribee Railway Station to ensure a station that is safe, accessible and welcoming for everyone.

REQUEST: PLANNING MONEY FOR THE FUTURE BLACK FOREST ROAD RAILWAY STATION AND SAYERS ROAD RAILWAY STATION

Wyndham is growing, and there is a fast-approaching need for the delivery of stations that have formed discussion for transportation options for years.

With the current construction on West Tarneit Railway Station and planning underway for the Truganina Railway Station, the final two stations needing commitment from the State Government are the Black Forest Road Railway Station and the Sayers Road Railway Station.

At this election, the State Government must commit planning money for the delivery of these railway stations.





ELECTRIFICATION OF THE WYNDHAM VALE LINE – AND SPUR

REQUEST: FUNDING TOWARDS THE ELECTRIFICATION OF THE REGIONAL RAIL LINK AND CONNECTION TO THE WERRIBEE LINE

Wyndham is currently served by regional V/Line trains rather than electrified metropolitan services.

Geelong-bound trains on the Regional Rail Link (RRL) stop at suburban stations such as Tarneit and Wyndham Vale, both which are consistently among the busiest stations on the V/Line network. Commuters from Melbourne's western suburbs now account for approximately 40% of all V/Line boardings outside Southern Cross Station.

But V/Line trains are not designed for high-volume suburban commuting. Wyndham's rapidly expanding communities require integration into the metropolitan rail network.

This electrification of the Regional Rail Link must also be accompanied by a direct rail connection between the RRL and the Werribee Line. The Victorian Government's Western Rail Plan proposes a 'spur' from Wyndham Vale to Werribee as part of its western section. This will ensure the entire benefits of electrification are realised for all West residents.

At this election, our community needs a commitment on the electrification of our rail line.





FIX OUR WERRIBEE MERCY HOSPITAL

REQUEST: WYNDHAM REQUIRES A COORDINATED, LONG-TERM STATE INVESTMENT IN LOCAL HEALTH INFRASTRUCTURE AND SERVICE DELIVERY, INCLUDING:

- **The completion of the expansion of Mercy Hospital's Emergency Department and funding to fix the Mercy Hospital for the long term by working to meet current demand and future growth**
- **A new mental health service provision in Truganina, Wyndham's North, where gaps are most severe**

Wyndham faces a dual health challenge: a lack of available services and, in many locations, poor spatial access to existing ones. This is contributing to worsening health outcomes and growing pressure on already stretched facilities. We need to incentivise people to work in our health network.

Key findings of a recent Health Needs Assessment, conducted by Wyndham City:

- **Mental health needs are acute** across almost all priority groups:
- Mental Health is the most prevalent long term health condition in people with a disability (29.4%), young people aged 8–24 (8.6%), women (29.7%), and First Nations residents (18.1%).
- People from culturally and linguistically diverse backgrounds are less likely to seek help due to culturally inappropriate or poorly promoted services.
- **Hospital infrastructure and capacity are insufficient:**
- Wyndham currently needs 797 public hospital beds (2023 ERP) and will require over 1,200 beds by 2046 to meet projected demand.
- While the Mercy Hospital emergency department expansion is underway, current wait times of up to 90 minutes and high rates of preventable hospitalisations indicate deep systemic strain.
- The Point Cook Community Hospital (due 2026) will help, but its planned capacity remains unclear.

At this election, all candidates must commit to the long term health needs of our growing community.

RIVERDALE AQUATIC CENTRE

REQUEST: \$50 MILLION CONTRIBUTION TO A NEW AQUATIC CENTRE FOR WYNDHAM

Aquatic centres support the development of social connections and play a critical role in the education around water safety. They offer an opportunity for residents to stay fit and keep healthy. However, the development of housing growth in Wyndham has outpaced the development of aquatic and sports infrastructure.

Analysis conducted by Infrastructure Victoria found Wyndham has one Aquatic and Recreation Centre (ARC) for approximately 150,000 people, compared to the City of Greater Geelong which has one ARC for approximately 75,000 people.

The development of the proposed Riverdale Aquatic Centre will be a significant partnership and will support the needs of Wyndham's growing population – increasing community wellbeing, strengthening community connections and improving community safety. At this election, our community needs a commitment to a new aquatic centre.





TARNEIT INDOOR SPORTS FACILITY

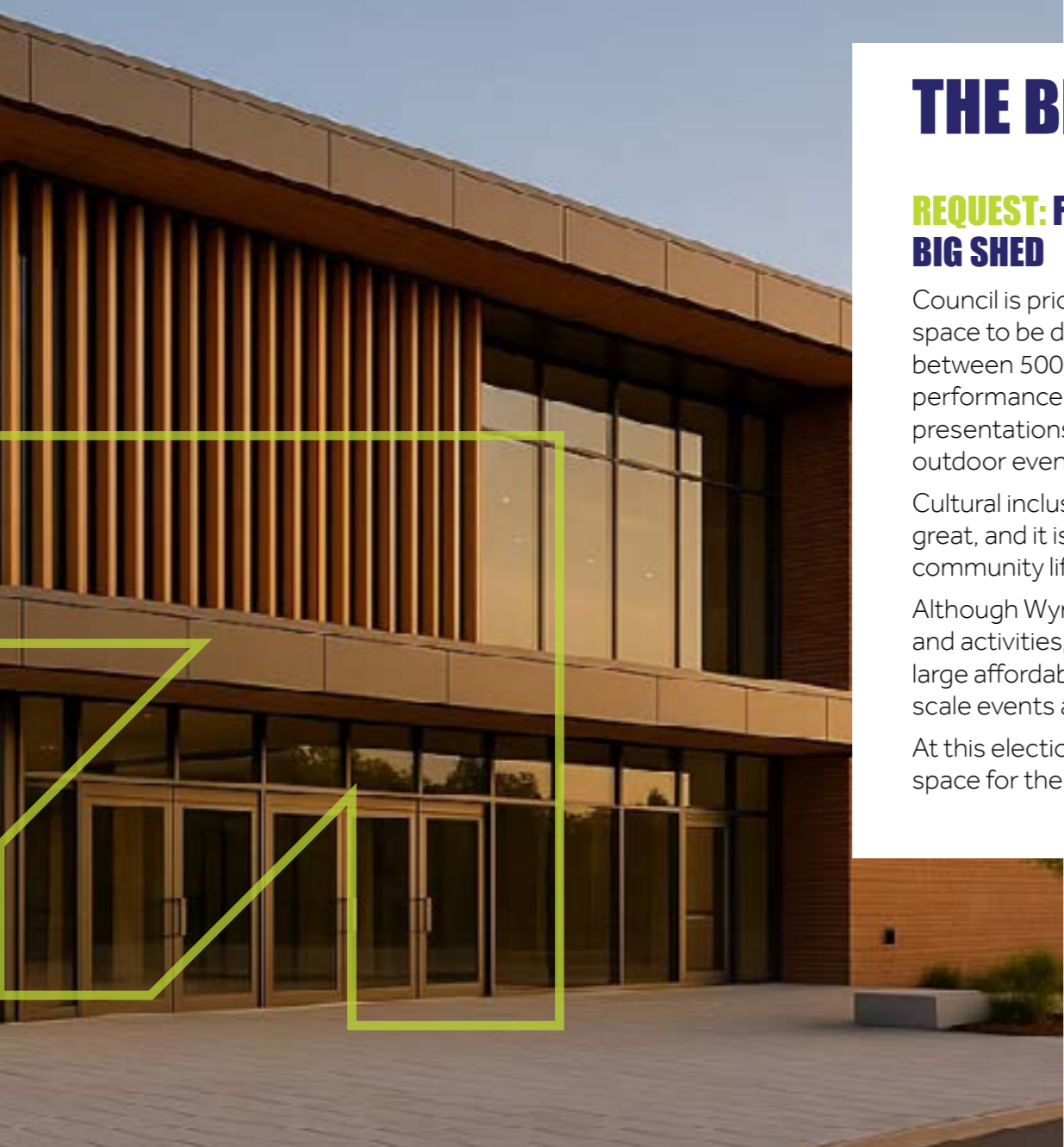
REQUEST: \$30 MILLION FUNDING TOWARDS THE CONSTRUCTION OF THE TARNEIT INDOOR SPORTS FACILITY

Rapid population growth in Wyndham has outpaced the development of community and sports infrastructure. Wyndham is underserved by indoor sports facilities, meaning there is limited opportunities to participate in sports such as Basketball, Volleyball, Badminton. Eagle Stadium opened in 2017; however, it has already reached capacity. This shows the demand for indoor basketball facilities within Wyndham as research conducted for the Wyndham Sports Strategy found that basketball is one of the most popular organised sports in Wyndham.

The suburb of Tarneit is experiencing rapid population growth, with significant demand for high-quality sports and recreation facilities. Current indoor sports infrastructure is insufficient to meet the needs of this growing, diverse community. We've heard from Wyndham residents about how important sport and recreation is to their health, wellbeing and connection to our community. The Tarneit Indoor Sport Facility will establish a major sport, health and wellbeing hub in Wyndham's north and provide opportunities for community members to participate in indoor sport, gymnastics, dance and fitness activities.

This project will create local jobs, stimulate economic activity, and provide long-term social and recreational benefits for the community. Funding for the Tarneit Indoor Sports Facility is a critical investment in the community infrastructure needed to support Wyndham's growth.





THE BIG SHED

REQUEST: FUNDING TOWARDS THE CONSTRUCTION OF THE BIG SHED

Council is prioritising investment in the delivery of a new community event space to be delivered in Truganina. This new space will be able to cater for between 500-1,500 people for cultural and religious events and festivals, performances and concerts, community celebrations and gatherings, presentations and awards nights, fundraising, markets, exhibitions and outdoor events.

Cultural inclusion and diversity are important factors in what makes a city great, and it is crucial that all people in Wyndham can fully participate in community life.

Although Wyndham provides a range of community facilities for services and activities, it has become evident that there is a shortage in access to large affordable and flexible multipurpose spaces that can be used for large scale events and gatherings.

At this election, let's work together to deliver a new community events space for the West.

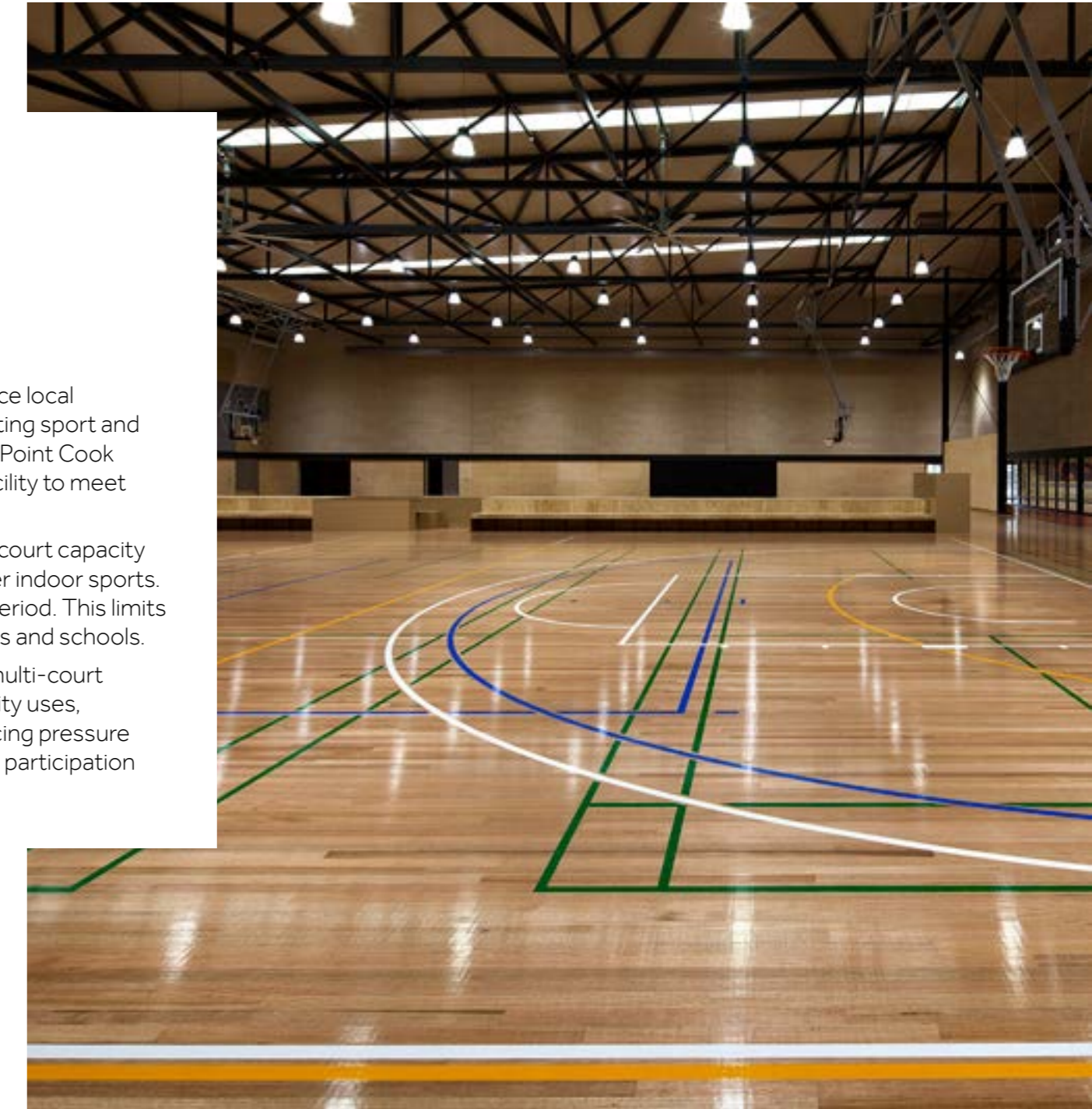
POINT COOK INDOOR SPORTS CENTRE

REQUEST: \$250,000 TOWARDS PLANNING OF THE POINT COOK INDOOR SPORTS CENTRE

Rapid population growth in Point Cook continues to outpace local infrastructure delivery, placing significant pressure on existing sport and recreation facilities. Despite its size and growth trajectory, Point Cook doesn't have a dedicated multi-court indoor recreation facility to meet current and future demand.

Local indoor sport demand significantly exceeds available court capacity across the municipality, particularly for basketball and other indoor sports. Existing facilities operate at or near capacity during peak period. This limits participation opportunities and impacts local clubs, families and schools.

The Point Cook Indoor Sports Centre would incorporate multi-court basketball and complementary indoor sport and community uses, providing local access to indoor sport infrastructure, reducing pressure on existing facilities and supporting long-term community participation outcomes.





POINT COOK HOMESTEAD PRECINCT

REQUEST: \$8 MILLION TO REPAIR, REDEVELOP AND ACTIVATE THE POINT COOK HOMESTEAD PRECINCT

The Point Cook Homestead is a historic bluestone residence within Point Cook Coastal Park that was built in 1857.

As one of the oldest buildings in the Wyndham area, the Homestead has tremendous potential for future usage and represents an opportunity to preserve critical history of Melbourne's West.

In late 2024 the Homestead was damaged by vandalism. The State Government has taken steps to secure and protect the buildings while further restoration plans progress. The Victorian Managed Insurance Authority (VMIA) has approved the scope of repair works, including replacement and repair of all windows, frames and doors that were damaged by vandalism.

Unfortunately, even after these repair works are completed, the Homestead will remain boarded up for the foreseeable future.

To preserve our region's history, we are asking the State Government for a contribution to activate this site for the long term. With this contribution, and partnership, the community can create a vision for the future of the Point Cook Homestead.

OUTDOOR NETBALL COURT CANOPY COVERS

REQUEST: DELIVERY OF CANOPY COVERS FOR THE OUTDOOR NETBALL COURTS AT EAGLE STADIUM AND MOSSFIEL RESERVE.

Investment in canopy covers at Eagle Stadium and Mossfiel Reserve will ensure reliable, year-round access, reduce weather related disruptions and support growing participation in community sport.



SUPPLEMENTARY ASKS

BUSES

ASK: New and expanded routes in our growth areas, more frequent services on existing routes and bus shelters to improve safety and comfort.

SCHOOLS

ASK: New government schools and upgrades to existing schools to keep pace with Wyndham's population growth.

LIBRARIES

ASK: Fairer State Government funding to deliver modern, accessible library services for Wyndham's growing community.

GROWING SUBURBS FUND

ASK: The reinstatement and expansion of the Growing Suburbs Fund (GSF), which began as \$50 million per annum in 2015 and has now ended.

FURTHER INFORMATION

For more information or to receive a copy of this document in an alternate format, please contact:

WYNDHAM CITY COUNCIL

45 Princes Highway, Werribee, VIC 3030

Phone: 1300 023 411

Translating and Interpreting services: 13 14 50

