

## **Dwelling/Unit Numbers - October 2025**

### Dwellings and units

Building permits for 372 dwellings and 16 units in Wyndham were issued in October 2025, as shown in the attached table and graphs.

The units are in:

- Werribee (12)
- Tarneit (4)

### Key observations

- The monthly number of dwellings/units was 388
- The 3-month cumulative figure was 1,075
- The 6-month cumulative figure was 2,179
- The 12-month cumulative figure was 4,099

### Comments

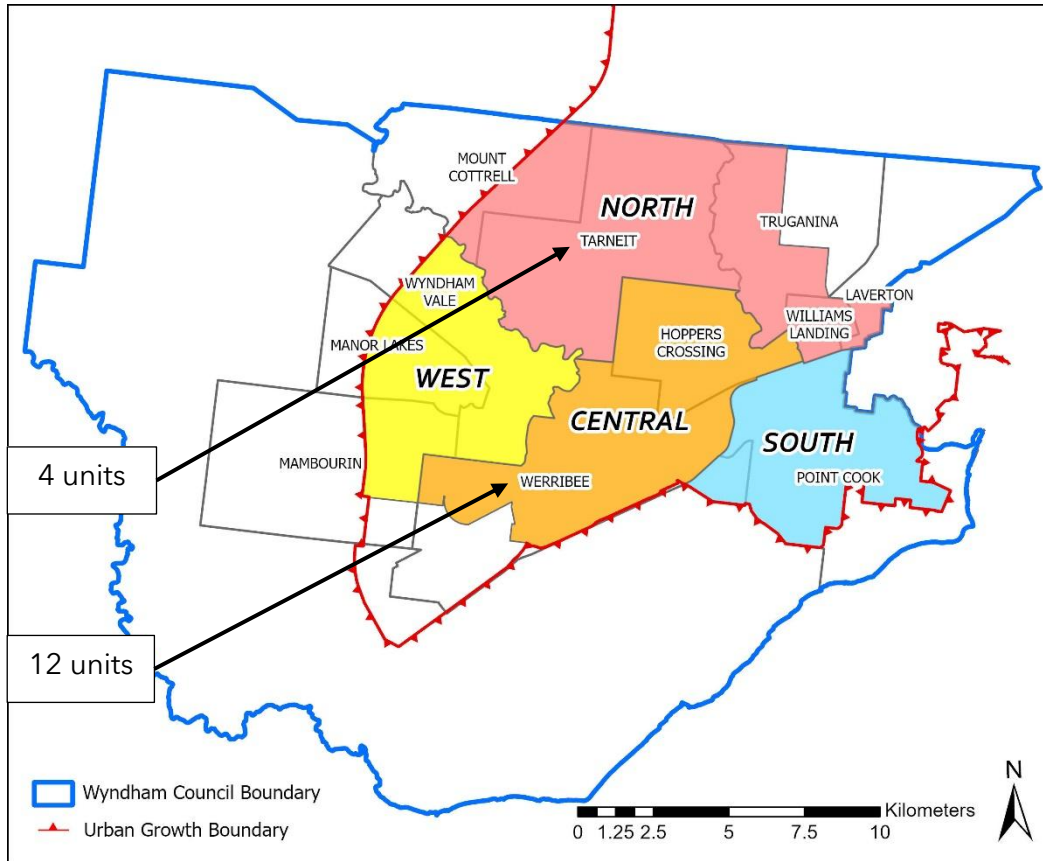
The October 2025 distribution of dwellings/units between Wyndham's suburbs is summarised in the table below:

| <b>Region</b>  | <b>Total percentage</b> | <b>Suburb</b>           | <b>Percentage</b> |
|----------------|-------------------------|-------------------------|-------------------|
| <b>North</b>   | 40.4%                   | <b>Laverton</b>         | 0%                |
|                |                         | <b>Mount Cottrell</b>   | 1.3%              |
|                |                         | <b>Tarneit</b>          | 37%               |
|                |                         | <b>Truganina</b>        | 2.1%              |
|                |                         | <b>Williams Landing</b> | 0%                |
| <b>Central</b> | 17.5%                   | <b>Hoppers Crossing</b> | 0.5%              |
|                |                         | <b>Werribee</b>         | 17%               |
| <b>West</b>    | 40%                     | <b>Manor Lakes</b>      | 10%               |
|                |                         | <b>Mambourin</b>        | 17%               |
|                |                         | <b>Wyndham Vale</b>     | 13%               |
| <b>South</b>   | 2.1%                    | <b>Point Cook</b>       | 2.1%              |

The three suburbs with the highest number of dwellings/units in October 2025 are:

1. Tarneit (145)
2. Mambourin (65)
3. Werribee (64)

The North region of Wyndham (Tarneit, Truganina, Williams Landing, Laverton and Mount Cottrell) had the highest number of dwellings/units in October 2025 (158).



**Queries may be directed to Council’s Strategic Planning Unit. This bulletin relies on data from Council’s Building Services Department, WCC Proclaim Profiler Reports and analysis by Building Services and the Strategic Planning Unit.**

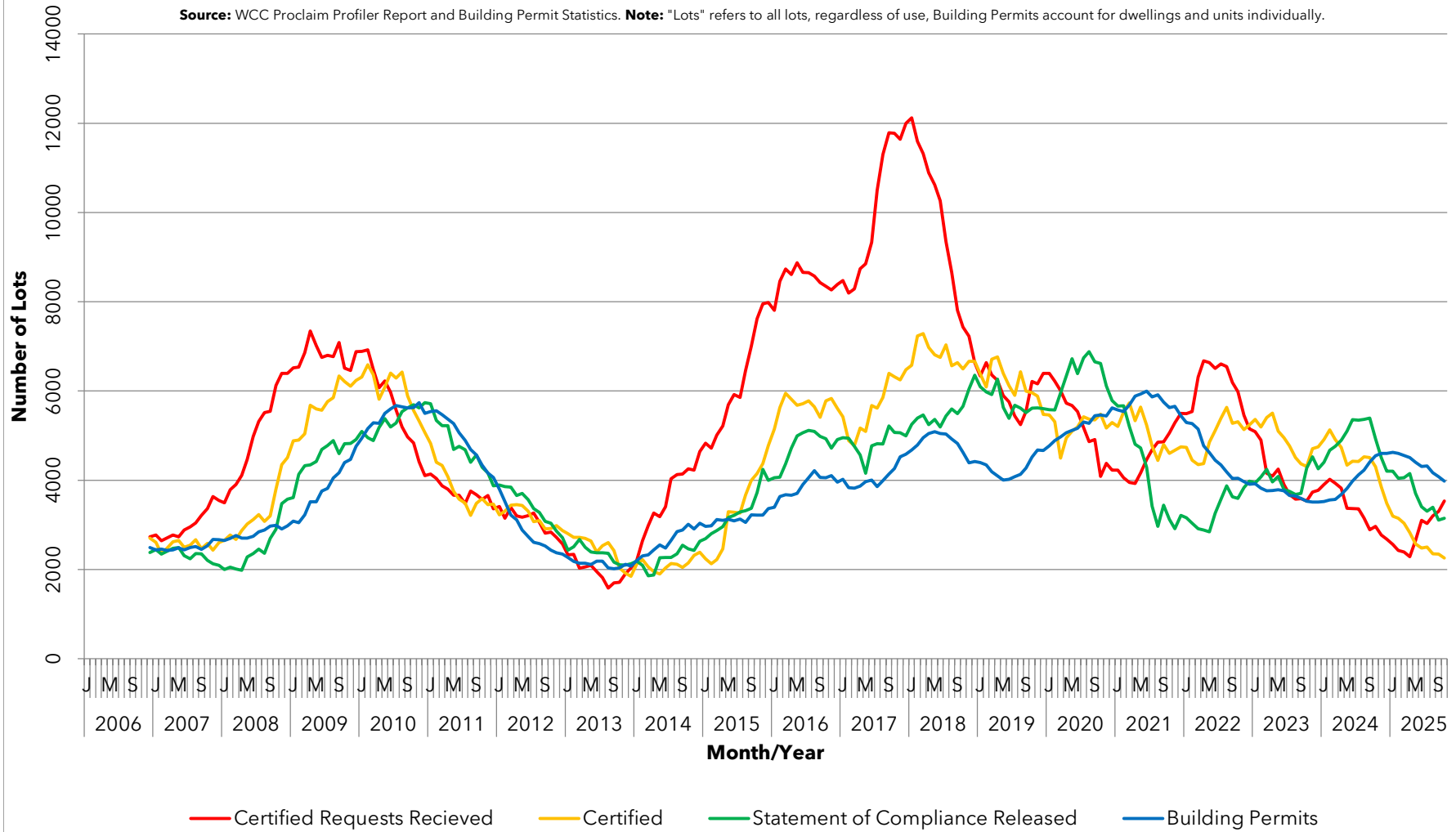
| YEAR        | 3, 6 and 12 MONTH RUNNING TOTALS            | NUMBER OF DWELLINGS/UNITS APPROVED BY BUILDING PERMITS (By Month) |                                    |                                    |                                    |                                    |                                    |                                    |                                    |                                    |                                    |                                    |                                    | YEARLY TOTAL |  |  |             |
|-------------|---|---|------------------------------------|------------------------------------|------------------------------------|------------------------------------|------------------------------------|------------------------------------|------------------------------------|------------------------------------|------------------------------------|------------------------------------|------------------------------------|--------------|--|--|-------------|
|             |   | J   | F                                  | M                                  | A                                  | M                                  | J                                  | J                                  | A                                  | S                                  | O                                  | N                                  | D                                  |              |  |  |             |
| <b>2001</b> |   |   |                                    |                                    |                                    |                                    |                                    |                                    |                                    |                                    |                                    |                                    |                                    |              |  |  | <b>2031</b> |
| <b>2002</b> | THREE MONTHS<br>SIX MONTHS<br>TWELVE MONTHS | <b>126</b><br>616<br>1297<br>2061                                 | <b>249</b><br>645<br>1248<br>2194  | <b>216</b><br>591<br>1304<br>2291  | <b>224</b><br>689<br>1305<br>2396  | <b>267</b><br>707<br>1352<br>2516  | <b>239</b><br>730<br>1445<br>2635  | <b>250</b><br>756<br>1437<br>2742  | <b>241</b><br>730<br>1404<br>2685  | <b>183</b><br>674<br>1449<br>2708  | <b>269</b><br>693<br>1449<br>2754  | <b>196</b><br>648<br>1378<br>2730  | <b>182</b><br>647<br>1321<br>2642  |              |  |  | <b>2642</b> |
| <b>2003</b> | THREE MONTHS<br>SIX MONTHS<br>TWELVE MONTHS | <b>138</b><br>516<br>1209<br>2654                                 | <b>221</b><br>541<br>1189<br>2626  | <b>278</b><br>637<br>1284<br>2688  | <b>265</b><br>764<br>1280<br>2729  | <b>212</b><br>755<br>1296<br>2674  | <b>252</b><br>729<br>1366<br>2687  | <b>291</b><br>755<br>1519<br>2728  | <b>214</b><br>733<br>1512<br>2701  | <b>228</b><br>797<br>1462<br>2746  | <b>355</b><br>805<br>1552<br>2832  | <b>222</b><br>807<br>1562<br>2858  | <b>230</b><br>807<br>1540<br>2906  |              |  |  | <b>2906</b> |
| <b>2004</b> | THREE MONTHS<br>SIX MONTHS<br>TWELVE MONTHS | <b>113</b><br>565<br>1362<br>2881                                 | <b>253</b><br>596<br>1401<br>2913  | <b>164</b><br>530<br>1337<br>2799  | <b>285</b><br>702<br>1267<br>2819  | <b>288</b><br>737<br>1333<br>2895  | <b>249</b><br>822<br>1445<br>2892  | <b>206</b><br>743<br>1396<br>2807  | <b>204</b><br>659<br>1439<br>2797  | <b>207</b><br>617<br>1439<br>2776  | <b>218</b><br>629<br>1372<br>2639  | <b>255</b><br>680<br>1339<br>2672  | <b>172</b><br>645<br>1262<br>2614  |              |  |  | <b>2614</b> |
| <b>2005</b> | THREE MONTHS<br>SIX MONTHS<br>TWELVE MONTHS | <b>117</b><br>544<br>1173<br>2618                                 | <b>168</b><br>457<br>1137<br>2533  | <b>130</b><br>415<br>1060<br>2499  | <b>243</b><br>541<br>1085<br>2457  | <b>215</b><br>588<br>1045<br>2384  | <b>305</b><br>763<br>1178<br>2440  | <b>192</b><br>712<br>1253<br>2426  | <b>169</b><br>666<br>1254<br>2391  | <b>192</b><br>553<br>1316<br>2376  | <b>192</b><br>553<br>1265<br>2350  | <b>242</b><br>626<br>1292<br>2337  | <b>175</b><br>609<br>1162<br>2340  |              |  |  | <b>2340</b> |
| <b>2006</b> | THREE MONTHS<br>SIX MONTHS<br>TWELVE MONTHS | <b>161</b><br>578<br>1131<br>2384                                 | <b>202</b><br>538<br>1164<br>2418  | <b>230</b><br>601<br>1202<br>2518  | <b>169</b><br>614<br>1179<br>2444  | <b>215</b><br>614<br>1152<br>2444  | <b>184</b><br>568<br>1161<br>2323  | <b>214</b><br>613<br>1214<br>2345  | <b>240</b><br>638<br>1252<br>2416  | <b>268</b><br>722<br>1290<br>2416  | <b>205</b><br>713<br>1326<br>2505  | <b>216</b><br>689<br>1327<br>2479  | <b>188</b><br>609<br>1331<br>2492  |              |  |  | <b>2492</b> |
| <b>2007</b> | THREE MONTHS<br>SIX MONTHS<br>TWELVE MONTHS | <b>112</b><br>516<br>1229<br>2443                                 | <b>219</b><br>519<br>1208<br>2460  | <b>200</b><br>531<br>1140<br>2430  | <b>178</b><br>597<br>1113<br>2439  | <b>259</b><br>637<br>1156<br>2483  | <b>142</b><br>579<br>1110<br>2441  | <b>264</b><br>665<br>1262<br>2491  | <b>266</b><br>672<br>1309<br>2517  | <b>201</b><br>731<br>1310<br>2450  | <b>286</b><br>753<br>1418<br>2531  | <b>360</b><br>847<br>1519<br>2675  | <b>181</b><br>827<br>1558<br>2668  |              |  |  | <b>2668</b> |
| <b>2008</b> | THREE MONTHS<br>SIX MONTHS<br>TWELVE MONTHS | <b>93</b><br>634<br>1387<br>2649                                  | <b>266</b><br>540<br>1387<br>2696  | <b>267</b><br>626<br>1453<br>2763  | <b>119</b><br>652<br>1286<br>2704  | <b>259</b><br>645<br>1185<br>2704  | <b>184</b><br>562<br>1188<br>2746  | <b>363</b><br>806<br>1458<br>2845  | <b>306</b><br>853<br>1498<br>2885  | <b>293</b><br>962<br>1524<br>2977  | <b>299</b><br>898<br>1704<br>2990  | <b>280</b><br>872<br>1725<br>2910  | <b>250</b><br>829<br>1791<br>2979  |              |  |  | <b>2979</b> |
| <b>2009</b> | THREE MONTHS<br>SIX MONTHS<br>TWELVE MONTHS | <b>200</b><br>730<br>1628<br>3086                                 | <b>234</b><br>684<br>1556<br>3054  | <b>439</b><br>873<br>1702<br>3226  | <b>412</b><br>1085<br>1815<br>3519 | <b>262</b><br>1113<br>1797<br>3522 | <b>423</b><br>1097<br>2189<br>3761 | <b>419</b><br>1104<br>2490<br>3817 | <b>535</b><br>1377<br>2466<br>4046 | <b>415</b><br>1369<br>2582<br>4168 | <b>528</b><br>1478<br>2671<br>4397 | <b>351</b><br>1294<br>2671<br>4468 | <b>544</b><br>1423<br>2792<br>4762 |              |  |  | <b>4762</b> |
| <b>2010</b> | THREE MONTHS<br>SIX MONTHS<br>TWELVE MONTHS | <b>381</b><br>1276<br>2754<br>4943                                | <b>449</b><br>1374<br>2668<br>5158 | <b>567</b><br>1397<br>2820<br>5286 | <b>402</b><br>1418<br>2694<br>5276 | <b>485</b><br>1454<br>2828<br>5499 | <b>520</b><br>1407<br>2921<br>5596 | <b>498</b><br>1503<br>2979<br>5675 | <b>507</b><br>1525<br>2806<br>5647 | <b>394</b><br>1399<br>2806<br>5626 | <b>530</b><br>1431<br>2934<br>5628 | <b>460</b><br>1384<br>2909<br>5737 | <b>305</b><br>1295<br>2694<br>5498 |              |  |  | <b>5498</b> |
| <b>2011</b> | THREE MONTHS<br>SIX MONTHS<br>TWELVE MONTHS | <b>417</b><br>1182<br>2613<br>5534                                | <b>473</b><br>1195<br>2579<br>5558 | <b>482</b><br>1372<br>2667<br>5473 | <b>297</b><br>1252<br>2434<br>5368 | <b>387</b><br>1166<br>2369<br>5270 | <b>313</b><br>997<br>2283<br>5063  | <b>331</b><br>1031<br>2112<br>4896 | <b>302</b><br>946<br>1901<br>4691  | <b>271</b><br>904<br>1903<br>4568  | <b>299</b><br>872<br>1800<br>4337  | <b>284</b><br>854<br>1695<br>4161  | <b>208</b><br>791<br>1695<br>4064  |              |  |  | <b>4064</b> |
| <b>2012</b> | THREE MONTHS<br>SIX MONTHS<br>TWELVE MONTHS | <b>149</b><br>641<br>1513<br>3796                                 | <b>205</b><br>562<br>1416<br>3528  | <b>177</b><br>531<br>1322<br>3223  | <b>188</b><br>570<br>1211<br>3114  | <b>157</b><br>522<br>1084<br>2884  | <b>170</b><br>515<br>1046<br>2741  | <b>200</b><br>527<br>1169<br>2610  | <b>277</b><br>647<br>1208<br>2585  | <b>216</b><br>693<br>1223<br>2530  | <b>203</b><br>696<br>1292<br>2434  | <b>226</b><br>645<br>1208<br>2376  | <b>176</b><br>605<br>1298<br>2344  |              |  |  | <b>2344</b> |
| <b>2013</b> | THREE MONTHS<br>SIX MONTHS<br>TWELVE MONTHS | <b>70</b><br>472<br>1168<br>2265                                  | <b>117</b><br>363<br>1008<br>2177  | <b>142</b><br>329<br>934<br>2142   | <b>188</b><br>447<br>919<br>2142   | <b>125</b><br>455<br>818<br>2110   | <b>250</b><br>563<br>892<br>2190   | <b>197</b><br>572<br>1019<br>2187  | <b>126</b><br>573<br>1028<br>2036  | <b>198</b><br>521<br>1084<br>2018  | <b>217</b><br>541<br>1113<br>2032  | <b>313</b><br>728<br>1301<br>2119  | <b>133</b><br>663<br>1184<br>2076  |              |  |  | <b>2076</b> |
| <b>2014</b> | THREE MONTHS<br>SIX MONTHS<br>TWELVE MONTHS | <b>193</b><br>639<br>1180<br>2199                                 | <b>224</b><br>550<br>1278<br>2306  | <b>162</b><br>579<br>1242<br>2326  | <b>304</b><br>690<br>1329<br>2442  | <b>232</b><br>698<br>1248<br>2549  | <b>182</b><br>718<br>1297<br>2646  | <b>362</b><br>718<br>1466<br>2849  | <b>329</b><br>873<br>1571<br>2884  | <b>233</b><br>924<br>1642<br>3014  | <b>347</b><br>909<br>1685<br>2911  | <b>210</b><br>790<br>1663<br>2911  | <b>255</b><br>812<br>1736<br>3033  |              |  |  | <b>3033</b> |
| <b>2015</b> | THREE MONTHS<br>SIX MONTHS<br>TWELVE MONTHS | <b>124</b><br>589<br>1498<br>2964                                 | <b>241</b><br>620<br>1410<br>2981  | <b>296</b><br>661<br>1473<br>3115  | <b>290</b><br>827<br>1416<br>3101  | <b>255</b><br>841<br>1461<br>3124  | <b>148</b><br>693<br>1354<br>3090  | <b>407</b><br>810<br>1637<br>3135  | <b>250</b><br>805<br>1646<br>3056  | <b>401</b><br>1058<br>1751<br>3224 | <b>341</b><br>992<br>1802<br>3218  | <b>214</b><br>956<br>1761<br>3222  | <b>401</b><br>956<br>2014<br>3368  |              |  |  | <b>3368</b> |
| <b>2016</b> | THREE MONTHS<br>SIX MONTHS<br>TWELVE MONTHS | <b>148</b><br>763<br>1755<br>3392                                 | <b>485</b><br>1034<br>1990<br>3636 | <b>337</b><br>970<br>1926<br>3677  | <b>272</b><br>1094<br>1857<br>3659 | <b>304</b><br>913<br>1947<br>3708  | <b>343</b><br>919<br>2302<br>4057  | <b>561</b><br>1208<br>2224<br>4214 | <b>407</b><br>1311<br>2140<br>4066 | <b>253</b><br>1221<br>2140<br>4066 | <b>332</b><br>992<br>2200<br>4057  | <b>260</b><br>845<br>2156<br>4103  | <b>255</b><br>847<br>2068<br>3957  |              |  |  | <b>3957</b> |
| <b>2017</b> | THREE MONTHS<br>SIX MONTHS<br>TWELVE MONTHS | <b>212</b><br>727<br>1719<br>4021                                 | <b>301</b><br>768<br>1613<br>3837  | <b>319</b><br>832<br>1679<br>3819  | <b>324</b><br>944<br>1671<br>3871  | <b>402</b><br>1045<br>1813<br>3969 | <b>379</b><br>1105<br>1937<br>4005 | <b>412</b><br>1193<br>2349<br>3856 | <b>543</b><br>1334<br>2461<br>3992 | <b>401</b><br>1356<br>2461<br>4140 | <b>450</b><br>1394<br>2587<br>4258 | <b>520</b><br>1371<br>2705<br>4518 | <b>315</b><br>1285<br>2641<br>4578 |              |  |  | <b>4578</b> |
| <b>2018</b> | THREE MONTHS<br>SIX MONTHS<br>TWELVE MONTHS | <b>304</b><br>1139<br>2533<br>4670                                | <b>419</b><br>1038<br>2409<br>4788 | <b>484</b><br>1207<br>2492<br>4953 | <b>413</b><br>1316<br>2455<br>5042 | <b>448</b><br>1345<br>2383<br>5088 | <b>334</b><br>1195<br>2402<br>5046 | <b>399</b><br>1181<br>2497<br>5030 | <b>437</b><br>1170<br>2515<br>4924 | <b>299</b><br>1135<br>2330<br>4822 | <b>252</b><br>988<br>2169<br>4624  | <b>286</b><br>837<br>2007<br>4390  | <b>343</b><br>881<br>2016<br>4418  |              |  |  | <b>4418</b> |
| <b>2019</b> | THREE MONTHS<br>SIX MONTHS<br>TWELVE MONTHS | <b>284</b><br>913<br>1901<br>4398                                 | <b>363</b><br>990<br>1827<br>4342  | <b>330</b><br>1017<br>1858<br>4188 | <b>324</b><br>1009<br>1930<br>4099 | <b>355</b><br>1031<br>1999<br>4006 | <b>352</b><br>1165<br>2008<br>4024 | <b>458</b><br>1292<br>2182<br>4083 | <b>482</b><br>1381<br>2301<br>4128 | <b>441</b><br>1421<br>2412<br>4270 | <b>498</b><br>1421<br>2586<br>4516 | <b>443</b><br>1382<br>2674<br>4673 | <b>336</b><br>1277<br>2658<br>4666 |              |  |  | <b>4666</b> |
| <b>2020</b> | THREE MONTHS<br>SIX MONTHS<br>TWELVE MONTHS | <b>393</b><br>1172<br>2593<br>4775                                | <b>476</b><br>1205<br>2587<br>4888 | <b>409</b><br>1278<br>2555<br>4967 | <b>419</b><br>1304<br>2476<br>5062 | <b>410</b><br>1238<br>2443<br>5117 | <b>402</b><br>1231<br>2509<br>5167 | <b>593</b><br>1405<br>2709<br>5302 | <b>453</b><br>1448<br>2686<br>5273 | <b>614</b><br>1660<br>2891<br>5446 | <b>516</b><br>1583<br>2988<br>5464 | <b>419</b><br>1549<br>2997<br>5440 | <b>522</b><br>1457<br>3117<br>5626 |              |  |  | <b>5626</b> |
| <b>2021</b> | THREE MONTHS<br>SIX MONTHS<br>TWELVE MONTHS | <b>340</b><br>1281<br>2864<br>5573                                | <b>439</b><br>1301<br>2850<br>5536 | <b>556</b><br>1335<br>2792<br>5683 | <b>620</b><br>1615<br>2896<br>5884 | <b>460</b><br>1636<br>2937<br>5934 | <b>467</b><br>1547<br>2882<br>5999 | <b>461</b><br>1388<br>3061<br>5867 | <b>497</b><br>1425<br>2956<br>5911 | <b>451</b><br>1409<br>2733<br>5748 | <b>397</b><br>1345<br>2169<br>5629 | <b>444</b><br>1292<br>2717<br>5654 | <b>312</b><br>1153<br>2562<br>5444 |              |  |  | <b>5444</b> |
| <b>2022</b> | THREE MONTHS<br>SIX MONTHS<br>TWELVE MONTHS | <b>189</b><br>945<br>2290<br>5293                                 | <b>413</b><br>914<br>2206<br>5267  | <b>440</b><br>1042<br>2195<br>5151 | <b>245</b><br>1098<br>2043<br>4776 | <b>307</b><br>992<br>1906<br>4623  | <b>349</b><br>901<br>1943<br>4505  | <b>351</b><br>1007<br>2105<br>4395 | <b>382</b><br>1082<br>2074<br>4280 | <b>311</b><br>1044<br>1945<br>4140 | <b>398</b><br>1091<br>2098<br>4141 | <b>371</b><br>1080<br>2162<br>4068 | <b>255</b><br>1024<br>2068<br>4011 |              |  |  | <b>4011</b> |
| <b>2023</b> | THREE MONTHS<br>SIX MONTHS<br>TWELVE MONTHS | <b>201</b><br>827<br>1918<br>4023                                 | <b>326</b><br>782<br>1862<br>3936  | <b>410</b><br>937<br>1961<br>3906  | <b>254</b><br>990<br>1817<br>3915  | <b>319</b><br>983<br>1765<br>3927  | <b>283</b><br>856<br>1793<br>3861  | <b>263</b><br>865<br>1855<br>3773  | <b>332</b><br>878<br>1861<br>3723  | <b>257</b><br>852<br>1708<br>3669  | <b>365</b><br>954<br>1819<br>3636  | <b>357</b><br>979<br>1857<br>3622  | <b>279</b><br>1001<br>1853<br>3646 |              |  |  | <b>3646</b> |
| <b>2024</b> | THREE MONTHS<br>SIX MONTHS<br>TWELVE MONTHS | <b>243</b><br>879<br>1833<br>3688                                 | <b>381</b><br>903<br>1882<br>3743  | <b>389</b><br>1013<br>2014<br>3722 | <b>391</b><br>1161<br>2040<br>3859 | <b>452</b><br>1232<br>2135<br>3992 | <b>373</b><br>1216<br>2229<br>4082 | <b>406</b><br>1231<br>2392<br>4225 | <b>442</b><br>1221<br>2453<br>4335 | <b>438</b><br>1286<br>2502<br>4516 | <b>472</b><br>1352<br>2583<br>4623 | <b>424</b><br>1334<br>2555<br>4690 | <b>260</b><br>1156<br>2442<br>4671 |              |  |  | <b>4671</b> |
| <b>2025</b> | THREE MONTHS<br>SIX MONTHS<br>TWELVE MONTHS | <b>233</b><br>917<br>2269<br>4661                                 | <b>348</b><br>841<br>2175<br>4628  | <b>338</b><br>919<br>2075<br>4577  | <b>317</b><br>1003<br>1920<br>4503 | <b>353</b><br>1008<br>1849<br>4404 | <b>358</b><br>1028<br>1947<br>4389 | <b>393</b><br>1104<br>2107<br>4376 | <b>331</b><br>1082<br>2090<br>4265 | <b>356</b><br>1080<br>2108<br>4183 | <b>388</b><br>1075<br>2179<br>4099 |                                    |                                    |              |  |  | <b>3415</b> |

Note: The 2025 annual total is grey and italicised to indicate that it is provisional until the full year's monthly dwelling/unit approval statistics are available.

# Number of Lots Processed - Wyndham

## 12 Month Running Totals: December 2006 - October 2025

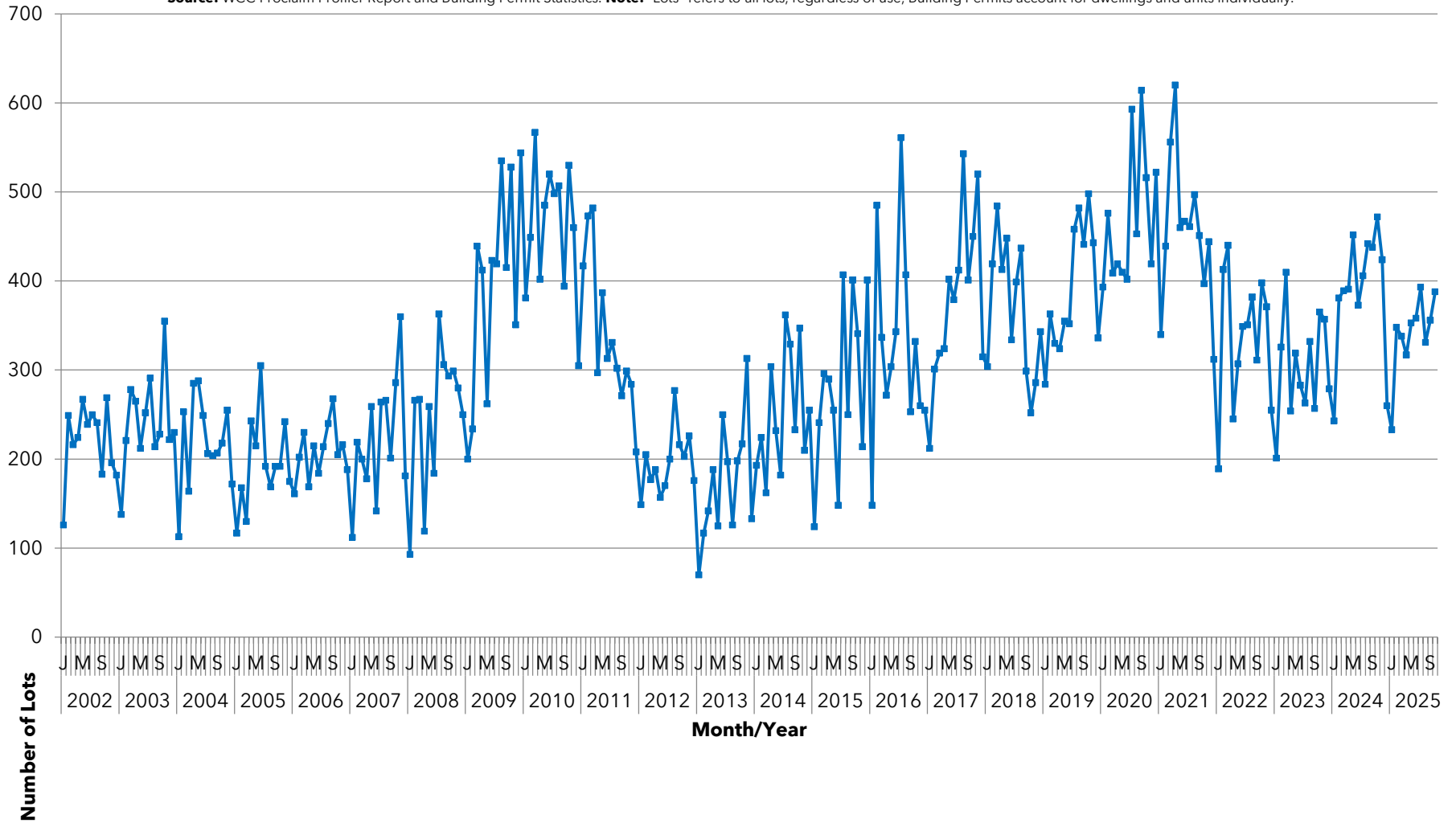
**Source:** WCC Proclaim Profiler Report and Building Permit Statistics. **Note:** "Lots" refers to all lots, regardless of use, Building Permits account for dwellings and units individually.



# Number of Approved Dwelling/Units - Wyndham

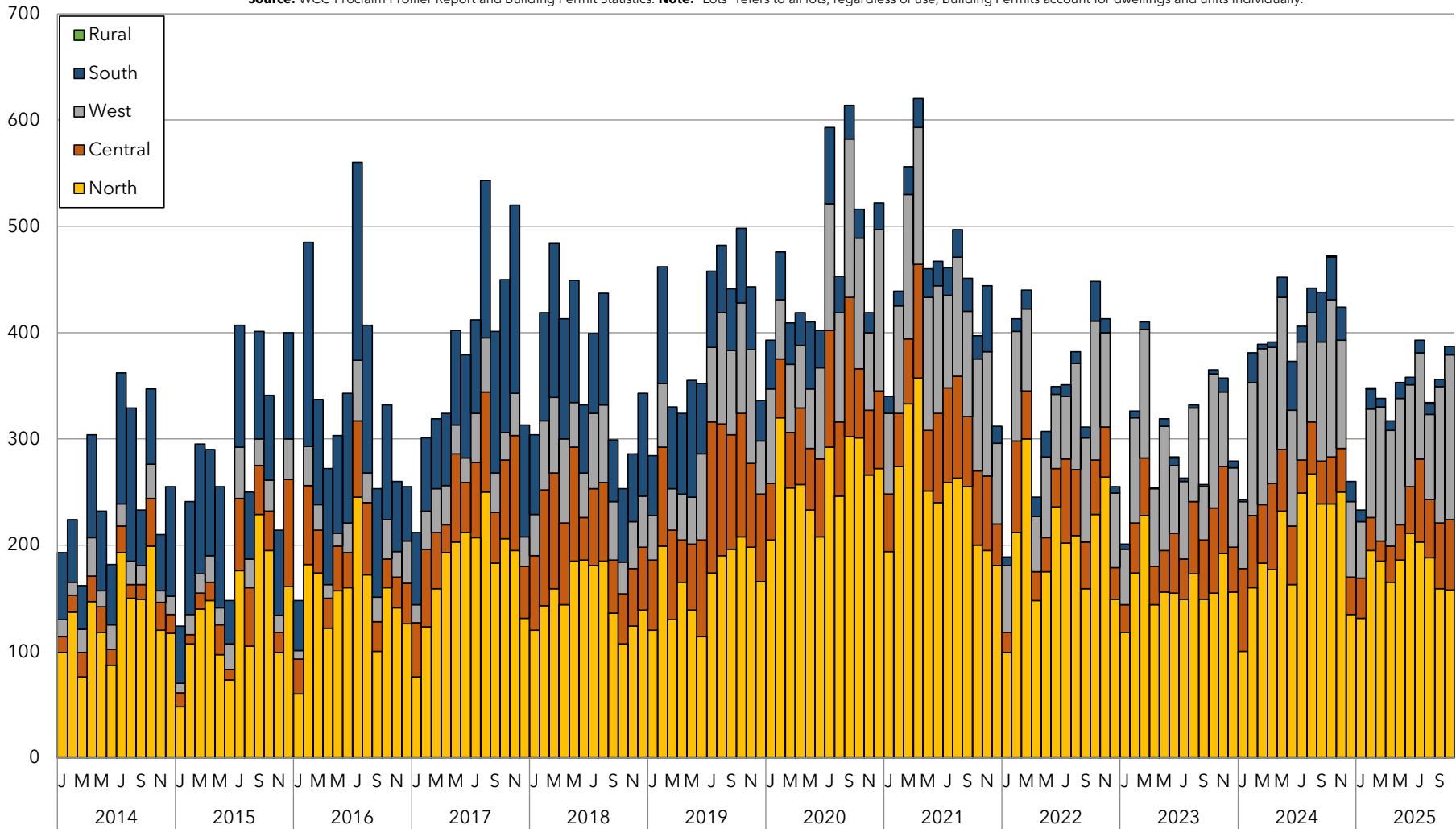
## 1 Month Running Totals: January 2002 - October 2025

**Source:** WCC Proclaim Profiler Report and Building Permit Statistics. **Note:** "Lots" refers to all lots, regardless of use, Building Permits account for dwellings and units individually.



# Number of Approved Dwelling/Units (by Dwelling Permit Area and Month) January 2014 - October 2025

**Source:** WCC Proclaim Profiler Report and Building Permit Statistics. **Note:** "Lots" refers to all lots, regardless of use, Building Permits account for dwellings and units individually.



Note: Dwelling permit areas contain the following suburbs:  
 North = Laverton, Mount Cottrell, Tarneit, Truganina & Williams Landing      West = Wyndham Vale, Mambourin & Manor Lakes  
 Central = Hoppers Crossing & Werribee      South = Point Cook & Werribee South      Rural = Little River

**Source:** WCC Proclaim Profiler Report and Building Permit Statistics.

**Note:** "Lots" refers to all lots, regardless of use, Building Permits account for dwellings and units individually.