

Dwelling/Unit Numbers - November 2025

Dwellings and units

Building permits for 254 dwellings and 15 units in Wyndham were issued in November 2025, as shown in the attached table and graphs.

The units are in:

- Tarneit (13)
- Werribee (2)

Key observations

- The monthly number of dwellings/units was 269
- The 3-month cumulative figure was 1,013
- The 6-month cumulative figure was 2,095
- The 12-month cumulative figure was 3,944

Comments

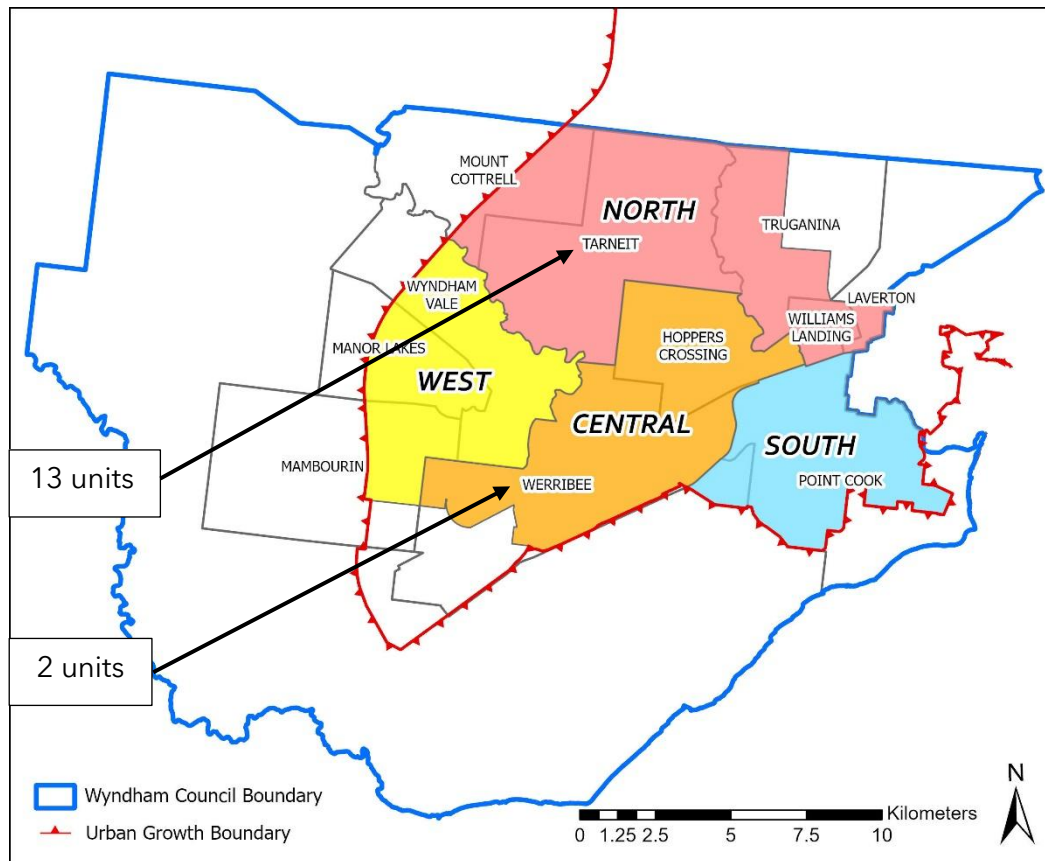
The November 2025 distribution of dwellings/units between Wyndham's suburbs is summarised in the table below:

Region	Total percentage	Suburb	Percentage
North	54%	Laverton	0%
		Mount Cottrell	4%
		Tarneit	48%
		Truganina	2%
		Williams Landing	0%
Central	18%	Hoppers Crossing	1%
		Werribee	17%
West	25%	Manor Lakes	7%
		Mambourin	10%
		Wyndham Vale	8%
South	3%	Point Cook	3%

The three suburbs with the highest number of dwellings/units in November 2025 are:

1. Tarneit (129)
2. Werribee (47)
3. Mambourin (26)

The North region of Wyndham (Tarneit, Truganina, Williams Landing, Laverton and Mount Cottrell) had the highest number of dwellings/units in November 2025 (146).

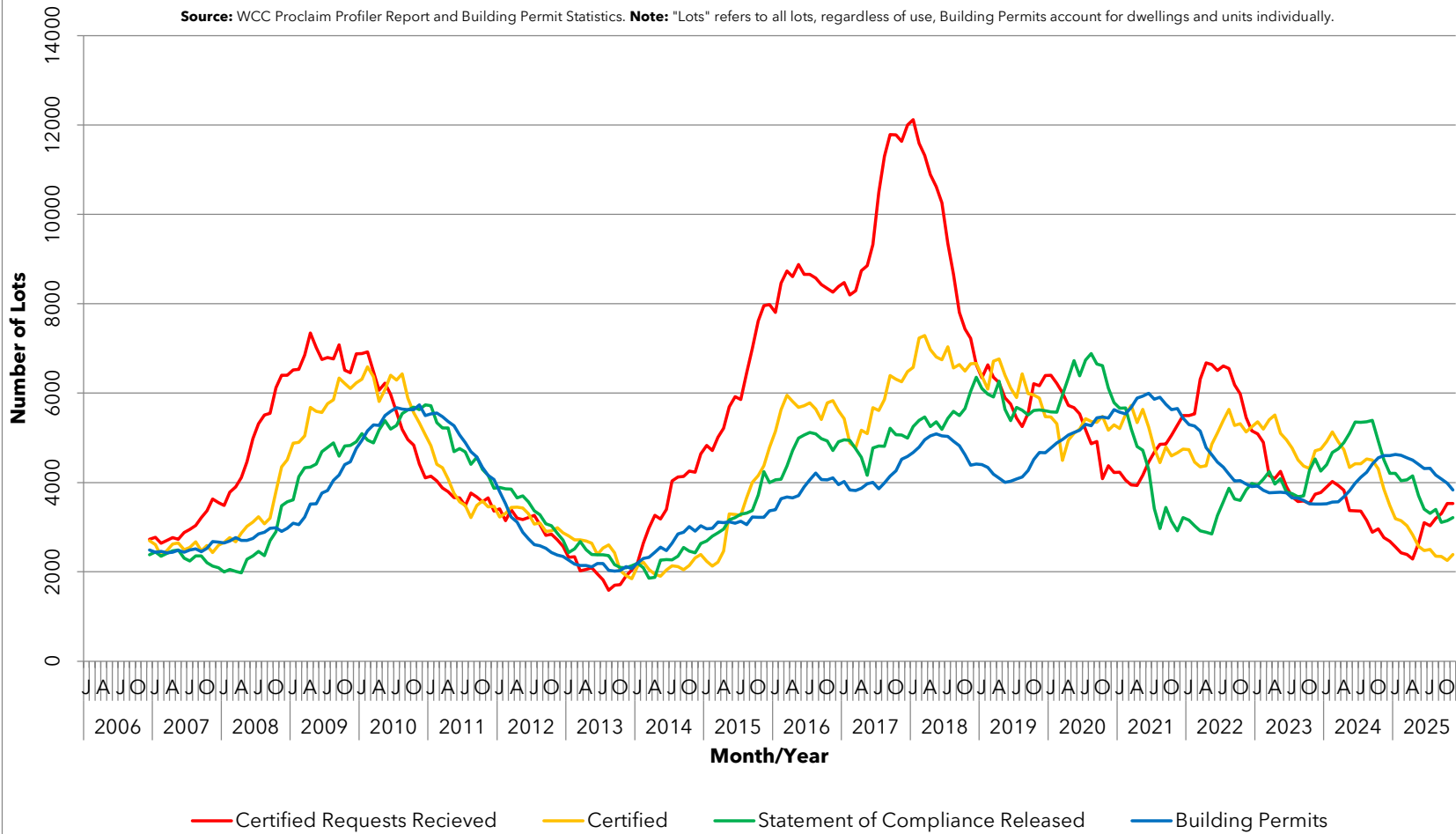


Queries may be directed to Council’s Strategic Planning Unit. This bulletin relies on data from Council’s Building Services Department, WCC Proclaim Profiler Reports and analysis by Building Services and the Strategic Planning Unit.

YEAR	3, 6 and 12 MONTH RUNNING TOTALS	NUMBER OF DWELLINGS/UNITS APPROVED BY BUILDING PERMITS (By Month)												YEARLY TOTAL		
		J	F	M	A	M	J	J	A	S	O	N	D			
2001																2031
2002		126	249	216	224	267	239	250	241	183	269	196	182			2642
	THREE MONTHS	616	645	591	689	707	730	756	730	674	693	648	647			
	SIX MONTHS	1297	1248	1304	1305	1352	1321	1445	1437	1404	1449	1378	1321			
	TWELVE MONTHS	2061	2194	2291	2396	2516	2635	2742	2685	2708	2754	2730	2642			
2003		138	221	278	265	212	252	291	214	228	355	222	230			2906
	THREE MONTHS	516	541	637	764	755	729	755	757	733	797	805	807			
	SIX MONTHS	1209	1189	1284	1280	1296	1366	1519	1512	1462	1552	1562	1540			
	TWELVE MONTHS	2654	2626	2688	2729	2674	2687	2728	2701	2746	2832	2858	2906			
2004		113	253	164	285	288	249	206	204	207	218	255	172			2614
	THREE MONTHS	565	596	530	702	737	822	743	659	617	629	680	645			
	SIX MONTHS	1362	1401	1337	1267	1333	1352	1445	1396	1439	1372	1339	1262			
	TWELVE MONTHS	2881	2913	2799	2819	2895	2892	2807	2797	2776	2639	2672	2614			
2005		117	168	130	243	215	305	192	169	192	192	242	175			2340
	THREE MONTHS	544	457	415	541	588	763	712	666	553	553	626	609			
	SIX MONTHS	1173	1137	1060	1085	1045	1178	1253	1254	1316	1265	1292	1162			
	TWELVE MONTHS	2618	2533	2499	2457	2384	2440	2426	2391	2376	2350	2337	2340			
2006		161	202	230	169	215	184	214	240	268	205	216	188			2492
	THREE MONTHS	578	538	593	601	614	568	613	638	722	713	689	609			
	SIX MONTHS	1131	1164	1202	1179	1152	1161	1214	1252	1290	1326	1327	1331			
	TWELVE MONTHS	2384	2418	2518	2444	2444	2323	2345	2416	2492	2505	2479	2492			
2007		112	219	200	178	259	142	264	266	201	286	360	181			2668
	THREE MONTHS	516	519	531	597	637	579	665	672	731	753	847	827			
	SIX MONTHS	1229	1208	1140	1113	1156	1110	1262	1309	1310	1418	1519	1558			
	TWELVE MONTHS	2443	2460	2430	2439	2483	2441	2491	2517	2450	2531	2675	2668			
2008		93	266	267	119	259	184	363	306	293	299	280	250			2979
	THREE MONTHS	634	540	626	652	645	562	806	853	962	898	872	829			
	SIX MONTHS	1387	1387	1453	1286	1185	1188	1458	1498	1524	1704	1725	1791			
	TWELVE MONTHS	2649	2696	2763	2704	2704	2746	2845	2885	2977	2990	2910	2979			
2009		200	234	439	412	262	423	419	535	415	528	351	544			4762
	THREE MONTHS	730	684	873	1085	1113	1097	1104	1377	1369	1478	1294	1423			
	SIX MONTHS	1628	1556	1702	1815	1797	1970	2189	2490	2466	2582	2671	2792			
	TWELVE MONTHS	3086	3054	3226	3519	3522	3761	3817	4046	4168	4397	4468	4762			
2010		381	449	567	402	485	520	498	507	394	530	460	305			5498
	THREE MONTHS	1276	1374	1397	1418	1454	1407	1503	1525	1399	1431	1384	1295			
	SIX MONTHS	2754	2668	2820	2694	2828	2804	2921	2979	2806	2934	2909	2694			
	TWELVE MONTHS	4943	5158	5286	5276	5499	5596	5675	5647	5626	5628	5737	5498			
2011		417	473	482	297	387	313	331	302	271	299	284	208			4064
	THREE MONTHS	1182	1195	1372	1252	1166	997	1031	946	904	872	854	791			
	SIX MONTHS	2613	2579	2667	2434	2361	2369	2283	2112	1901	1903	1800	1695			
	TWELVE MONTHS	5534	5558	5473	5368	5270	5063	4896	4691	4568	4337	4161	4064			
2012		149	205	177	188	157	170	200	277	216	203	226	176			2344
	THREE MONTHS	641	562	531	570	522	515	527	647	693	696	645	605			
	SIX MONTHS	1513	1416	1322	1211	1084	1046	1097	1169	1208	1223	1292	1298			
	TWELVE MONTHS	3796	3528	3223	3114	2884	2741	2610	2585	2530	2434	2376	2344			
2013		70	117	142	188	125	250	197	126	198	217	313	133			2076
	THREE MONTHS	472	363	329	447	455	563	572	573	521	541	728	663			
	SIX MONTHS	1168	1008	934	919	818	892	1019	1028	1084	1113	1301	1184			
	TWELVE MONTHS	2265	2177	2142	2142	2110	2190	2187	2036	2018	2032	2119	2076			
2014		193	224	162	304	232	182	362	329	233	347	210	255			3033
	THREE MONTHS	639	550	579	690	698	718	776	873	924	909	790	812			
	SIX MONTHS	1180	1278	1242	1329	1248	1297	1466	1571	1642	1685	1663	1736			
	TWELVE MONTHS	2199	2306	2326	2442	2549	2481	2646	2849	2884	3014	2911	3033			
2015		124	241	296	290	255	148	407	250	401	341	214	401			3368
	THREE MONTHS	589	620	661	827	841	693	810	805	1058	992	956	956			
	SIX MONTHS	1498	1410	1473	1416	1461	1354	1637	1646	1751	1802	1761	2014			
	TWELVE MONTHS	2964	2981	3115	3101	3124	3090	3135	3056	3224	3218	3222	3368			
2016		148	485	337	272	304	343	561	407	253	332	260	255			3957
	THREE MONTHS	763	1034	970	1094	913	919	1208	1311	1221	992	845	847			
	SIX MONTHS	1755	1990	1926	1857	1947	1889	2302	2224	2140	2200	2156	2068			
	TWELVE MONTHS	3392	3636	3677	3659	3708	3903	4057	4214	4066	4057	4103	3957			
2017		212	301	319	324	402	379	412	543	401	450	520	315			4578
	THREE MONTHS	727	768	832	944	1045	1105	1193	1334	1356	1394	1371	1285			
	SIX MONTHS	1719	1613	1679	1671	1813	1937	2349	2379	2461	2587	2705	2641			
	TWELVE MONTHS	4021	3837	3819	3871	3969	4005	3856	3992	4140	4258	4518	4578			
2018		304	419	484	413	448	334	399	437	299	252	286	343			4418
	THREE MONTHS	1139	1038	1207	1316	1345	1195	1181	1170	1135	988	837	881			
	SIX MONTHS	2533	2409	2492	2455	2383	2402	2497	2515	2330	2169	2007	2016			
	TWELVE MONTHS	4670	4788	4953	5042	5088	5046	5030	4924	4822	4624	4390	4418			
2019		284	363	330	324	355	352	458	482	441	498	443	336			4666
	THREE MONTHS	913	990	977	1017	1009	1031	1165	1292	1381	1421	1382	1277			
	SIX MONTHS	1901	1827	1858	1930	1999	2008	2182	2301	2412	2586	2674	2658			
	TWELVE MONTHS	4398	4342	4188	4099	4006	4024	4083	4128	4270	4516	4673	4666			
2020		393	476	409	419	410	402	593	453	614	516	419	522			5626
	THREE MONTHS	1172	1205	1278	1304	1238	1231	1405	1448	1660	1583	1549	1457			
	SIX MONTHS	2593	2587	2555	2476	2443	2509	2709	2686	2891	2988	2997	3117			
	TWELVE MONTHS	4775	4888	4967	5062	5117	5167	5302	5273	5446	5464	5440	5626			
2021		340	439	556	620	460	467	461	497	451	397	444	312			5444
	THREE MONTHS	1281	1301	1335	1615	1636	1547	1388	1425	1409	1345	1292	1153			
	SIX MONTHS	2864	2850	2792	2896											

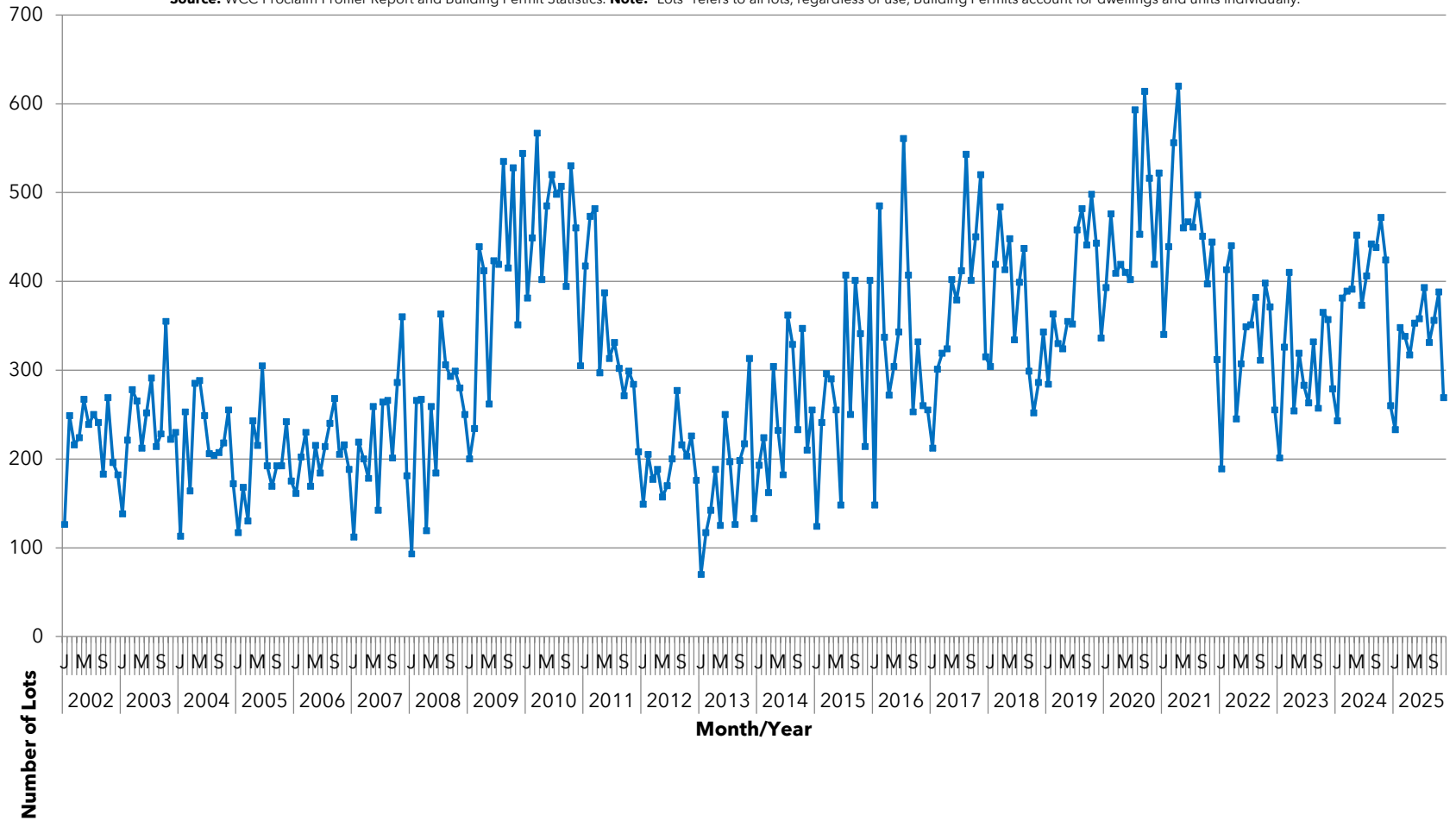
Number of Lots Processed - Wyndham 12 Month Running Totals: December 2006 - November 2025

Source: WCC Proclaim Profiler Report and Building Permit Statistics. **Note:** "Lots" refers to all lots, regardless of use, Building Permits account for dwellings and units individually.



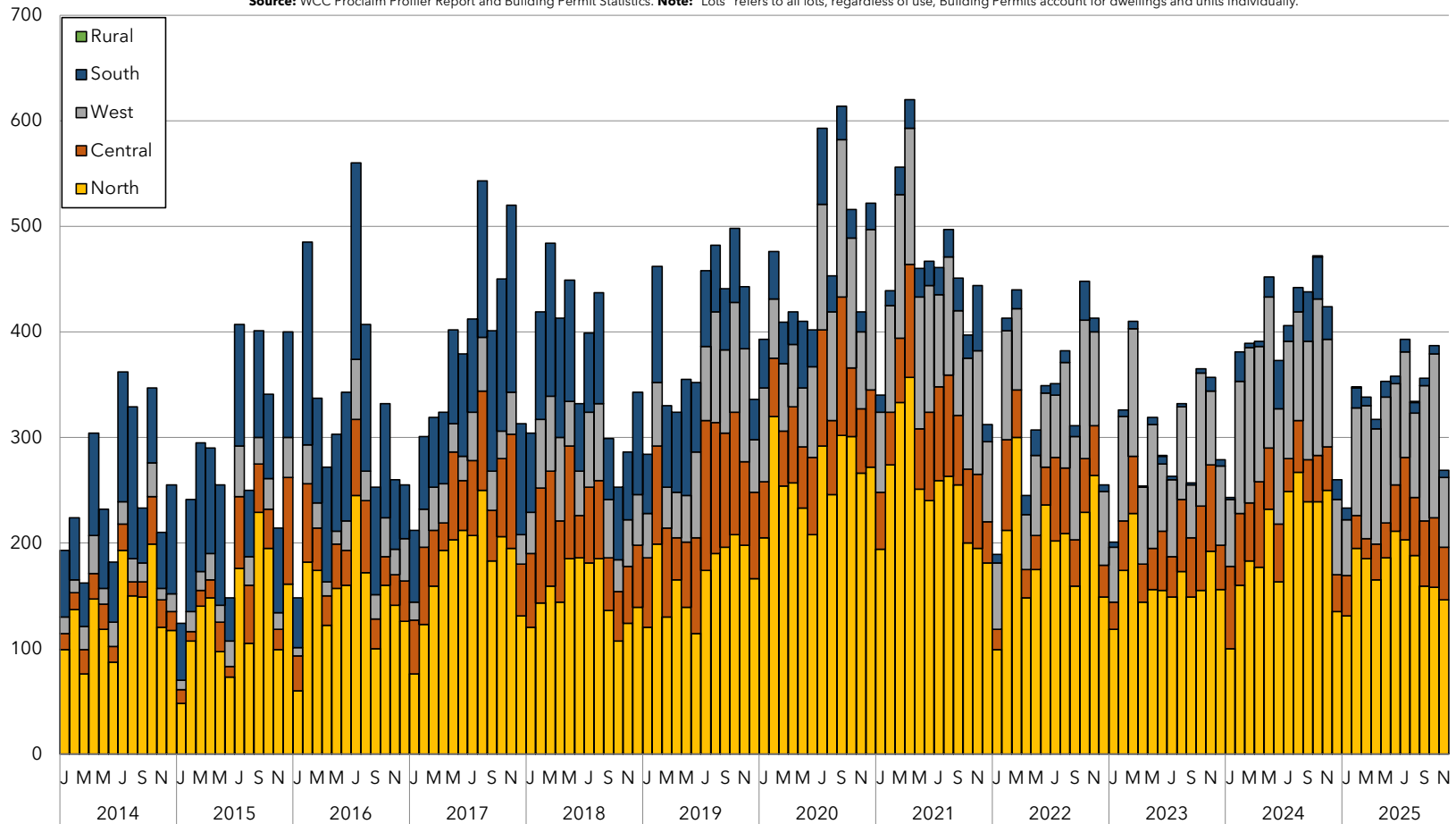
Number of Approved Dwelling/Units - Wyndham 1 Month Running Totals: January 2002 - November 2025

Source: WCC Proclaim Profiler Report and Building Permit Statistics. Note: "Lots" refers to all lots, regardless of use, Building Permits account for dwellings and units individually.



Number of Approved Dwelling/Units (by Dwelling Permit Area and Month) January 2014 - November 2025

Source: WCC Proclaim Profiler Report and Building Permit Statistics. **Note:** "Lots" refers to all lots, regardless of use, Building Permits account for dwellings and units individually.



Note: Dwelling permit areas contain the following suburbs:
 North = Laverton, Mount Cottrell, Tarneit, Truganina & Williams Landing West = Wyndham Vale, Mambourin & Manor Lakes
 Central = Hoppers Crossing & Werribee South = Point Cook & Werribee South Rural = Little River

Source: WCC Proclaim Profiler Report and Building Permit Statistics.

Note: "Lots" refers to all lots, regardless of use, Building Permits account for dwellings and units individually.