

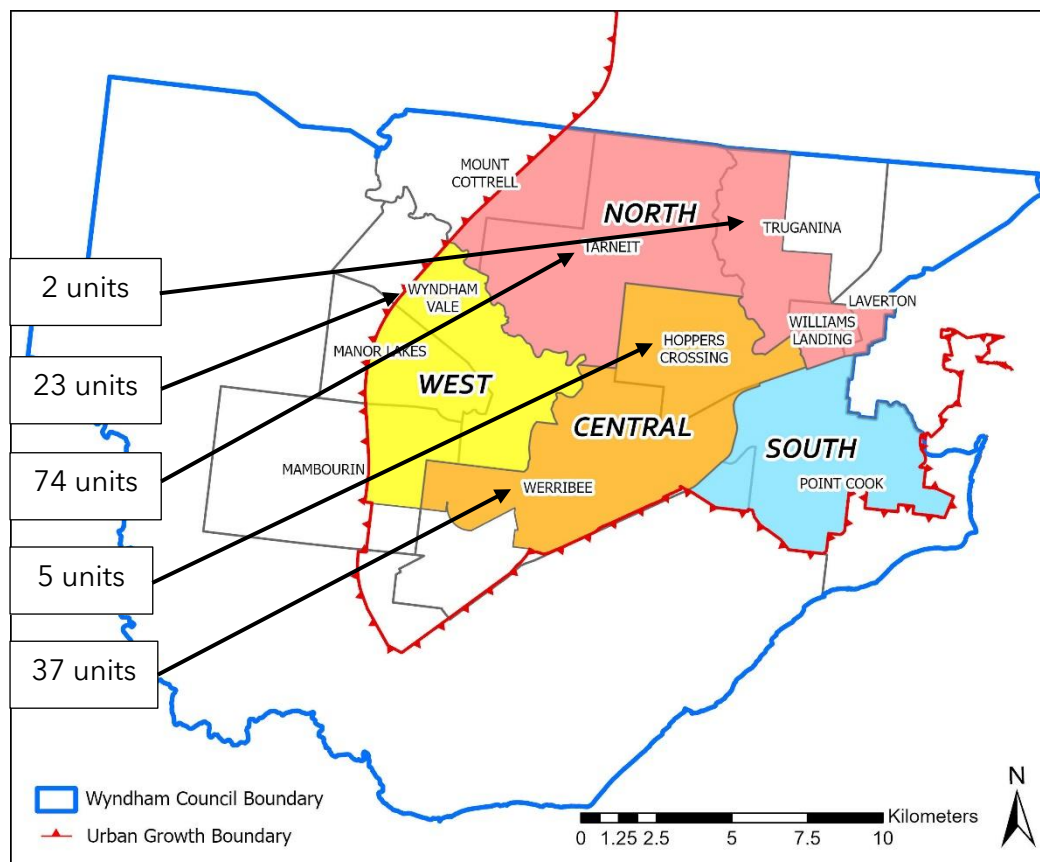
## **Dwelling/Unit Numbers - 2025 - January-December 2025**

### Dwellings and units

Building permits for 3,773 dwellings and 141 units in Wyndham were issued in 2025, as shown in the attached table and graphs.

The units are in:

- Tarneit (74)
- Werribee (37)
- Wyndham Vale (23)
- Hoppers Crossing (5)
- Truganina (2)



## Comments

The 2025 distribution of dwellings/units between Wyndham's suburbs is summarised in the table below:

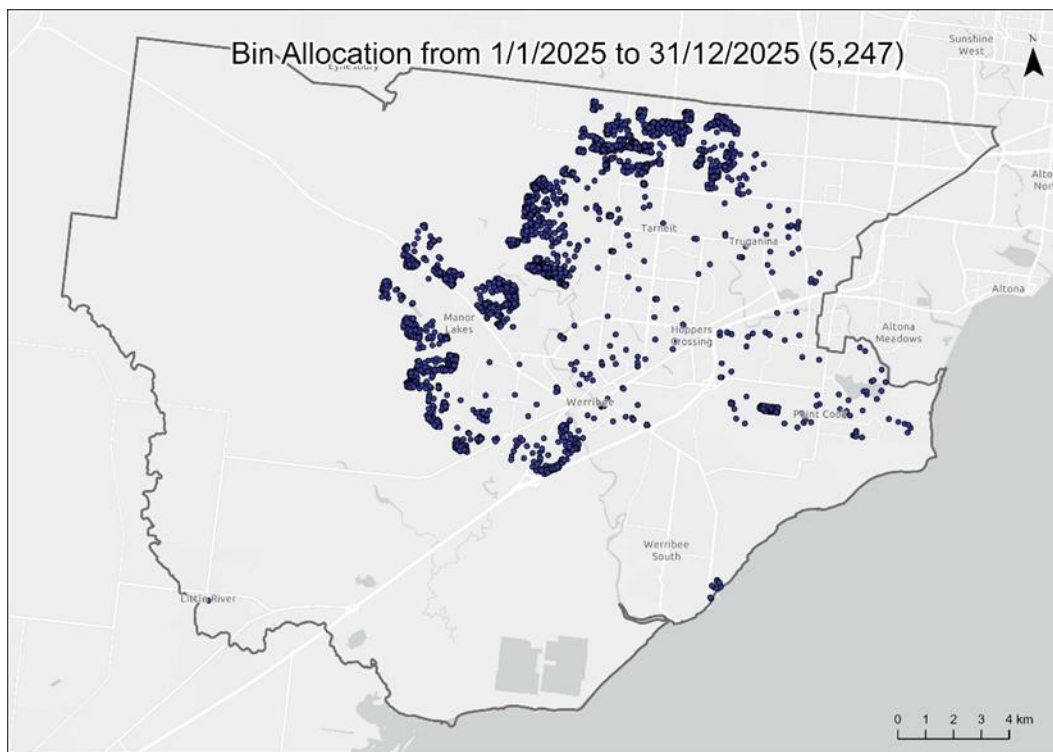
<b>Region</b>	<b>Total percentage</b>	<b>Suburb</b>	<b>Percentage</b>
<b>North</b>	52%	<b>Laverton</b>	0%
		<b>Mount Cottrell</b>	2%
		<b>Tarneit</b>	45%
		<b>Truganina</b>	5%
		<b>Williams Landing</b>	0%
<b>Central</b>	14%	<b>Hoppers Crossing</b>	1%
		<b>Werribee</b>	13%
<b>West</b>	31%	<b>Manor Lakes</b>	8%
		<b>Mambourin</b>	9%
		<b>Wyndham Vale</b>	14%
<b>South</b>	3%	<b>Point Cook</b>	3%

The three suburbs with the highest number of dwellings/units in 2025 are:

1. Tarneit (1,753)
2. Wyndham Vale (546)
3. Werribee (527)

The North region of Wyndham (Tarneit, Truganina, Williams Landing, Laverton and Mount Cottrell) had the highest number of dwellings/units in 2025 (2,032).

The bin map below shows where new bins have been issued from 1 January to 31 December 2025 across Wyndham. Bin allocation requests do not match the number of dwelling permits issued for the 2025 calendar year as there are construction delivery timeframe considerations, however this map provides a helpful representation of the distribution of new dwellings across the municipality. For reference, the average timeframe for the construction of a dwelling is approximately 6 months from dwelling permit to certificate of occupancy (based on data from January-April 2025), however actual construction times vary and can extend to 12 months or longer due to other factors. The total number of dwelling permits approved in 2024 was 4,671 compared to 3,914 in 2025.

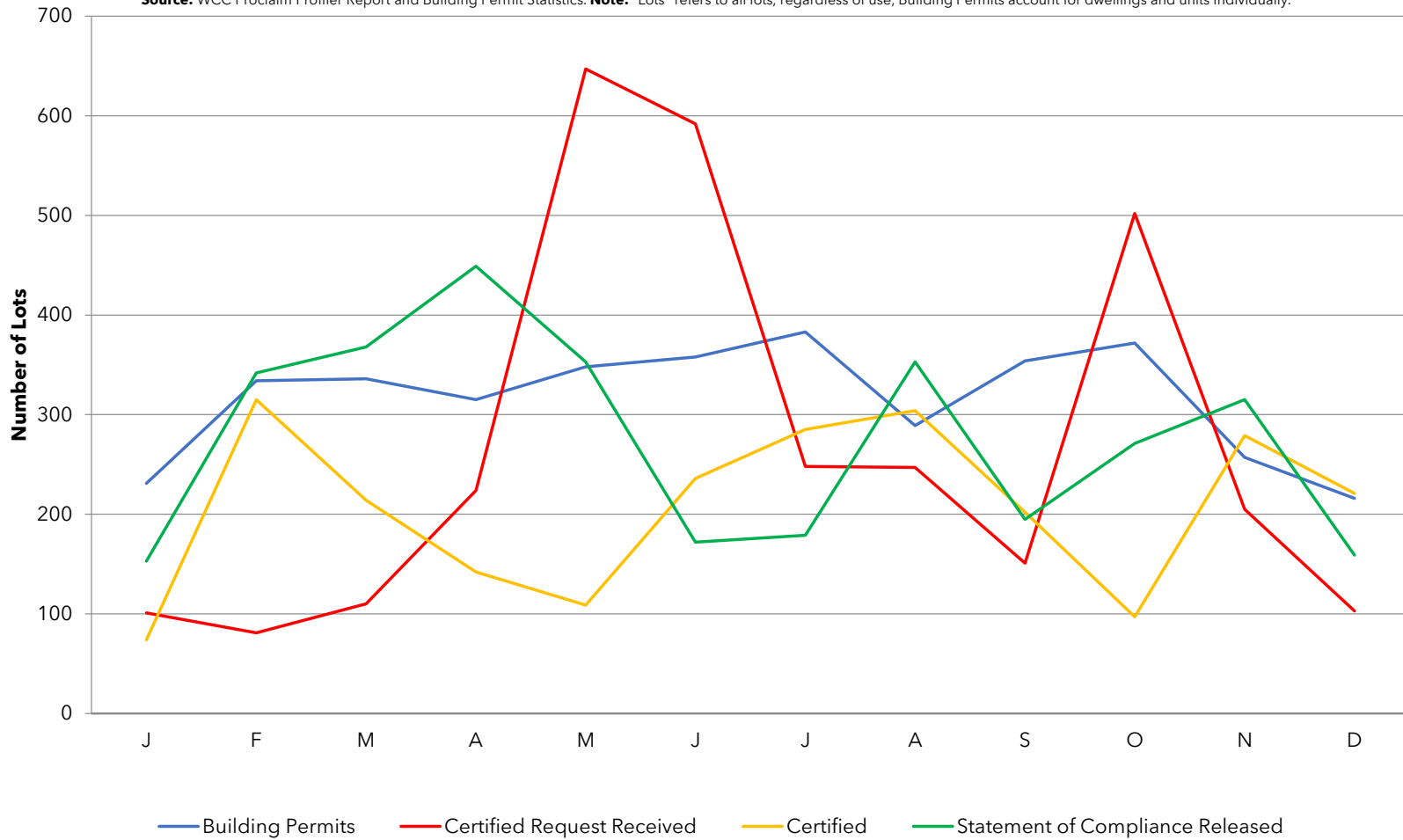


**Queries may be directed to Council’s Strategic Planning Unit. This bulletin relies on data from Council’s Building Services Department, WCC Proclaim Profiler Reports and analysis by Building Services and the Strategic Planning Unit.**

YEAR	3, 6 and 12 MONTH RUNNING TOTALS	NUMBER OF DWELLINGS/UNITS APPROVED BY BUILDING PERMITS (By Month)												YEARLY TOTAL			
		J	F	M	A	M	J	J	A	S	O	N	D				
2001																	2031
2002	THREE MONTHS SIX MONTHS TWELVE MONTHS	126 616 2061	249 645 2194	216 591 2291	224 689 2396	267 707 2516	239 730 2635	250 756 2742	241 730 2685	183 674 2708	269 693 2754	196 648 2730	182 647 2642	2642			
2003	THREE MONTHS SIX MONTHS TWELVE MONTHS	138 516 2654	221 541 2626	278 637 2688	265 764 2729	212 755 2674	252 729 2687	291 755 2728	214 733 2701	228 797 2746	355 805 2832	222 807 2858	230 807 2906	2906			
2004	THREE MONTHS SIX MONTHS TWELVE MONTHS	113 565 2881	253 596 2913	164 530 2799	285 702 2819	288 737 2895	249 822 2892	206 743 2807	204 659 2797	207 617 2776	218 629 2639	255 680 2672	172 645 2614	2614			
2005	THREE MONTHS SIX MONTHS TWELVE MONTHS	117 544 2618	168 457 2533	130 415 2499	243 541 2457	215 588 2384	305 763 2440	192 712 2426	169 666 2391	192 553 2376	192 553 2350	242 626 2337	175 609 2340	2340			
2006	THREE MONTHS SIX MONTHS TWELVE MONTHS	161 578 2384	202 538 2418	230 593 2518	169 601 2444	215 614 2444	184 568 2323	214 613 2345	240 638 2416	268 722 2492	205 713 2505	216 689 2479	188 609 2492	2492			
2007	THREE MONTHS SIX MONTHS TWELVE MONTHS	112 516 2443	219 519 2460	200 531 2430	178 597 2439	259 637 2483	142 579 2441	264 665 2491	266 672 2517	201 731 2450	286 753 2531	360 847 2675	181 827 2668	2668			
2008	THREE MONTHS SIX MONTHS TWELVE MONTHS	93 634 2649	266 540 2696	267 626 2763	119 652 2704	259 645 2704	184 562 2746	363 806 2845	306 853 2885	293 962 2977	299 898 2990	280 872 2910	250 829 2979	2979			
2009	THREE MONTHS SIX MONTHS TWELVE MONTHS	200 730 1628 3086	234 684 1556 3054	439 873 1702 3226	412 1085 1815 3519	262 1113 1797 3522	423 1097 1970 3761	419 1104 2189 3817	535 1377 2490 4046	415 1369 2466 4168	528 1478 2582 4397	351 1294 2671 4468	544 1423 2792 4762	4762			
2010	THREE MONTHS SIX MONTHS TWELVE MONTHS	381 1276 2754 4943	449 1374 2668 5158	567 1397 2820 5286	402 1418 2694 5276	485 1454 2828 5499	520 1407 2804 5596	498 1503 2921 5675	507 1525 2979 5647	394 1399 2806 5626	530 1431 2934 5628	460 1384 2909 5737	305 1295 2694 5498	5498			
2011	THREE MONTHS SIX MONTHS TWELVE MONTHS	417 1182 2613 5534	473 1195 2579 5558	482 1372 2667 5473	297 1252 2434 5368	387 1166 2361 5270	313 1097 2369 5063	331 1031 2283 4896	302 946 2112 4691	271 904 1901 4568	299 872 1903 4337	284 854 1800 4161	208 791 1695 4064	4064			
2012	THREE MONTHS SIX MONTHS TWELVE MONTHS	149 641 1513 3796	205 562 1416 3528	177 531 1322 3223	188 570 1211 3114	157 522 1084 2884	170 515 1046 2741	200 527 1097 2610	277 647 1169 2585	216 693 1208 2530	203 696 1223 2434	226 645 1292 2376	176 605 1298 2344	2344			
2013	THREE MONTHS SIX MONTHS TWELVE MONTHS	70 472 1168 2265	117 363 1008 2177	142 329 934 2142	188 447 919 2142	125 455 818 2110	250 563 892 2190	197 572 1019 2187	126 573 1028 2036	198 521 1084 2018	217 541 1113 2032	313 728 1301 2119	133 663 1184 2076	2076			
2014	THREE MONTHS SIX MONTHS TWELVE MONTHS	193 639 1180 2199	224 550 1278 2306	162 579 1242 2326	304 690 1329 2442	232 698 1248 2549	182 718 1297 2481	362 776 1466 2646	329 873 1571 2849	233 924 1642 2884	347 909 1685 3014	210 790 1663 2911	255 812 1736 3033	3033			
2015	THREE MONTHS SIX MONTHS TWELVE MONTHS	124 589 1498 2964	241 620 1410 2981	296 661 1473 3115	290 827 1416 3101	255 841 1461 3124	148 693 1354 3090	407 810 1637 3135	250 805 1646 3056	401 1058 1751 3224	341 992 1802 3218	214 956 1761 3222	401 956 2014 3368	3368			
2016	THREE MONTHS SIX MONTHS TWELVE MONTHS	148 763 1755 3392	485 1034 1990 3636	337 970 1926 3677	272 1094 1857 3659	304 913 1947 3708	343 919 1889 3903	561 1208 2302 4057	407 1311 2224 4214	253 1221 2140 4066	332 992 2200 4057	260 845 2156 4103	255 847 2068 3957	3957			
2017	THREE MONTHS SIX MONTHS TWELVE MONTHS	212 727 1719 4021	301 768 1613 3837	319 832 1679 3819	324 944 1671 3871	402 1045 1813 3969	379 1105 1937 4005	412 1193 2349 3856	543 1334 2379 3992	401 1356 2461 4140	450 1394 2587 4258	520 1371 2705 4518	315 1285 2641 4578	4578			
2018	THREE MONTHS SIX MONTHS TWELVE MONTHS	304 1139 2533 4670	419 1038 2409 4788	484 1207 2492 4953	413 1316 2455 5042	448 1345 2383 5088	334 1195 2402 5046	399 1181 2497 5030	437 1170 2515 4924	299 1135 2330 4822	252 988 2169 4624	286 837 2007 4624	343 881 2016 4390	4418			
2019	THREE MONTHS SIX MONTHS TWELVE MONTHS	284 913 1901 4398	363 990 1827 4342	330 977 1858 4188	324 1017 1930 4099	355 1009 1999 4006	352 1031 2008 4024	458 1165 2182 4083	482 1292 2301 4128	441 1381 2412 4270	498 1421 2586 4516	443 1382 2674 4673	336 1277 2658 4666	4666			
2020	THREE MONTHS SIX MONTHS TWELVE MONTHS	393 1172 2593 4775	476 1205 2587 4888	409 1278 2555 4967	419 1304 2476 5062	410 1238 2443 5117	402 1231 2509 5167	593 1405 2709 5302	453 1448 2686 5273	614 1660 2891 5446	516 1583 2988 5464	419 1549 2997 5440	522 1457 3117 5626	5626			
2021	THREE MONTHS SIX MONTHS TWELVE MONTHS	340 1281 2864 5573	439 1301 2850 5536	556 1335 2792 5683	620 1615 2896 5884	460 1636 2937 5934	467 1547 2882 5999	461 1388 3003 5867	497 1425 3061 5911	451 1409 2956 5748	397 1345 2733 5629	444 1292 2717 5654	312 1153 2562 5444	5444			
2022	THREE MONTHS SIX MONTHS TWELVE MONTHS	189 945 2290 5293	413 914 2206 5267	440 1042 2195 5151	245 1098 2043 4776	307 992 1906 4623	349 901 1943 4505	351 1007 2105 4395	382 1082 2074 4280	311 1044 1945 4140	398 1091 2098 4141	371 1080 2162 4068	255 1024 2068 4011	4011			
2023	THREE MONTHS SIX MONTHS TWELVE MONTHS	201 827 1918 4023	326 782 1862 3936	410 937 1961 3906	254 990 1817 3915	319 983 1765 3927	283 856 1793 3861	263 865 1855 3773	332 878 1861 3723	257 852 1708 3669	365 954 1819 3636	357 979 1857 3622	279 1001 1853 3646	3646			
2024	THREE MONTHS SIX MONTHS TWELVE MONTHS	243 879 1833 3688	381 903 1882 3743	389 1013 2014 3722	391 1161 2040 3859	452 1232 2135 3992	373 1216 2229 4082	406 1231 2392 4225	442 1221 2453 4335	438 1286 2502 4516	472 1352 2583 4623	424 1334 2555 4690	260 1156 2442 4671	4671			
2025	THREE MONTHS SIX MONTHS TWELVE MONTHS	233 917 2269 4661	348 841 2175 4628	338 919 2075 4577	317 1003 1920 4503	353 1008 1849 4404	358 1028 1947 4389	393 1104 2107 4376	331 1082 2090 4265	356 1080 2108 4183	388 1075 2179 4099	269 1013 2095 3944	230 887 1967 3914	3914			

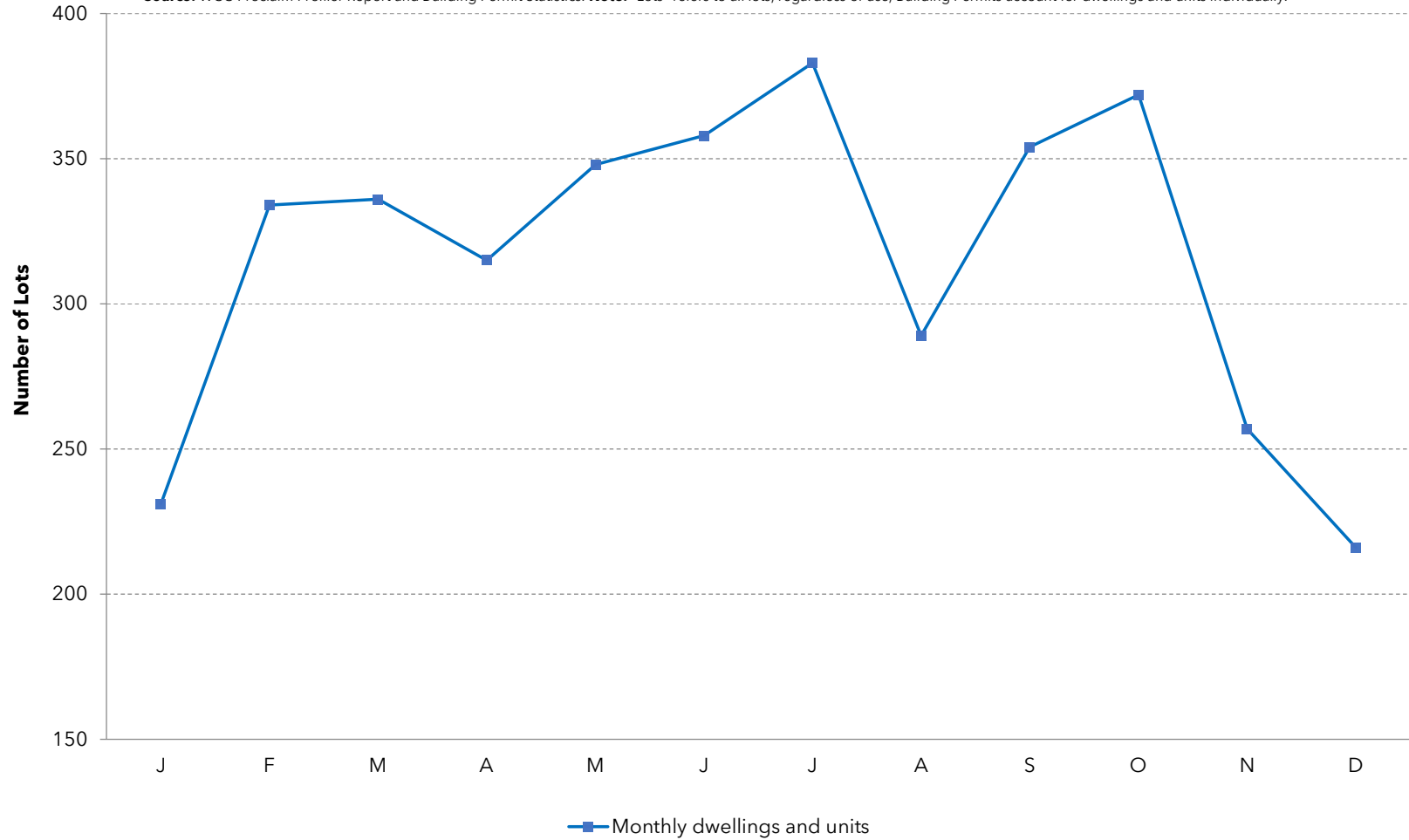
## Wyndham - Number of Lots Processed January-December 2025

**Source:** WCC Proclaim Profiler Report and Building Permit Statistics. **Note:** "Lots" refers to all lots, regardless of use, Building Permits account for dwellings and units individually.



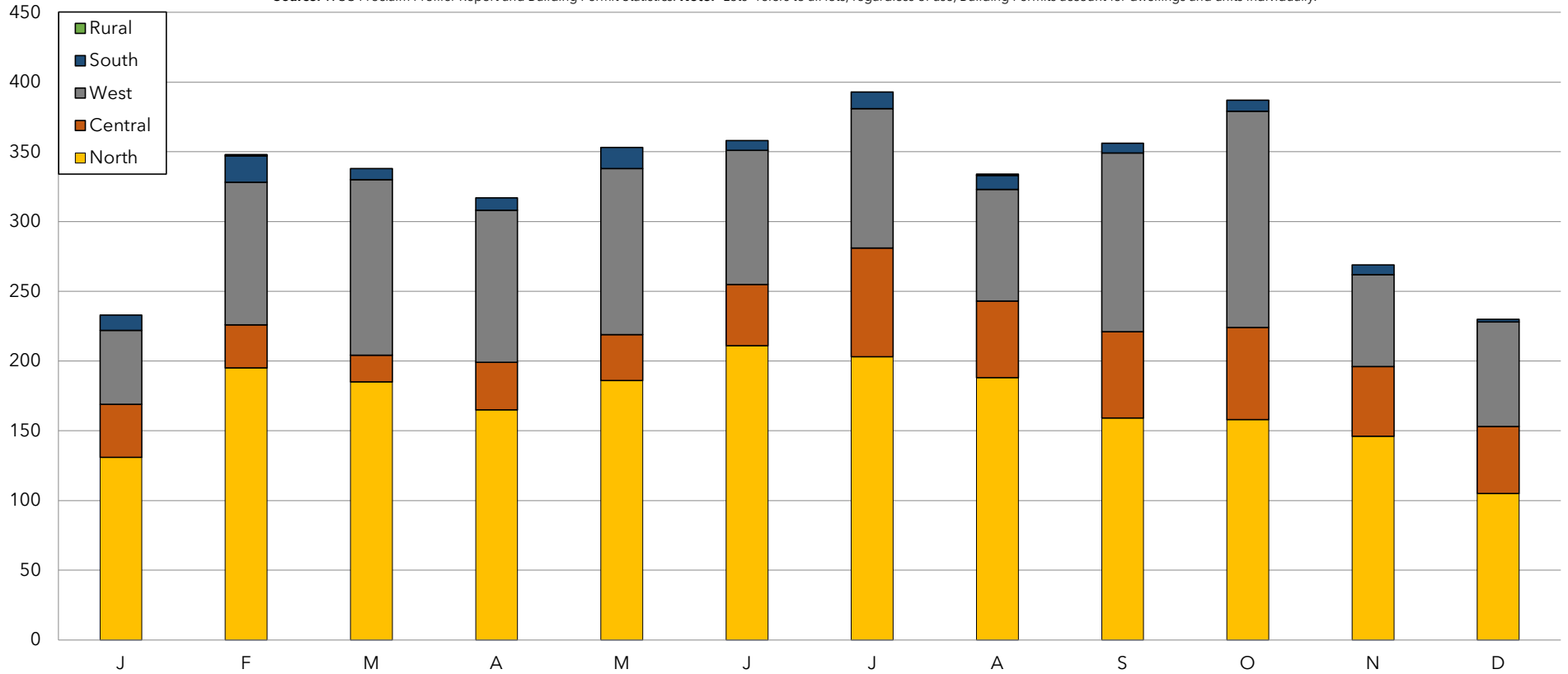
## Wyndham - Number of Approved Dwelling/Units January-December 2025

Source: WCC Proclaim Profiler Report and Building Permit Statistics. Note: "Lots" refers to all lots, regardless of use, Building Permits account for dwellings and units individually.



# Wyndham - Number of Approved Dwelling/Units (by Dwelling Permit Area) January-December 2025

Source: WCC Proclaim Profiler Report and Building Permit Statistics. Note: "Lots" refers to all lots, regardless of use, Building Permits account for dwellings and units individually.



Note: Dwelling permit areas contain the following suburbs:  
 North = Laverton, Mount Cottrell, Tarneit, Truganina & Williams Landing      West = Wyndham Vale, Mambourin & Manor Lakes      Central = Hoppers Crossing & Werribee  
 South = Point Cook & Werribee South      Rural = Little River

**Source:** WCC Proclaim Profiler Report and Building Permit Statistics.

**Note:** "Lots" refers to all lots, regardless of use, Building Permits account for dwellings and units individually.