



Wyndham Cultural Centre Theatre Tech Specs



Wyndham
Cultural
Centre
Theatre

wyndhamcity
city.coast.country

Contents

General Information	3
Auditorium	3
Stage	3
Backstage Facilities	4
Technical Information	5
Audio.....	5
Audio Visual	6
Lighting.....	7
Fly Lines	7
Standard Grid Plot	9
Venue Map 1 – Ground Floor.....	10
Venue Map 2 – Upper Floor Dressing Rooms	11
Additional Information	11
Backstage Access & Capacity	11
Occupational Health & Safety	12
Equipment & Technical Operations.....	12
Hazardous or High-Risk Activities	12
Parking	13
Smoking Policy	13
Venue Staff	13
Venue Equipment	13

Front Image Credit: Lizzy Jacobs Photography

General Information

Address	177 Watton Street, Werribee VIC 3030
Loading Dock & Stage Door	78 – 80 Synnot Street, Werribee VIC 3030

Auditorium

Seating	492 Seats
Accessibility	Ramp access to auditorium from foyer via Door 2 Row H – flat floor entry from Door 2, with 2 spaces for wheelchairs Row H - additional chairs can be removed if required Hearing Loop Accessible bathrooms

Stage

Proscenium Arch	10m wide x 6m deep x 4.5m high - standard stage working area		
	Height	5m	Borders set to 4.5m from floor
	Width	10m	Legs set to 9m opening
	Depth	7.6m	From inside Pros. Edge to back wall
Wings	PS	4 metres from legs	
	OP	1 metre from legs	
Surface	Flat Masonite (not raked)		
	Screwing into stage surface not permitted		
Orchestra Pit	Access via stairs (OP side)		
	15 x seated capacity		
	GPO's along front and rear walls		
	24 x audio inputs, 8 x returns, 2 x Speakon		
	6 x music stands		
	Talkback patching		
	Conductor Podium		
Stage Trap	No		

Stage Capacities	30 pax – movement and performing 100 pax – maximum for awards presentations only	
Stage Loading (Uniformly Distributed Load)	Loading Bay	750 kg/m ²
	Stage & Thrust	750 kg/m ²
	External Dock Lift	2000 kg
Stage Manager Position	Prompt Side corner Equipped with LED stop clock, desk lamp, house light control, backstage paging, FOH and infrared stage relay via monitors, USB charging, and talkback	
Portable Staging	1 x 2400mm x 1200mm carpeted 1 x 240mm x 1800mm carpeted 2 x sets alloy legs; 450mm and 600mm heights 1 x set alloy decking stairs; 800mm wide x 450mm high Black skirting to suit	
Elevated Working Platform	Genie Gr20 driveable vertical lift 6m - Maximum platform height Restrictions: Operator must hold a current EWP or High Risk Work Licence (for lifters up to 11m). A copy of the licence must be supplied to the venue prior to use, and the EWP JSA and EWP logbook must be completed and signed before operation.	

Backstage Facilities

Green Room	Located on stage level Equipped with stage relay, tables and chairs, no hanging space Capacity: 55 pax Please use whiteboards provided for signage. Do not use sticky tapes, blu-tack or adhesives backstage. Charges may be applied for any damages or additional cleaning.
Kitchenette	Equipped with instant boiling, and chilled, filtered water, fridge, microwave and electric oven (please advise Venue Technicians prior to use) Please note cooking utensils, crockery, cutlery and cookware are <u>not</u> provided for hirers.

Dressing Rooms

Located on the first floor (stair access only). All dressing rooms equipped with stage relay monitors and hanging space

Dressing Room 1 – 2 pax
Dressing Room 2 – 6 pax
Dressing Room 3 – 27 pax
Dressing Room 4 – 15 pax

Technical Information

Audio

Console

Yamaha CL5 Digital Mixing Desk
48 inputs, 24 outputs (pre-allocated to standard in-house setup)

System Processing

QSC Q-SYS 510i

Dynamics & Effects

2 x dynamics per channel (CL5 Digital Desk)
8 x stereo effects devices inbuilt (CL5 Digital Desk)

Speakers

2 x d&b Vi7P	Main
1 x d&b Vi10P	Centre
4 x d&b 8s	Delays
2 x d&b Vi-SUB	Subwoofers
4 x d&b 44s	Front fill (removed on request)
2 x RCF 932A	Side fill
4 x QSC K12	Foldback
2 x RCF Art 735A	
2 x Tannoy VX12	
2 x Tannoy VX8-B	

Amplifiers

1 x d&b 40D	Main, Centre & Subs
1 x d&b 10D	Front Fill & Side Fill
1x Powersoft 50Q	Foldback
1 x Powersoft 28Q	

Microphones

6 x Sennheiser E835	Corded vocal mics
3 x Sennheiser E945	
6 x Shure SM58	
11 x Shure SM57	Corded instrument mic
5 x Shure Beta SM57A	

	2 x Shure Beta 52A	Corded bass instrument mic
	3 x Shure Beta-91 (PZM)	Corded
	14 x Sennheiser EW300	Headset or handheld
	4 x pairs Behringer C2	Pencil condenser mics
	2 x Behringer C3	Dual diaphragm condenser mics
	4 x Sennheiser E904	Tom Microphones
	2 x Neumann KM184	Pencil condenser mics
	2 x Sennheiser E614	
	3 x Rode M5	
DIs	4 x Berringer Ultra-DI DI20	
	2 x Radial Pro D1 (passive, mono)	
	1 x Radial Pro D2 (passive, stereo)	
	3 x Radial JPC (stereo)	
	5 x Radial J48 (mono)	
	1 x Radial USB Pro	
Multicore	24 x XLR patch points on each P and OP, inside wall of Prosc and Pit	
	12 x XLR patch points USC, back wall	
	1 x TRC 12-way multicore with stage box (portable)	
	2 x XLR 8-way multicore without stage box (portable)	
Talkback (comms)	7 x Jands E-100 Belt Packs	
	1 x Jands E-100 Belt Pack (Lighting Console)	
	1 x Jands E-100 Belt Pack (Vison Mixer)	
	5 x Jands E-100 Belt Packs (Spare)	
	1 x Talkback Station (SM Console)	
	1 x Clear-Com Talkback Station (Bio Box)	
	4 x Green-Go Wireless Belt Packs (GGO-WBPX)	
Audio Visual		
Projector	Epson EB-PU2220B – 20,000 Lumen Projector	
	Projector fixed to FOH Bridge	
Screens	Movie Screen	5700mm x 4400mm (flown on line 15)
	Motorised Screen	4000mm x 3000mm (flown on line 6)
Playback	HDMI/USB-C	

Lighting

Console

ETC Ion Digital Lighting Console
6144 outputs
60 external faders; 1 x bank of 40, 1 x bank of 20
2 x touchscreen display monitors
Mouse and keyboard

Dimmers

12 x LSC Gen VI 12 channel dimmer/power units
Note: Dimmer count varies as some are set to hot power for devices

Data Distribution

Pathport network to DMX512 system
Programmable on request only

Lamps

20 x 25/50 degree ETC Source 4 LED Lustr Series 2
22 x 15/30 degree ETC Source 4 LED Lustr Series 2
10 x 50 degree ETC Source 4 LED Lustr Series 2
12 x Chauvet Ovation 640 C (RGBAW) – cyc
9 x Chauvet Colordash Par-Hex 12 (RGBAW)
8 x Chauvet Colordash Par-Quad 18 (RGBA) –
sidelights
8 x ProPar (RGB) – sidelights
18 x Martin Rush Par2 zoom (RGBW)
23x 1200w Cantata Fresnels
2 x Molefay Blinders (on request only)
1 x Mirrorball and motor (lit with 2 x 750w Source 4 26
degrees w/ iris)

Moving Lights

9 x PR Lighting XRLED 500 Spots (RGBW)
10 x Martin Rush MH6 (RGBW)

Follow Spots

2 x Robert Juliat “Topaze” Follow spots 1200w MSD

Smoke Machines

2 x Unique 2 Haze Machines (water based fluid)

Fly Lines

Motorised Lines

LX bars 1 – 3

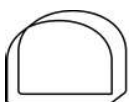
Counterweight Lines

25 available, plus house curtain
Single purchase counterweight system, operated from stage floor
on Prompt Side.

300kg maximum barrel load (evenly distributed)
Fly tower grid placement allows a maximum fly-out height of approx. 5m
Scenery with a height of 5.5m will remain partially visible to the audience when flown out
System is operable by venue technicians only

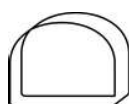
Rigging

Limited rigging hardware is available in-house. This includes batten straps (yuppy straps), round slings of varying lengths, bow shackles and wire rope slings.

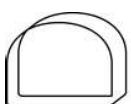
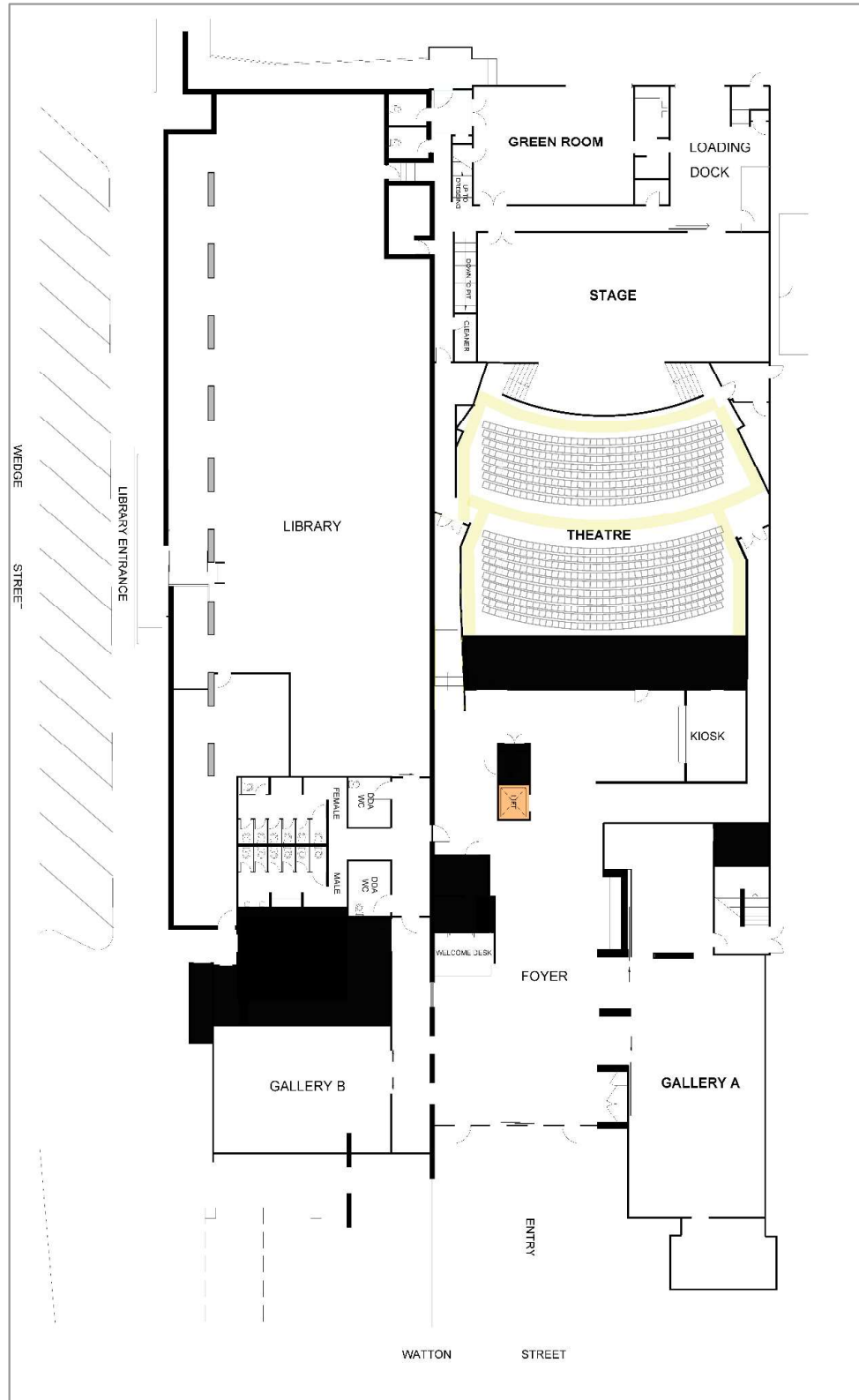


Standard Grid Plot

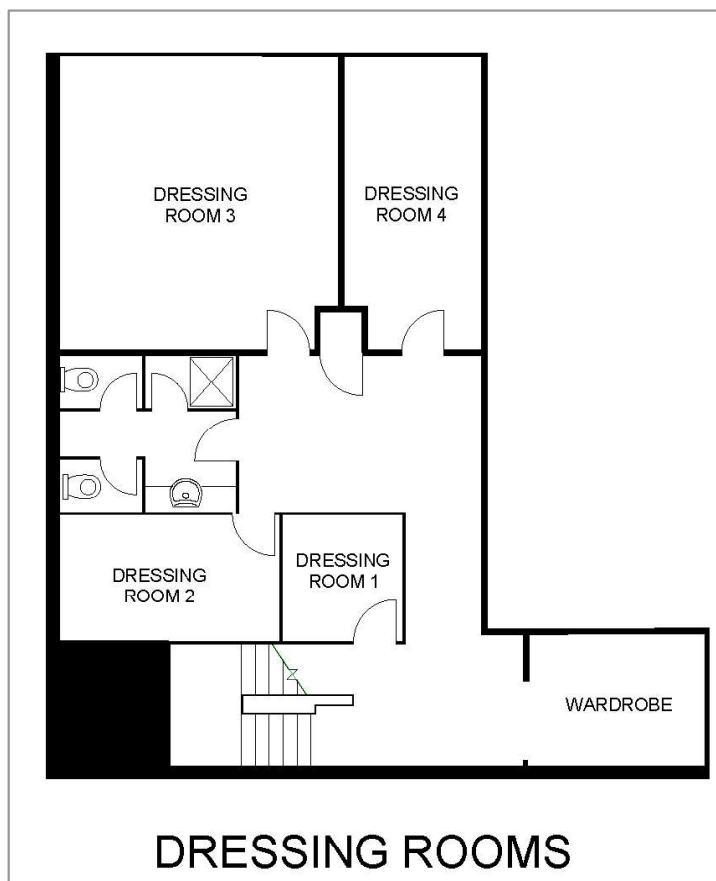
Line	Distance (mm)	Description
	0	Proscenium Rear Edge
HC	300	House Curtain - (Bi-part or Fly)
.5	600	Legs 1 & Border 1 (Dead Hung)
1	850	Scrim
2	1150	Electrics Bar 1 (LX1) – Motorised (approx. 230kg)
3	1450	<i>Scenery Bar 2 – No Lights</i>
4	1650	Electrics Bar 1A - Moving Lights
5		Not installed - Obstructed by Fire Sprinkler Pipe
6	2050	Small Motorised Projection Screen
7*	2250	*Legs 2 & Border 2 Dead hung cable from Outrigger to Grid
8	2450	Black Curtain (1/4 Tab - Flown only)
9	2650	<i>Scenery Bar 3</i>
10	2950	Electrics Bar 2 (LX2) – Motorised (approx. 230kg)
11	3250	Mirror Ball & 2 x spots
12	3450	<i>Scenery Bar 4</i>
13	3650	Black Curtain (Mid Tab) - (Bi-part or Fly)
14		Not installed - Structural Obstruction
15	4050	Large movie screen
16*	4250	*Legs 3 & Border 3 Dead hung cable from Outrigger to Grid
17	4450	<i>Scenery Bar 5</i>
18	4650	<i>Scenery Bar 6</i>
19	4950	Electrics Bar 3 (LX3) – Motorised (approx. 230kg)
20	5250	<i>Scenery Bar 7</i>
21	5450	<i>Scenery Bar 8</i>
22	5450	Electrics Bar 3A (LX3a)
23	5850	<i>Scenery Bar 9</i>
24*	6050	*Legs 4 & Border 4 – Dead hung cable from outrigger to grid
25	6250	Black Curtain (rear tab) – bi-part or fly
26	6450	Electrics Bar 4 (LX4) – cyc flood bar
27	6650	Black Curtain (Tab) – flown only
28	6850	Black Sequin Curtain
29	7050	Silver Lame Curtain
30	7300	Cyclorama
	7350	Back wall



Venue Map 1 – Ground Floor



Venue Map 2 – Upper Floor Dressing Rooms



Additional Information

The following information is provided as a practical summary of the Wyndham Cultural Centre Conditions of Hire. These notes do not replace the Conditions of Hire and should be read in conjunction with them.

Backstage Access & Capacity

Backstage access is via Stage Door (Synnot Street) only. Entry through the auditorium is not permitted. The hirer must appoint a Stage Door person to maintain an accurate list of all cast, crew, and staff onsite during all rehearsals and performances. This person is responsible for admitting authorised persons only.

To comply and maintain safe conditions, the maximum backstage capacity is 150 people, including a maximum of 50 people in first-floor dressing rooms. This total includes Council staff, performers, crew, and volunteers.

Occupational Health & Safety

All rehearsals, performances, and events in the theatre must comply with Wyndham Cultural Centre's Occupational Health & Safety (OHS) guidelines. Unsafe practices will not be permitted. Venue staff have authority to instruct hirers to cease any activity deemed unsafe. Hirers may be required to provide Risk Assessments, Safe Work Method Statements (SWMS), and Job Safety Analysis (JSA), or other documentation as required.

Hirers must supply their own first aid kit for backstage use.

Equipment & Technical Operations

The hirer must ensure any additional equipment brought in is in safe working order, compliant with venue systems, and approved by the Venue Technician at least 4 weeks prior. Hirer-provided operators (e.g. lighting/audio), on venue systems, must be approved by the Team Leader Technical Services and demonstrate competence. If not, they will be replaced at the hirer's expense.

Electrical equipment must be tested and tagged in accordance with **AS/NZS 3760**. Untagged equipment will not be permitted.

Radio frequency devices must comply with Australian standards and operate within legal frequencies. Frequencies must be provided in advance to avoid clashes.

Flown items and scenic elements must be treated with fire retardant and certified as such. Documentation must be supplied if requested.

Only inducted **venue technicians** may operate the counterweight flying system.

Hazardous or High-Risk Activities

The use of hazardous or high-risk items is subject to prior written approval from Council. Hirers must submit a **Notification of Hazardous Event Conditions Form** at least 6 weeks prior to the booking. Examples of hazardous/high-risk activities include:

- Overhead rigging of sets or people (circus apparatus, harness work)
- Temporary staging/platforms
- Prop firearms (replica, deactivated, blank firing)
- Open flame (candles, cigarettes, fire effects)
- Pyrotechnics, confetti/flitter cannons, ballon drops
- Lasers
- Smoke or haze effects that are not water based
- Water/liquid effects (including bubbles)

- Live animals

Council may require further documentation (SWMS, JSA, MSDS, licences) and additional venue staff, charged to the hirer. Council reserves the right to refuse any hazardous activity.

Parking

Complimentary timed parking is available in the venue car park and surrounding streets. Observe any parking signs relevant to the area. Loading Bay parking is limited, and spaces for cast or crew vehicles are allocated at the discretion of the venue. Removable bollards allow access for larger trucks and trailers, and vehicles must park only in designated areas to maintain emergency egress.

Smoking Policy

Wyndham City Council is a **smoke-free workplace**. Smoking is prohibited in all enclosed areas and within 4 metres of entrances, exits, windows, and ventilation systems.

Venue Staff

A minimum of two venue technicians are included in standard venue hire. Wyndham City Council also provides additional staff as required for all performances, rehearsals, and front-of-house functions, in line with emergency requirements and to ensure the safety and positive experience of all venue users and audiences.

Staff are rostered in accordance with EA requirements and best practice, and overtime penalties may apply where additional hours are required. Minimum staffing levels are determined at the discretion of the venue.

All external staff, crew, performers, and volunteers remain under the direct authority and supervision of venue staff at all times.

Venue Equipment

The Venue reserves the right to change, substitute, or remove from use, any items of venue equipment at any time. Specific venue equipment may not always be available for use at hire time and a substitute may not be available. Hirers using venue equipment may be liable for any loss, damage, or breakage caused during their hire period.

For any questions or clarifications, please contact venuetech@wyndham.vic.gov.au

We look forward to seeing you at Wyndham Cultural Centre!