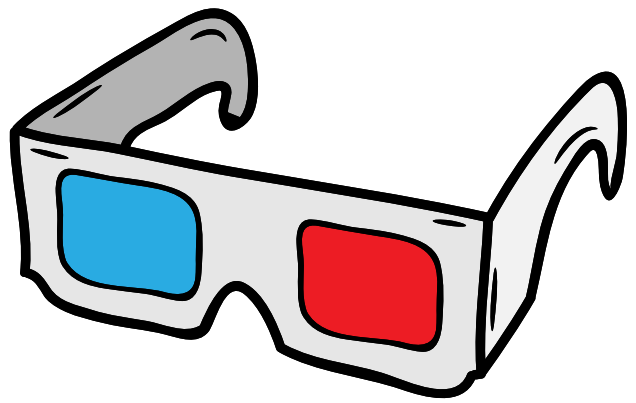


3D Glasses

What you need:

- Glasses template on next page
- Paper
- Blue and red texta/permanent marker
- Blue and red cellophane
- Glue



What to do:

1. Print out the glasses template on the next page. Colour the glasses in, cut them out and cut out the part where the lens would go.
2. Stick red cellophane on one lens and blue on the other. If you do not have cellophane, you can use red and blue permanent marker and colour some plastic in. I used a plastic pocket for this step.
3. Now experiment and see what type of drawing you can make 3D when you view it through your glasses. These types of drawings are called anaglyph.
4. Trace your hand on paper using blue texta. Go over the hand print to make the lines a lot thicker. Now move your hand up and to the left a little. Trace your hand again using red texta, then make the lines thicker.
5. The two hand prints will overlap and if you view the image through your glasses it should look 3D!
6. Now colour in the blue handprint blue and the red handprint red. It will look black where they overlap. Have a look through the 3D glasses. Does it look different compared to before?



