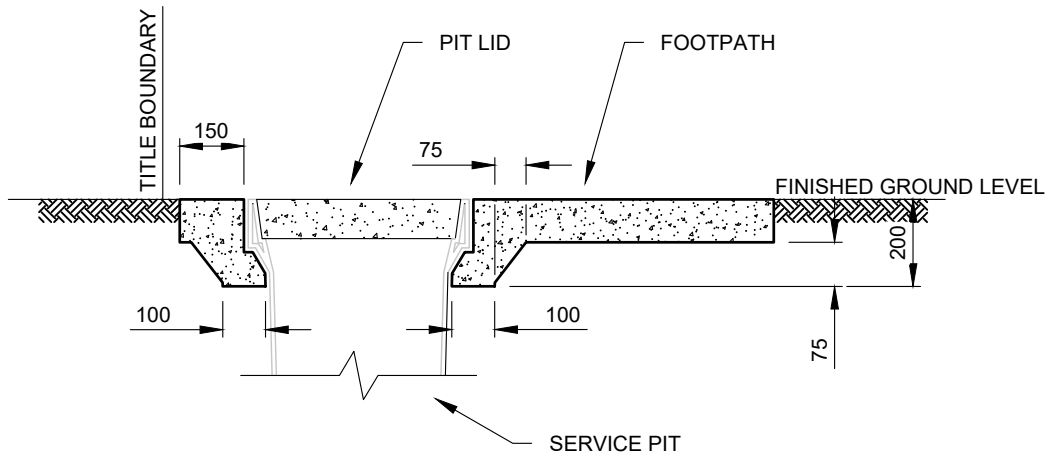
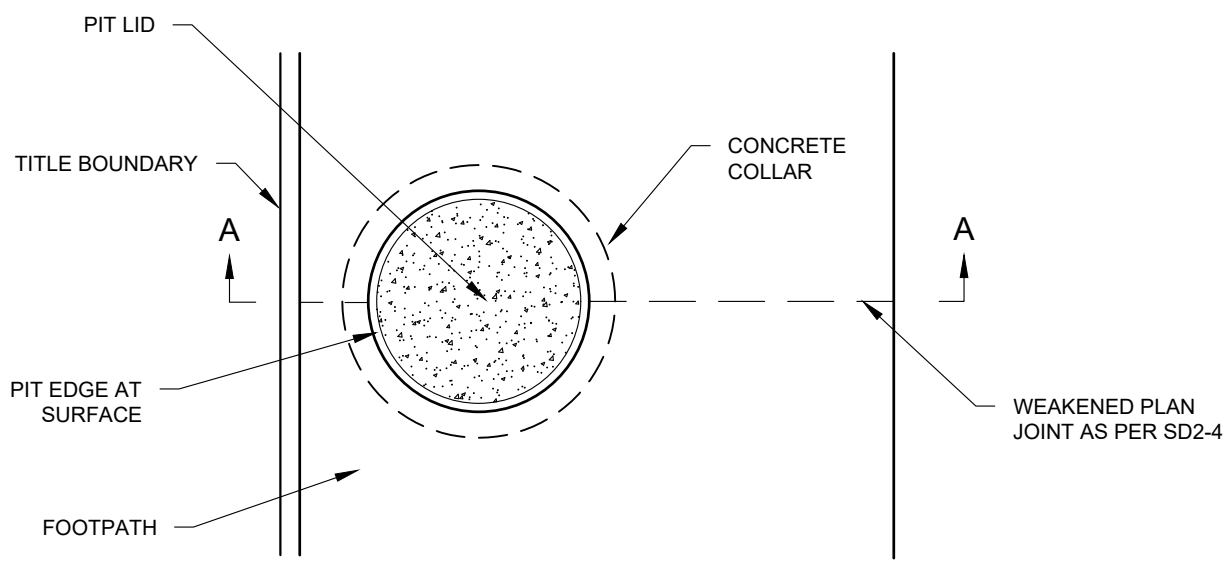


Drawing name: M:\Engineering Services\Engineering Design Projects\RESOURCE References\WCC Standard Drawings\SD2-6.dwg (28 May, 2024)



**SECTION A-A**




**PLAN**

**NOTES :**

1. THE SERVICE PIT IS TO BE INSTALLED WITH ITS OUTER EDGE NOT LESS THAT 150mm FROM THE EDGE OF THE FOOTPATH.
2. THE CONCRETE COLLAR SUPPORT IS TO BE 200mm THICK WITHIN THE FOOTPATH.
3. FOOTPATH REINFORCEMENT TO BE CONTINUOUS ON ALL SIDES OF THE PIT.
4. FOOTPATH REINSTATEMENT WIDTH TO MATCH EXISTING FOOTPATH WIDTH.
5. CONCRETE STRENGTH OF 25MPA AT 28 DAYS.
6. ALL DIMENSIONS IN MILLIMETRES UNLESS OTHERWISE SHOWN.

REV	AMENDMENTS	APPROVAL	DATE
B	EDITED NOTES 1 & 2. MINOR DRAFTING MODIFICATIONS		20-06-09
C	UPDATED TO REFLECT CURRENT STANDARDS	M.BRIGANDI	21-05-24

**ELECTRICAL PIT IN FOOTPATH**



45 PRINCES HIGHWAY  
WERRIBEE, VIC 3030

TEL: 1300 023 411  
wyndham.vic.gov.au

CAD FILE: SD2-6.DWG
DRAWN DATE: FEB 2024
REVISION: C
DRAWING NO.: <b>SD2-6</b>

GENERAL NOTES: -DRAWINGS ARE NOT TO SCALE.  
 -ALL MEASUREMENTS ARE IN MILLIMETERS UNLESS OTHERWISE STATED.  
 -FOR UP TO DATE DRAWINGS PLEASE CHECK WYNDHAM CITY COUNCIL WEBSITE.  
 -ALL STANDARD DRAWINGS TO BE USED IN CONJUNCTION WITH SD1-1 (STANDARD DRAWINGS CONDITIONS OF USE).