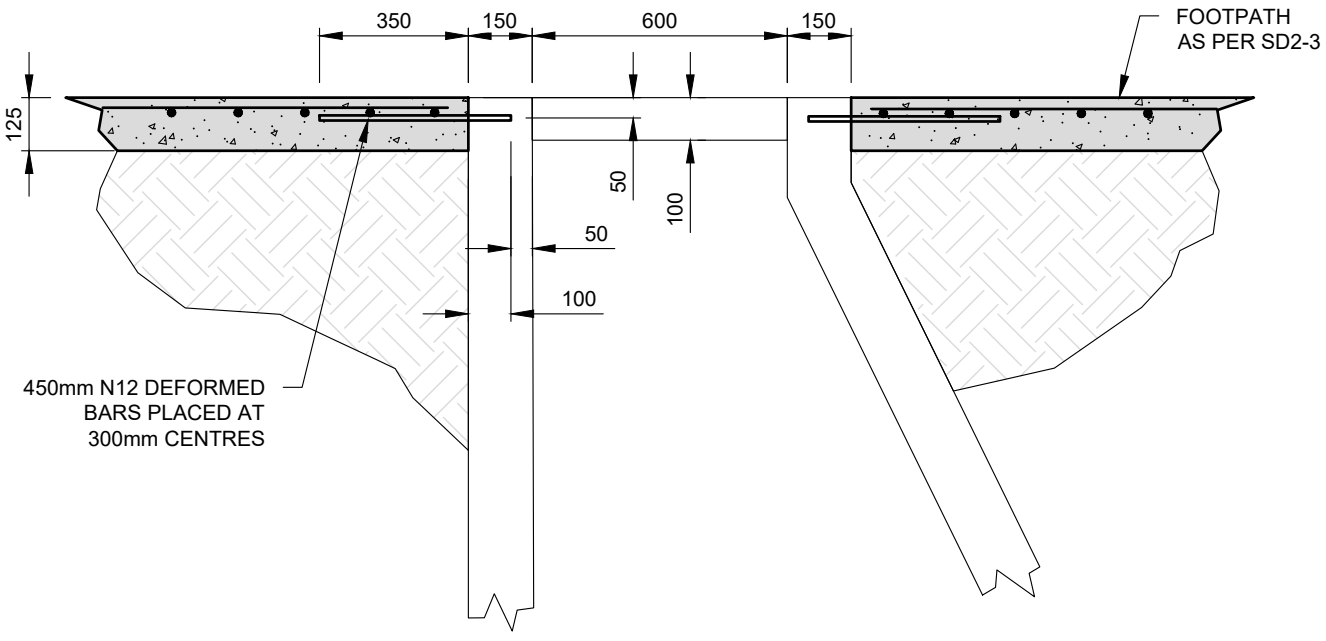
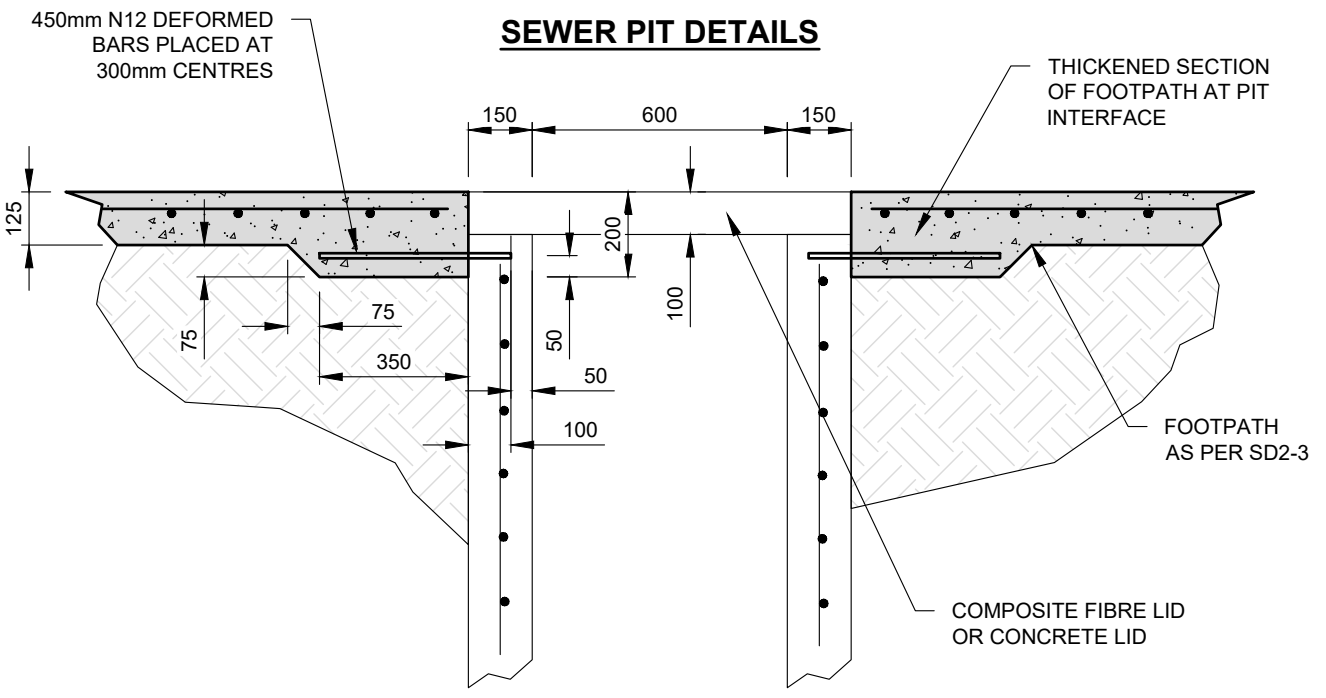


Drawing name: M:\Engineering Services\Engineering Design Projects\RESOURCE References\WCC Standard Drawings\SD2-5A.dwg (28 May, 2024)



SEWER PIT DETAILS



DRAINAGE PIT DETAILS

- NOTES:**
1. ALL DIMENSIONS GIVEN ARE INDICATIVE ONLY AND DIMENSIONS ON SITE MAY VARY.
 2. REFER TO SD2-5 FOR FURTHER INFORMATION ON DOWEL BAR SPACING ARRANGEMENTS.
 3. REFER TO SD2-6 FOR PIT COLLAR DETAILS.
 4. ALL DIMENSIONS IN MILLIMETRES UNLESS SHOWN OTHERWISE.

REV	AMENDMENTS	APPROVAL	DATE
A	ISSUED FOR CONSTRUCTION		JULY 19
B	UPDATED TO REFLECT CURRENT STANDARDS	M.BRIGANDI	21-05-24

**TYPICAL CONCRETE FOOTPATH CONSTRUCTION
DETAILS AT SEWER & DRAINAGE PITS**



45 PRINCES HIGHWAY
WERRIBEE, VIC 3030

TEL: 1300 023 411
wyndham.vic.gov.au

CAD FILE: SD2-5A.DWG
DRAWN DATE: FEB 2024
REVISION: B
DRAWING NO.: SD2-5A

GENERAL NOTES:

- DRAWINGS ARE NOT TO SCALE.
- ALL MEASUREMENTS ARE IN MILLIMETERS UNLESS OTHERWISE STATED.
- FOR UP TO DATE DRAWINGS PLEASE CHECK WYNDHAM CITY COUNCIL WEBSITE.
- ALL STANDARD DRAWINGS TO BE USED IN CONJUNCTION WITH SD1-1 (STANDARD DRAWINGS CONDITIONS OF USE).