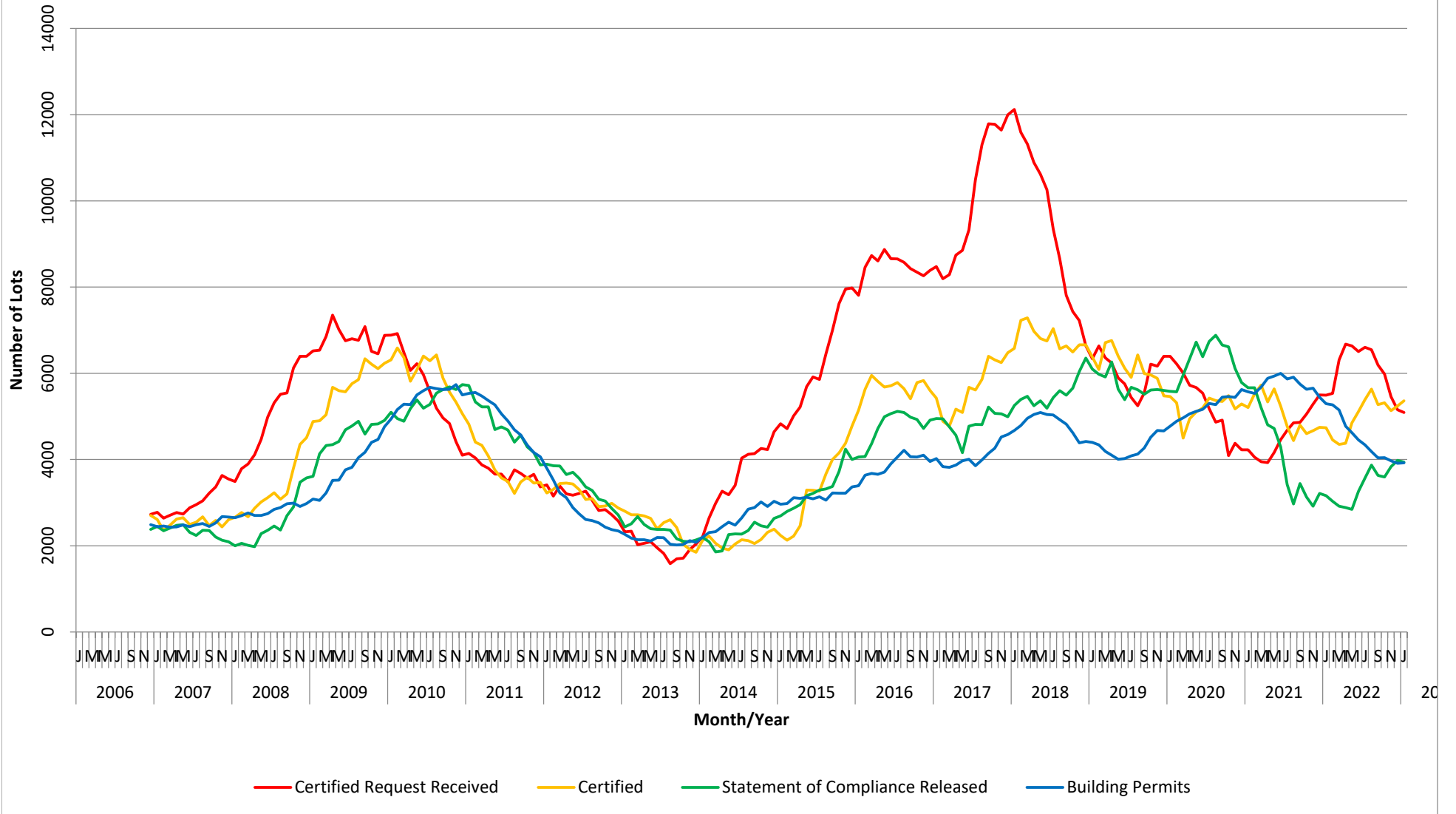


YEAR	3, 6 and 12 MONTH RUNNING TOTALS	NUMBER OF DWELLINGS/UNITS APPROVED BY BUILDING PERMITS (By Month)												YEARLY TOTAL			
		J	F	M	A	M	J	J	A	S	O	N	D				
2001																	2031
2002		126	249	216	224	267	239	250	241	183	269	196	182				2642
	THREE MONTHS	616	645	591	689	707	730	756	730	674	693	648	647				
	SIX MONTHS	1297	1248	1304	1305	1352	1321	1445	1437	1404	1449	1378	1321				
	TWELVE MONTHS	2061	2194	2291	2396	2516		2635	2742	2685	2708	2754	2642				
2003		138	221	278	265	212	252	291	214	228	355	222	230				2906
	THREE MONTHS	516	541	637	764	755	729	755	757	733	797	805	807				
	SIX MONTHS	1209	1189	1284	1280	1296	1366	1519	1512	1462	1552	1562	1540				
	TWELVE MONTHS	2654	2626	2688	2729	2674	2687	2728	2701	2746	2832	2858	2906				
2004		113	253	164	285	288	249	206	204	207	218	255	172				2614
	THREE MONTHS	565	596	530	702	737	822	743	659	617	629	680	645				
	SIX MONTHS	1362	1401	1337	1267	1333	1352	1445	1396	1439	1372	1339	1262				
	TWELVE MONTHS	2881	2913	2799	2819	2895	2892	2807	2797	2776	2639	2672	2614				
2005		117	168	130	243	215	305	192	169	192	192	242	175				2340
	THREE MONTHS	544	457	415	541	588	763	712	666	553	553	626	609				
	SIX MONTHS	1173	1137	1060	1085	1045	1178	1253	1254	1316	1265	1292	1162				
	TWELVE MONTHS	2618	2533	2499	2457	2384	2440	2426	2391	2376	2350	2337	2340				
2006		161	202	230	169	215	184	214	240	268	205	216	188				2492
	THREE MONTHS	578	538	593	601	614	568	613	638	722	713	689	609				
	SIX MONTHS	1131	1164	1202	1179	1152	1161	1214	1252	1290	1326	1327	1331				
	TWELVE MONTHS	2384	2418	2518	2444	2444	2323	2345	2416	2492	2505	2479	2492				
2007		112	219	200	178	259	142	264	266	201	286	360	181				2668
	THREE MONTHS	516	519	531	597	637	579	665	672	731	753	847	827				
	SIX MONTHS	1229	1208	1140	1113	1156	1110	1262	1309	1310	1418	1519	1558				
	TWELVE MONTHS	2443	2460	2430	2439	2483	2441	2491	2517	2450	2531	2675	2668				
2008		93	266	267	119	259	184	363	306	293	299	280	250				2979
	THREE MONTHS	634	540	626	652	645	562	806	853	962	898	872	829				
	SIX MONTHS	1387	1387	1453	1286	1185	1188	1458	1498	1524	1704	1725	1791				
	TWELVE MONTHS	2649	2696	2763	2704	2704	2746	2845	2885	2977	2990	2910	2979				
2009		200	234	439	412	262	423	419	535	415	528	351	544				4762
	THREE MONTHS	730	684	873	1085	1113	1097	1104	1377	1369	1478	1294	1423				
	SIX MONTHS	1628	1556	1702	1815	1797	1970	2189	2490	2466	2582	2671	2792				
	TWELVE MONTHS	3086	3054	3226	3519	3522	3761	3817	4046	4168	4397	4468	4762				
2010		381	449	567	402	485	520	498	507	394	530	460	305				5498
	THREE MONTHS	1276	1374	1397	1418	1454	1407	1503	1525	1399	1431	1384	1295				
	SIX MONTHS	2754	2668	2820	2694	2828	2804	2921	2979	2806	2934	2909	2694				
	TWELVE MONTHS	4943	5158	5286	5276	5499	5596	5675	5647	5626	5628	5737	5498				
2011		417	473	482	297	387	313	331	302	271	299	284	208				4064
	THREE MONTHS	1182	1195	1372	1252	1166	997	1031	946	904	872	854	791				
	SIX MONTHS	2613	2579	2667	2434	2361	2369	2283	2112	1901	1903	1800	1695				
	TWELVE MONTHS	5534	5558	5473	5368	5270	5063	4896	4691	4568	4337	4161	4064				
2012		149	205	177	188	157	170	200	277	216	203	226	176				2344
	THREE MONTHS	641	562	531	570	522	515	527	647	693	696	645	605				
	SIX MONTHS	1513	1416	1322	1211	1084	1046	1097	1169	1208	1223	1292	1298				
	TWELVE MONTHS	3796	3528	3223	3114	2884	2741	2610	2585	2530	2434	2376	2344				
2013		70	117	142	188	125	250	197	126	198	217	313	133				2076
	THREE MONTHS	472	363	329	447	455	563	572	573	521	541	728	663				
	SIX MONTHS	1168	1008	934	919	818	892	1019	1028	1084	1113	1301	1184				
	TWELVE MONTHS	2265	2177	2142	2142	2110	2190	2187	2036	2018	2032	2119	2076				
2014		193	224	162	304	232	182	362	329	233	347	210	255				3033
	THREE MONTHS	639	550	579	690	698	718	776	873	924	909	790	812				
	SIX MONTHS	1180	1278	1242	1329	1248	1297	1466	1571	1642	1685	1663	1736				
	TWELVE MONTHS	2199	2306	2326	2442	2549	2481	2646	2849	2884	3014	2911	3033				
2015		124	241	296	290	255	148	407	250	401	341	214	401				3368
	THREE MONTHS	589	620	661	827	841	693	810	805	1058	992	956	956				
	SIX MONTHS	1498	1410	1473	1416	1461	1354	1637	1646	1751	1802	1761	2014				
	TWELVE MONTHS	2964	2981	3115	3101	3124	3090	3135	3056	3224	3218	3222	3368				
2016		148	485	337	272	304	343	561	407	253	332	260	255				3957
	THREE MONTHS	763	1034	970	1094	913	919	1208	1311	1221	992	845	847				
	SIX MONTHS	1755	1990	1926	1857	1947	1889	2302	2224	2140	2200	2156	2068				
	TWELVE MONTHS	3392	3636	3677	3659	3708	3903	4057	4214	4066	4057	4103	3957				
2017		212	301	319	324	402	379	412	543	401	450	520	315				4578
	THREE MONTHS	727	768	832	944	1045	1105	1193	1334	1356	1394	1371	1285				
	SIX MONTHS	1719	1613	1679	1671	1813	1937	2349	2379	2461	2587	2705	2641				
	TWELVE MONTHS	4021	3837	3819	3871	3969	4005	3856	3992	4140	4258	4518	4578				
2018		304	419	484	413	448	334	399	437	299	252	286	343				4418
	THREE MONTHS	1139	1038	1207	1316	1345	1195	1181	1170	1135	988	837	881				
	SIX MONTHS	2533	2409	2492	2455	2383	2402	2497	2515	2330	2169	2007	2016				
	TWELVE MONTHS	4670	4788	4953	5042	5088	5046	5030	4924	4822	4624	4390	4418				
2019		284	363	330	324	355	352	458	482	441	498	443	336				4666
	THREE MONTHS	913	990	977	1017	1009	1031	1165	1292	1381	1421	1382	1277				
	SIX MONTHS	1901	1827	1858	1930	1999	2008	2182	2301	2412	2586	2674	2658				
	TWELVE MONTHS	4398	4342	4188	4099	4006	4024	4083	4128	4270	4516	4673	4666				
2020		393	476	409	419	410	402	593	453	614	516	419	522				5626
	THREE MONTHS	1172	1205	1278	1304	1238	1231	1405	1448	1660	1583	1549	1457				
	SIX MONTHS	2593	2587	2555	2476	2443	2509	2709	2686	2891	2988	2997	3117				
	TWELVE MONTHS	4775	4888	4967	5062	5117	5167	5302	5273	5446	5464	5440	5626				
2021		340	439	556	620	460	467	461	497	451	397	444	312				5444
	THREE MONTHS	1281	1301														

Number of Lots Processed - Wyndham

12 Month Running Totals: December 2006 - January 2023

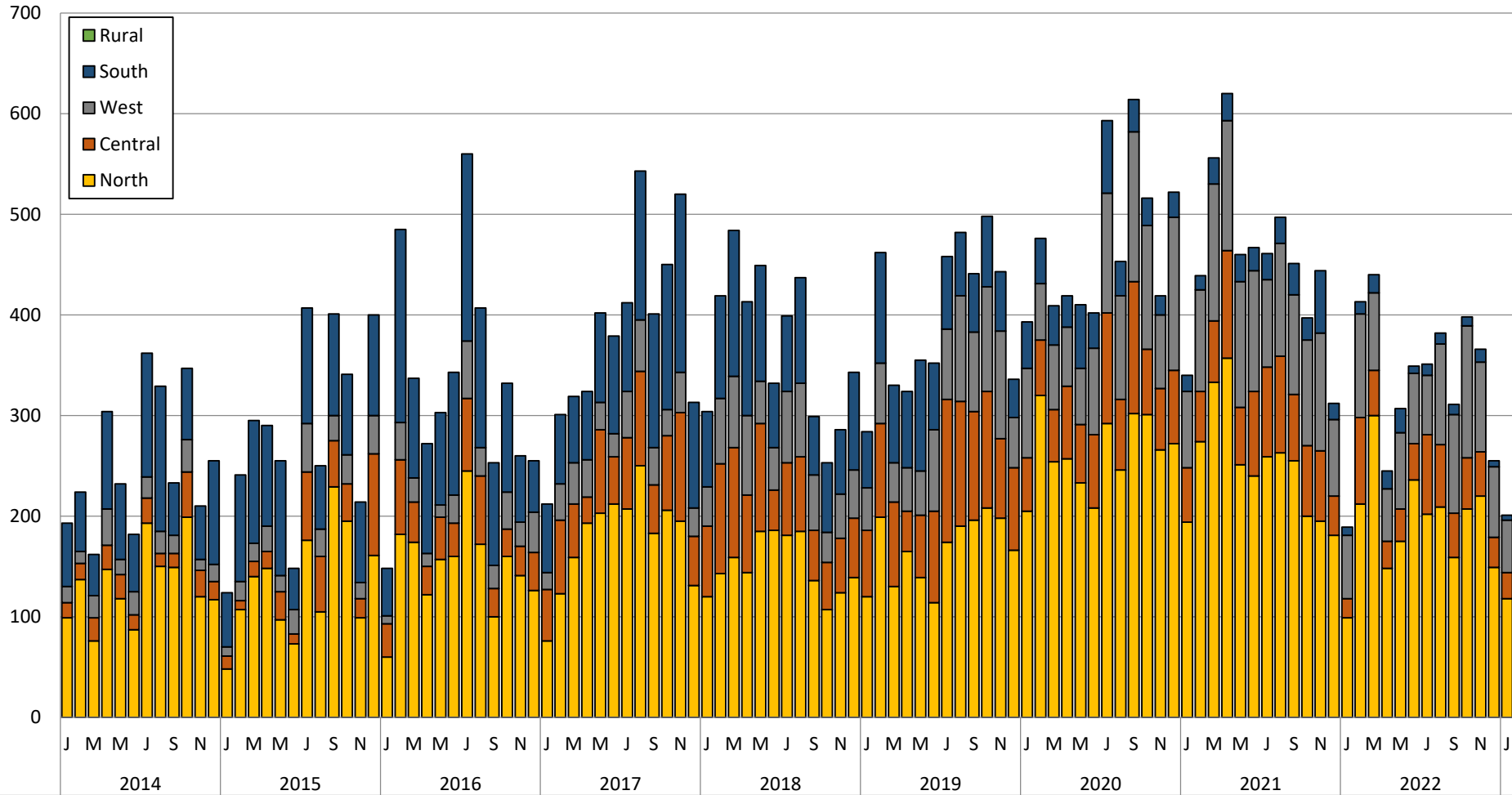
Source: WCC Proclaim Profiler Report and Building Permit Statistics . Note: "Lots" refers to all lots, regardless of use, Building Permits account for dwellings and units individually.



Number of Approved Dwelling/Units (by Dwelling Permit Area and Month)

January 2014 - January 2023

Source: WCC Building Permit Statistics . Note: "Lots" refers to all lots, regardless of use, Building Permits account for dwellings and units individually.



Note: Dwelling permit areas contain the following suburbs:
 North = Laverton, Mount Cottrell, Tarneit, Truganina & Williams Landing
 South = Point Cook & Werribee South

West = Wyndham Vale, Mambourin & Manor Lakes
 Rural = Little River

Central = Hoppers Crossing & Werribee