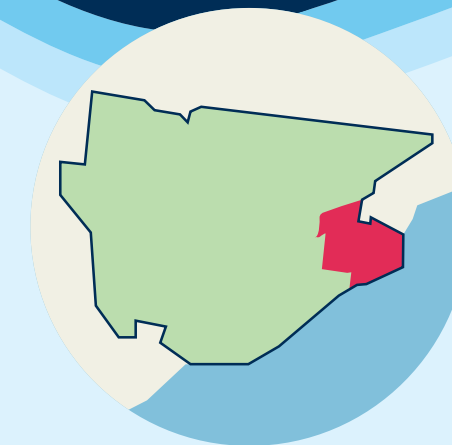
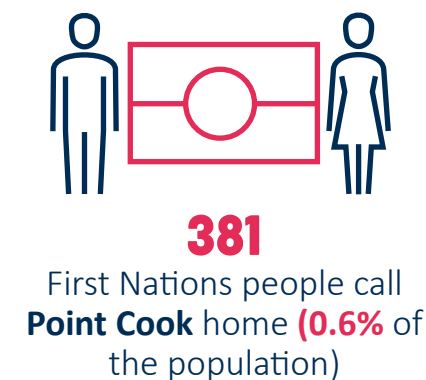
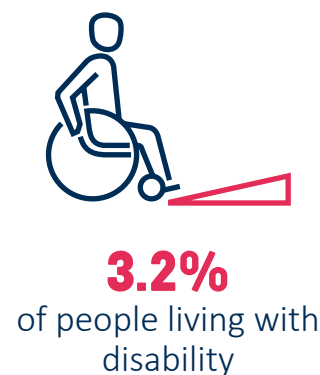
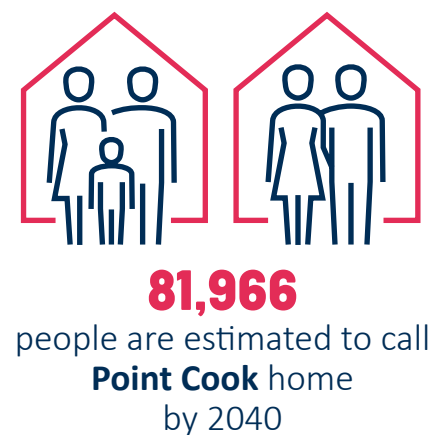
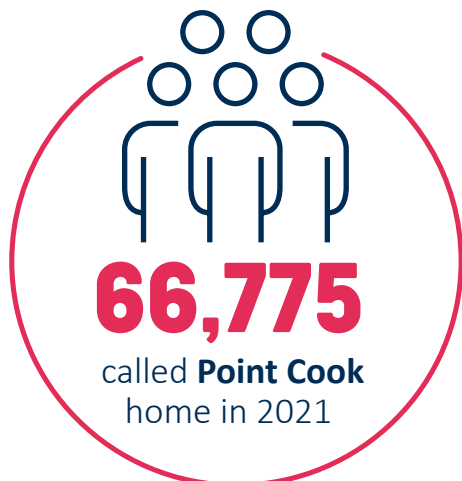


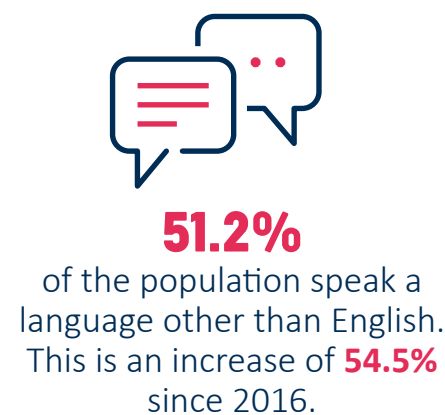
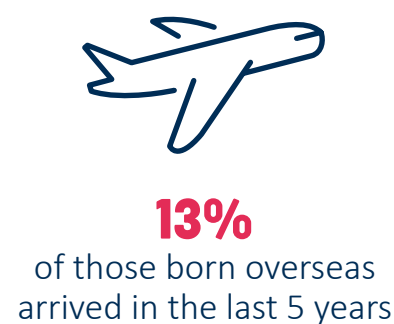
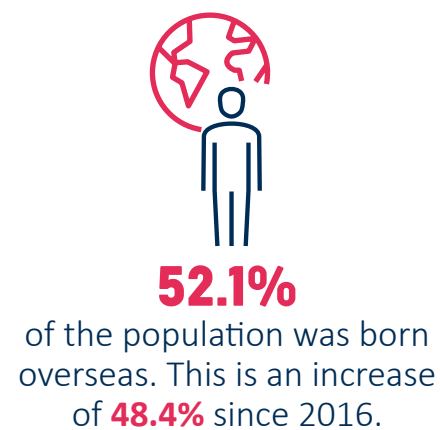
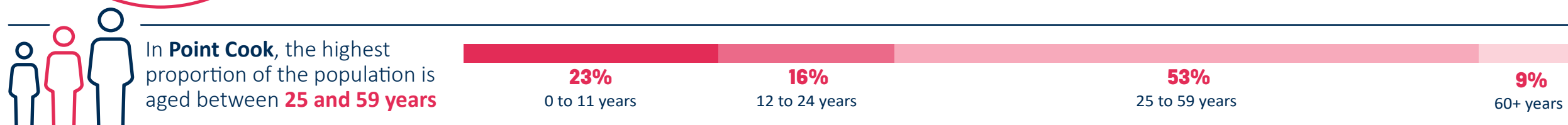
Point Cook

People & Community



Point Cook

Point Cook is the largest suburb in Wyndham according to population size. Point Cook is located in the south east area of Wyndham. It is bounded by the Princes Freeway and the suburb of Seabrook in the north, Port Phillip Bay in the east and south, and the western boundary of the RAAF Williams Point Cook Base and Aviation Road in the west.

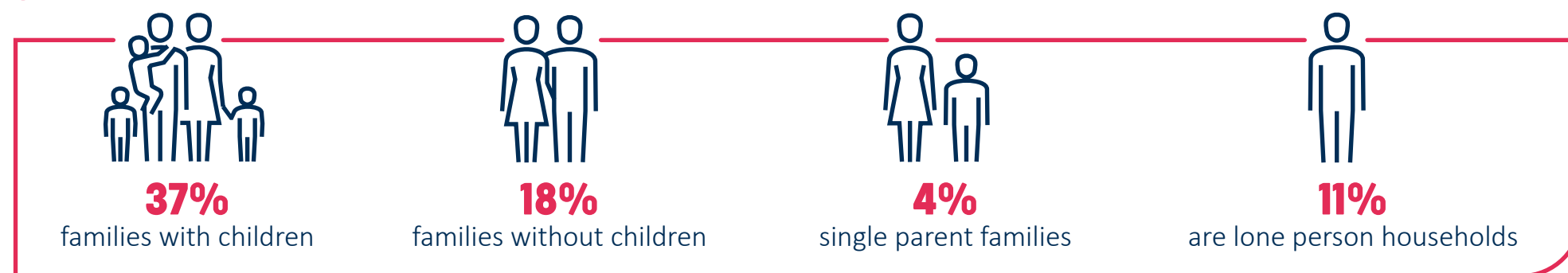


The Top Five languages spoken in **Point Cook** other than English include:

- 1 Mandarin**
- 2 Hindi**
- 3 Punjabi**
- 4 Urdu**
- 5 Telugu**

The Top Five religions identified in **Point Cook** include:

- 1 Western (Roman) Catholic**
- 2 Hinduism**
- 3 Islam**
- 4 Christian**
- 5 Buddhism**



* Information provided is based on Australian Bureau of Statistics 2021 Census (ABS) data conducted on 10 August 2021.

Places & Spaces



20,906

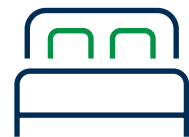
households in **Point Cook**.
This is an increase of **33%**
since 2016.



\$793,000

Median house price in **Point Cook** as of September 2022

Housing is **100%**
more affordable in **Point Cook** than in Greater Melbourne



Dwellings with **3 bedrooms** were the most common for **Point Cook**



14%

of residents fully own their home

49%

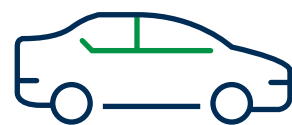
of residents have a mortgage over their home

31%

are renting privately

7.6%

of dwellings were unoccupied in 2021



93%

of people own a car

Earning & Learning



\$2,392

Is the median weekly household income in **Point Cook**



\$2,115

Is the median monthly mortgage repayment for households in **Point Cook**



\$400

Is the median weekly rental payment in **Point Cook**



34,629

people participate in the labour force



41.1%

of people aged 15 years and over hold a formal qualification (bachelor or higher degree, advanced diploma or diploma, vocational qualifications)



4.7%

of people aged 15 years and over attend university

2.4%

of people aged 15 years and over attend a TAFE or vocational institution

7.6%

of young people aged 15-24 years old are disengaged with employment and /or education



12.2%

of people aged 15 years and over hold a vocational qualification



2.8%

of the **Point Cook** population were unemployed as of June 2022



The Top Two modes of transport to work include:

- 1 Car - as driver**
- 2 Worked at home**

The working population of **Point Cook** most commonly work for the following industries:

- 1 Professional, Scientific and Technical Services**
- 2 Health Care and Social Assistance**
- 3 Retail Trade**
- 4 Construction**
- 5 Financial and Insurance Services**