

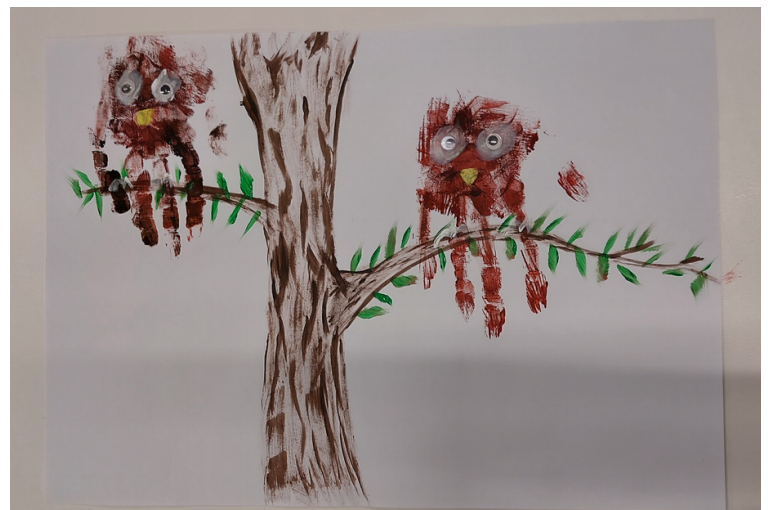
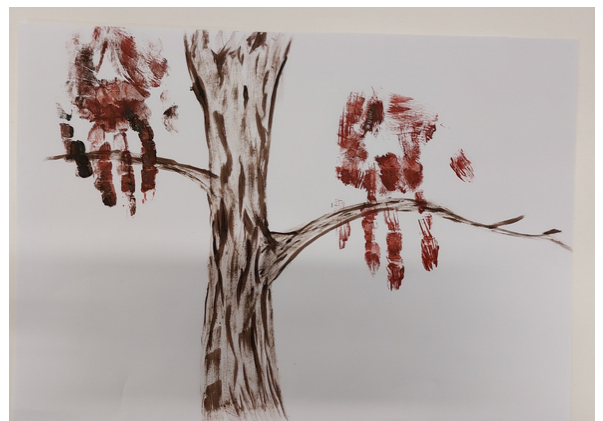
OWL HANDPRINTS

What you need:

- Paper
- Paint
- Paintbrushes
- Googly eyes
- Glue

What to do:

- Paint a large tree on your paper, making sure it has a couple of good sized branches so your handprints will fit.
- Paint your hand with any colour paint. Whatever colour you choose will be the colour of your owl.
- Turn your paper upside down and press your hand firmly over the branch, making sure your fingertips are over the other side of the branch.
- Repeat to create more owls on your branches.
- Clean your hands.
- Turn your paper back around the correct way.
- Paint on feet and a nose.
- Glue 2 googly eyes on each owl.
- Paint the rest of your scene around the owls, this could be leaves, the sky, nests or the ground.



Show us a photo on the [Kids Club Online Gallery!](#)