

Loch Ness

Monster

Artwork



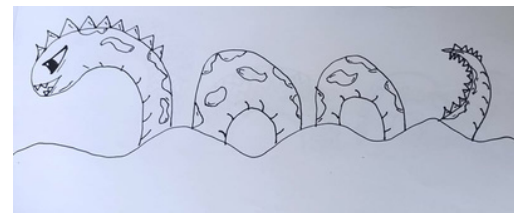
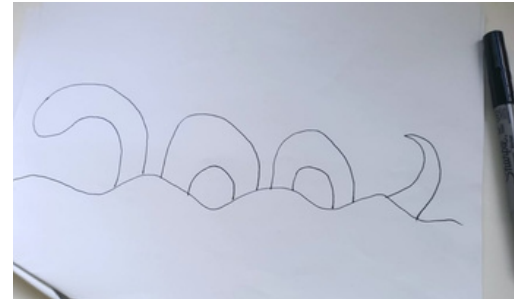
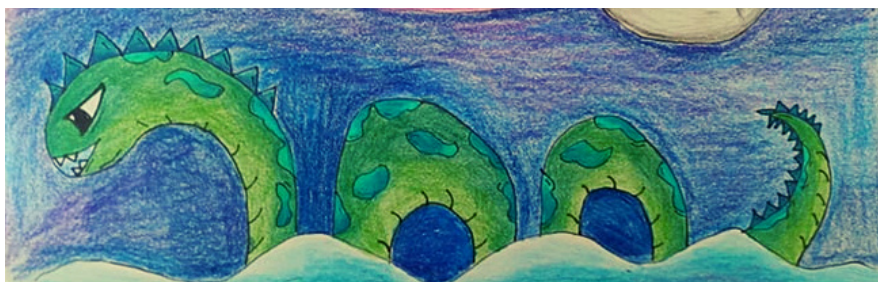
I've always been fascinated by the Loch Ness Monster myth. Follow these instructions to draw one like mine!

What you need:

- Paper
- Pencils/textas
- Black pen

What to do:

1. Draw the shape of the Loch Ness Monster in the water. I drew a wavy line for the water, then the head, body and tail seen above the water.
2. Draw a background. Then add in the details on the monster.
3. Here is a tip! Start off drawing in greylead pencil so if you make a mistake, you can rub it out. When you are happy with how the drawing looks, then go over the lines in black pen and rub out the pencil lines.
4. Colour the monster in. When colouring, if you use more than one shade of a colour, it helps make the drawing look more lifelike. I coloured in the monster's body light green, then shaded dark green along the top so it looks like the body is curved.



5. For the waves, I used a mix of light blue, dark blue and green. I wanted the sky to look like night time, so I used a mix of dark blue and purple.



Show us a photo on the [Kids Club Online Gallery!](#)