

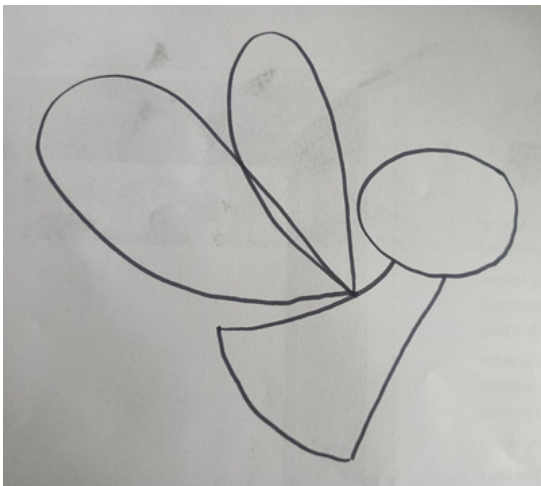
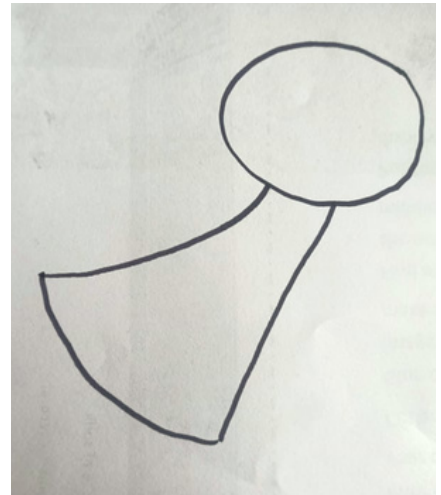
How to draw a Fairy

What you need:

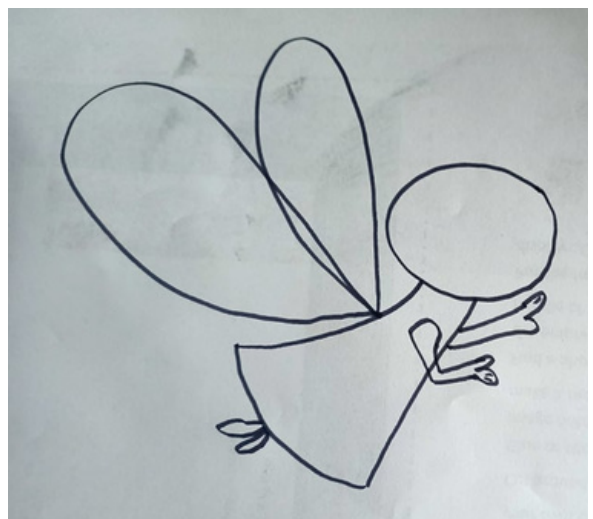
- Paper
- Colour pencils/textas
- Black texta
- Rubber
- Grey lead



1. Using grey lead, draw a circle for the head, and add a body shape. Use grey lead so you can rub out the extra lines later. I used black texta here so you can see the lines clearly.

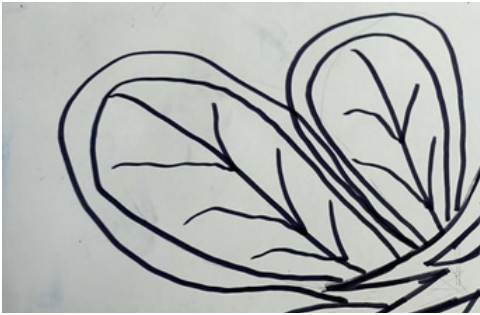


2. Draw in wings.

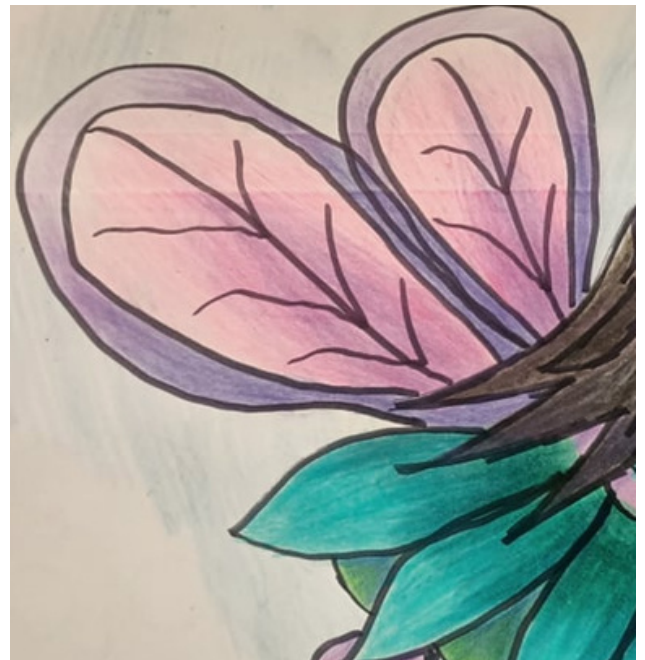


3. Draw in arms and legs for the fairy.

4. Add in the face and hair. Finish up the fairy by drawing in extra details for the wings and clothing. When you are happy with how the fairy looks, go over the grey lead in black texta and then rub out the extra grey lead lines.



5. Colour in the fairy. To give the colouring more depth, use a few different shades of the same colour and layer them lightly. Use a darker colour for shadows.



Show us a photo on the [Kids Club Online Gallery!](#)