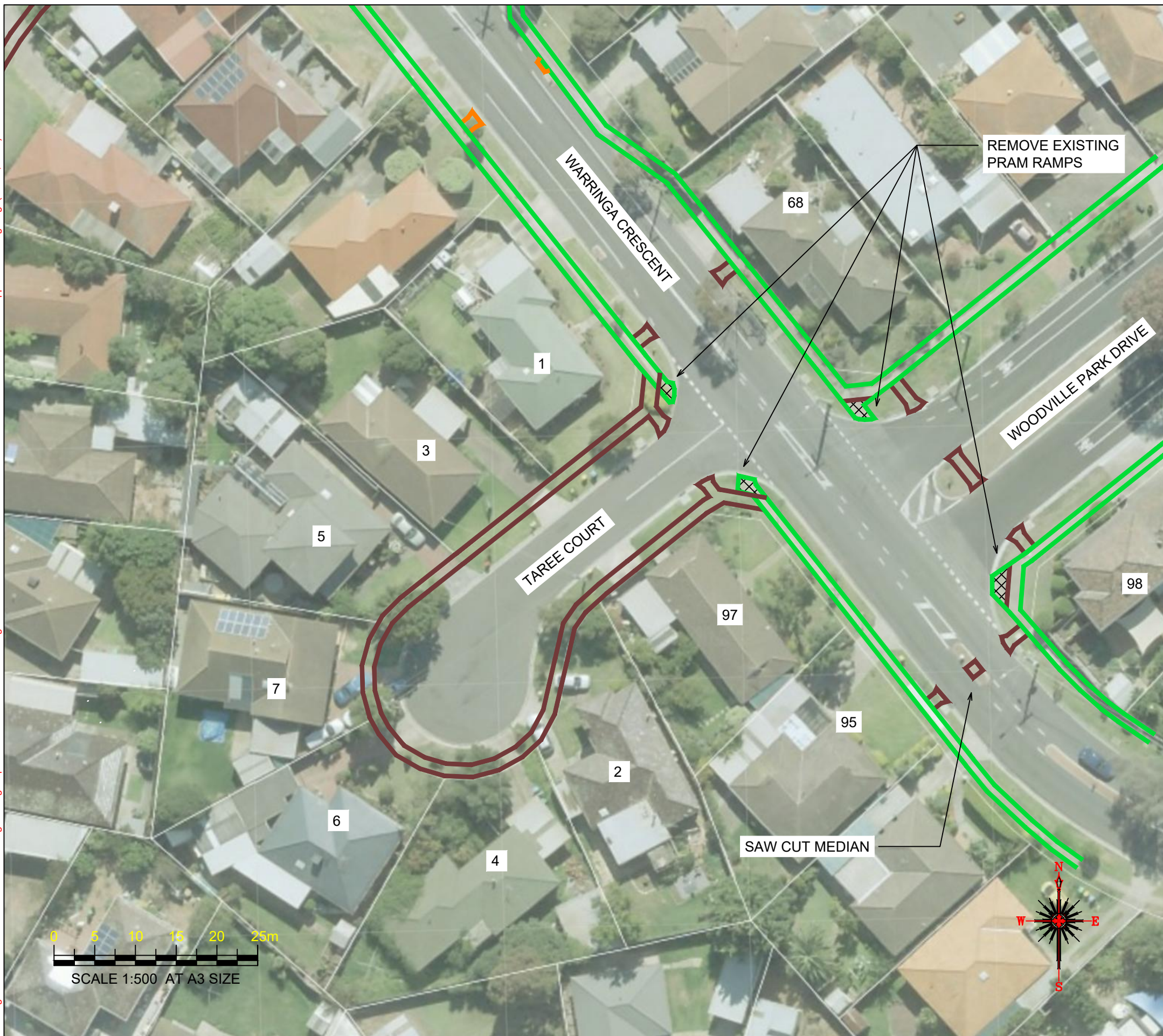


Drawing name: M:\Engineering Services\ARD - CAD - 3D\Traffic Engineering Capital Works 2020-21\Path Designs\CAD\Strathmore Crescent + Camberra Avenue\Dunbarton Avenue Hoppers Crossing.dwg (26 Jul, 2021)



WARNING
ALL SERVICES SHOWN ON THIS DRAWING ARE APPROXIMATE ONLY AND EXACT LOCATION IS TO BE CONFIRMED ON SITE BY CONTRACTOR PRIOR TO COMMENCEMENT OF ANY WORKS.



Notes

1. Construct 1.5m footpath as per WCC SD 2-1
2. Provide construction joints, expansion joints and crack control joints as per WCC SD 2-4
3. Incorporate pits as per WCC SD 2-5
4. Construct pram ramp as per WCC SD 3-1

Design

LEGEND	
	REMOVE EXISTING FOOTPATH
	PROPOSED FOOTPATH
	EXISTING FOOTPATH
	SEPARATE PROJECT PROPOSED FOOTPATH
	EXISTING TREE/VEGETATION

Rev	Amendments	By	Approved	Date
A	ISSUED FOR			

45 Princes Highway
 Werribee VIC 3030
 Australia
 Tel: (03) 9742 0777
 Fax: (03) 9741 6237

City Transport

Survey Datum:	NA
Surveyed:	NA
Designed:	D.BATTOCCHIO
Drawn:	D.BATTOCCHIO
Approved:	

Pedestrian Footpath Taree Court Preliminary Design	
Sheet No: 1 of 2	Obj No:
Drawing No: NA	Rev: A

