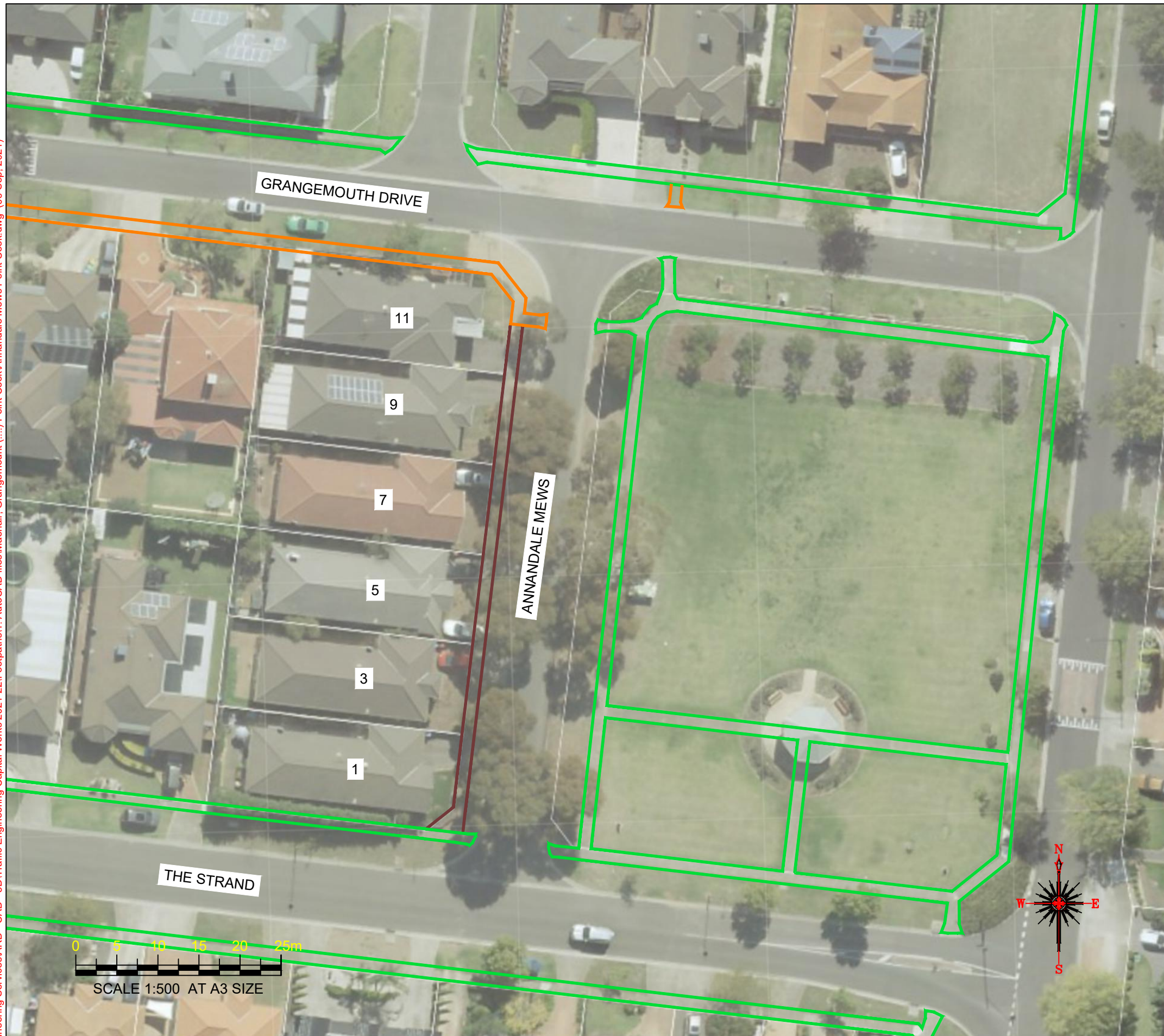
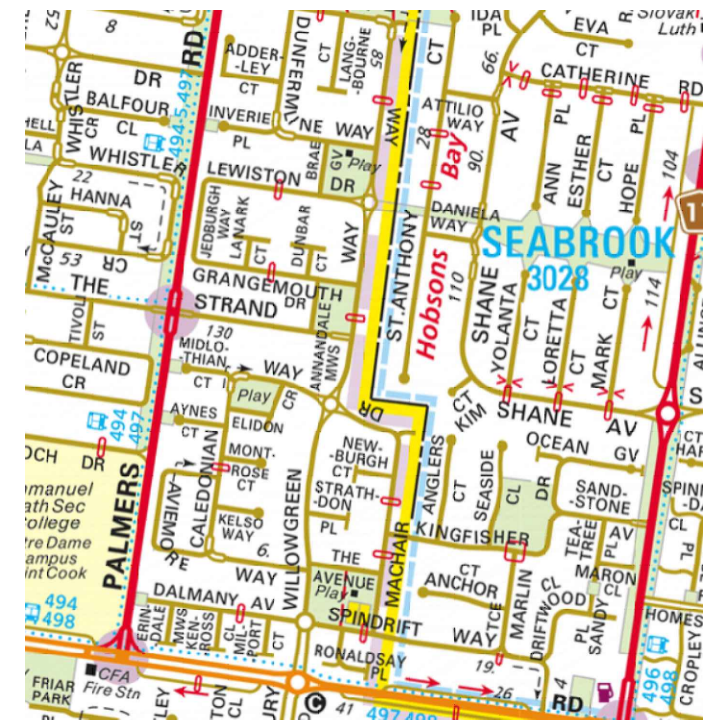


Drawing name: M:\Engineering Services\ARD - CAD - 3D\Traffic Engineering Capital Works 2021-22\Footpaths\1\_AutoCAD files\Maehair, Grangemouth (...).Point Cook\Annandale Mews Point Cook.dwg (06 Sep, 2021)








**WARNING**  
ALL SERVICES SHOWN ON THIS DRAWING ARE APPROXIMATE ONLY AND EXACT LOCATION IS TO BE CONFIRMED ON SITE BY CONTRACTOR PRIOR TO COMMENCEMENT OF ANY WORKS.



**Notes**

1. Construct 1.5m footpath as per WCC SD 2-1
2. Provide construction joints, expansion joints and crack control joints as per WCC SD 2-4
3. Incorporate pits as per WCC SD 2-5
4. Construct pram crossings as per WCC SD 3-1

**Design**

LEGEND	
	REMOVE EXISTING FOOTPATH
	PROPOSED FOOTPATH
	EXISTING FOOTPATH
	SEPARATE PROJECT PROPOSED FOOTPATH
	EXISTING TREE/VEGETATION

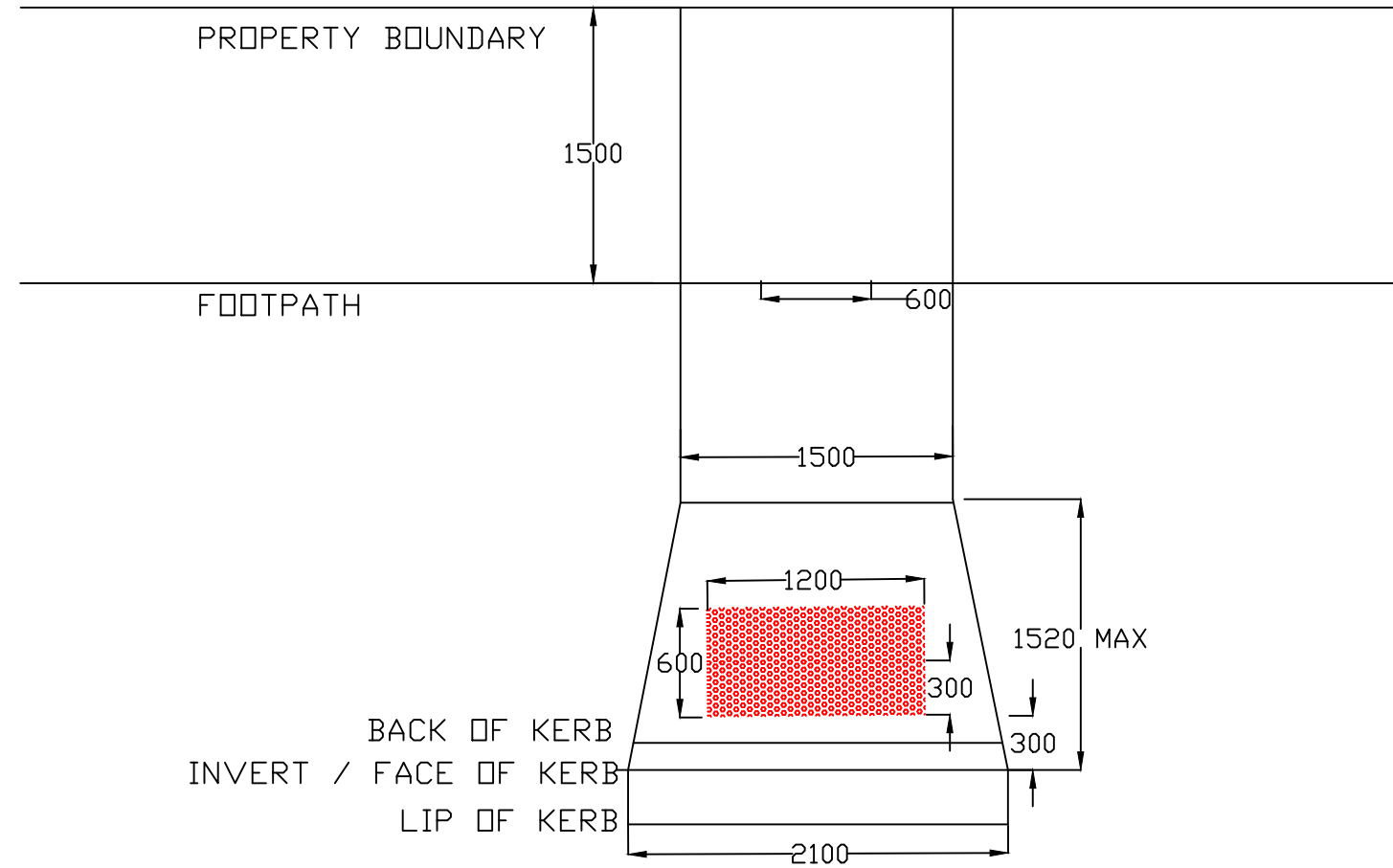
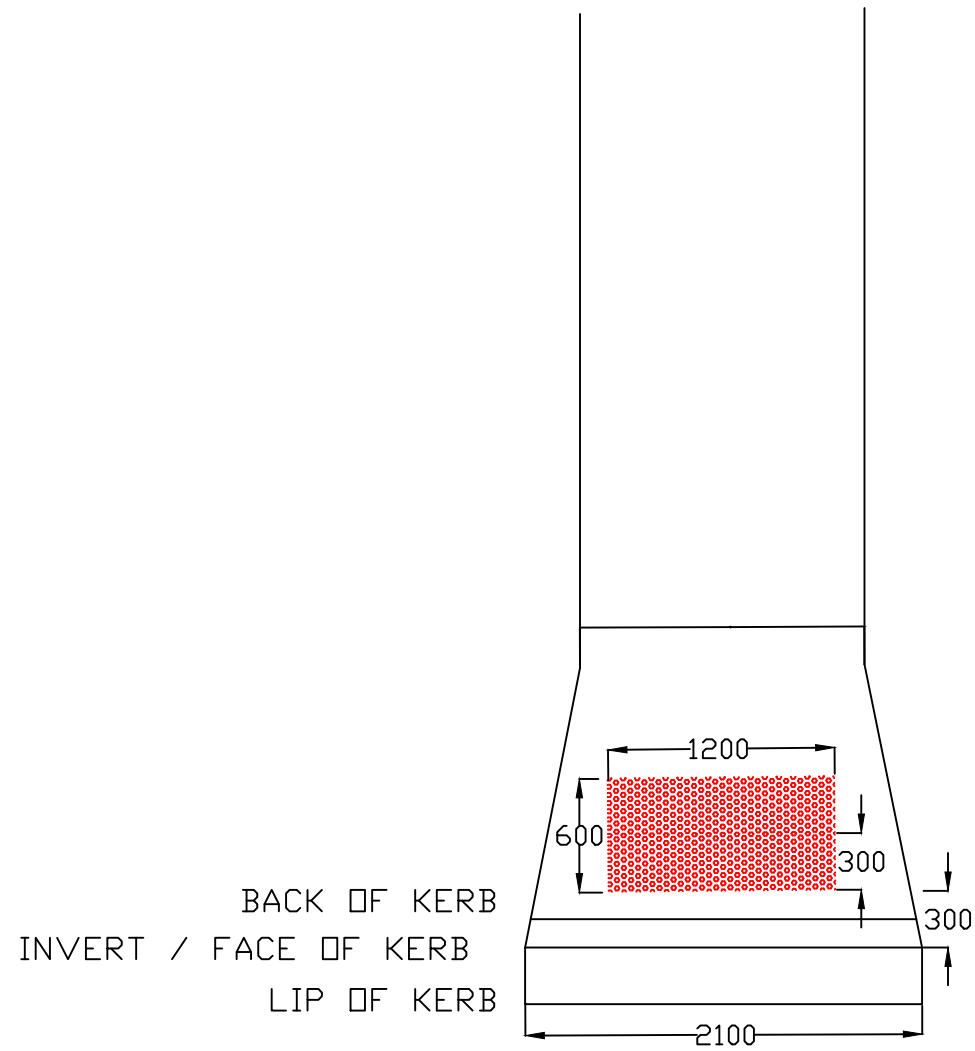
Rev	Amendments	By	Approved	Date
	Notes and amendments from arborist report added	DB		
A	ISSUED FOR			///

  
 45 Princes Highway  
 Werribee VIC 3030  
 Australia  
 Tel: (03) 9742 0777  
 Fax: (03) 9741 6237  
 City Transport


Survey Datum:	NA
Surveyed:	NA
Designed:	D.BATTOCCHIO
Drawn:	D.BATTOCCHIO
Approved:	

<b>Pedestrian Footpath Annandale Mews</b>	
<i>Preliminary Design</i>	
Sheet No: 1 of 2	Obj No:
Drawing No: NA	Rev: A

Drawing name: M:\Engineering Services\ARD - CAD - 3D\Traffic Engineering Capital Works 2021-22\Footpaths\1\_AutoCAD files\Maehair, Grangemount (...)\Point Cook\Annandale Mews Point Cook.dwg (06 Sep, 2021)



**TYPICAL METHOD FOR PRAM CROSSINGS AND TGSi INSTALLATION**

Rev	Amendments	By	Approved	Date	 45 Princes Highway Werribee VIC 3030 Australia Tel: (03) 9742 0777 Fax: (03) 9741 6237		Survey Datum: NA	Pedestrian Footpath Annandale Mews Preliminary Design	
							Surveyed: NA	Date: NA	
							Designed: D.BATTOCCHIO	Date: 06_09_2021	
							Drawn: D.BATTOCCHIO	Date: 06_09_2021	Sheet No: 2 of 2
A	ISSUED FOR			__/__/__	City Transport		Approved:	Date:	Drawing No: NA
									Obj No:
									Rev: A