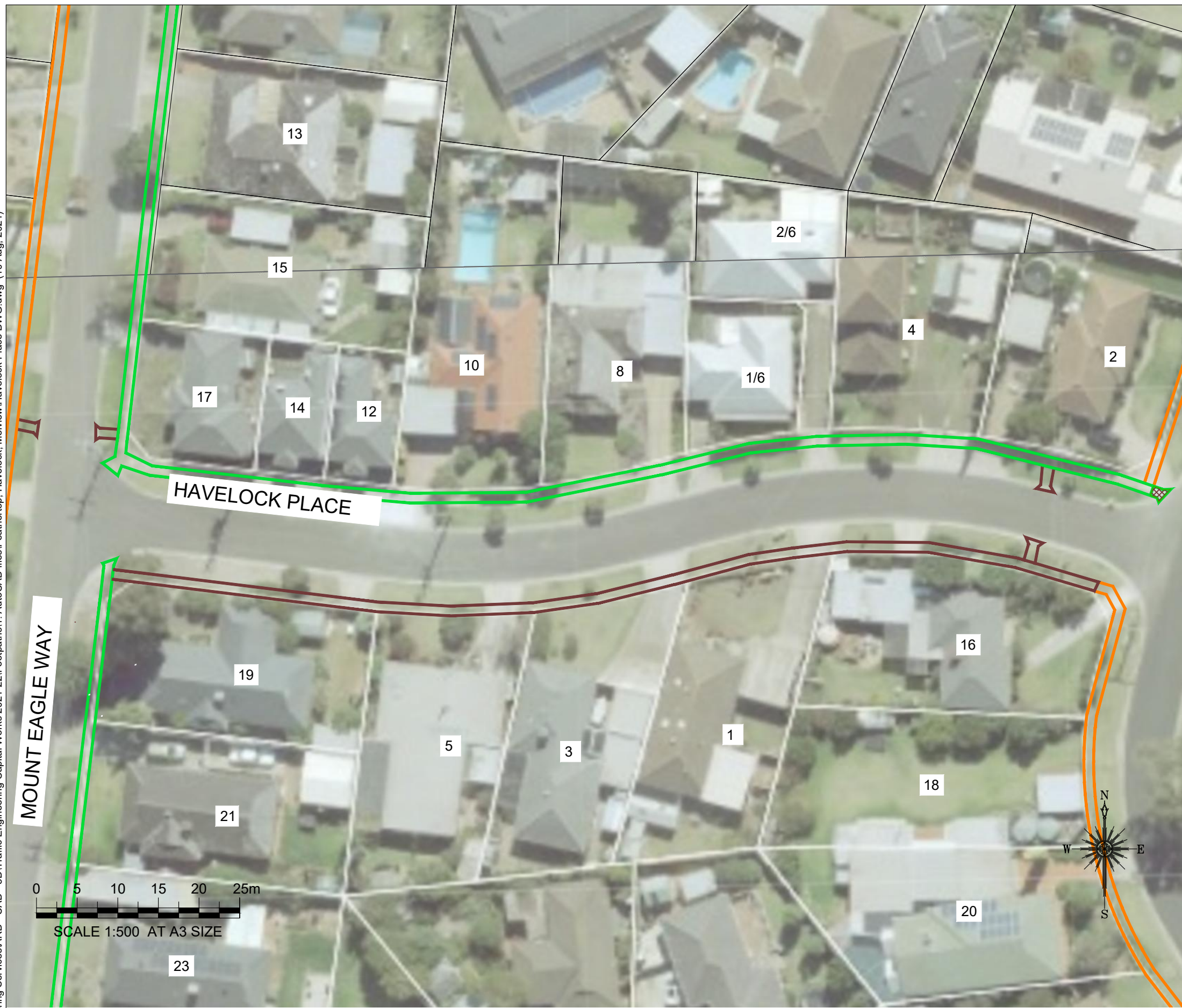
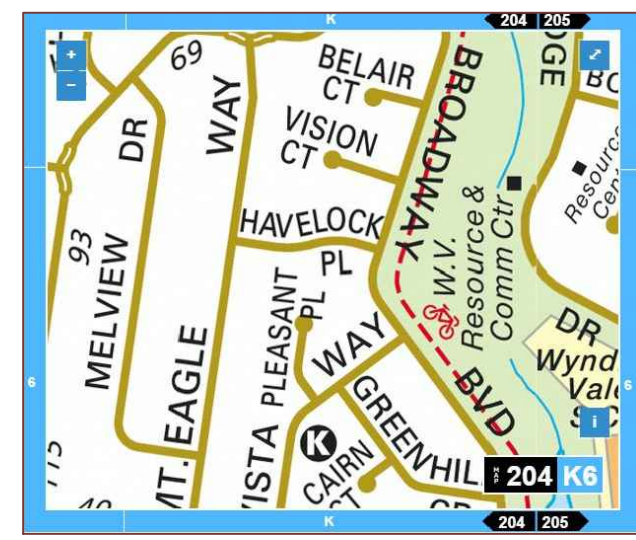


Drawing name: M:\Engineering Services\ARD - CAD - 3D\Traffic Engineering Capital Works 2021-22\Footpaths\1_AutoCAD files\Footpaths\1_Havelock_Melview\Havelock Place DWG.dwg (10 Aug. 2021)



WARNING
ALL SERVICES SHOWN ON THIS DRAWING ARE APPROXIMATE ONLY AND EXACT LOCATION IS TO BE CONFIRMED ON SITE BY CONTRACTOR PRIOR TO COMMENCEMENT OF ANY WORKS.



Notes

1. Construct 1.5m footpath as per WCC SD 2-1
2. Provide construction joints, expansion joints and crack control joints as per WCC SD 2-4
3. Incorporate pits as per WCC SD 2-5
4. Construct pram crossings as per WCC SD 3-1

Design

LEGEND	
	REMOVE EXISTING FOOTPATH
	PROPOSED FOOTPATH
	EXISTING FOOTPATH
	SEPARATE PROJECT PROPOSED FOOTPATH
	EXISTING TREE/VEGETATION

Rev	Amendments	By	Approved	Date
A	ISSUED FOR			

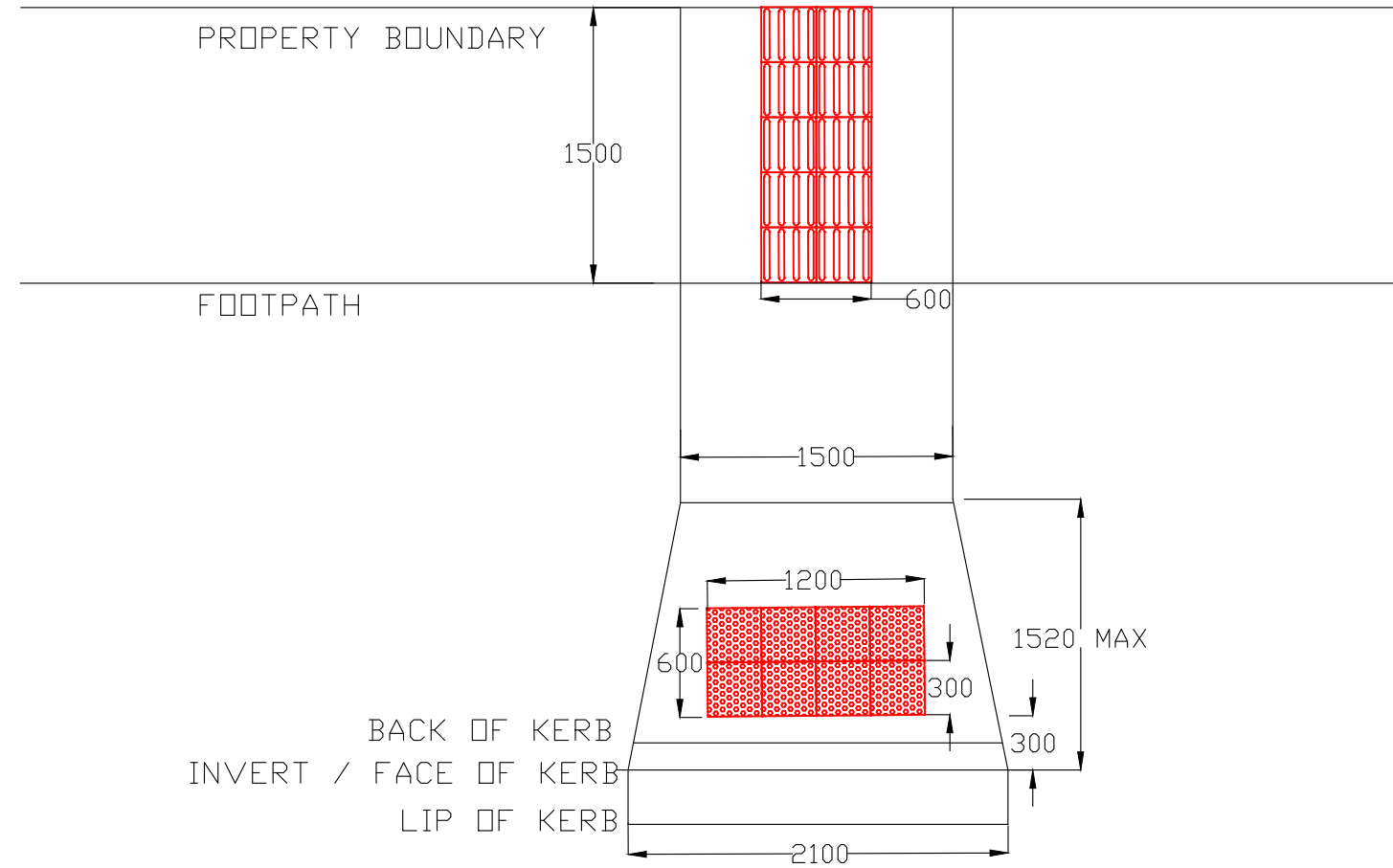
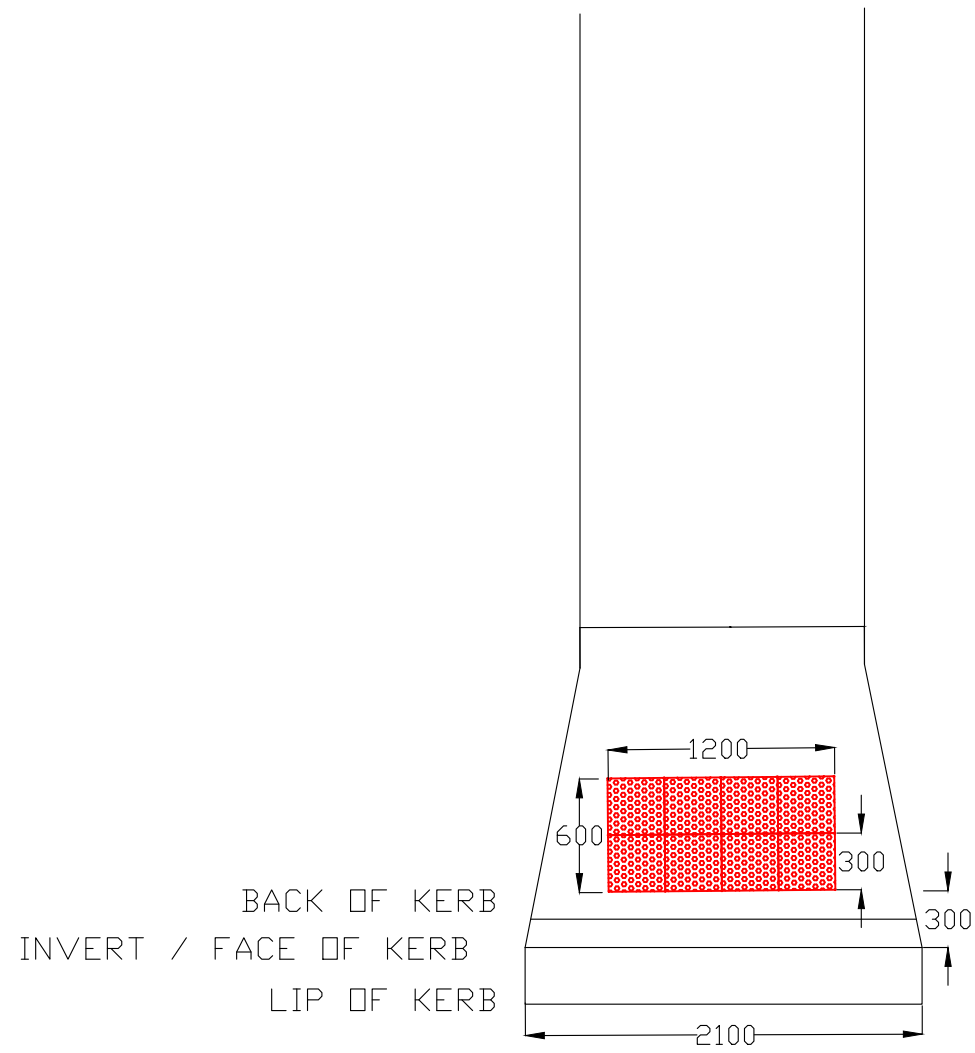
45 Princes Highway
Werribee VIC 3030
Australia
Tel: (03) 9742 0777
Fax: (03) 9741 6237

City Transport


Survey Datum: NA	Date: NA
Designed: U.PAUDEL	Date: 05_08_2021
Drawn: U.PAUDEL	Date: 05_08_2021
Approved:	Date:

Pedestrian Footpath Havelock Place Preliminary Design	
Sheet No: 1 of 2	Obj No:
Drawing No: NA	Rev: A

Drawing name: M:\Engineering Services\ARD - CAD - 3D\Traffic Engineering Capital Works 2021-22\Footpaths\1. AutoCAD files\Feathertop. Havelock. Melview\Havelock Place DWG.dwg (10 Aug. 2021)



TYPICAL METHOD FOR PRAM CROSSINGS AND TGSi INSTALLATION

Rev	Amendments	By	Approved	Date	45 Princes Highway Werribee VIC 3030 Australia Tel: (03) 9742 0777 Fax: (03) 9741 6237		Survey Datum: NA	Pedestrian Footpath Havelock Place Preliminary Design	
					 wyndhamcity <i>city.coast.country</i>	Surveyed: NA	Date: NA		
						Designed: U.PAUDEL	Date: 05_08_2021		
					Drawn: U.PAUDEL	Date: 05_08_2021	Sheet No: 2 of 2		Obj No:
A	ISSUED FOR			__/__/__	City Transport	Approved:	Date:	Drawing No: NA	Rev: A