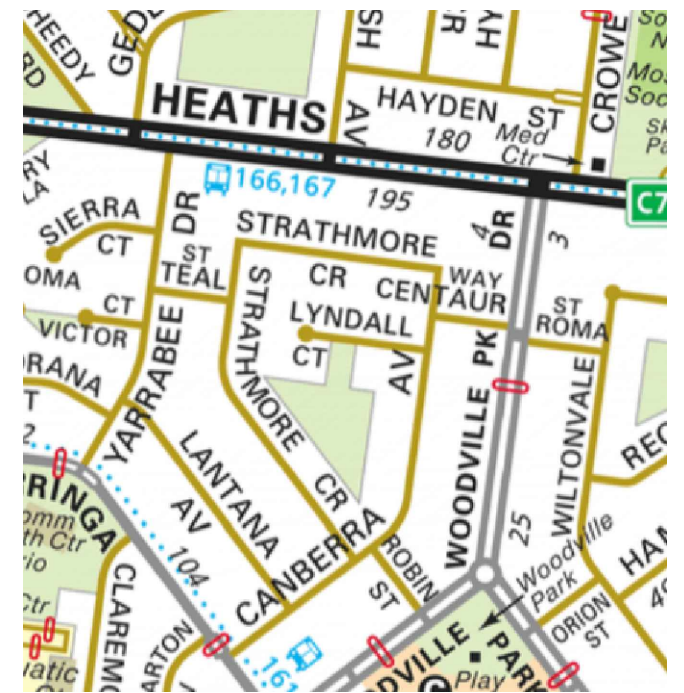


Drawing name: M:\Engineering Services\ARD - CAD - 3D\Traffic Engineering Capital Works 2021-22\Footpaths1 - AutoCAD files\Yarrabee, Sierra, Victor, Paloma, Drury, Lantana, Torana - Hoppers Crossing\Lantana Ave Hoppers Crossing.dwg (21 Jul, 2021)



WARNING
ALL SERVICES SHOWN ON THIS DRAWING ARE APPROXIMATE ONLY AND EXACT LOCATION IS TO BE CONFIRMED ON SITE BY CONTRACTOR PRIOR TO COMMENCEMENT OF ANY WORKS.



Notes

1. Construct 1.5m footpath as per WCC SD 2-1
2. Provide construction joints, expansion joints and crack control joints as per WCC SD 2-4
3. Incorporate pits as per WCC SD 2-5
4. Construct pram ramp as per WCC SD 3-1

Design

LEGEND	
	REMOVE EXISTING FOOTPATH
	PROPOSED FOOTPATH
	EXISTING FOOTPATH
	SEPARATE PROJECT PROPOSED FOOTPATH
	EXISTING TREE/VEGETATION

Continued on sheet 2

Rev	Amendments	By	Approved	Date
A	ISSUED FOR			



45 Princes Highway
Werrbee VIC 3030
Australia
Tel: (03) 9742 0777
Fax: (03) 9741 6237

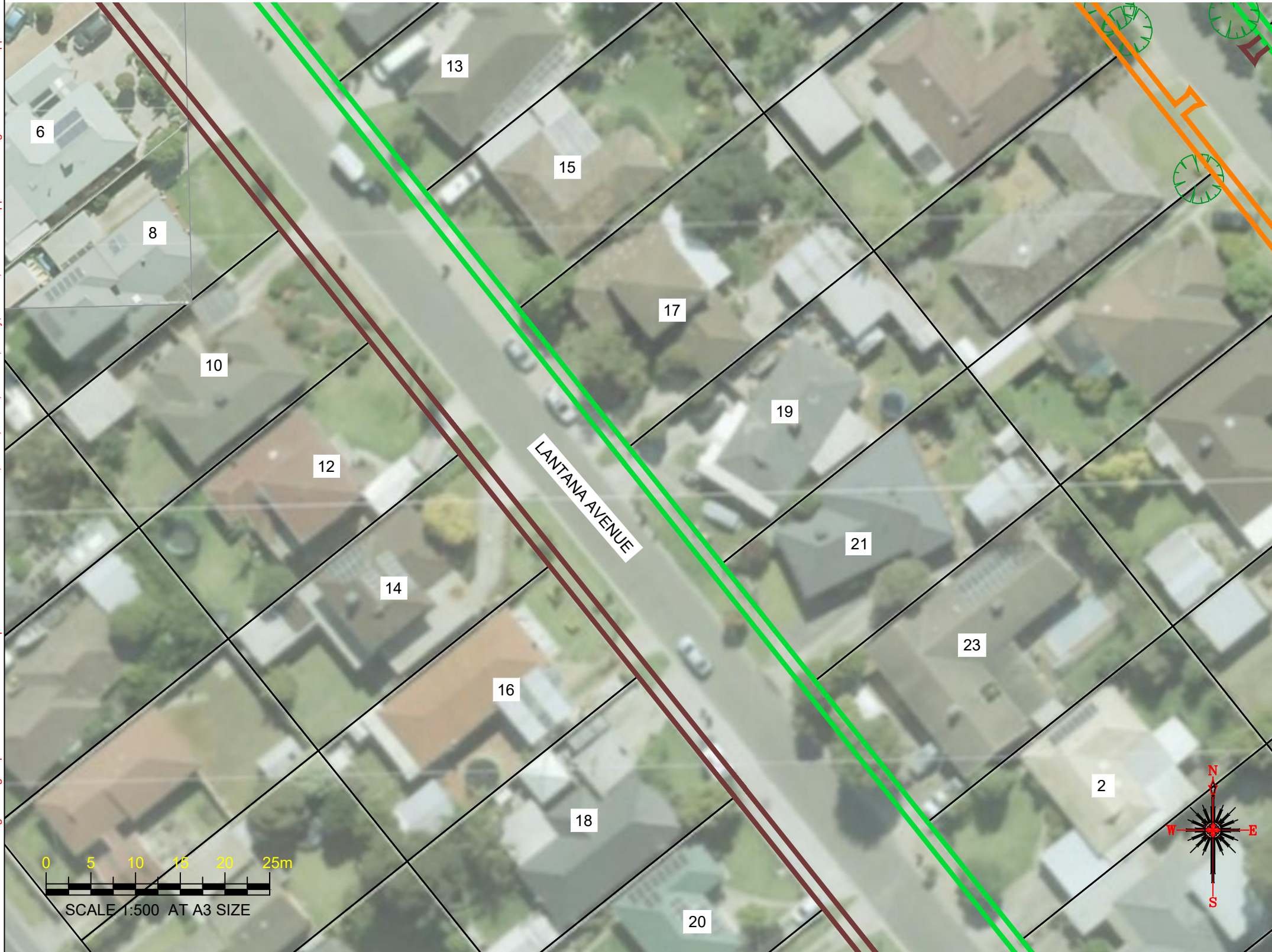
City Transport

Survey Datum:	NA
Surveyed:	NA
Designed:	D.BATTOCCHIO
Drawn:	D.BATTOCCHIO
Approved:	

Pedestrian Footpath Lantana Avenue	
<i>Preliminary Design</i>	
Sheet No: 1 of 3	Obj No:
Drawing No: NA	Rev: A

Drawing name: M:\Engineering Services\ARD - CAD - 3D\Traffic Engineering Capital Works 2021-22\Footpaths1 - AutoCAD files\Yarrabee, Sierra, Victor, Paloma, Drury, Lantana, Torana - Hoppers Crossing\Lantana Ave Hoppers Crossing.dwg (21 Jul, 2021)

Continued on sheet 1



Continued on sheet 3



WARNING
ALL SERVICES SHOWN ON THIS DRAWING ARE APPROXIMATE ONLY AND EXACT LOCATION IS TO BE CONFIRMED ON SITE BY CONTRACTOR PRIOR TO COMMENCEMENT OF ANY WORKS.

Notes

1. Construct 1.5m footpath as per WCC SD 2-1
2. Provide construction joints, expansion joints and crack control joints as per WCC SD 2-4
3. Incorporate pits as per WCC SD 2-5
4. Construct pram ramp as per WCC SD 3-1

Design

LEGEND	
	REMOVE EXISTING FOOTPATH
	PROPOSED FOOTPATH
	EXISTING FOOTPATH
	SEPARATE PROJECT PROPOSED FOOTPATH
	EXISTING TREE/VEGETATION

Rev	Amendments	By	Approved	Date
A	ISSUED FOR			



45 Princes Highway
Werribee VIC 3030
Australia
Tel: (03) 9742 0777
Fax: (03) 9741 6237

City Transport

Survey Datum: NA	
Surveyed: NA	Date: NA
Designed: D.BATTOCCHIO	Date: 21_07_2021
Drawn: D.BATTOCCHIO	Date: 21_07_2021
Approved:	Date:

**Pedestrian Footpath
Lantana Avenue**
Preliminary Design

Sheet No: 2 of 3

Obj No:

Drawing No: **NA**

Rev: **A**

Drawing name: M:\Engineering Services\ARD - CAD - 3D\Traffic Engineering Capital Works 2021-22\Footpaths1. AutoCAD files\Yarrabee, Sierra, Victor, Paloma, Drury, Lantana, Torana - Hoppers Crossing\Lantana Ave Hoppers Crossing.dwg (21 Jul, 2021)

Continued on sheet 2



WARNING
ALL SERVICES SHOWN ON THIS DRAWING ARE APPROXIMATE ONLY AND EXACT LOCATION IS TO BE CONFIRMED ON SITE BY CONTRACTOR PRIOR TO COMMENCEMENT OF ANY WORKS.

Notes

1. Construct 1.5m footpath as per WCC SD 2-1
2. Provide construction joints, expansion joints and crack control joints as per WCC SD 2-4
3. Incorporate pits as per WCC SD 2-5



Design

LEGEND

	REMOVE EXISTING FOOTPATH
	PROPOSED FOOTPATH
	EXISTING FOOTPATH
	SEPARATE PROJECT PROPOSED FOOTPATH
	EXISTING TREE/VEGETATION

Rev	Amendments	By	Approved	Date
A	ISSUED FOR			

45 Princes Highway
Werribee VIC 3030
Australia
Tel: (03) 9742 0777
Fax: (03) 9741 6237

City Transport

Survey Datum: NA
 Surveyed: NA Date: NA
 Designed: D.BATTOCCHIO Date: 21_07_2021
 Drawn: D.BATTOCCHIO Date: 21_07_2021
 Approved: Date:

**Pedestrian Footpath
Lantana Avenue**
Preliminary Design

Sheet No: 3 of 3

Obj No:

Drawing No: NA

Rev: A