

SLOW SHUTTER SPEED PHOTOGRAPHY



Slow shutter photography is where you manually change your camera's shutter speed to a slower rate so it takes longer to take a photo. This is a great technique to try at night time because when you take photos of street lights or car lights when it is dark using a slow shutter speed the lights in the photo go blurry and leave a light trail. Have a look at the photos here to see what I mean.

If you have a camera at home, have a play around with the manual setting to change the shutter speed. You may need to look up your camera model online to find out how to do this. Don't have a camera? No problem! There are free apps that you can download on your phone or device so you can take these types of photos if you don't have a camera.

Take a photo for the [Kids Club Online Gallery!](#)

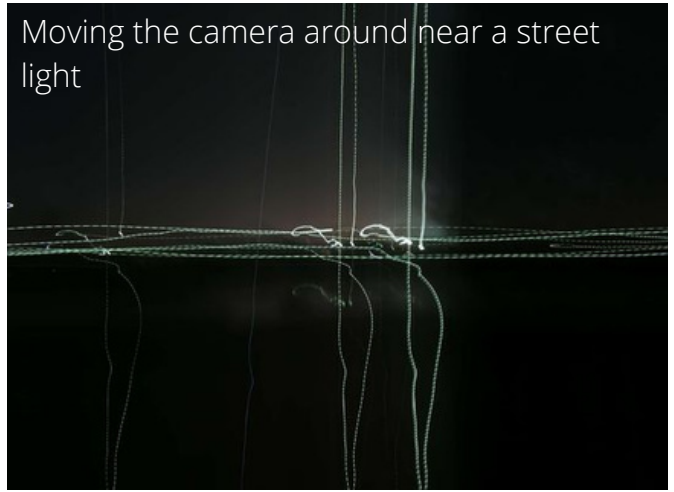
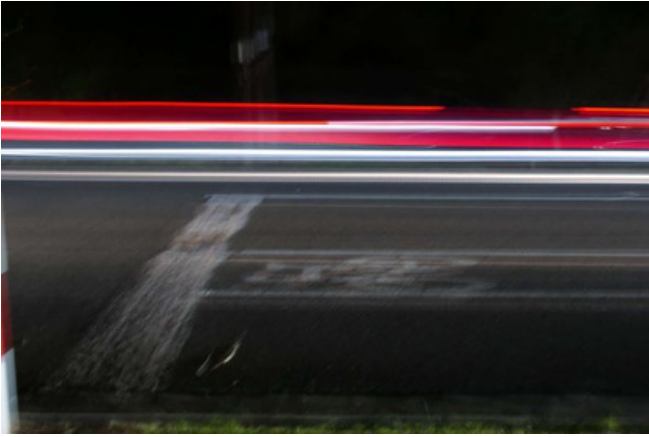


Light Painting.

Light painting is a fun technique to try using slow shutter speeds! You will need a helper and a dark room or go outside at night. One person holds the camera and takes the photo, the other draws something using a light source. So you can stand away from the camera and draw a pattern in the air with a torch light. The camera will see the light but not you since it is dark.



These photos were taken using a slow shutter speed on a digital camera. The lights are from a car driving down a road at night.



This is a light trail from a plane



These photo were taken using a mobile phone with an app.

This is a post near a school crossing. I took a photo while slowly moving my phone

