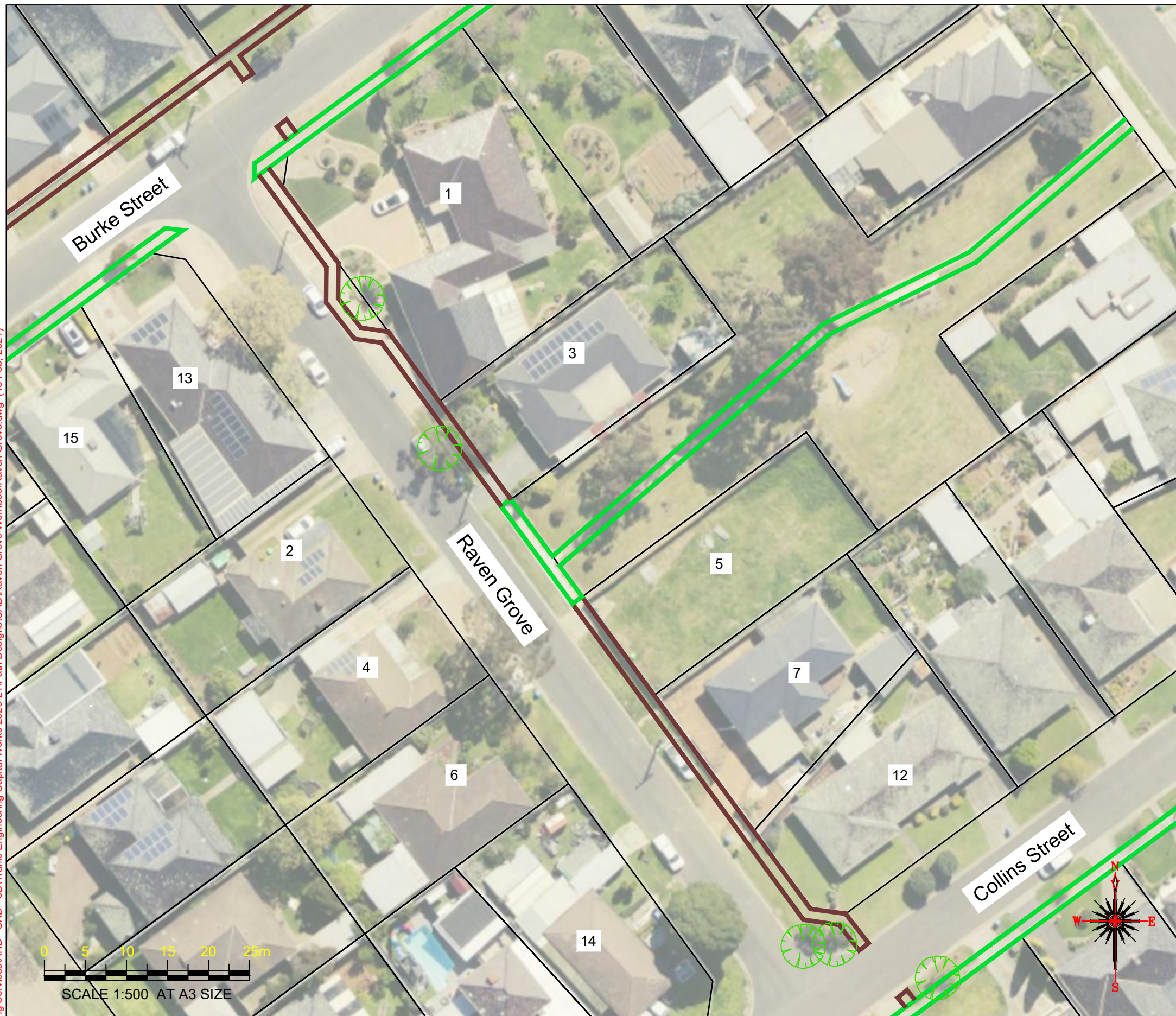
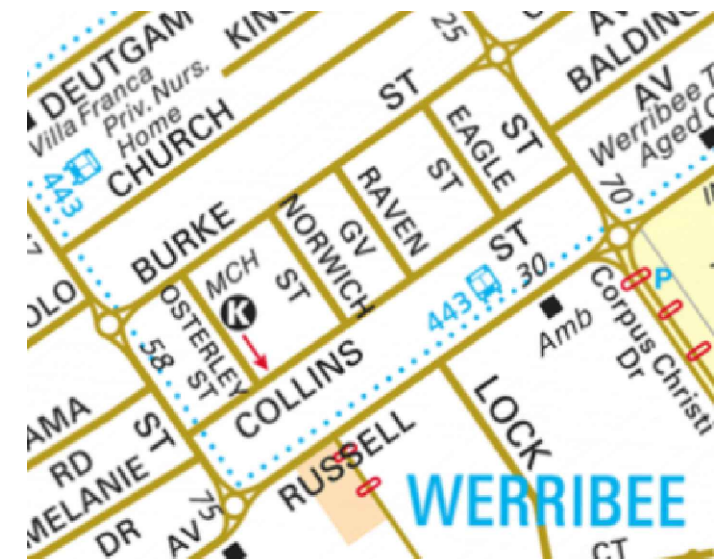


Drawing name: M:\Engineering Services\ARD - CAD - 3D\Traffic Engineering Capital Works 2020-21\Path Designs\CAD\Raven Grove Werribee\Raven Grove.dwg (18 Feb. 2021)



WARNING
ALL SERVICES SHOWN ON THIS DRAWING ARE APPROXIMATE ONLY AND EXACT LOCATION IS TO BE CONFIRMED ON SITE BY CONTRACTOR PRIOR TO COMMENCEMENT OF ANY WORKS.



Notes

1. Construct 1.5m footpath as per WCC SD 2-1
2. Provide construction joints, expansion joints and crack control joints as per WCC SD 2-4
3. Incorporate pits as per WCC SD 2-5
4. Construct pram crossings as per WCC SD 3-1
5. Connect new footpath to existing reserve footpath on Raven Grove
6. Pram crossing on Burke Street may be constructed in separate project*
7. Construct Pram crossing to existing footpath on Collins street
8. Construct footpath around tree and landscaping at 1 Raven Grove

Design

LEGEND	
	PROPOSED FOOTPATH
	EXISTING FOOTPATH
	EXISTING TREE/VEGETATION

Rev	Amendments	By	Approved	Date
A	ISSUED FOR			

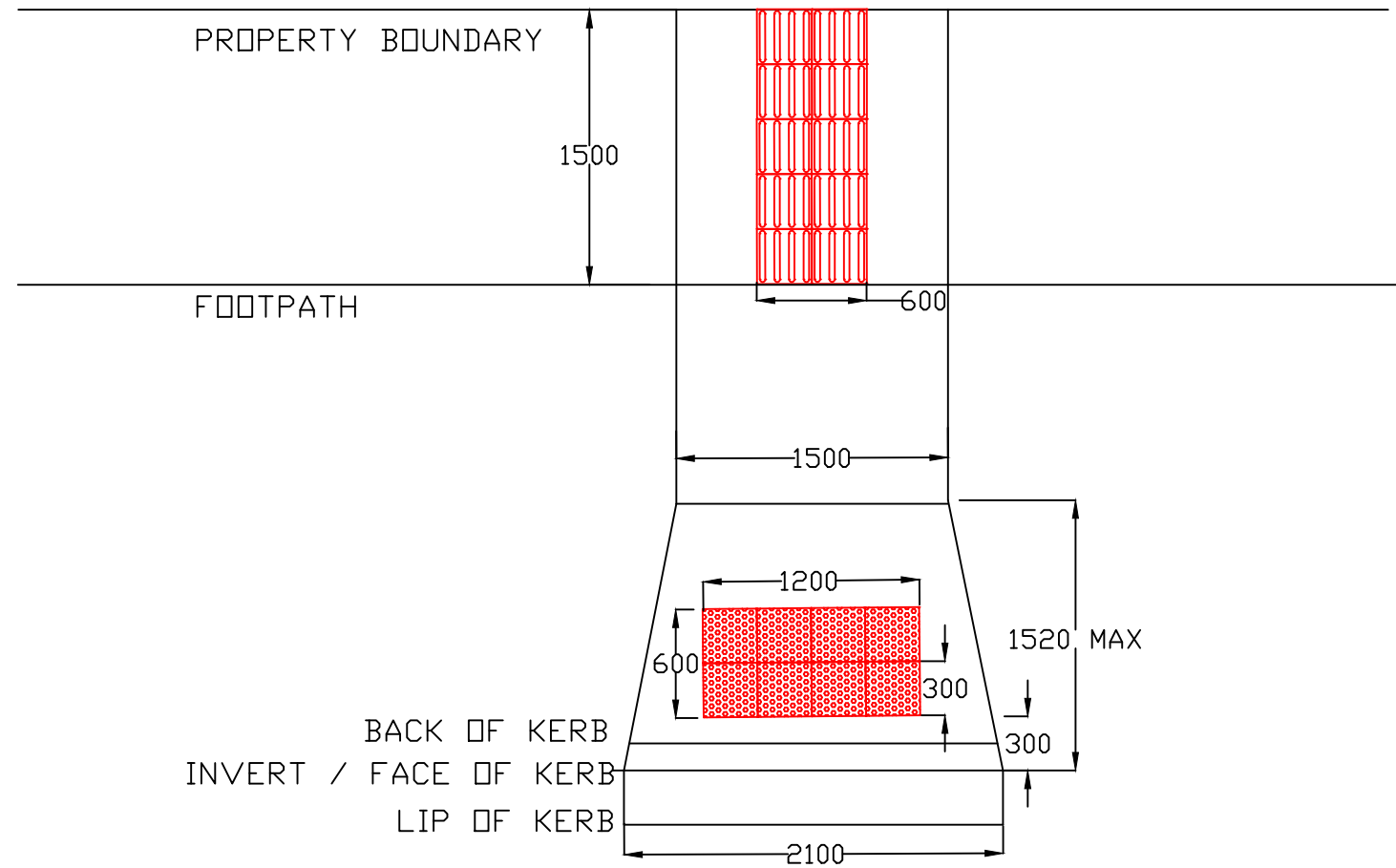
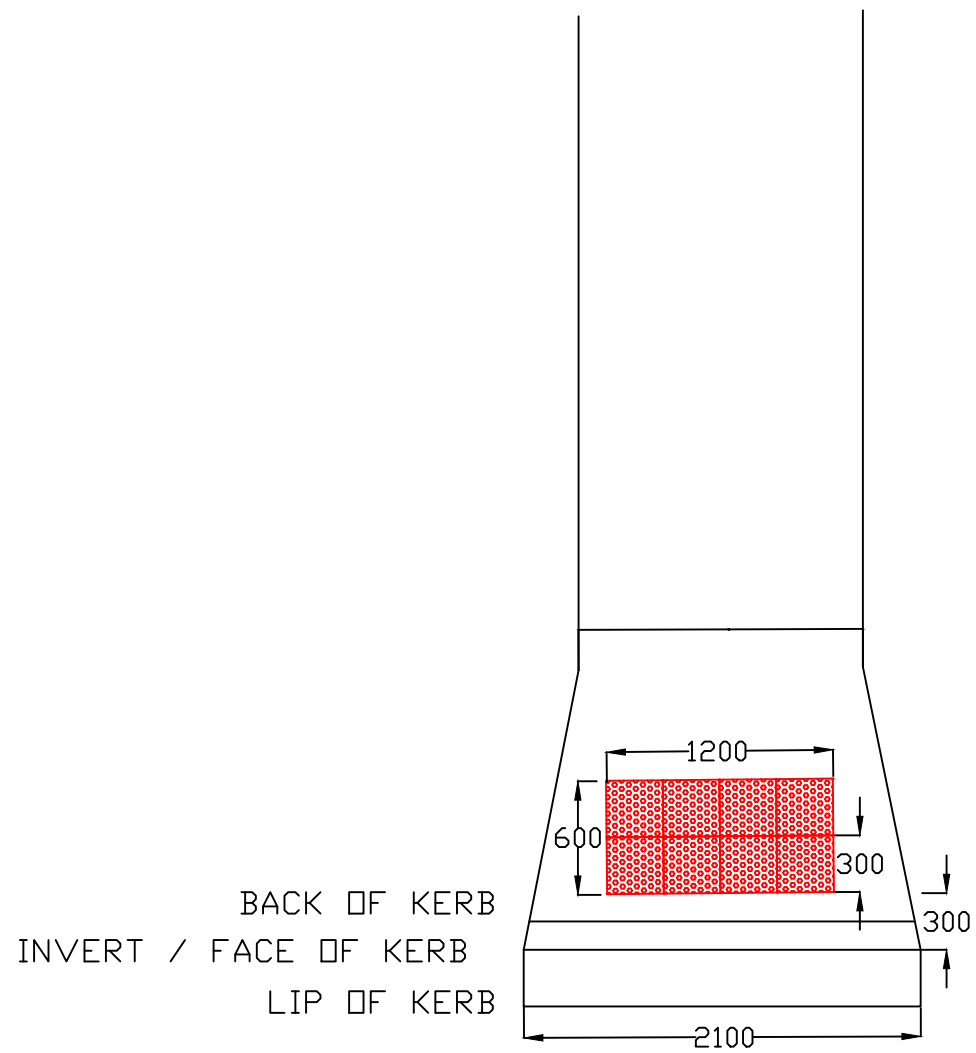
45 Princes Highway
 Werribee VIC 3030
 Australia
 Tel: (03) 9742 0777
 Fax: (03) 9741 6237

City Transport

Survey Datum: NA	Date: NA
Designed: D.BATTOCCHIO	Date: 18_01_2021
Drawn: D.BATTOCCHIO	Date: 18_01_2021
Approved:	Date:

Pedestrian Footpath Raven Grove	
Preliminary Design	
Sheet No: 1 of 2	Obj No:
Drawing No: NA	Rev: A

Drawing name: M:\Engineering Services\ARD - CAD - 3D\Traffic Engineering Capital Works 2020-2\1\Path Designs\CAD\Raven Grove Werribee\Raven Grove.dwg (18 Feb, 2021)



TYPICAL METHOD FOR PRAM CROSSINGS AND TGSI INSTALLATION

Rev	Amendments	By	Approved	Date	45 Princes Highway Werribee VIC 3030 Australia Tel: (03) 9742 0777 Fax: (03) 9741 6237		Survey Datum: NA	Pedestrian Footpath Raven Grove Preliminary Design	
					 City Transport	45 Princes Highway Werribee VIC 3030 Australia Tel: (03) 9742 0777 Fax: (03) 9741 6237	Surveyed: NA	Date: NA	Sheet No: 2 of 2 Obj No:
							Designed: D.BATTOCCHIO	Date: 18_01_2021	
							Drawn: D.BATTOCCHIO	Date: 18_01_2021	Drawing No: NA Rev: A
A	ISSUED FOR			11/11			Approved:	Date:	