

wyndhamcity  
city.coast.country

FREE WYNDHAM CITY EVENT



# STATE & GARDEN ROSE SHOW

**NOVEMBER  
11-12 2017**

**EVENT  
PROGRAM**

VICTORIA STATE ROSE GARDEN  
WERRIBEE PARK | 10AM - 4PM

[www.stateroseandgardenshow.com.au](http://www.stateroseandgardenshow.com.au)



- **HONESTY**
- **INTEGRITY**
- **PROFESSIONALISM**

1 Werribee Street, Werribee **9741 7777**



## YOUR ROSE & GARDEN EXPERTS!

If you love quality, service with a smile and a total 'rose experience' with advice about how to grow the most beautiful roses in your garden using an organic management program, take a closer look at our website – sign up at [rosesalesonline.com.au](http://rosesalesonline.com.au) to receive our Rose Rambler newsletter for regular information about everything there is to know '*All About Roses*'.

Roses purchased from Silkies Rose Farm cannot be surpassed for **QUALITY & VALUE** because Silkies Rose Farm offers a 100% guarantee within three months of purchase.

**SILKIES ROSE FARM** | 550 Cnr Spur & McDonalds Rds  
Clonbinane VIC 3658

Call us  
(03) 5787 1123

 [rosesalesonline.com.au](http://rosesalesonline.com.au)  
[giftroses.com.au](http://giftroses.com.au)

## WHAT'S ON... ALL GREEN NURSERY DEMONSTRATION STAGE

### SATURDAY 11 NOVEMBER

- 10.30am **Welcome to Country**  
by Wangal United
- 10.50am **Official Event Opening**  
Remembrance Day Observance
- 11.05am **Victoria State Rose Garden**  
Supporters
- 12.00pm **The Gardenettes**  
Summer gardening projects
- 1.00pm **Vasili**  
How to build a no dig garden  
Different ways to compost
- 2.00pm **Attila Kapitany**  
Succulents and bottle trees
- 3.00pm **Jane Edmanson and**  
**Clive Larkman**  
Food and flora
- 3.30pm **Diana Sargeant and**  
**Jane Edmanson**  
Talking roses

### SUNDAY 12 NOVEMBER

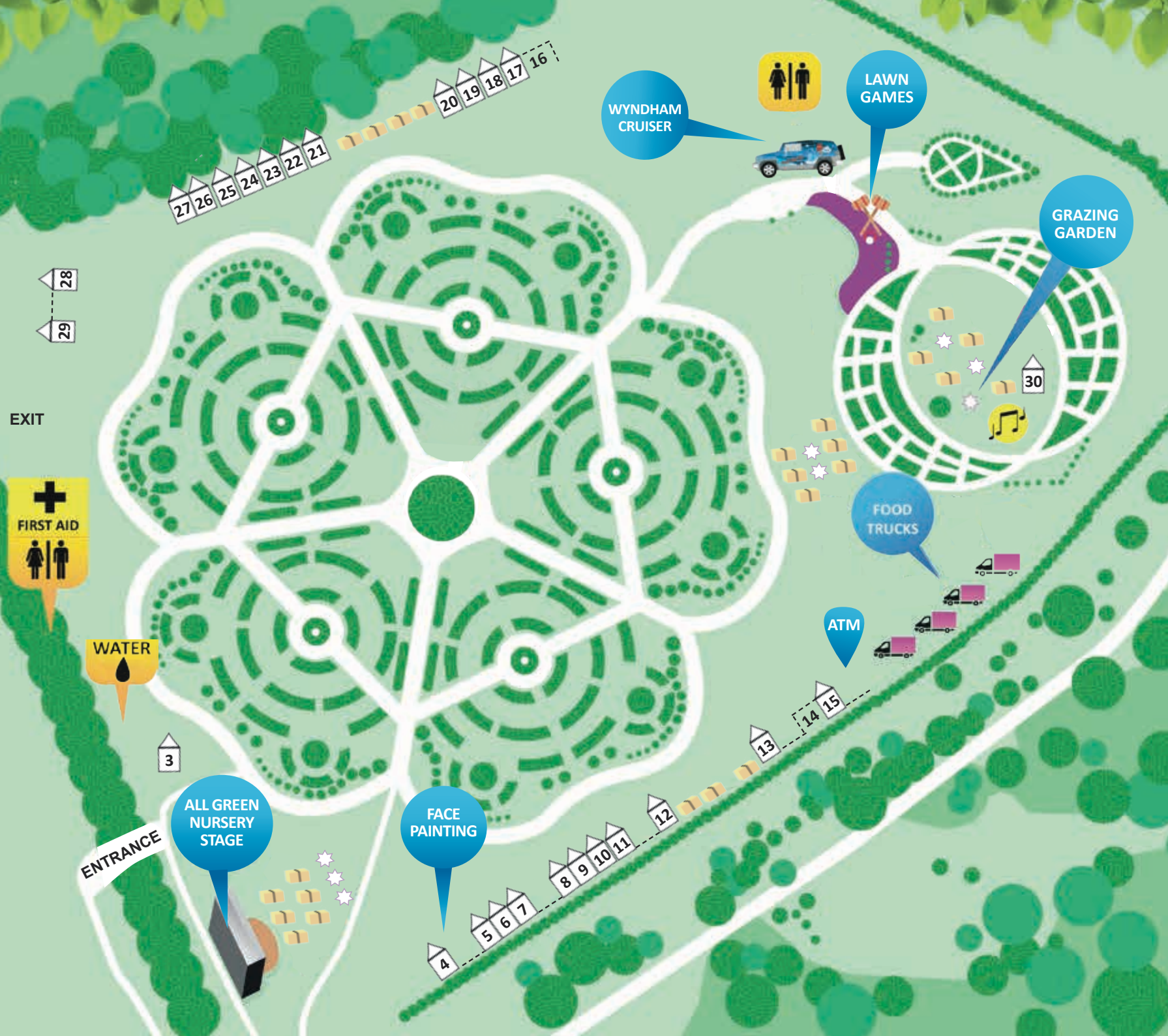
- 11.00am **Victoria State Rose Garden**  
Volunteers
- 12.00pm **Jane Edmanson**  
Phantasmagorical plants  
Get a little dirt on your hands
- 1.00pm **Vasili**  
Growing fruit trees in small  
spaces  
Creating edible gardens
- 2.00pm **Melissa King**  
Spring gardening projects
- 3.00pm **Attila Kapitany**  
Succulents, roses and bulbs

## Victoria State Rose Garden Tours:

Come and enjoy a guided tour of the Victoria State Rose Garden hosted by one of the Victoria State Rose Garden supporters who know the garden best!

**Tour times: 11am 12pm 1pm 2pm 3pm**

Please be sure to arrive at the Victoria State Rose Garden Supporters marquee  
15mins before each tour - Site 6



**EXHIBITORS:**

- 3 Wyndham City Information
- 4 YPA Wyndham City  
Live Heroic Rose Painting (Saturday Only)
- 5 All Green Nursery & Garden Supplies
- 6 Victoria State Rose Garden Supporters
- 7 Silkies Rose Farm – rosesalesonline
- 8 Aussie Gutter Protection
- 9 Gardening 4 Kids
- 10 Parks Victoria
- 11 Secret Rose Garden
- 12 Gift Givers Gallery
- 13 Di's Delightful Plants
- 14 Whirly
- 15 Werribee Visitor Information Centre
- 16 Newstead Rose Nursery
- 17 Brazilian Fashion Hub
- 18 Grow Heirloom
- 19 Werribee Men's Shed
- 20 The Greenpower Company
- 21 Succulents and Bottle Trees
- 22 Werribee Park Heritage Orchard
- 23 Mansfield Tools
- 24 Triffid Park
- 25 Beatrice Flora
- 26 PartyLite
- 27 Fair Dinkum Fertilizers
- 28 Callas and Hippeastrum
- 29 Green Living in Wyndham
- 30 Taltarni

**FOOD TRUCKS:**

- Billy Van Creamy
- Little Box Brownie
- Salt and Pepa
- Señor Churro
- Von Crumb
- Honey Dee (Saturday Only)

- ★ Umbrellas
- 🌾 Seating (Hay bales / picnic tables)

# Fruit and vegetable scraps want in on the compost party.



Welcome these newcomers into your Green Waste Bin!

[www.wyndham.vic.gov.au/recycleright](http://www.wyndham.vic.gov.au/recycleright)



## HISTORY OF THE VICTORIA STATE ROSE GARDEN

The rose has figured strongly in the history of Werribee Park and it is fitting that Australia's first State Rose Garden should find a home there. When the brothers Thomas and Andrew Chirnside developed the original mansion gardens, they planted a rose garden around the parterre.

The development of the Victoria State Rose Garden followed an approach by Jim Priestly, the Honorary Secretary of the National Rose Society of Australia in 1976, to the then Premier of Victoria. An investigation into the establishment of a State Rose Garden was authorised as a special project of the 'Garden State' concept.

By 1979, the Public Works Department had viewed a number of proposed sites in Victoria and recommended that the State Rose Garden be constructed at Werribee Park, on land already owned by the State. In 1980, a working party was set up to determine budget requirements for the development of the Garden and a design team was nominated. The original concept was that of Jim Priestly.

Construction commenced in 1982. The garden was designed by Mervyn Hayman-Danker, architect and urban designer. The Victoria State Rose Garden was opened to the public in November 1986.

In 1997, the Heritage Rose Border was commenced along the eastern fence of the Garden. In 2000 the Border was extended, bringing the number of 'old rose' varieties featured to approximately 250.

To celebrate the Federation of Australian States in the year 2000, a Leaf of Australian bred roses was commenced. The next project was a collection of English roses bred by David Austin from the UK. This enclosed garden was built in the shape of a rose 'bud'.

In 2003, the VSRG was awarded the International Garden of Excellence by the World Federation of Rose Societies. This was the first rose garden outside Europe to receive this award and the only one at that time, cared for by volunteers.

The Victoria State Rose Garden Supporters (VSRGS) Inc. evolved from a plea to the public for assistance in the care of the roses. In the early 1990's without finance to maintain the garden, the area was going to revert to pasture. Now 20 years after the first group of volunteers arrived, there is a strong and committed group responsible for the ordering, planting, staking and tying, deadheading and winter pruning of the plants. Since 1993, the supporters have also initiated special projects, including the production of leaflets, booklets and floral displays to promote the Garden and to inform and welcome new visitors.

In 2012 the supporters planned and organised the erection of a new formal entry arch to define the garden entrance. This impressive structure has improved access to the garden and provided a focal point for visitors to the garden.

**NEW VOLUNTEERS ARE WELCOME**  
Contact: [info@vicstaterosegarden.com.au](mailto:info@vicstaterosegarden.com.au)

# ALL GREEN NURSERY DEMONSTRATION STAGE



## **The Gardenettes – 12.00pm Saturday**

Melbourne based, but broadcasting to the world thanks to the wonders of the net! The Gardenettes is a new concept in lifestyle viewing – completely online, the show is short, sharp and on-trend. Melissa King and Chloe Thomson have both been around the gardening block a few times, having appeared on some of Australia's biggest gardening and lifestyle shows. Retro-tinged, yet with a modern edge, The Gardenettes is full of nan-approved gardening advice and simple recipes that can be whipped up in a jiffy!



## **Vasili – 1.00pm Saturday and Sunday**

Vasili is an expert horticulturalist who loves gardening and eating fresh produce. Inspired by the everyday gardeners he visits, he continues to share his knowledge of gardening the natural way through his TV show Vasili's Garden on Channel 7Two and radio spots on 3AW.



## **Attila Kapitany – 2.00pm Saturday and 3.00pm Sunday**

Attila is well known for his passion for cacti and succulents! He is the immediate past president of the Cactus & Succulent Society of Australia with 10 years in this position. He has over thirty five years experience growing and enthusiastically marketing cacti and succulents. Attila has co-written seven books with Rudolf Schulz about succulents, with an eighth book a solo effort on Australian native species. His newest publications are a series of eight booklets on xerophytic Australian plants.



## **Jane Edmanson OAM – 3:00pm Saturday and 12.00pm Sunday**

Jane has been a Victorian presenter with Gardening Australia, ABC Television's national gardening program since its inception over 28 years ago. Jane loves gardening and the Australian bush and is Patron of the Royal Horticultural Society Victoria, Melton Botanic Gardens and The Gardens of Austin Health. Jane has written a number of books and leads garden tours with lovely people each year in Australia and overseas.



## **Clive Larkman – 3.00pm Saturday**

Clive Larkman has been working in the nursery industry since 1989, building his family's nursery into a major propagation nursery and producer of edible plants for the sector. Clive writes for a number of trade journals and is a regular on 3AW, as well as running his own food festival, the Herb and Chilli Festival.



## **Diana Sargeant – 3:30pm Saturday**

Diana Sargeant has been a consulting rosarian for more than 28 years in her own Silkies Rose Farm Nursery. She has designed many private and public rose gardens, presents regularly on radio talk-back gardening programs, has enjoyed stints on television and she loves to inspire her customers to grow the most enchanting and easy-care rose gardens.



## **Melissa King – 2.00pm Sunday**

Melissa has worked alongside Peter Cundall on ABC's Gardening Australia, combined her love of gardens, food and travel as one of the hosts of the travel series Gurus Explore, transformed front yards in Channel 9's make-over series Battlefronts, hosted the gardening segment on Channel 10's The Circle and inspired people of all ages to get out into the garden on Foxtel's Garden Angels. These days Melissa stars in The Garden Gurus on Channel 9 and is proud to call herself a 'Gardenette'.

# FREQUENTLY ASKED QUESTIONS

## Q. What types of roses do you have in the garden?

**A.** Garden roses are grouped in two ways: according to their habits of growth eg. shrub roses, climbers, standards, ramblers, ground covers, and to their ancestry e.g. teas, hybrids, heritage roses. These groups which often overlap, are represented throughout the garden. The number of plants in the garden is approximately 5500.

## Q. How are the roses pruned?

**A.** From June to September, the volunteers prune the roses lightly with the aim of producing maximum bloom. Hybrid Teas and Floribundas have unhealthy, aged and spindly growth removed entirely, then the remainder is pruned to about pencil thickness. Once-flowering roses are pruned after they finish blooming in late summer.

## Q. How do you control weeds?

**A.** Our volunteers do a lot of weeding especially around the base of rose bushes and mulch helps to control weeds. We use some herbicides for pre emergent and broad leafed weeds but mostly Parks oversee the spraying program.

## Q. How do you control diseases?

**A.** Parks spray plants after pruning with white oil to treat scale. After a couple of weeks a fungicide is used to control powdery mildew and black spot. Spraying continues throughout summer as required.

## Q. Which rose has the best fragrance?

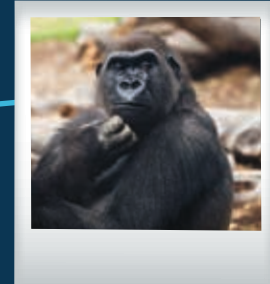
**A.** Fragrance is in the 'nose' of the beholder, with weather and time of day having an influence on its intensity. Heritage roses and David Austin roses are especially fragrant. The foliage also has a scent in some cases - the Moss roses in the Heritage Border are noted for this.

## Q. Who maintains the Rose Garden?

**A.** The Victoria State Rose Garden Supporters (VSRGS), a dedicated group of volunteers, are responsible for pruning and dead-heading, mulching etc. We carry out a multitude of other tasks to keep the roses looking at their best and work on projects to extend and improve the Rose Garden in co-operation with Park staff. The new entrance arch was opened in 2012. The Supporters were responsible for this innovation which improves access to the garden. The Garden is the responsibility of Parks Victoria Werribee Park. Parks staff arrange for lawn mowing, care of the pathways, edging of the beds, garden watering and disease prevention.

# Experience Wyndham

wyndhamcity  
city. coast. country



## Werribee Visitor Information Centre

Werribee Park Precinct, K Road, Werribee South (located at the entry to Werribee Open Range Zoo)



8734 6006



tourism@wyndham.vic.gov.au



/experiencewyndham



experiencewyndham.com.au

# All Green Nursery & GARDEN SUPPLIES



130 Old Geelong Road,  
Hoppers Crossing  
(03) 9749 1688  
info@allgreen.com.au  
www.allgreen.com.au



Find us on  
Facebook



## Trading Hours

Monday to Saturday 7am-5pm  
Sunday Closed  
Public Holidays Closed  
Open 1st Sunday of the Month for  
Super Sunday Events

# THANK YOU TO OUR SPONSORS

## Major Sponsor



## Supporting Sponsors



Share the day with your friends and family  
@experiencewyndham and #experiencewyndham

For more information on events in Wyndham:  
[www.experiencewyndham.com.au](http://www.experiencewyndham.com.au)

*Please supervise children at all times.*

