

**West's Road RDF & Waste Management
Community Reference Group
AOC
23rd Meeting
Accepted Notes
16 February 2017
Conference Rooms C & D**

Present:

Cr Peter Maynard	- Councillor (Iramoo Ward), Wyndham City Council
Karen Hucker	- Community representative
Jacqui Scott	- Community representative
Kimi Pellosis	- Community representative
Peter Haddow	- Community representative
Julian Menegazzo	- Adjoining landowner representative
John Faranda	- Ratepayer/business representative (Werribee South Ratepayers Association)
Harry Van Moorst	- Environment group representative (WREC)
Stephen Thorpe	- Director City Operations, Wyndham City Council
Simon Clay	- Manager Refuse Disposal Facility, Wyndham City Council
Bruce Turner	- Independent Chair

Visitors:

nil

Apologies/ absent:

Cr Tony Hooper	- Councillor (Harrison Ward), Wyndham City Council
Cr Walter Villagonzalo	- Councillor (Chaffey Ward), Wyndham City Council
Michelle Lee	- Planner, Metropolitan Waste and Resource Recovery Group (MWRRG)
Lindsay Swinden	- Community representative

The meeting commenced at 4.30 pm. No conflicts of interest were declared.

1. Welcome and Introductions

Bruce welcomed members to the meeting.

2. Notes and actions from the previous meeting

The notes from the 21st meeting held on 15 December 2016 were not reviewed as a draft had not yet been completed for circulation.

Bruce ran through outstanding actions from the previous meetings:

Action M14-2.2	<i>Finalised notes of the previous meeting, including the notes of the CRG workshop conducted by Michelle, to be published on Council's website.</i>	Yet to be completed
Action M15-2.1	<i>Update the CRG page on the WCC web site.</i>	Yet to be completed
Action M15-3.1	<i>WCC to send a letter to each member of the CRG confirming their term and expiry date.</i>	Yet to be completed
Action M15-3.2	<i>Simon to check with WCC Communications Team about getting a call for expressions of interest for new</i>	Yet to be completed for later edition of newsletter

	<i>nominations in Council's January-February newsletter.</i>	
<i>Action M17-3.1</i>	<i>Simon to resolve this (membership) prior to the next meeting</i>	Yet to be completed
<i>Action M17-6.1</i>	<i>Simon to look at including Connie Menegazzo in the survey team and to plot historical complaints and survey results compared to time of delivery and other operating and atmospheric conditions at the landfill</i>	Yet to be completed
<i>Action M17-7.1</i>	<i>Provide data on recycling from the transfer station</i>	Yet to be completed
<i>Action M18-6.1</i>	<i>Calculate the CO2 equivalent of the landfill gas using the carbon tax methodology</i>	Yet to be completed
<i>Action M18-6.2</i>	<i>Circulate the auditor's report on the phytocap trial when it becomes available</i>	Report not yet available
<i>Action M18-6.3</i>	<i>Simon to provide a status update on where things stand with landscaping plans (i.e. consolidate/ review what CRG has seen and where things are at now)</i>	Revised plans were tabled in October but have yet to be considered
<i>Action M19-5.1</i>	<i>Circulate a copy of the Wyndham Vale Buffer Study and ESO to the CRG members</i>	Buffer Study circulated. ESO not available for public circulation
<i>Action M19-7.2</i>	<i>Simon to provide gas and groundwater monitoring data as part of regular meeting agenda, and to look at creation of a secure site for viewing of monitoring results between meetings.</i>	Yet to be fully completed
<i>Action M20-5.1</i>	<i>Simon to ask Elio for a status update and a timeframe for expected outcomes related to strategic land use planning</i>	Yet to be completed
<i>Action M20-7.1</i>	<i>Simon to give priority to installing noise attenuation barriers at the active tip face.</i>	No action taken to date
<i>Action M20-7.2</i>	<i>Simon to investigate whether local air quality monitoring would be of benefit</i>	See item 4
<i>Action M20-7.3</i>	<i>Simon to brief CFA</i>	See item 4 - Completed
<i>Action M20-7.4</i>	<i>Simon to contact EPA to discuss the BTQ Bulla fire</i>	Not yet completed
<i>Action M20-7.5</i>	<i>Simon to schedule a meeting in 3-4 weeks' time for any interested and available CRG members to further discuss the hot spot.</i>	Complete – see separate notes of that meeting (21 November 2016)
<i>Action M20-7.6</i>	<i>Simon to circulate tabulated groundwater data</i>	Not yet completed
<i>Action M21-4.1</i>	<i>Simon to provide regular updates on the progress with extinguishing the hot spot.</i>	See item 4
<i>Action M21-5.1</i>	<i>Michelle to provide a report on MWRRG's 'residual procurement' initiative to February 2017 meeting.</i>	Not yet completed
<i>Action M21-8.1</i>	<i>Simon to circulate a copy of the PAN.</i>	Completed
<i>Action M21-10.1</i>	<i>Simon to setup file sharing for the CRG.</i>	Not yet completed

3. Membership renewal

Simon indicated the actions related to this were still on hold. He reported that a new staff member was about to commence who would be able to progress these actions.

4. Hot spot update

Simon tabled an update report on the Cell 4A hotspot (refer attached). He clarified that Council had taken the precaution of pumping water, and then leachate, progressively into only 2-3 wells at a time from the outside towards the centre of the hotspot.

It was agreed that temperature probe tests needed to be organised as soon as possible to determine the results of the pumping.

Action M22-4.1 Simon to organise for temperature probes to be reintroduced into the hotspot area as soon as possible.

Simon took the CRG through the graphs of gas data from monitored wells. He explained that wells where the balance gas % increased had been closed again, as they must have been drawing in outside air. Wells 80 – 82, located adjacent to the hotspot, show a clear contrast in gas composition before and after the pumping of water into the hotspot and now show a return to normal (anaerobic) landfill conditions.

Kimi asked if any lessons had been learned that would affect future management of the RDF. Simon responded that overfilling of cells (which results in steeper batters, more prone to air ingress) would be avoided.

5. Waste management and resource recovery in general

A presentation offered by Michelle on a collaborative 'residual procurement' initiative that MWRRG was pursuing with a number of Councils was held over to the next meeting.

Simon reported on a recent MWRRG meeting he had attended (covering topics such as standard bin lids, apartments, alternatives to landfill, and collaborative procurement). The CRG discussed the idea of Council taking the opportunity to change bin lid colours in new estates and when the waste collection contract is renewed.

6. Strategic planning context

No further update was available for the meeting. Elio will be invited to a future meeting when there has been further progress on developments related to the urban growth boundary.

7. Works Approval Application

Simon advised that, on 19 January, EPA had sought further information regarding: long-term undisturbed groundwater levels (2 metres separation required between the base of cells and this level), leachate generation modelling for future cells, and stormwater management.

Simon reported that, up until 7 February, EPA had received 168 submissions of which 139 were proformas.

8. RDF Update

8a Proposed Capital Works Program for 2017/18

Simon ran through a list of capital works items, including trucks, mobile noise attenuation, litter barrier upgrade, rehabilitation of cells 1B to 3, and connection of leachate ponds to sewer.

Stephen explained that the focus of the capital works program was on meeting statutory obligations. Council is also looking at purchasing land for a new transfer station, meaning the previous plans for an upgrade of the existing transfer station, that were reviewed by the CRG, have been put on hold. Karen asked if there would be resources set aside for planning of any new transfer station. Stephen confirmed that there would.

8b Performance Dashboard

Simon provided incoming tonnages. He said figures on recycling tonnages were very hard to get, in terms of time and resources. He had also been unable to get data on greenhouse gas emissions.

There had been one odour complaint just prior to Christmas for which Simon and RDF staff had been unable to locate a source. Simon said that new caps had recently been installed on leachate sump risers which seal much better than the previous caps, so this would have a positive effect on odour emissions.

8c Landscaping

Consideration of the landscape plans (tabled at the October meeting) was held over until the April meeting – Simon indicated this item will require a half hour discussion.

8d Landfill gas management update

Simon provided a summary related to:

- The increase in gas volume being collected by the gas extraction system following the installation and commissioning of gas wells on Cell 4B in late 2016.
- Capping and gas well repair work on the northwest portion of Cell 2B has been completed however elevated off site gas readings are still being recorded in Bore 29 (north of the rail line). Further investigation into why this was occurring identified that Cell 2B (along with Cell 1B and 2A) had been constructed with a base liner only and no side wall liner. The next steps to minimise the offsite migration of gas will be reviewed with EPA

8e Leachate management and groundwater monitoring

Nothing to update.

8f Rehabilitation

Nothing to update.

9. Members report back and Questions

Kimi asked if the rapidly increasing population of Wyndham meant increasing waste. Simon responded that it did, even if the amount of waste generated per household is able to be reduced. Jacqui spoke about her experience of living in Holland where residents are involved in sorting their recyclables on a street or local area basis.

Kimi suggested that education about waste reduction and recycling aimed at the very young would be useful. Karen commented that this occurs in Council's Green Living Series Program.

Cr Maynard commented on the cost of poor waste sorting practices by residents resulting in Council being charged according to the amount of contamination in the resource recovery stream (\$60,000 per % of contamination). He agreed that education was a key tool in addressing this issue.

Jacqui relayed concerns over the cost of truck vs trailer loads of household waste taken to the RDF by residents. Simon commented that charges by weight would be fairer than by vehicle type.

10. Communications

The actions under this item (ie webpage update and file sharing arrangements) are still to be progressed.

11. Other business

Harry and Karen queried Stephen regarding the clear need for Simon to have more support with the efficient running of the CRG. Stephen indicated that an additional staff member had been recruited and was due to start in the coming week.

12. Next meeting

The next meeting was scheduled for 4.30 to 7pm on Thursday 27 April 2017.

The meeting closed at 7:00 pm

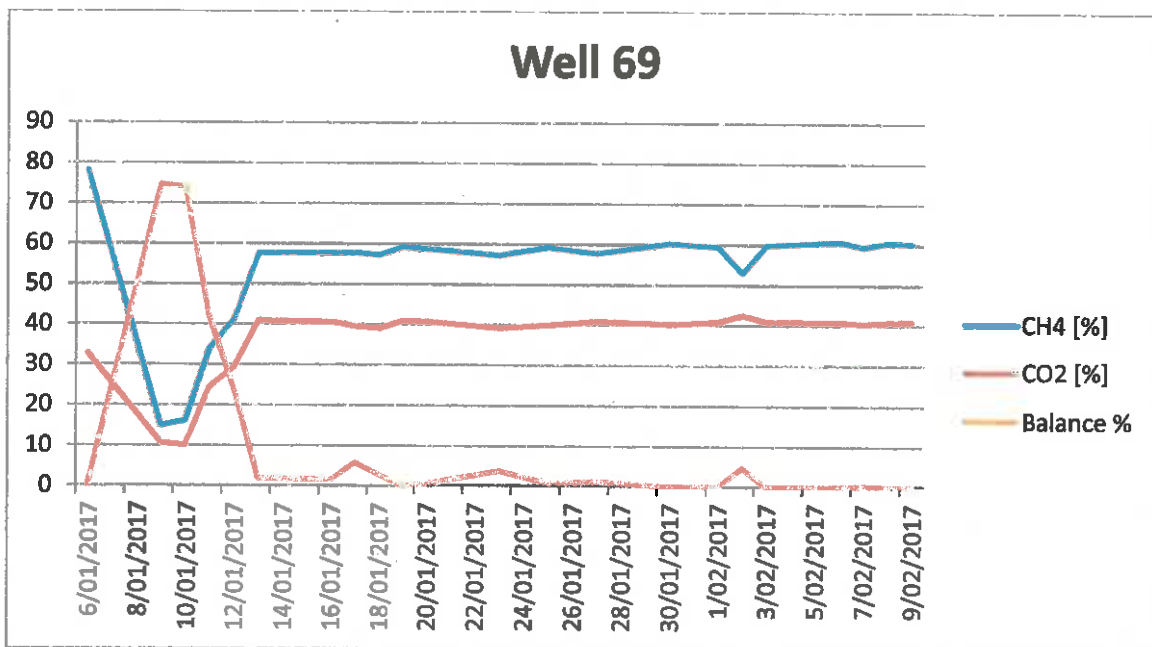
Cell 4A Hotspot update 16 February 2017

During the period 14/12/16-2/1/17 water and then leachate was pumped down the network of injection wells that had been drilled into and around the area of the hotspot on Cell 4A. A total of approximately 3.5 million litres was injected into the cell during this period.

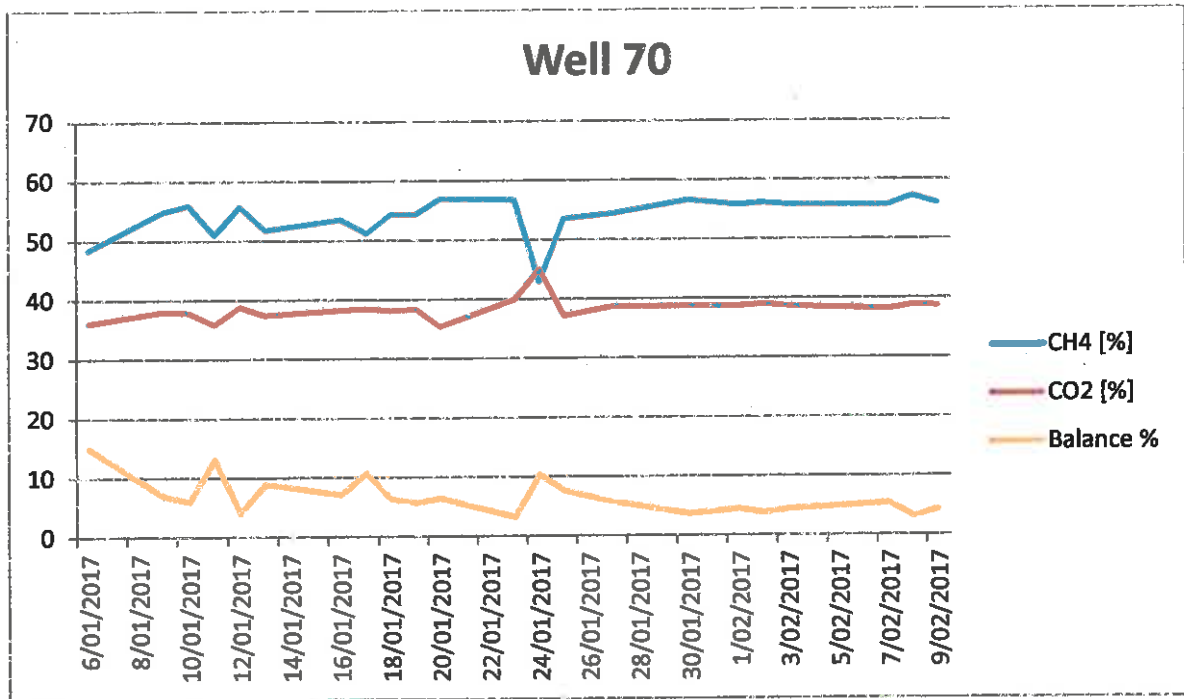
The additional leachate generation is currently being handled by increased evaporation due to warmer weather and offsite disposal via Eastern Liquid Services. To date approximately 500,000 litres has been removed for offsite disposal.

Gas extraction on the closed gas wells recommenced at a low extraction rate on 6/1/17 with the following wells being opened: 69, 70, 76, 77, 78, and 79.

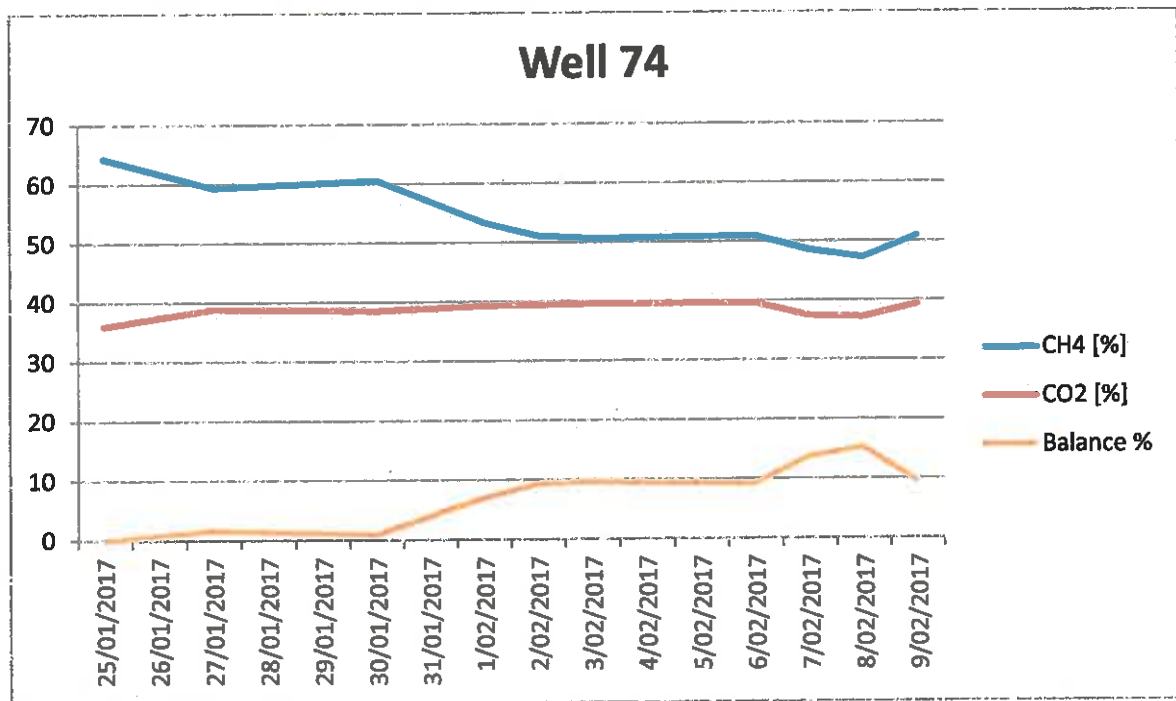
Further wells (74, 75, 80, 81 and 82) were opened between 23-25 January. Gas data from each well has been monitored daily and the graphs of gas composition are presented below.



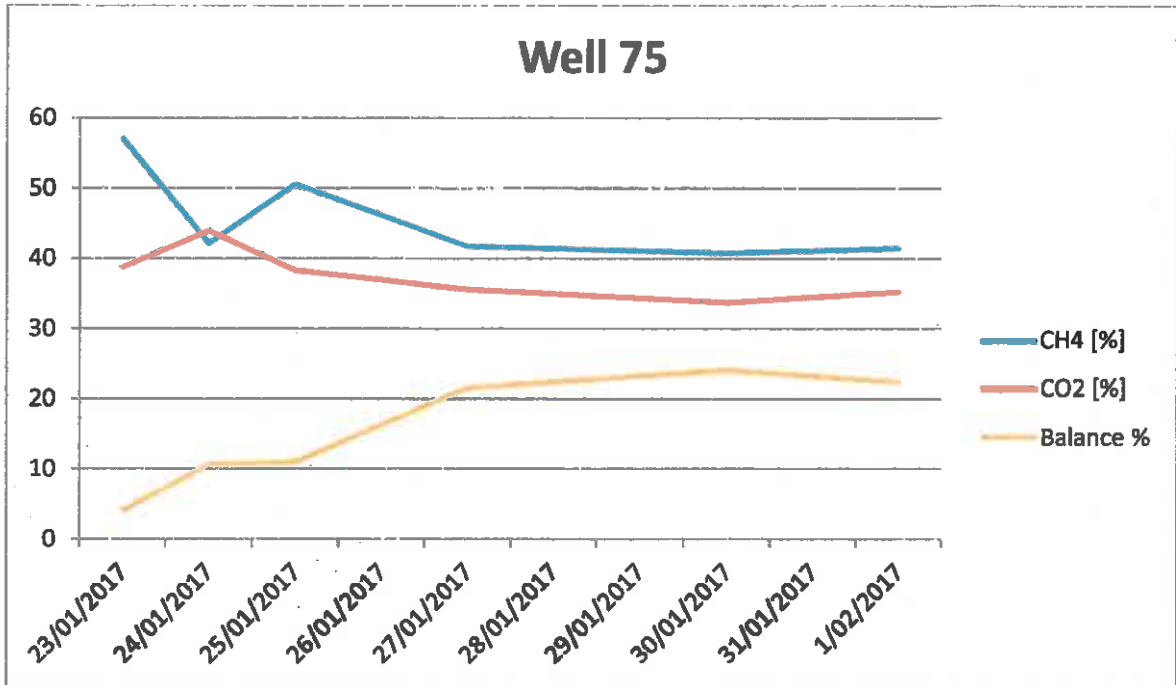
Located on the eastern side of Cell 4A away from the hotspot. The gas profile is indicative of normal anaerobic conditions. The anomaly around 10/1/17 is probably due to sampling error allowing air ingress into the sampling line.



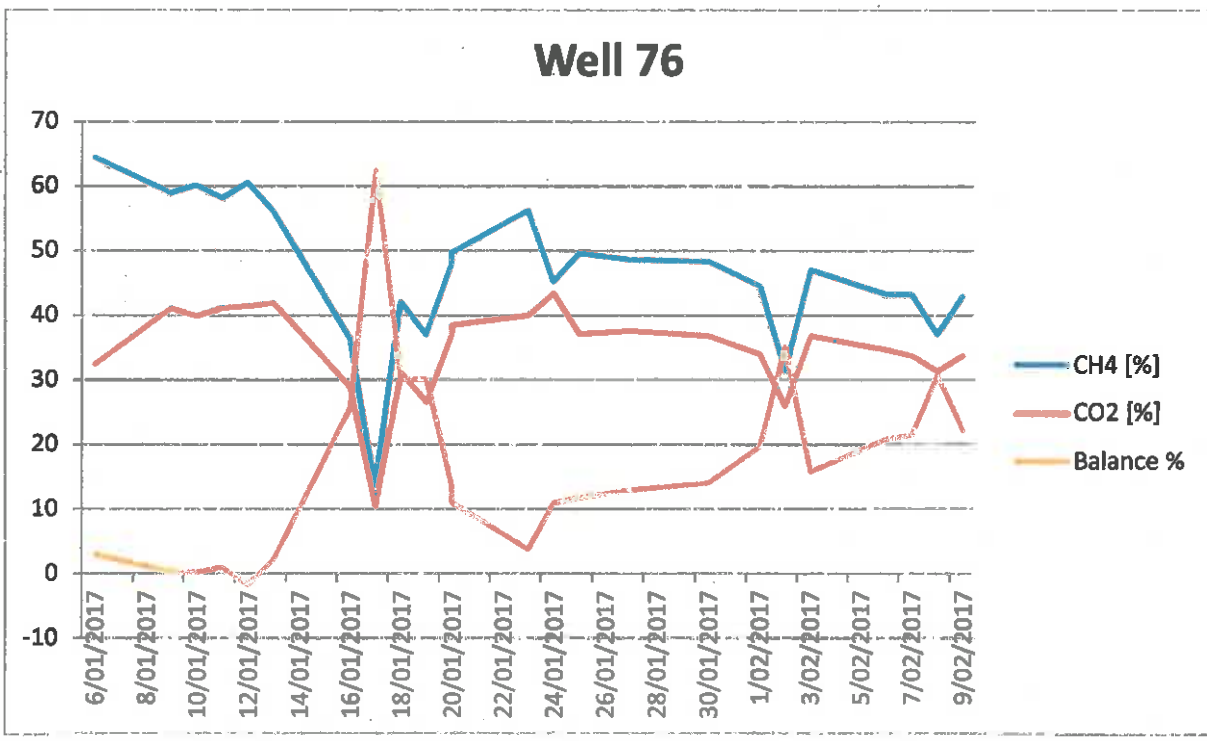
Located on the eastern side of Cell 4A away from the hotspot. The gas profile is indicative of normal anaerobic conditions.



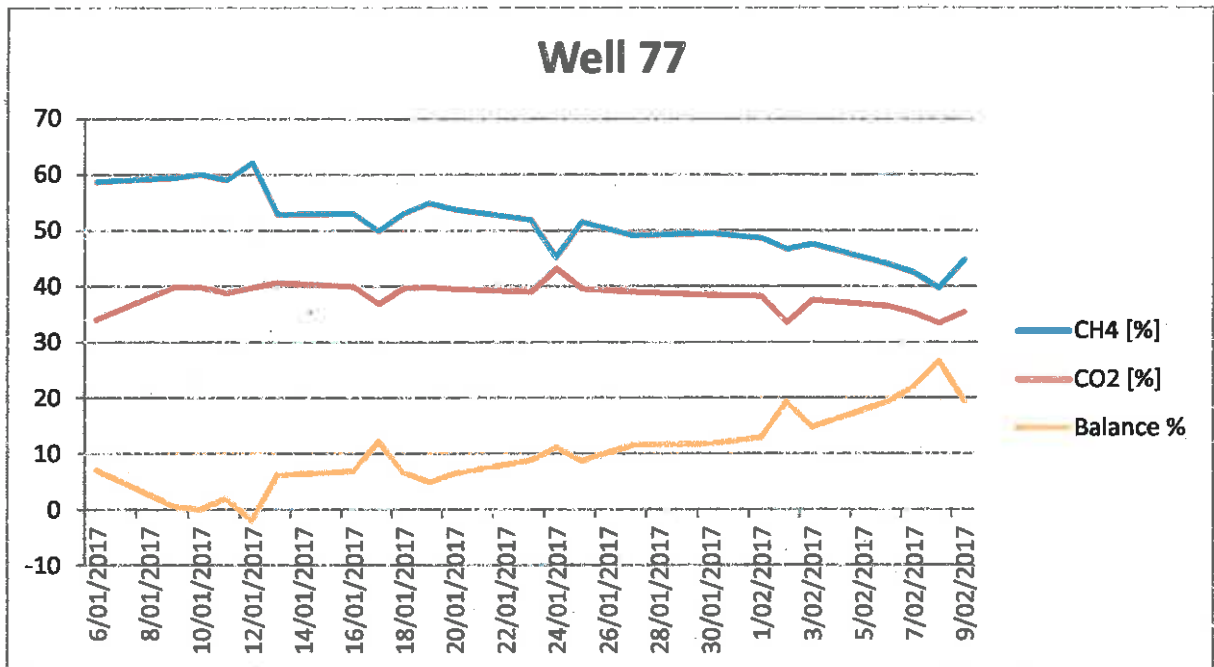
Located to the south of the hotspot. The amount of balance gas (air) is being monitored closely.



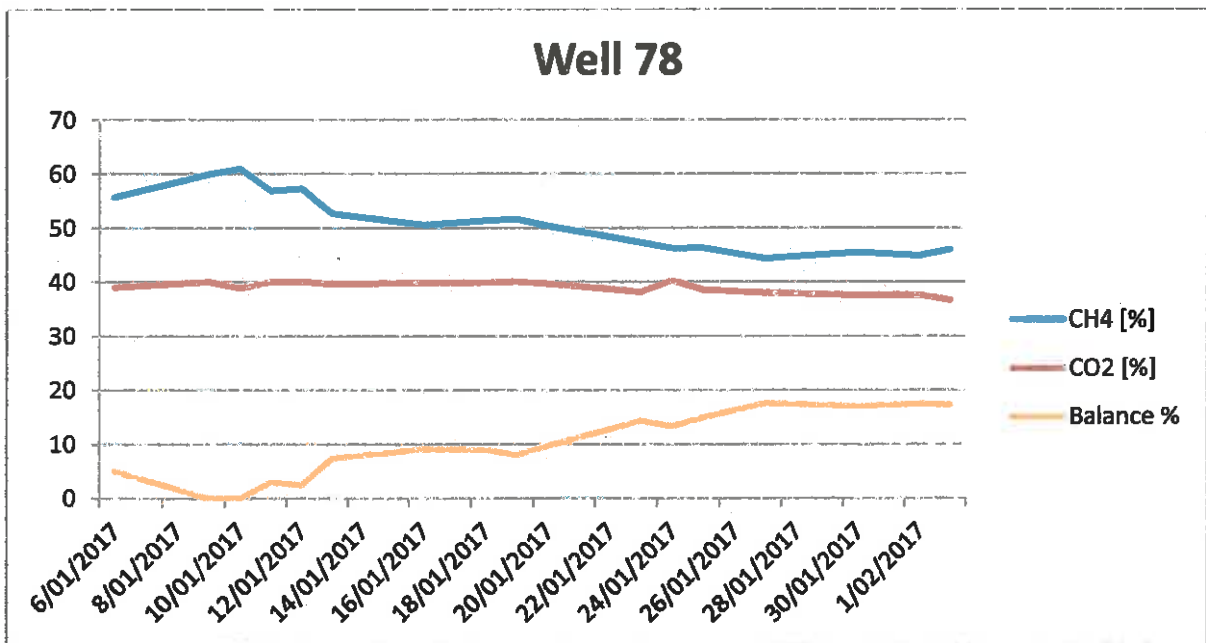
Directly in the area of the hot spot. Well was closed on 1/2 /17 due to increase in balance gas, most likely due to air ingress indicating further reprofiling and compaction of intermediate cover is required in this area.



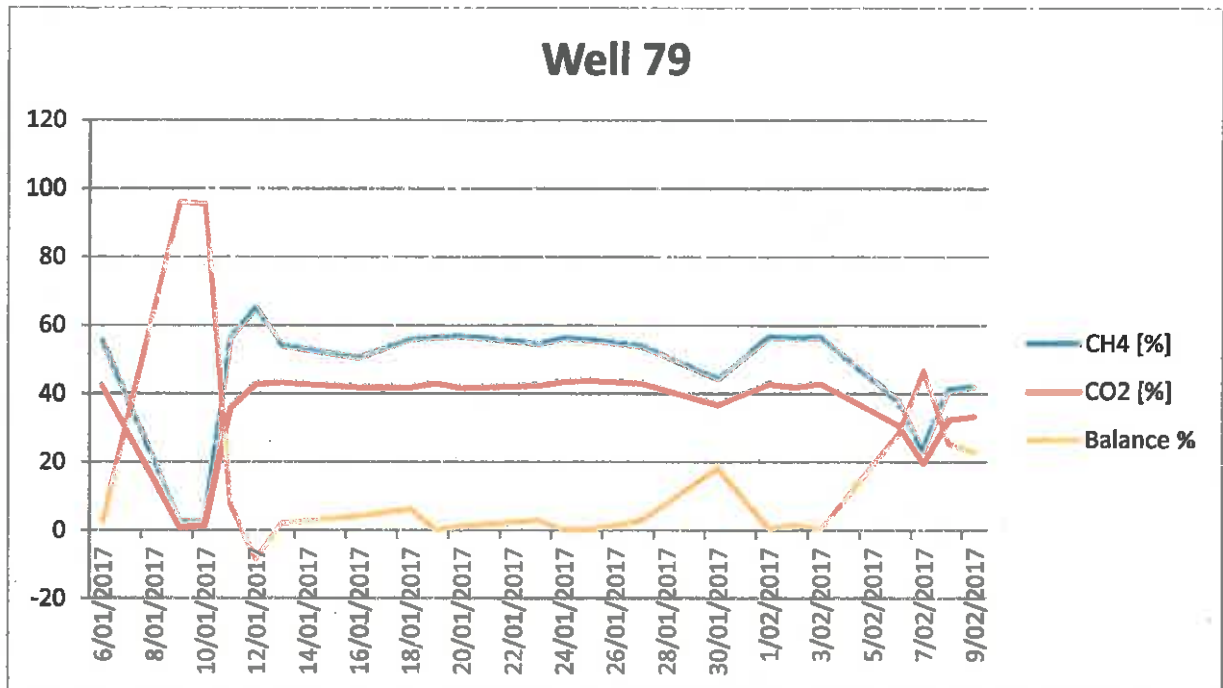
On the east side of Cell 4A and away from the hot spot. Gas composition generally indicates air ingress. Well closed on 9/2/17 (note reading 17/2/17 likely to be sampling error). Further reprofiling in this area is required.



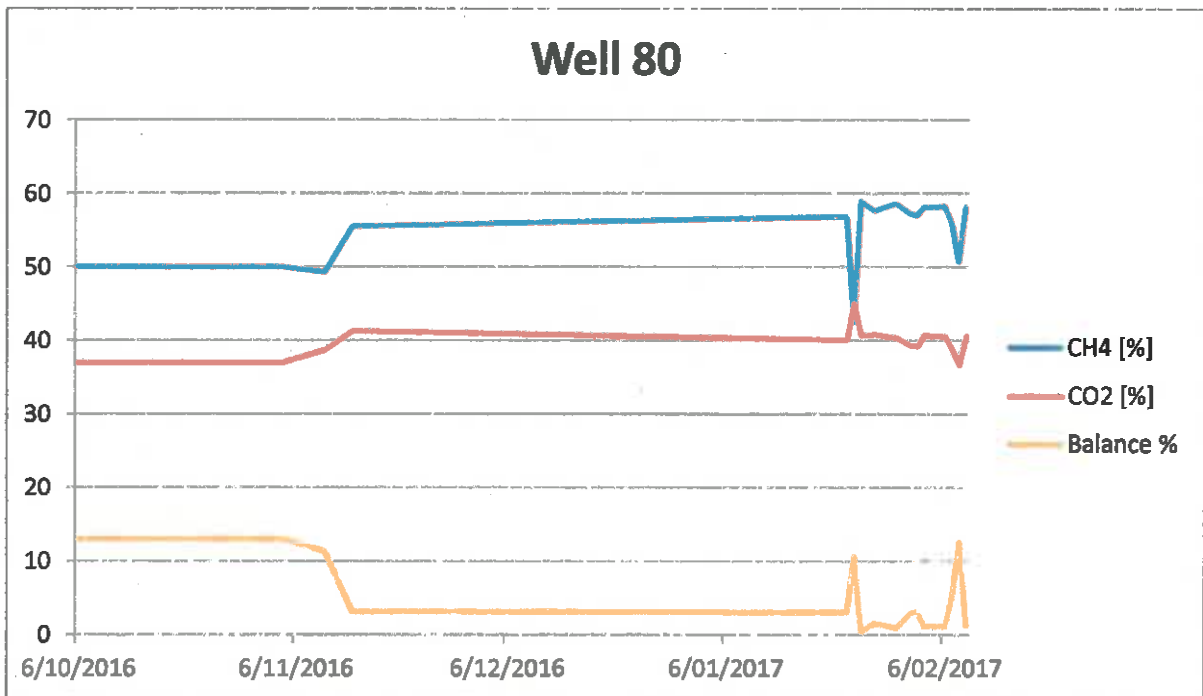
Located on the southeast side of Cell 4A. Steadily increasing air ingress indicates further intermediate cover and reprofiling is required in this area. Well closed 13/2/17.



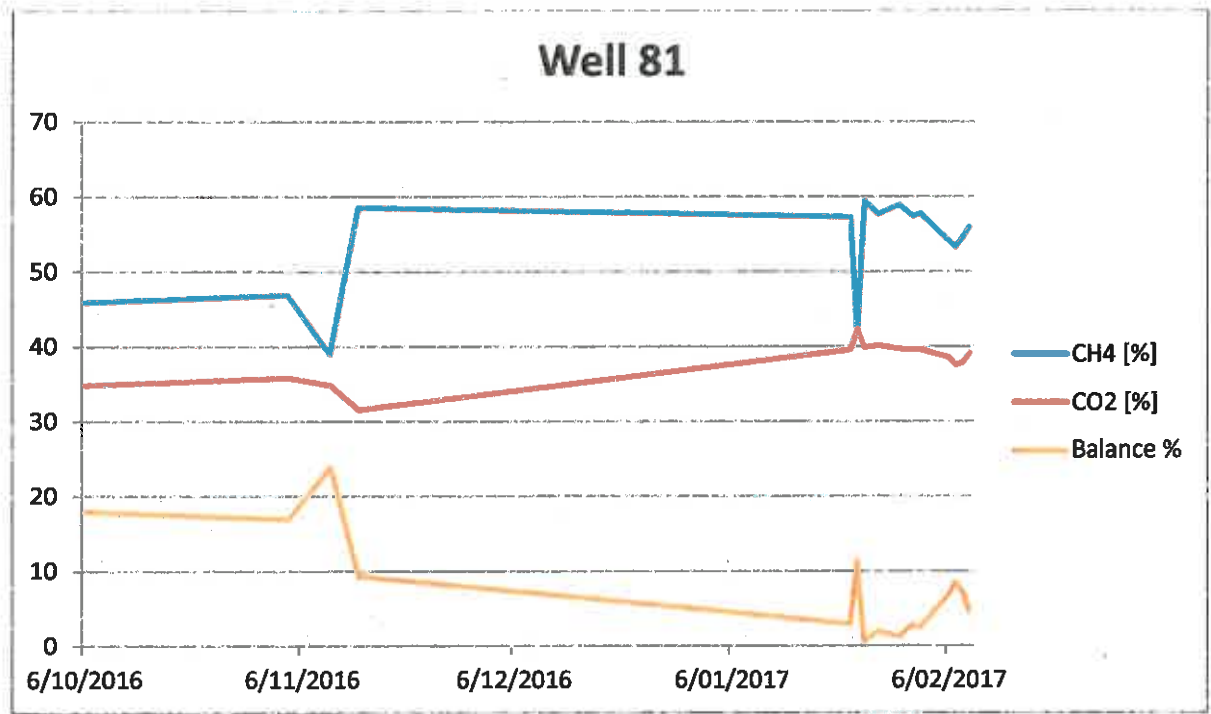
Located on the south side of Cell 4A. Steadily increasing air ingress indicates further intermediate cover and reprofiling is required in this area. Well closed 13/2/17.



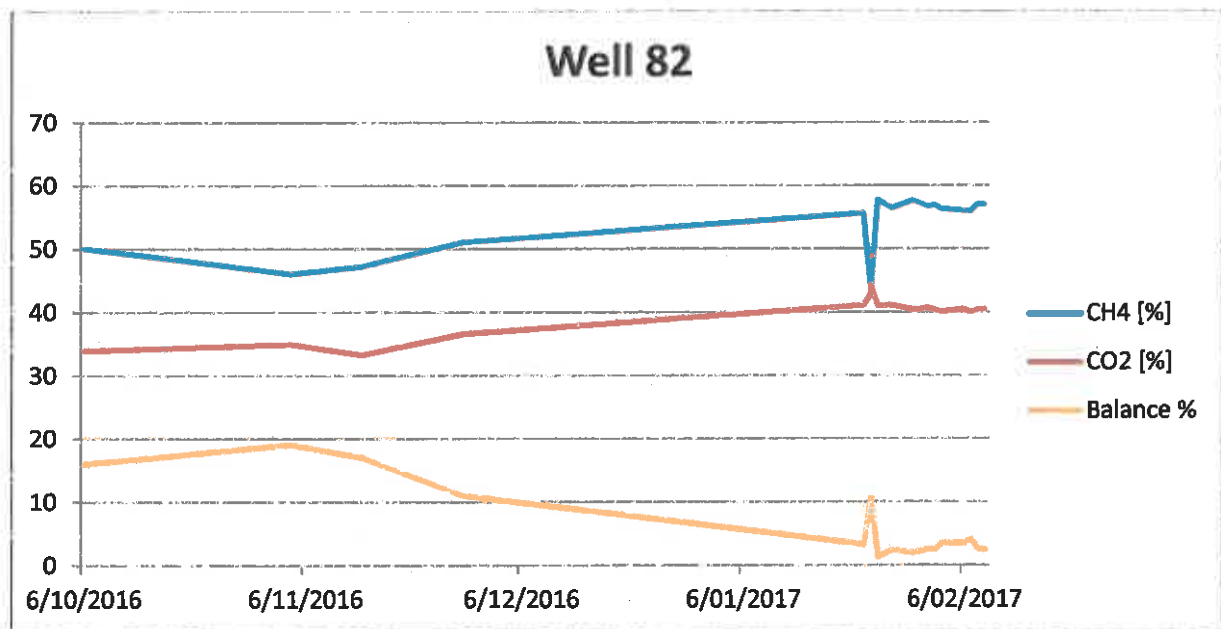
Located on top of Cell 4A to the south of the hot spot. Readings from 9/1/17 indicated sampling error. Well closed 9/2/17 as a precaution as data indicates air ingress may be occurring.



Located adjacent to the hot spot. Shows a clear contrast in gas composition pre and post work on the hot spot and now indicative of normal anaerobic conditions.



Located adjacent to the hot spot. Shows a clear contrast in gas composition pre and post work on the hot spot and now indicative of normal anaerobic conditions.



Located just east of hot spot. Shows a clear contrast in gas composition pre and post work on the hot spot and now indicative of normal anaerobic conditions.