

**West's Road RDF & Waste Management  
Community Reference Group  
AOC  
20th Meeting  
Notes**

**27 October 2016**

**Conference Rooms A & B**

**Present:**

Karen Hucker – community representative  
Harry Van Moorst – WREC representative  
Julian Menegazzo – adjoining landowner representative  
Jacqui Scott - community representative  
Michelle Lee – Planner, Metropolitan Waste and Resource Recovery Group (MWRRG)  
Simon Clay – Manager Refuse Disposal Facility  
Bruce Turner – Independent Chair

**Visitors:**

nil

**Apologies/ absent:**

Kimi Pellosis – Community representative  
Peter Haddow – Community representative  
Lindsay Swinden – Community representative  
John Faranda – Werribee South Ratepayers Association representative

The meeting commenced at 5.30 pm. No conflicts of interest were declared

**1. Welcome and Introductions**

Bruce welcomed members to the 20<sup>th</sup> meeting of the Community Reference Group. Simon explained that neither Councillor was present at this meeting as Council had been dissolved pending announcement of the outcome of the election. In addition Cr Fairclough had not stood for re-election. The allocation of new councillors to portfolios and groups is expected to occur towards the end of November. Simon also advised that David Suder had resigned from Wyndham City Council and, in response to a question from Julian, also indicated that there has not been any decision made about a replacement for David's role.

Simon noted the contribution of Councillors Bob Fairclough and Peter Maynard as well as David to the Community Reference Group.

**2. Notes and actions from the previous meeting**

The notes from the 19<sup>th</sup> meeting held on 18 August 2016 were taken as presented.

Bruce ran through outstanding actions from the previous meeting:

Action M14-2.2	<i>Finalised notes of the previous meeting, including the notes of the CRG workshop conducted by Michelle, to be published on Council's website.</i>	Yet to be completed
----------------	--	---------------------

Action M15-2.1	Update the CRG page on the WCC web site.	Yet to be completed
Action M15-3.1	WCC to send a letter to each member of the CRG confirming their term and expiry date.	Yet to be completed
Action M15-3.2	Simon to check with WCC Communications Team about getting a call for expressions of interest for new nominations in Council's January-February newsletter.	Yet to be completed for later edition of newsletter
Action M16-3.2	Ask Elio Comello to attend the next meeting to further discuss the State Planning development related to the urban growth boundary.	Replaced by Action M20-5.1 from this meeting
Action M17-3.1	Simon to resolve this (membership) prior to the next meeting	Yet to be completed
Action M17-6.1	Simon to look at including Connie Menegazzo in the survey team and to plot historical complaints and survey results compared to time of delivery and other operating and atmospheric conditions at the landfill	Yet to be completed
Action M17-7.1	Provide data on recycling from the transfer station	Yet to be completed
Action M17-9.1	Some options for a site visit to the RDF to be proposed to the CRG	Completed
Action M18-6.1	Calculate the CO2 equivalent of the landfill gas using the carbon tax methodology	Yet to be completed
Action M18-6.2	Circulate the auditor's report on the phytocap trial when it becomes available	Report not yet available
Action M18-6.3	Simon to provide a status update on where things stand with landscaping plans (i.e. consolidate/ review what CRG has seen and where things are at now)	See item 7
Action M18-6.4	Simon to circulate material on alternate daily cover systems.	Completed
Action M19-5.1	Circulate a copy of the Wyndhamvale Buffer Study and ESO to the CRG members	Buffer Study circulated. ESO not available for public circulation
Action M19-6.2	Fact Sheets to be circulated to the CRG members	Completed
Action M19-6.3	CRG members to provide comment on the draft fact sheets by 26 August 2016	Completed – no comments received
Action M19-7.1	Circulate a copy of the RDF Strategic Plan and Action Plan to the CRG members	Completed
Action M19-7.2	Simon to provide gas and groundwater monitoring data as part of regular meeting agenda, and to look at creation of a secure site for viewing of monitoring results between meetings.	See Item 7; yet to be fully completed
Action M19-7.3	Simon to provide a summary of odour complaints to the CRG	Completed
Action M19-7.4	Simon to provide current height levels for Cell 4A	Completed

### **3. Membership renewal**

Simon indicated he had not been able to action this any further due to a lack of resources, however final approval for administrative support had just been obtained and advertising for a personal assistant would commence the following week. One of the first tasks for this person will be to finalise all the membership arrangements and to progress the call for new members.

### **4. Waste management and resource recovery in general**

Michelle Lee provided an update on the MWRRG Implementation Plan which had recently been released by the Minister. Key points:

- Projected population growth means a related increase in waste
- There will be an increase in waste to landfill under business as usual
- Following landfill closure in the Clayton area there are now a smaller number of key landfills, with the RDF being one of these.

A copy of the presentation is attached.

Jacqui asked how the plan would be funded. Michelle discussed the levy and noted there is a significant amount of levy available to the government – perhaps as high as \$600 million. MWRRG is making a submission to the government for some funding to assist with running a proper procurement process to seek alternatives to landfill.

Simon asked whether councils are really interested in paying more as the current approach seems to be for the lowest cost outcome. Michelle indicated that a rigorous procurement process will explore this.

Michelle then discussed the need for alternate waste technologies (AWT) in the south-east of Melbourne due to the limited landfill space. Harry indicated that there is also a clear need in the west because this is where all the waste is coming to. For genuine equality AWTs need to be available on both sides of Melbourne.

Harry then raised two further points:

- In his view, the reliance on market-driven solutions proposed in government policy, and hence the Plan, was flawed. He used composting as an example where the technology is well understood but the current economics rely on markets for the finished product and these do not always exist.
- The hubs seem to be mostly around landfills (meaning, he suggested, more waste will need to go into landfill), and better planning for other infrastructure is required.

Michelle noted that there is also an infrastructure schedule in the plan, however all recognised this wasn't as well developed as the landfill schedule.

### **5. Strategic planning context**

No further update was available for the meeting. Elio will be invited to a future meeting when there has been further progress on developments related to the urban growth boundary.

*Action M20-5.1 Simon to ask Elio for a status update and a timeframe for expected outcomes related to strategic land use planning.*

## 6. Works Approval Application

Simon advised that the Works Approval application had been submitted to EPA, however it had not been accepted; EPA had requested additional information before accepting the application. Once it is accepted by EPA it will be advertised by EPA and formal comment invited.

The key points of additional information requested by EPA related to:

- Establishing long-term ground water levels so that the separation requirement between the waste and groundwater in future cells could be assessed
- More information on groundwater quality to demonstrate existing groundwater quality
- Additional design information on the proposal for piggy back cells on top of the old parts of the landfill (Cells 1B, 2A, 2B and 3)
- Further detail on leachate management including identifying a proposed location for a third leachate pond if required in the future
- An indicative timeframe for progressive rehabilitation of closed cells

There was discussion about the possibility of piggyback cells on the older cells (this would not include Cell 1A at the front of the site) and how they might be designed and how it would marry into the other newer cells on the site.

## 7. RDF Update

### *7a Performance Dashboard*

Simon tabled data on tonnages received in the first three months of the 2016/17 year, with a comparison to the 2015/16 year (attached). Harry asked for the actual tonnages to be written directly on the bars of the chart.

Simon provided a summary of odour complaints received in the 2016/17 financial year to date. There have been 3 complaints and all have been validated as originating from the RDF and the probable source/cause identified. Corrective actions have been implemented to fix a number of leaks associated with the leachate handling system (refer attached).

Julian noted that the odours appear to have reduced. Simon responded by saying he was ensuring the RDF staff took odour complaints more seriously and investigate potential causes as soon as a complaint is received.

Julian noted that there is still some noise from the RDF on still nights (around 2-3 am) and requested that the proposed noise attenuation works be completed.

*Action M20-7.1 Simon to give priority to installing noise attenuation barriers at the active tip face.*

Simon indicated that the recycling tonnages (Action M17-9.1) were proving difficult to extract. Greenhouse gas emissions needed to be updated and then would be circulated (M18-6.1).

### *7b Annual Performance Statement*

The 2015/16 Annual Performance Statement has been submitted to EPA and would be available from the EPA website shortly. Simon provided a summary of the APS. The RDF licence has 26 conditions and 20 of these were complied with for the year. The non-compliances related to:

1. Offensive odours must not be discharged beyond the boundary: Three non-compliances were reported where the RDF was verified as being the source of an odour.

2. You must ensure that litter is not deposited beyond the boundaries of the premises: Five non-compliances were reported where wind-blown litter was deposited beyond the site boundary. These all occurred on days of high wind.
3. You must ensure that waste does not burn at the premises: Three fires were reported to EPA during the year. Two of these were surface fires and were extinguished completely using on site resources. The subsurface fire is discussed further below.
4. You must extract leachate from Cells 4A, B and C so that the depth of leachate does not exceed 300 mm: Monthly measurements indicated that was exceeded in Cells 4A and B on March, April, May and June.
5. You must prevent emissions of landfill gas exceeding BPEM investigation levels: The 1% methane investigation limit was exceeded in offsite bores to the north of Cell 2B. Monitoring of surface emissions in July 2015 and Feb 2016 showed some high surface gas readings.
6. You must not contaminate land or groundwater: Quarterly groundwater monitoring indicated elevated levels of alkalinity, ammonia, iron and manganese compared to background in some monitoring bores.

There was a more in depth discussion about the subsurface hot spot or fire (mentioned in Point 3 above). This is located in Cell 4A and, based on temperature probe monitoring, appears to be restricted to an area of approximately 10 metres by 20 metres and at a depth of 9-12 metres below the top surface of Cell 4A. There is no evidence of the sub surface hot spot at the surface as there is no subsidence, cracking, voids, smoke or odour evident. The hot spot may have developed through air ingress from the gas extraction system. The following actions have been undertaken so far: the gas extraction system on that part of Cell 4A has been turned off to minimise further air ingress and additional cover material has been applied to the batters. The intent of this has been to suffocate the fire activity through reducing air ingress and allowing methane and carbon dioxide concentrations within the cell to build back up. In order to address this further, a series of injection wells will be drilled in the area of the hot spot and liquid injected through these wells into the depth profile showing the elevated temperature. This should remove the heat from and extinguish the hot spot and this will be verified by further temperature monitoring.

Julian expressed concerns that this could have some health and safety impacts and asked if any air quality monitoring had been conducted so far. Simon reiterated that there is no evidence of the hot spot at the surface.

Julian also asked whether the CFA had been notified. Simon advised that the CFA had not been notified as there was currently no conventional fire to be extinguished. He agreed there could be value in briefing CFA prior to the drilling of the injection wells.

*Action M20-7.2 Simon to investigate whether local air quality monitoring would be of benefit*

*Action M20-7.3 Simon to brief CFA*

Harry indicated that the BTQ landfill at Sunbury had, and still has, a subsurface fire that has burned for a number of years and that EPA may have some useful, relevant experience to share from this situation.

*Action M20 – 7.4 Simon to contact EPA to discuss the BTQ Bulla fire*

There was then a general discussion about the risk from the subsurface fire especially around whether it would develop into a surface fire. Simon expressed his view that, given the lack of any visible signs, the relatively small extent as determined by the temperature probes, and that it seems to be confined to a relatively narrow band of thickness, then a surface fire was unlikely.

Julian expressed his view that the Councillors needed to be informed of this as a matter of urgency if they weren't already aware. It was noted that pending the election outcome Councillors could not be advised at present.

Karen asked why the CRG was being informed at this meeting rather than the previous meeting if it was reported in the 2015/16 APS. Simon responded that the results from the temperature probe investigation were not available until the end of August (after the last meeting) and this data had confirmed the hot spot.

Harry felt that waiting until the next meeting in December to get an update on the subsurface hot spot was too long and that a special meeting should be held in 3-4 weeks time to provide an update.

*Action M20-7.5 Simon to schedule a meeting in 3-4 weeks time for any interested and available CRG members to further discuss the hot spot.*

#### *7e Groundwater*

Simon tabled some groundwater concentration plots for total dissolved solids, alkalinity, iron, manganese, ammonia and nitrogen to show the changes in concentration across the monitoring bore network. Harry requested groundwater quality data also be supplied in tabulated form.

*Action M20-7.6 Simon to circulate tabulated groundwater data*

#### *7f Rehabilitation*

Simon indicated that as a result of the discussion at the last meeting and other considerations the phytocap trial would be incorporated into the complete capping of Cells 1B, 2A, 2B and 3 rather than waiting until the results from a small trial (minimum three years) were known. This would have a number of benefits in reducing leachate generation and landfill gas emissions more quickly. Due to the time to run the trial and determine if a phytocap would be suitable for future cells, Simon indicated he would proceed with the implementation of a conventional cap on Cells 4A and B (and 4C when filled).

#### *7g Landscaping*

Simon advised that revised landscape plans had been prepared and these were tabled. However, due to time constraints these were not discussed. Consideration of the landscape plans will be held over until the December meeting.

### **8. Members report back and Questions**

There were no additional questions raised.

### **9. Communications**

No items were discussed.

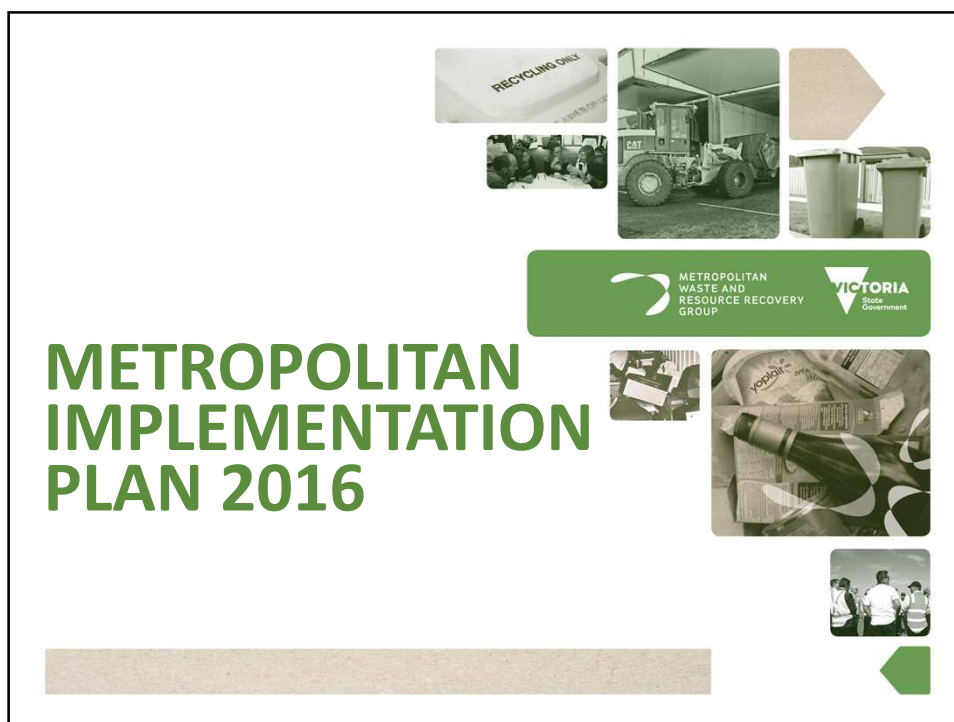
### **10. Other business**

Simon issued an open invitation to CRG members to arrange a site visit direct with him, if they would like to visit the RDF.

## **11. Next meeting**

The next meeting was scheduled for 4.30 to 7pm on Thursday 15 December 2016 (note earlier scheduled start time).

The Meeting closed at 7:30 pm



## A step change for Melbourne

- The Metropolitan Implementation Plan is about **creating value from waste**, building new industries and new jobs
- The Plan will **boost recycling** levels with new technologies and will **minimise waste** sent to landfill





## What is the case for change?



METROPOLITAN  
WASTE AND  
RESOURCE RECOVERY  
GROUP


VICTORIA  
State Government


## Population growth

  
2015 | 4.4m

  
2051 | 7.7m

Population

  
2015  
10.4 million tonnes

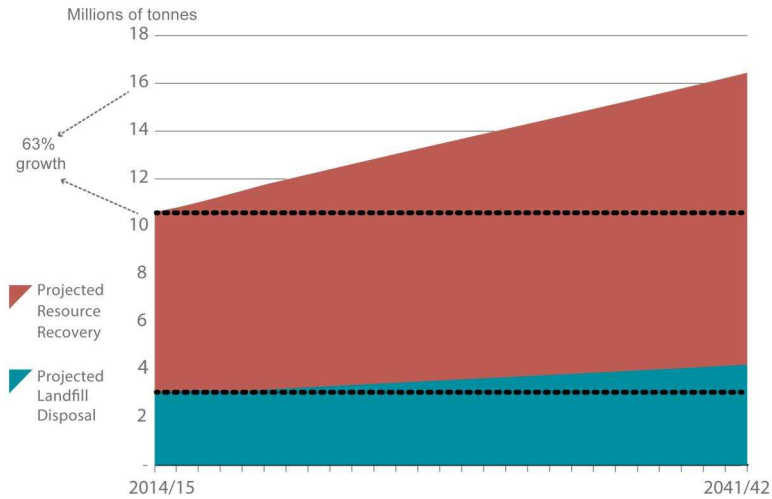
  
2042  
16.5 million tonnes

Waste

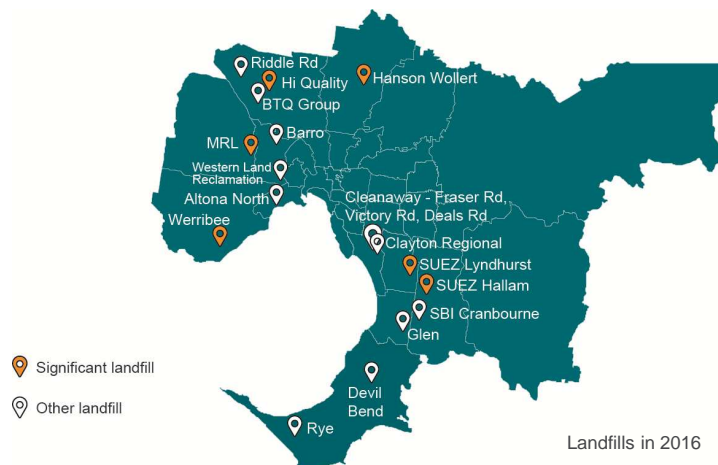
METROPOLITAN  
WASTE AND  
RESOURCE RECOVERY  
GROUP

VICTORIA  
State Government

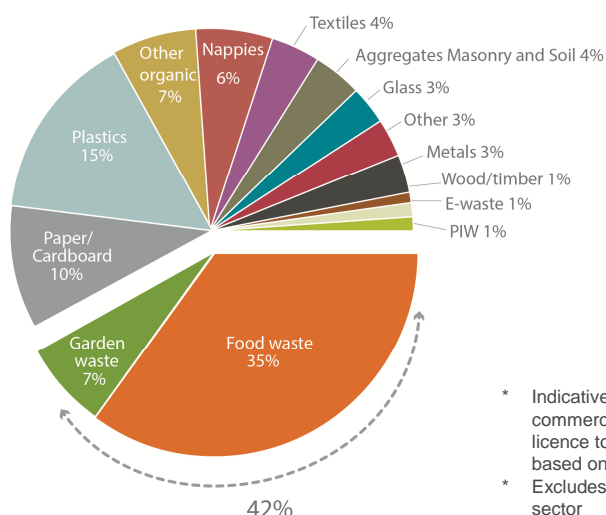
## Resource recovery is a priority



## Changing landfill network



## Opportunities



\* Indicative composition of municipal and commercial waste entering landfills licence to receive putrescible waste, based on 2014 audits

\* Excludes construction and demolition sector



## Melbourne is ready for change

- Market Assessment – over 60 submissions, significant interest in resource recovery
- Local Government – a strong commitment to maximising recycling
- Community – strong support to increase recycling, to move away from landfills, and to use advanced technologies



## The vision



## Strategic Objectives



Reduce waste  
sent to landfill



Increase organic  
waste recovered



Deliver community,  
environmental &  
economic benefits



Plan for Melbourne's  
growing population



## Less waste to landfill

- Around 3.3 million tonnes of waste projected to be landfilled each year by 2026 (increase of 500,000 tonnes from 2016)
- New infrastructure scheduled -with 500,000 annual tonnes capacity - to keep this growth out of landfills:
  - sorting facilities
  - advanced resource recovery technologies
  - Commercial and municipal food & green processing
- No new landfills scheduled

### Outcomes by 2026

- 25% of municipal residual waste is recovered
- 25% increase in recovery of priority materials (commercial)
- All councils have higher diversion rates
- Increase in diversion rates from RRC/TS

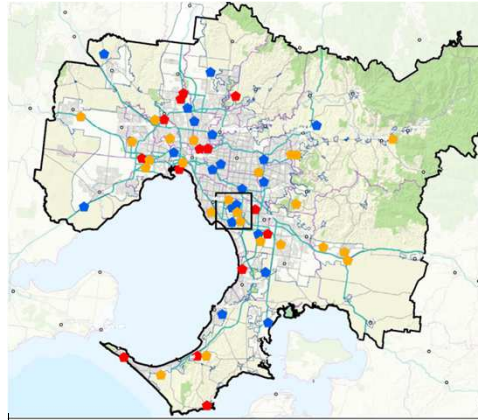
Others are listed in the plan



## Melbourne's landfills in 2026



## Resource Recovery Centre/Transfer Stations



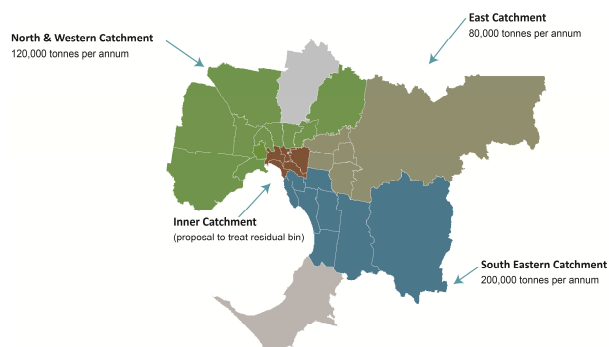
- A network of facilities managing around 1.8 million tonnes annually
- Increased sorting and recycling occurring at all facilities
- New facilities in the south east to reduce burden on Melbourne's north west
- Transfer Station Growth Strategy to drive future direction

Drop off facility  
Resource recovery centre  
Transfer station

(Currently 59 facilities, mix of local government and commercial ownership)



## More organics recovered



### Outcomes by 2026

- 600,000 tpa of food and garden waste processing capacity
- More councils collecting food & green
- Minimal contamination
- More households using council's organic collections

Others are listed in the plan



## Community, environmental and economic benefits delivered

- Encourage best practice and continuous improvement in operations
- Effective community engagement
- Support *Victorian Waste Education Strategy* (social licence to operate)



### Outcomes by 2026

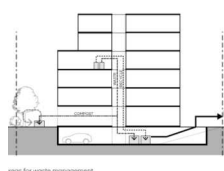
- WRR network – going beyond compliance
- Increase in awareness and engagement with WRR services and facilities
- Best practice litter prevention

Others are listed in the plan



## Long term planning considers WRR

- WRR needs are integrated in land use, development, transport, infrastructure planning
- Sufficient landfill capacity for contingency needs
- Review the pipeline of new RR infrastructure in response to the plan in 2019



### Outcomes by 2026:

- Site plans for hubs of state importance
- Buffer protection measures include in VPP
- 95% all new MUDs accommodate resource recovery collections

Others are listed in the plan



## More information

For more information on the plan, go to

[www.mwrrg.vic.gov.au](http://www.mwrrg.vic.gov.au)

- Metropolitan Implementation Plan
- Response to comments
- Snapshot: Metropolitan Implementation Plan
- Key data: Metropolitan Implementation Plan

