

Contents



Locally-Focused:
An Introduction
to Districts



Who Lives in
Wyndham East:
Demographic
Profile



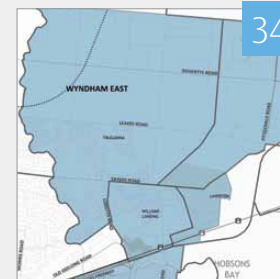
Strengths-Based:
Community Assets



Community-Driven:
Working Together



District Priorities



Planned
Developments
2015-2019

Planning for the future is not easy.
The world can change fast.

Wyndham 2040 provides a direction for what we want Wyndham to be like in the future. It provides a guide for working together on what's important.

We had lots of conversations with the community at a host of different community events, festivals and functions over the first six months in 2015. Those conversations helped shape a 2040 vision.

This district plan represents the first steps in the journey towards that vision. It outlines what will be done in Wyndham East over the next four years.

Locally-Focused: An Introduction to Districts

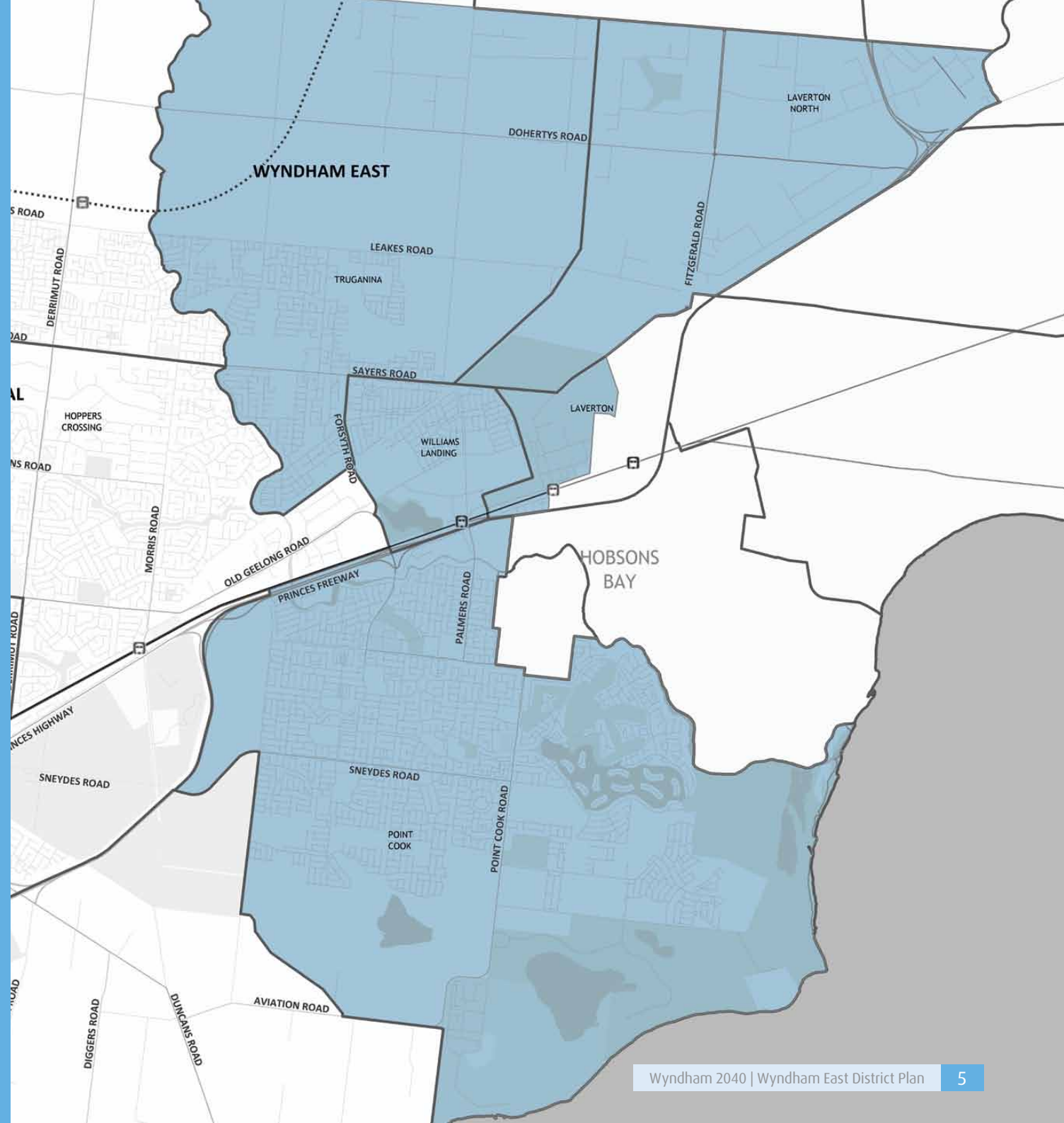


Wyndham City Council is taking a more locally-focused approach to planning by working at a district level. Districts are one way of thinking about Wyndham as a whole which will change how Council and community work together to realise the future of the city.

By grouping neighbouring suburbs together and planning for smaller areas, Council is better placed to partner with residents in identifying the needs of individual communities. Partnerships across districts help to address common issues.

District partnerships are valuable as they empower communities to support each other by sharing their skills, knowledge and strengths. This creates opportunities to work together in achieving shared goals and builds confident and independent neighbourhoods in the process.

Wyndham East is made up of the suburbs of Point Cook, Williams Landing, Truganina and Laverton North.



Who Lives in Wyndham East: Demographic Profile

About Wyndham East

Wyndham East is made up of Point Cook, Williams Landing, Truganina and Laverton North.

In 2011 nearly 45,000 people lived in Wyndham East, which represented 27% of the Wyndham population and made it the third largest district area in Wyndham.



31% of Wyndham East's population were born in non-English speaking countries

Fewer Wyndham East residents travel to work by car than other districts

This number has increased by **8,200** since 2006

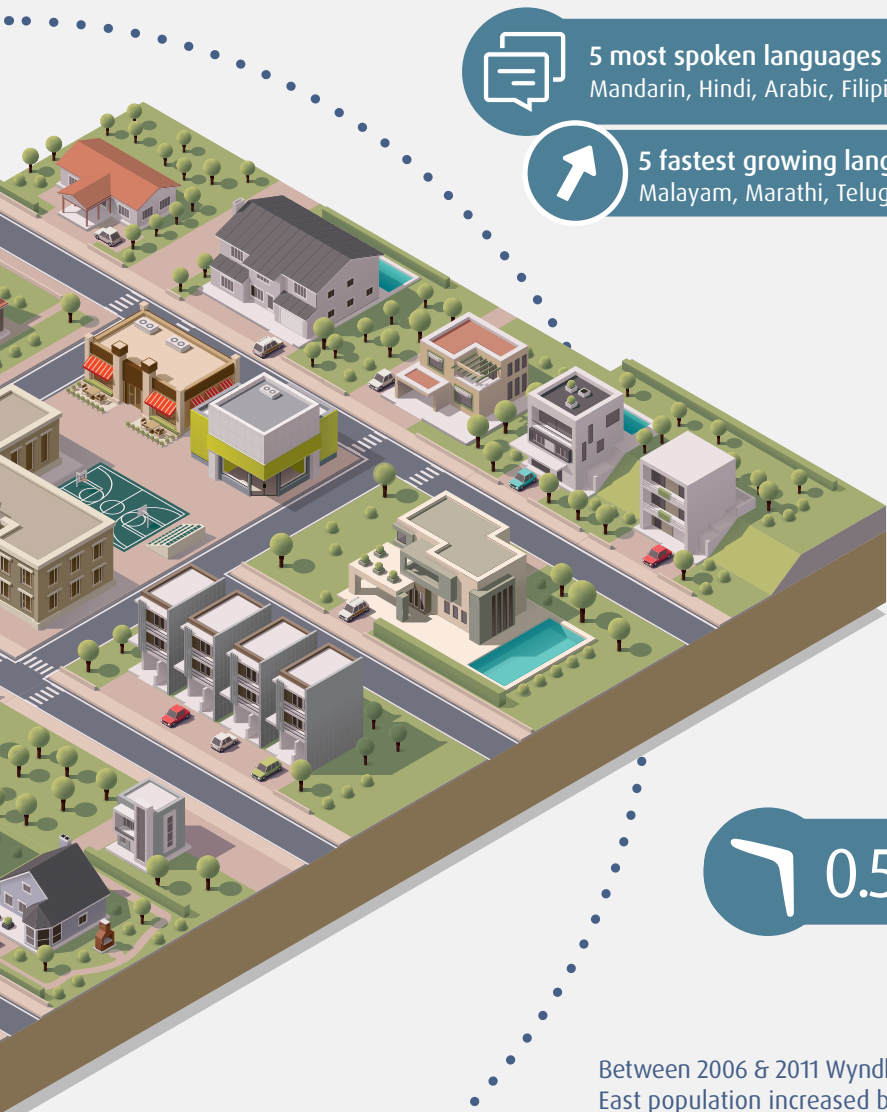
15% of Wyndham East residents obtained a VCE or VCAL in 2011

Over **30%** of residents held a degree. The largest in Wyndham

53% of Wyndham East residents are homeowners

45% of Wyndham East people live in households as couples with children. **This is the highest in Wyndham**

• Australian Bureau of Statistics, Census of Population & Housing 2006 and 2011.
• ID Consulting, 2014 Based Wyndham Population and Household Forecasts.



5 most spoken languages other than English
Mandarin, Hindi, Arabic, Filipino/Tagalog, Punjabi



5 fastest growing languages other than English
Malayam, Marathi, Telugu, Kannada, Nepali



Religious Diversity in Wyndham East

Top Five Faiths

- Catholic
- Anglican
- Hinduism
- Islam
- Eastern Orthodox

Fastest Growing Faiths

- Other Christian
- Latter-day Saint
- Sikhism
- Judaism
- Hinduism



0.5% of the Wyndham East population are Indigenous

Between 2006 & 2011 Wyndham East population increased by **250%**



13% of the Wyndham East population is aged between 0 and 4 years

The future of Wyndham East

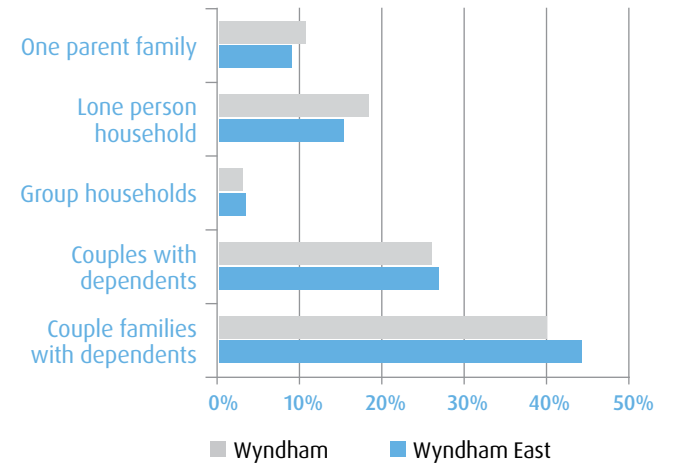
By 2036 0-4 years is projected to be the largest age group in Wyndham East



Number of over 75s is projected to increase by **900%**



Between 2011 and 2036 Wyndham East is projected to have an additional **68,000** people **(+148%)**



Strengths-Based: Community Assets





Strengths-Based

In preparing this district plan, the Wyndham 2040 project team worked to build a better understanding of community strengths by finding out:

- What people liked about Wyndham;
- What community members were good at; and
- The strengths of the people and places in the community.

Community builder and academic John McKnight (2013) wrote, “If you and the other neighbors know of each other’s gifts, new community possibilities

emerge.” He went on to say, “By recognizing our individual gifts capacities and skills, we can see that the neighborhood is a treasure chest. By putting the gifts together in many different ways, we open with the chest and use its riches.”

This thinking is behind an approach to planning that makes best use of what everyone in the community can do and provides a place for individuals, groups, organisations, institutions and government to make a contribution.



Sense of Community

Wyndham East is welcoming and inclusive. It is a place where people know their neighbours and everybody pitches in and helps out. Local groups, clubs and events are important to the community as a way of meeting people and making new friends.

“The community in Point Cook always bands together to help others in need, whether its fundraising for sick children, bereavement, clothes or furniture donation, nothing is too big or too small for this community to help.”

“There is a strong sense of community with lots of sporting facilities, schools, local community centres, shopping centres and churches within close proximity.”

“I started a social group called “Meet up” for people to get to know each other - it has grown into a large group.”

A Community of Families

Family life is integral to people in Wyndham East, it is a place for people to bring up their children. Families here support one another. Residents place value on having a range of locally available facilities and services that cater to their needs.

“It’s a place for new families. We’ve found that we understand each other and can help each other.”

“I like playing Nerf gun in my front yard so I can scream yeah! I like going for a bike rides. I ride to school every day, it is very fresh. I also like going trick or treating with my friends on Halloween! My neighbours are awesome.”

“Wyndham has great opportunities for my children there are lots of sporting options. My daughter participates in theatre and we all enjoy the open spaces.”



Connected to Nature

What makes Wyndham East unique is its connection to the natural environment where the natural beauty of wetlands and the coastline are virtually right on the doorstep. The lakes, the beach and all the great parks and gardens provide wonderful opportunities for everyone to socialise, exercise or take a moment to relax and reflect.

“I like Wyndham because it’s open; it’s rural but close enough to the city. It feels like home. I like to walk the dogs around the lakes. You can even kayak on the lakes!”

“I remember a few times waking up early and seeing kangaroos in our backyard.”

“People old and young go to the park to meet, picnic and play together, even if they don’t come from the same country.”

A Place of Opportunity

Wyndham East is changing rapidly and the rate of growth and development represents a future filled with new opportunities and possibilities. Residents are eager to play an active role in shaping this future and work towards a diverse local economy which is both attractive to emerging industries and accessible to local entrepreneurs.

“In the future Wyndham will attract innovative knowledge driven businesses which maintain close, mutually beneficial relationships with established research and educational institutions. It will focus on providing incubation and collaboration spaces for small, local companies and innovators”

“My vision for Wyndham in 2040 would be a place where my daughter is happily living as part of a vibrant community that provides everything that she needs to achieve her potential and encourages her to actively pursue her life goals.”

“I get to attend Council gatherings in this area and I’m so happy that as a new member of the community, I feel important and I can freely express my ideas that could be of help to the community.”

“ I love discovering new places in Wyndham, things change all of the time and there are always new things to see and do. I love finding new places to eat, new places to walk and I also love watching our community change and grow. I am currently teaching my niece to drive and we love going out and discovering new roads and communities, we always find somewhere new to stop for lunch in our adventures. ”



Culturally Diverse and Inclusive

The diversity of Wyndham East makes it a vibrant place. All the different cultures share their customs through activities, festivals and events which bring people together to share food and stories. It is a welcoming and accepting place where people seek to live, work and socialise as one community.

“My Wyndham City is a diverse community. We are all distinct from each other; different cultural background, different cultural values, skills and talents. If we combine all of these cultural ingenuities and are generous with our time, talent and treasure we can achieve the Wyndham City we want to be.”

“Having so many young people around brings lots of energy into the streets! Our kids mix with people from all over the world.”

“There’s always things happening in Wyndham. It’s so multicultural and the events give you the opportunity to interact with other communities.”



“ My husband and I built our dream house here right after we immigrated to Australia. It’s big and new with a beautiful garden which we could create to our taste. We both love the open area in Wyndham and we especially like to take our bikes and explore Point Cook along the bike roads. We also like Presidents Park in Werribee; we would take our kids and meet friends there. It’s a very nice place to BBQ with a huge playground and we love to explore national fauna there. We also love Point Cook coastal park and Werribee South to spend a day with family and friends. ”



Community-Driven: Working Together

Community-Driven

This plan was put together by collecting 2,040 stories and a range of other local data. The main themes were reinforced at district workshops where residents and Council worked together to develop priorities for the next 4 years.

Council's role is to plan for the future by reaching agreements with external organisations and State and Federal Government to ensure we have the funding and resources required to continue to develop local infrastructure and services.

However, Council cannot do this work alone. Many of the challenges ahead will require Council and community to work together to build stronger neighbourhoods and develop local responses.

John McKnight, often referenced as the founder of the asset based community development approach, outlined some key characteristics of successful community-led action (Russell, 2009).

These include:

- A long term vision;
- Always widening who is involved in helping to plan;
- Developing new ways to connect people; and
- Having small grants for individuals to do things in their neighbourhood.

Wyndham 2040 has aimed to develop or emphasise these types of opportunities as a part of implementing a strengths based approach to planning.

Reporting on actions in this plan will be supported by the establishment of District Advisory Committees. Going forward there will be more ways for members of the community to shape and influence local actions.



District Priorities

The following pages detail the actions that we will take over the next 4 years to work towards making the 2040 vision a reality.

Like most planning documents this district plan does not capture the complete work of Council or the community. Its purpose is to make more visible some of what is happening and invite more people to the cause of building great neighbourhoods.



Transport

Wyndham's transport system will be efficient. People will be able to move around Wyndham easily. There will be more ways to connect to greater Melbourne.

Our Goal

Improve the ability of residents to move within and outside Wyndham using a variety of transport modes.

Who We Work With

- State Government
- Federal Government
- VIC Roads
- Public Transport Victoria
- Local Developers
- Local Schools
- Local Residents
- Local Resident's Groups such as Point Cook Action Group and Truganina Community Group

What Council Will Do

1. Advocate for infrastructure developments to improve public transport services and ease road congestion.
2. Advocate for increased car and bike parking at Williams Landing station.
3. Increase foot and bike path coverage by connecting the Skeleton Creek Trail at Princes Freeway.
4. Extend Fonego Drive to connect with Point Cook Road and upgrade signals at intersection of Saltwater Promenade and Point Cook Road.
5. Implement the Active Travel Around Schools project.
6. Develop, review and implement the Wyndham Integrated Transport Strategy.

Examples of Community-Led Action

- Develop partnerships between Wyndham resident's groups to advocate for whole of Wyndham issues like transport.
- Harness the strengths of resident advocacy to develop community-led campaigns.
- Provide regular feedback to public transport providers on their service.

What it Will Look Like

- Increased connectivity to West Gate Freeway
- Extended bicycle and footpath network.
- More people walking and cycling.
- New strategies for improving transport.
- Ongoing conversations about our transport needs.





Education and Training

Wyndham will be known for great schools and universities. There will be lots of ways for people to learn and gain employment. Wyndham libraries will support learning for everyone. Residents will be able to share skills and build knowledge at community centres.

Our Goal

Widen the availability of quality education and training opportunities.

Who We Work With

- Local Education and Training Providers
- Community Groups and Organisations
- State Government
- Federal Government
- Local Businesses
- Local Residents
- Local Learning and Employment Network
- Social Enterprises like Migrant Hub

What Council Will Do

1. Complete construction of the Saltwater Promenade Community Centre and the Truganina South Kindergarten.
2. Advocate for Early Years Education and Early Intervention funding and local service delivery.
3. Advocate for the provision of a second senior school in Point Cook.
4. Deliver informal learning programs through Wyndham East community centres and Point Cook Library.
5. Maintain a physical and digital resource collection to support lifelong learning goals at Point Cook Library.
6. Develop, review and implement the Wyndham Learning Strategy.

Examples of Community-Led Action

- Engage new businesses and industry partners in building learning and employment pathways.
- Broker partnerships to support young people in transitioning from education to employment.
- Explore opportunities to further involve parents and families in advocacy for education pathways for young people.
- Revise and review strategic plans to support integration and alignment of services.

What it Will Look Like

- New facilities for learning.
- Funding to enhance and improve current services.
- A wide range of learning opportunities available at Point Cook Library and local community centres.
- New strategies for supporting learning.



Young People

Wyndham will be a family friendly city. Relationships between family members will be strong.

The people of Wyndham will be connected to each other. Our communities will be welcoming. We will be known for listening to and learning from the diversity of all residents.



Our Goal

Expand opportunities for young people to share and build on their life and leadership skills.

Who We Work With

- Local Schools
- Local Community Groups and Organisations
- Local Young People
- Local Residents
- Local Sports Clubs

What Council Will Do

1. Establish the Point Cook Youth Space to provide youth development and leadership opportunities.
2. Develop programs in partnership with local schools.
3. Develop local opportunities to celebrate young people.
4. Establish the Point Cook Youth Committee to provide more leadership opportunities for young people.
5. Work with local sporting clubs to increase involvement of young women in local sport.

Examples of Community-Led Action

- Explore opportunities to include young people in road safety initiatives.
- Identify opportunities to involve young people in enterprise development.

What it Will Look Like

- More places for young people.
- Strong relationships between young people, schools, parents and youth workers.
- Young people are celebrated.
- Young people participating in committees.
- New services for young people.

Community Safety



Community members will be confident and part of caring neighbourhoods.



Our Goal

Support community members to look after themselves and others.

Who We Work With

- State Government
- Federal Government
- Victoria Police
- Road Safe Westgate
- Wyndham Family Violence Committee
- Community Groups and Organisations
- Local Residents

What Council Will Do

1. Implement community education programs to increase understanding of the rights and responsibilities of community members.
2. Work with private developers to ensure adoption of safety design principles in new residential developments.
3. Support Road Safe Westgate to address road safety concerns including hooning.
4. Update parks and open spaces to ensure safe and welcoming design.
5. Support the delivery of family violence education in local schools.

Examples of Community-Led Action

- Organise a meet your neighbours event for people in your street.
- Advocate for legislative changes that provide for improved road safety.
- Host information sessions that focus on community safety or other areas of interest.
- Continue graffiti removal efforts.
- Promote awareness of emergency readiness among Wyndham's Chinese population.
- Support awareness raising of emergency ready activities for diverse Seniors groups including English, Hindi and Punjabi language speakers.

What it Will Look Like

- Urban design that supports public safety.
- Partnerships between organisations that promote safety and community.
- New projects focusing on road safety.
- More community understanding of how to respond to safety concerns.

Employment

Our city will have varied and plentiful local employment options. It will be a place of choice for businesses of all sizes and have a thriving network of small business operators.





Our Goal

New and established businesses are supported to grow and develop.

Who We Work With

- State Government
- Local Businesses
- Lead West
- Western Melbourne Regional Development Authority
- National Growth Areas Alliance

What Council Will Do

1. Promote Wyndham business prospectus “Your Business Destination”.
2. Support the development of Laverton North and Truganina Employment Precinct.
3. Support the development of the Western Interstate Freight Terminal
4. Deliver a wide range of workshops and seminars to assist small and medium sized business to grow.
5. Support the development of the Williams Landing Town Centre.

Examples of Community-Led Action

- Develop and grow inclusive networks of small business owners and entrepreneurs emphasising collaboration and co-working.
- Support the development of a culture of innovation and entrepreneurship among business leaders.
- Identify opportunities for idea incubation hubs.
- Explore and report on how other communities have developed new industries.
- Advocate for change on issues relevant to local businesses.

What it Will Look Like

- More local jobs.
- New development projects in Laverton North and Truganina Employment Precinct.
- A wide range of workshops and seminars for small business.
- Increased networking opportunities.
- More places for business and industry.

Sustainable Living



Our natural environment will be respected, preserved and protected.



Our Goal

Support initiatives that empower residents to live sustainably.

Who We Work With

- State Government
- Federal Government
- Local Businesses
- Local Developers
- Western Region Councils
- Local Residents

What Council Will Do

1. Implement strategies to reduce illegal rubbish dumping.
2. Promote use of and provide advice on the purchase and installation of solar panels.
3. Promote the rebate scheme to encourage composting.
4. Run community events and education to promote recycling.
5. Develop, review and implement the Environment and Sustainability Strategy.

Examples of Community-Led Action

- Support the translation of recycling information for less common languages represented in Wyndham.
- Engage the community to raise public awareness and increase knowledge levels of energy generation and usage and the impacts on the environment.
- Develop food events to raise awareness of local sharing economies and sustainability principles.
- Increase community understanding of “eco-actions” and promote these actions in daily life activities.

What it Will Look Like

- Increased use of solar energy.
- Increased composting in homes.
- Decrease in landfill waste.
- Decrease in illegal dumping.
- New strategies to reduce greenhouse gas emissions.



Multicultural Harmony

Wyndham will celebrate the cultural contributions and artistic expression of its people by supporting local creative talent to share stories that challenge and inspire. Our city will be a welcoming community for everyone. The Wyndham community will be known for listening to and learning from the diversity of all residents.



Our Goal

Foster an inclusive community which embraces and celebrates diversity.

Who We Work With

- Local Residents
- Local Networks
- Local Artists
- Community Groups and Organisations

What Council Will Do

1. Prioritise cultural development programs in Wyndham East community centres.
2. Support the development of cultural festivals, celebrations and exhibitions.
3. Deliver actions in the Multicultural Policy ensuring services and decision-making processes are open and accessible to all.
4. Develop a Wyndham East Advisory Committee that is representative of the diversity of Wyndham East.
5. Actively support large scale anti-racism campaigns.

Examples of Community-Led Action

- Deliver information sessions for the Pasifika community to come together, maintain culture and build local connections.
- Develop arts projects to exchange cultural understandings.
- Deliver language and culture programs that use local skills and connect communities.
- Support and mentor newly established cultural groups to engage with the wider community.
- Build partnerships with groups across Wyndham to support cultural and community development activities.

What it Will Look Like

- Multicultural exhibitions, events and programs in community spaces.
- Plain English and translated documents available.
- Participation in anti-racism campaigns.
- New strategies for supporting multiculturalism.

Parks and Open Spaces



Our parks and open spaces will connect people with the outdoors and each other. They will be activated and inviting destinations for residents and visitors.



Our Goal

Safeguard natural assets and plan for new parks and open spaces that build on Wyndham's strengths.

Who We Work With

- State Government
- Local Schools
- Local Developers
- Parks Victoria
- Local Residents

What Council Will Do

1. Work with local developers to ensure the quality of parks can be maintained in the long term.
2. Redevelop existing parks in line with the Open Space Strategy.
3. Broker agreements with local schools to increase access to sport and recreation facilities.
4. Engage the community to define the requirements for dog off lead areas that serves community needs.
5. Work with community to develop initiatives in parks.

Examples of Community-Led Action

- Develop partnerships with Council's tree planting area to support the greening of the area.
- Continue to host tree planting initiatives.
- Protect, improve and enjoy the open space in Point Cook and make residents aware of the benefits of these spaces in order to increase usage.

What it Will Look Like

- New parks and open spaces aligned with community needs.
- A wide variety of places for leisure and recreation.
- A Wyndham wide network of dog off-lead areas.
- More community activities in local parks.

Wyndham East: Planned Development

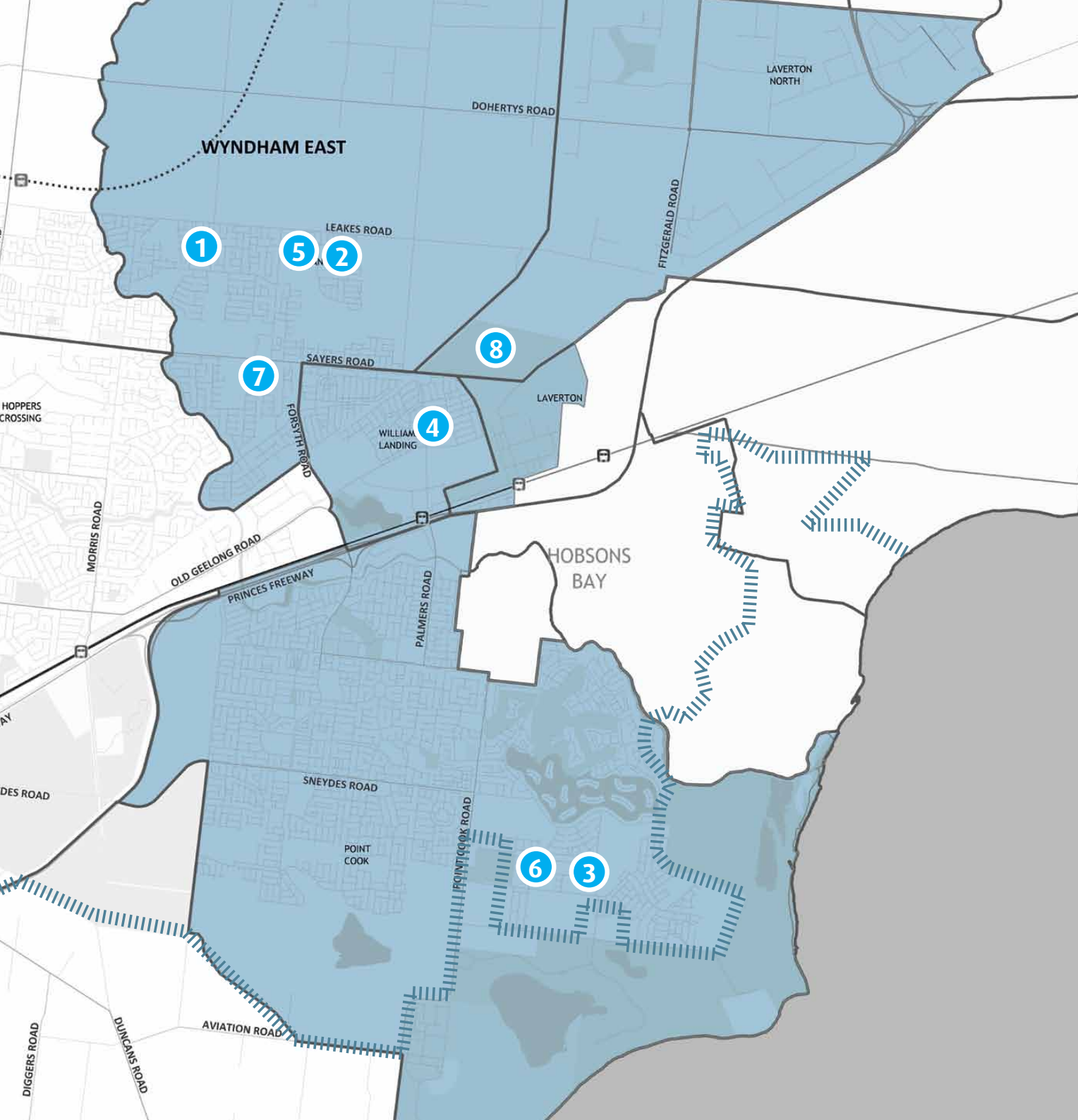
- 1 Clearwood Drive Pavilion
- 2 Mainview Boulevard Pavilion
- 3 Saltwater Promenade Community Centre
- 4 Williams Landing Pavilion Oval
- 5 Truganina South Kindergarten
- 6 Homestead Road Oval
- 7 Alison Street Park
- 8 Lawrie Emmins Reserve Motorcross Track

..... Rail

||||| Urban Growth Boundary

■ Wyndham East District





Further Information

For more information please contact:

Wyndham City

Community Planning and Development

P: 9742 0777

E: mail@wyndham.vic.gov.au

W: www.wyndham.vic.gov.au/wyndham2040

