

Wyndham Central District Plan 2015-2019

Locally-Focused - Strengths-Based - Community-Driven

Contents



Locally-Focused:
An Introduction
to Districts



Who Lives in
Wyndham Central:
Demographic
Profile



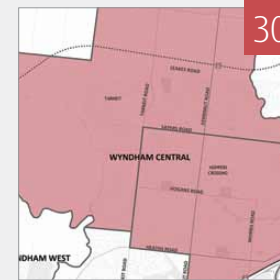
Strengths-Based:
Community Assets



Community-Driven:
Working Together



District Priorities



Planned
Developments
2015-2019

Planning for the future is not easy.
The world can change fast.

Wyndham 2040 provides a direction for what we want Wyndham to be like in the future. It provides a guide for working together on what's important.

We had lots of conversations with the community at a host of different community events, festivals and functions over the first six months in 2015. Those conversations helped shape a 2040 vision.

This district plan represents the first steps in the journey towards that vision. It outlines what will be done in Wyndham Central over the next four years.

Locally-Focused: An Introduction to Districts

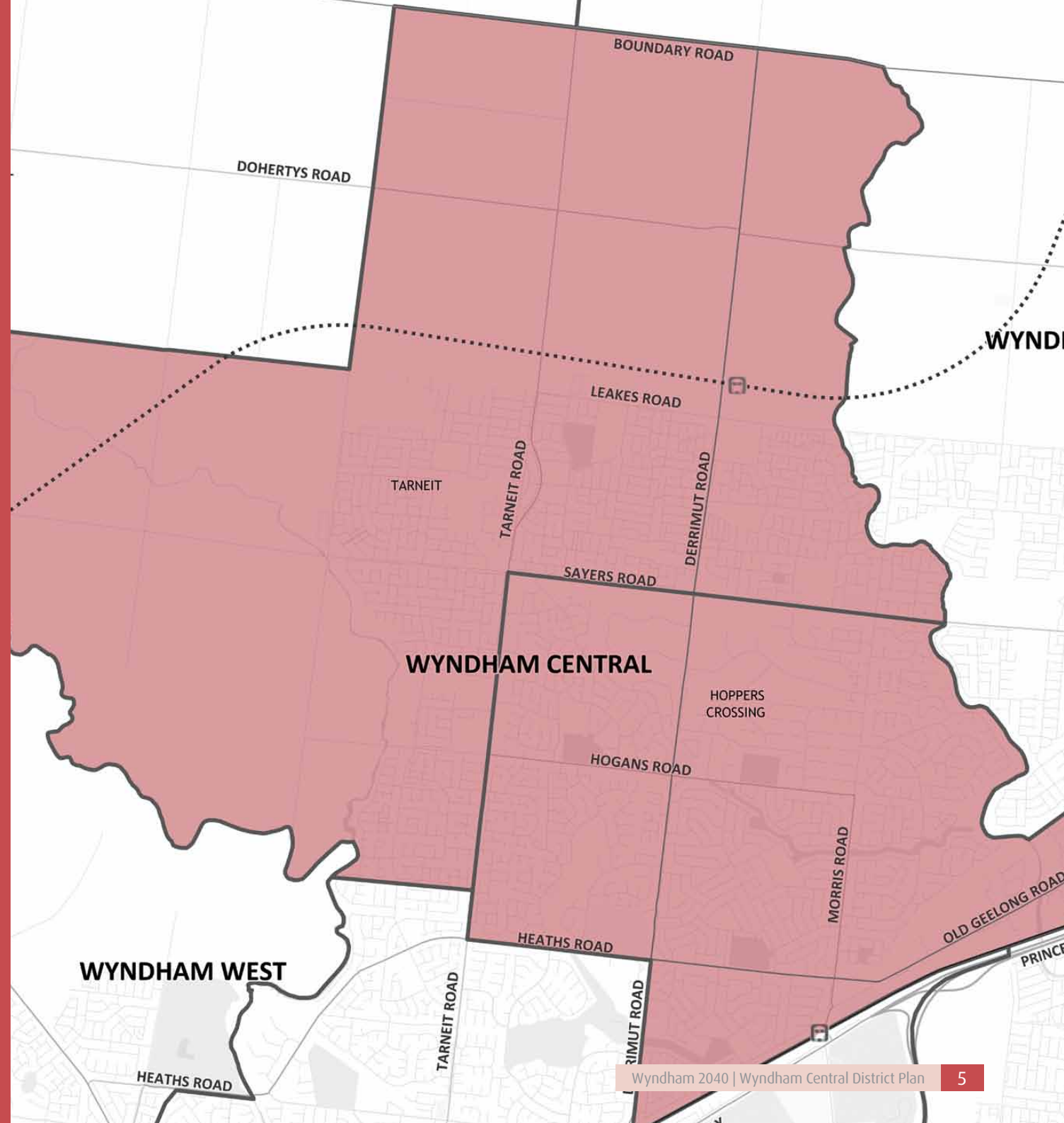


Wyndham is moving towards a more locally-focused approach to planning by working at a district level. Districts are one way of thinking about Wyndham as a whole which will change how Council and community work together to realise the future of the city.

By grouping neighbouring suburbs together and planning for smaller areas, Council is better placed to partner with residents in identifying the needs of individual communities. Partnerships across districts help to address common issues.

District partnerships are valuable as they empower communities to support each other by sharing their skills, knowledge and strengths. This creates opportunities to work together in achieving shared goals and builds confident and independent neighbourhoods in the process.

Wyndham Central is made up of the suburbs of Hoppers Crossing and Tarneit.

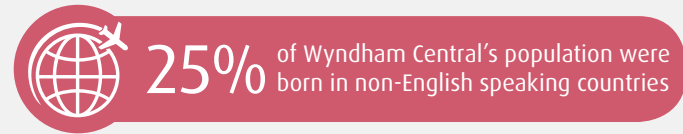


Who Lives in Wyndham Central: Demographic Profile

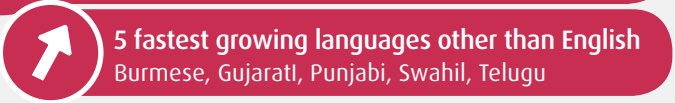
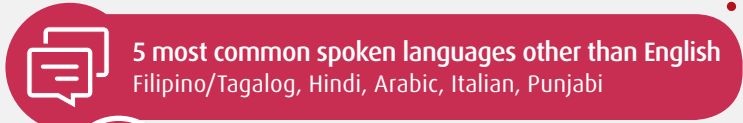
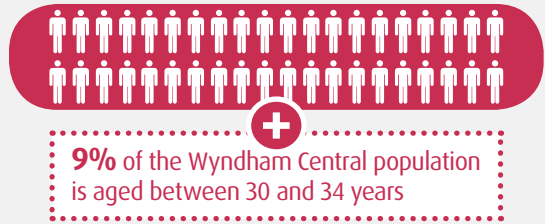
About Wyndham Central

Wyndham Central is made up of Hoppers Crossing and Tarneit.

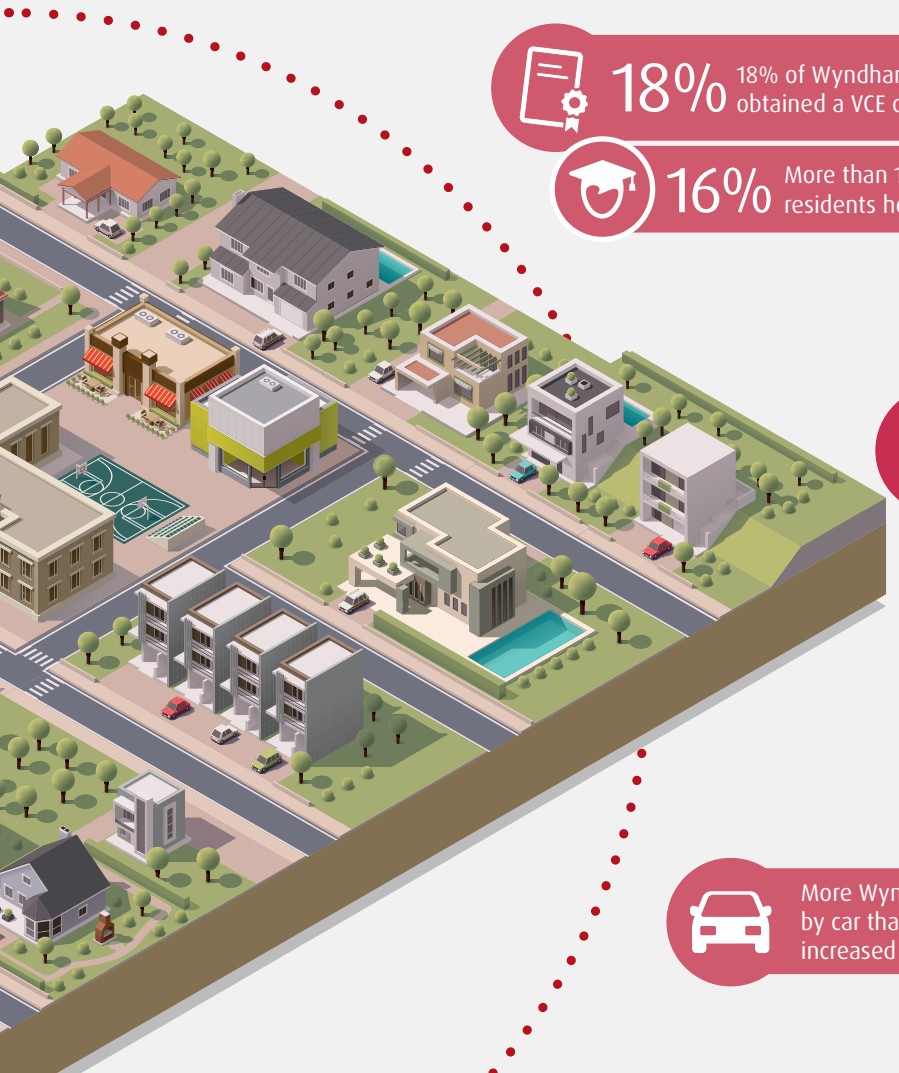
In 2011 nearly 60,000 people lived in Wyndham Central, which represented 36% of the Wyndham population and made it the largest district area in Wyndham.



Between 2006 and 2011, the Wyndham Central population increased by **24%**



• Australian Bureau of Statistics, Census of Population & Housing 2006 and 2011.
• ID Consulting, 2014 Based Wyndham Population and Household Forecasts.



18% 18% of Wyndham Central residents obtained a VCE or VCAL in 2011

16% More than 16% of residents hold a degree

Religious Diversity in Wyndham Central

Top Five Faiths

- Catholic
- Anglican
- Islam
- Hinduism
- Eastern Orthodox

Fastest Growing Faiths

- Spiritualism
- Judaism
- Eastern Orthodox
- Hinduism
- Sikhism

+ More Wyndham Central residents travel to work by car than in other districts. This number has increased by 5,000 since 2006

+ Between 2006 and 2011 the number of Wyndham Central residents renting their home increased from 16% to 20%

+ 18% of Wyndham Central residents live in households with children

The future of Wyndham Central

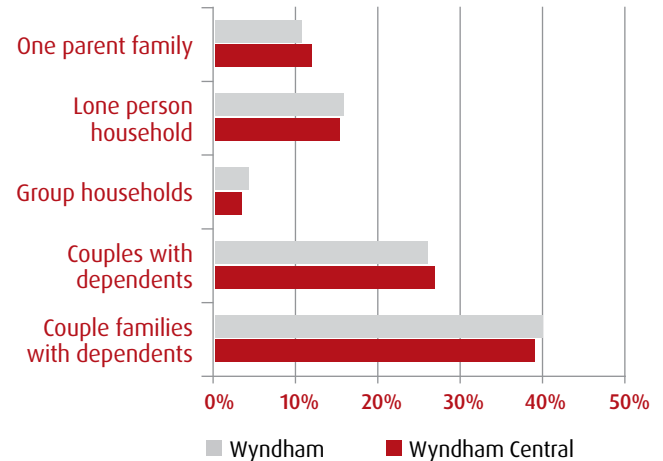
By 2036 0-4 years is projected to be the largest age group



Over 65s are projected to increase at the fastest rate



Between 2011 and 2036 Wyndham Central is projected to have an additional **42,000** people





Strengths-Based:
Community Assets



Strengths-Based

In preparing this district plan, the Wyndham 2040 project team worked to build a better understanding of community strengths by finding out:

- What people liked about Wyndham;
- What community members were good at; and
- The strengths of the people and places in the community.

Community builder and academic John McKnight (2013) wrote, “If you and the other neighbors know of each other’s gifts, new community possibilities emerge.” He went on to say, “By recognizing our

individual gifts capacities and skills, we can see that the neighborhood is a treasure chest. By putting the gifts together in many different ways, we open the chest and use its riches.”

This thinking is behind an approach to planning that makes best use of what everyone in the community can do and provides a place for individuals, groups, organisations, institutions and government to make a contribution.



Strong Local Identity

Wyndham Central has places where families have lived for many years. This personal connection weaves local history with personal experiences of growing up resulting in a broad knowledge of Wyndham as a whole. Great value is placed on local assets and people are passionate about preserving them for the future.

“My husband grew up here. He always talks about how he used to ride horses through the McDonalds drive through and how the roads were dirt. He has watched the city grow from paddocks to suburbs.”

“We have lived in the area for 34 years and raised our family here. Our children attended local schools and now so are our grand-children.”

“I love the history here, all the old buildings and my wife, kids and I love going for walks through Tarneit it’s so nice and quiet.”

A Connected Community

Wyndham Central is a welcoming place where the community supports each other. Neighbourhoods are inclusive places where difference is embraced and celebrated. Social connection is highly valued by the community and people are actively involved in programs, clubs and volunteering. Newer residents are looking to establish these types of connections quickly.

“Our daughter has started school in Hoppers Crossing and will finish school here. As this suburb grows we have seen great cultural diversity develop. Wyndham is showing the world how people can get along together.”

“I played VFL footy locally for Werribee. It has been good to be in a position to run clinics at Weerama and also at local schools as a way of connecting to the local community.”

“I am a member of the Cruzen Knights Car Club, we raise money for the Cancer Council of Victoria and Make a Wish.”

“ We live in Hoppers Crossing near the Grange Community Centre and Hoppers Crossing Football Club. I have lived in Wyndham for 22 years and I have many fond memories of this place! From the paddocks and the roads that did not join up, to the community spirit and the volunteering opportunities. Wyndham has grown and changed quickly during the time I've been here. We love all the change in Wyndham, it's changing in a good way! ”



Active Lifestyles

The people of Wyndham Central value access to nature and residents enjoy an outdoor lifestyle. The community place great emphasis on access to local parks, the river, the coastline and wetlands. People are also very involved in organised sports which are essential for social connection, health and wellbeing.

“I live in Hoppers Crossing and I work at the Goodlife gym which is also in Hoppers Crossing. In out spare time we like going the bike trails around Werribee, I love exploring the back streets on push bike.”

“When I think of the city and I drive back from there you can leave the hustle behind, there is a separation between work and home life. You can relax a lot more.”

“I enjoy walks along natural elements around Tarneit, such as Skeleton Creek and other areas that have had the natural environment revitalised with native planting and landscaping.”

Local Options

Residents feel the area provides many amenities and the needs of the community are well-catered for. The community acknowledges the work that has been done in developing services and facilities. They also recognise that local businesses have contributed to developing commercial and activity centres providing access to necessary services and diverse leisure options.

“Living here means you are far enough from the city but you don’t have to go anywhere else because Wyndham has everything. I like the beaches, parks, the cultural centre and all the entertainment and shopping.”

“We live in Tarneit but I travel to Point Cook for work at martial arts dojo and my son goes to school in Truganina so we all live work and play locally.”

“Being able to work locally which means that home is only two minutes away means a better quality of life.”

“ Wyndham has been a paramount place through-out my life, having been born and raised in the area. Throughout my schooling years I made the most of any sporting, music, volunteer and employment opportunities that were available in the area. This involvement allowed me to meet various people in and around the community forming lasting relationships. All this has given me the opportunity, to be involved in the continual growth and development of the area. Over the past 5 years I have travelled to many different countries, and on my return to Wyndham I have always felt a sense of “home” that I believe will never leave. ”



Community-Driven: Working Together

Community-Driven

This plan was put together by stories which were collected as a part of the Wyndham 2040 project. The main themes were reinforced at district workshops where residents and Council worked together to develop the priorities for the next 4 years.

Council's role is to plan for the future by reaching agreements with external organisations and State and Federal Government that ensure we have the funding and resources required to continue to develop local infrastructure and services.

However, Council cannot do this work alone. Many of the challenges ahead will require Council and community to work together to build stronger neighbourhoods and developing local responses.

John McKnight, often referenced as the founder of the asset based community development approach, outlined some key characteristics of successful community-led action (Russell, 2009).

These include:

- A long term vision;
- Always widening who is involved in helping to plan;
- Developing new ways to connect people; and
- Having small grants for individuals to do things in their neighbourhood.

Wyndham 2040 has aimed to develop or emphasise these types of opportunities as a part of implementing a strengths based approach to planning.

Reporting on actions in this plan will be supported by the establishment of District Advisory Committees. Going forward there will be more ways for members of the community to shape and influence local actions.



District Priorities

The following pages detail the actions that we will take over the next 4 years to work towards making the 2040 vision a reality.

Like most planning documents this district plan does not capture the complete work of Council or the community. Its purpose is to make more plain and visible some of what is happening and invite more people to the cause of building great neighbourhoods.



Transport

Wyndham's transport system will be efficient. People will be able to move around Wyndham easily. There will be more ways to connect to greater Melbourne.

Our Goal

Improve the ability of residents to move within and outside Wyndham using a variety of transport modes.

Who We Work With

- State Government
- Federal Government
- VIC Roads
- Public Transport Victoria
- Local Developers
- Local Schools
- Local Residents and Residents' Groups

What Council Will Do

1. Advocate for infrastructure developments to improve rail and bus services and ease road congestion.
2. Advocate for design that prioritises public transport at the upgraded Leakes and Derrimut Road intersection.
3. Advocate for improved bike and car parking at Hoppers Crossing train station.
4. Continue duplication of Tarneit Road and intersection upgrades at Sayers Road and Davis Road and Sayers Road and Leakes Road.
5. Complete new section of Forsyth Road from Leakes Road to Sayers Road.
6. Implement the Active Travel Around Schools project.
7. Develop, review and implement the Wyndham Integrated Transport Strategy.

Examples of Community-Led Action

- Develop partnerships between Wyndham residents' groups to advocate for whole of Wyndham issues like transport.
- Explore opportunities to develop car-pooling and car-sharing schemes.
- Grow participation in school active travel programs.
- Develop campaigns to promote safety for vulnerable road users such as pedestrians, cyclists and motorbike riders.
- Develop groups to promote active travel and advocate for the needs of bike users.

What it Will Look Like

- New funding for transport infrastructure.
- New services or infrastructure for transport.
- More people walking and cycling.
- New strategies for improving transport.
- Ongoing conversations about our transport needs.





Social Connection

Wyndham will be a family friendly city. Relationships between family members will be strong. The people of Wyndham will be connected to each other. Our communities will be welcoming. We will be known for listening to and learning from the diversity of all residents.

Our Goal

As our city grows it continues to develop in an inclusive and welcoming way.

Who We Work With

- Local Schools
- Local Community Groups and Organisations
- Local Residents
- Local Community Centres such as The Grange Community Centre.

What Council Will Do

1. Work with local community to develop place-based community projects.
2. Provide opportunities through neighbourhood grants for residents to launch their own social connection projects.
3. Continue building community leadership and supporting new community ideas through projects such as Building Blocks.
4. Establish the Tarneit Community Learning Centre as a mini town hall, enhancing direct customer services and engagement opportunities.
5. Provide comfortable spaces for people to meet and connect.

Examples of Community-Led Action

- Develop projects to connect neighbours and build a local sense of community.
- Develop partnership groups of community organisations to support connecting people in local communities.
- Continue to offer events and programs for older residents to meet and connect socially.
- Support social connection for migrant residents by offering opportunities for people from the same nationality to meet together.

What it Will Look Like

- A welcoming community.
- Lots of ways for people to meet each other at local community centres.
- Neighbours meeting each other and forming friendships.
- Strong relationships between neighbours.

Community Safety



Community members will be confident and part of caring neighbourhoods.



Our Goal

Support communities to be resilient and look after others.

Who We Work With

- State Government
- Federal Government
- Victoria Police
- Road Safe Westgate
- Wyndham Family Violence Committee
- Community Groups and Organisations
- Local Residents

What Council Will Do

1. Implement education programs to increase understanding of the rights and responsibilities of community members.
2. Work with private developers to ensure adoption of safety design principles in new residential developments.
3. Support Road Safe Westgate to address road safety concerns including hooning.
4. Update parks and open spaces to ensure safe and welcoming design.
5. Support the delivery of family violence education in local schools.

Examples of Community-Led Action

- Advocate for legislative changes that provide for and improve road safety.
- Organise an event as a part of Clean Up Australia Day to improve the presentation of a local park or street.
- Join or form a group focused on crime prevention and community safety.

What it Will Look Like

- Urban design that supports public safety.
- Partnerships between organisations that promote safety and community.
- New projects focusing on road safety.
- More community understanding of how to respond to safety concerns.



Healthy Living

Wyndham residents will have opportunities to stay fit and healthy. Services for health will be easily accessed and delivered at a high standard.



Our Goal

Community education, services and recreation facilities support residents to lead healthy lifestyles.

Who We Work With

- Local Health and Wellbeing Providers
- Western Leisure Services
- Local Developers
- Local Residents
- Local Sports Clubs

What Council Will Do

1. Work with local developers to ensure neighbourhood design supports walking and cycling.
2. Develop new health and wellbeing programs in partnership with community centres and sports clubs.
3. Complete the second stage of the Tarneit Pipetrack Trail to improve cycling and pedestrian connections.
4. Commence feasibility and concepts of new indoor recreation centre at 1160 Sayers Road.

Examples of Community-Led Action

- Explore opportunities for peer-led exercise groups.
- Promote walking and cycling as transport options for short trips.
- Join a local sports club or suggest an alternative sport that might draw in new people.

What it Will Look Like

- New sports, recreation and leisure facilities;
- More people walking, cycling and playing sport.
- More health and wellbeing programs and providers.
- More people being physically active.

Employment



Our city will offer varied and plentiful local employment options. It will be a place of choice for businesses of all sizes and have a thriving network of small business operators.



Our Goal

New and established businesses are supported to grow and develop.

Who We Work With

- State Government
- Local Businesses
- Lead West
- Western Melbourne Regional Development Authority
- Local Learning and Employment Network
- National Growth Areas Alliance
- Pacific Werribee

What Council Will Do

1. Promote Wyndham business investment prospectus “Your Business Destination”.
2. Support the development of Pacific Werribee as a regional shopping destination.
3. Support the development of Laverton North and Truganina Employment Precinct.
4. Support the development of the Western Interstate Freight Terminal
5. Deliver a wide range of workshops and seminars to assist small and medium-sized business to grow.
6. Establish a co-working space at Tarneit Library to support commuting workers and small businesses.

Examples of Community-Led Action

- Start a small business owners network to share knowledge, experience and skills.
- Create a local directory of small business to encourage people to shop locally.
- Develop and grow inclusive networks of small business owners and entrepreneurs emphasising collaboration and co-working.
- Broker partnerships to support people in transitioning from education to employment.
- Identify opportunities for young people to develop careers in the aged care sector.

What it Will Look Like

- More local jobs.
- New development projects in Laverton North and Truganina Employment Precinct.
- A wide range of workshops and seminars for small business.
- Increased networking opportunities.



Education and Training

Wyndham will be known for great schools and universities. There will be lots of ways for people to learn and gain employment. Wyndham libraries will support learning for everyone. Residents will be able to share skills and build knowledge at community centres.



Our Goal

Widen the availability of quality education and training opportunities.

Who We Work With

- Local Education and Training Providers
- Community Groups and Organisations
- State Government
- Federal Government
- Local Businesses
- Local Residents
- Local Learning and Employment Network

What Council Will Do

1. Establish the Tarneit Library.
2. Advocate for Early Years Education and Early Intervention funding and local service delivery.
3. Deliver informal learning programs through Wyndham Central Community Centres and Tarneit Library.
4. Maintain a physical and digital resource collection to support lifelong learning goals at Tarneit - Plaza Libraries.
5. Convene discussions about the provision of local university and TAFE options with key stakeholders.
6. Develop, review and implement the Wyndham Learning Strategy.

Examples of Community-Led Action

- Continue to offer a wide range of children's educational programs at local community centres.
- Explore opportunities to further involve parents and families in advocacy for education pathways for young people.
- Revise and review education and training strategies to support integration and alignment of services.

What it Will Look Like

- New facilities for learning.
- Funding to enhance and improve current services.
- A wide range of learning opportunities available at Tarneit and Plaza Libraries and local community centres.
- New strategies for supporting learning.

Volunteering



Wyndham will have a variety of ways for community members to volunteer in support of others.



Our Goal

Build new relationships which result in volunteering opportunities.

Who We Work With

- Local Residents
- Local Community Groups and Organisations
- Volunteer West
- Local Service Clubs like Wyndham Rotary and Hoppers Crossing Apex

What Council Will Do

1. Develop a Volunteering Strategy to include new ways to volunteer.
2. Continue to raise the profile of volunteering in Wyndham.
3. Deliver the Community Training Calendar to support volunteer organisations.
4. Create new volunteer-led programs with community.
5. Provide networking opportunities for people interested in volunteering and leadership.

Examples of Community-Led Action

- Expand and promote the range of volunteer opportunities available at local community centres.
- Promote opportunities with community organisations and community centres for volunteering.
- Promote the activities and volunteering opportunities of service clubs.
- Help form links between service opportunities and community members, especially for events and projects.

What it Will Look Like

- New ways to volunteer.
- More people volunteering.
- More people and organisations working together on new ideas.
- Better understanding of how to volunteer.

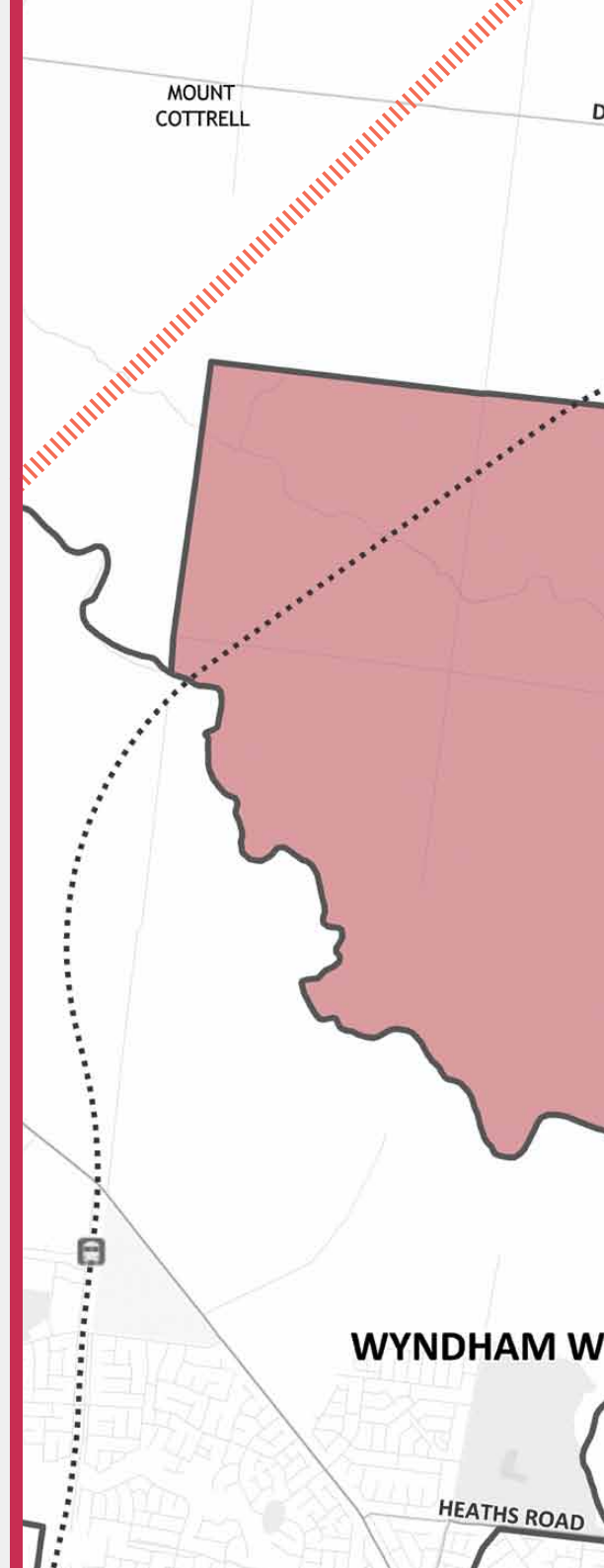
Wyndham Central: Planned Development

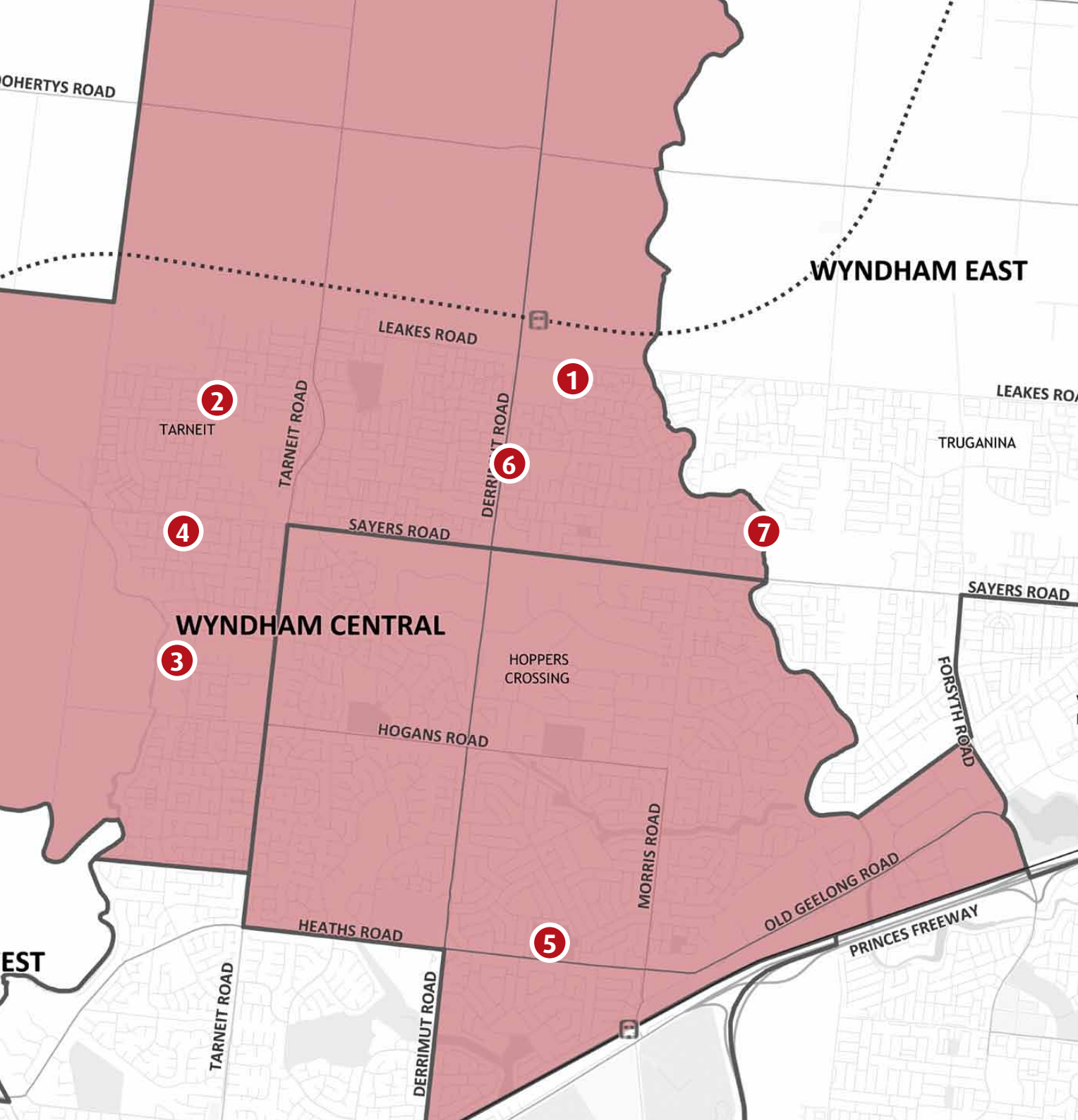
- 1 Tarnet Library
- 2 Hummingbird Boulevard Pavilion
- 3 Davis Creek Kindergarten
- 4 Tarneit North Community Centre
- 5 Mossfiel Reserve Renewal
- 6 Baden Powell Reserve Development
- 7 Skeleton Creek Bridge at Talliver Terrace Park

..... Rail

||||| Urban Growth Boundary

Wyndham Central District





Further Information

For more information please contact:

Wyndham City

Community Planning and Development

P: 9742 0777

E: mail@wyndham.vic.gov.au

W: www.wyndham.vic.gov.au/wyndham2040

