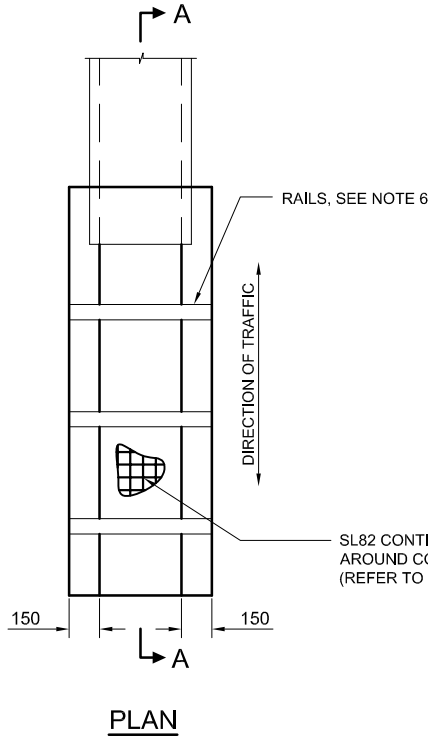
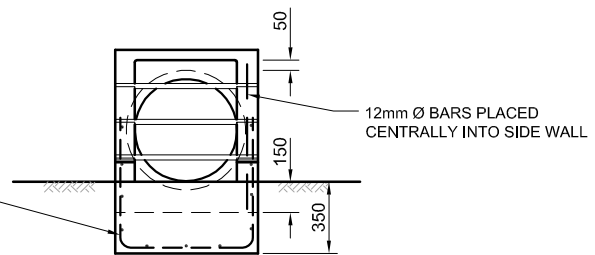


**SECTION A-A**



**PLAN**

L (mm)	TOTAL NUMBER OF RAILS
100 - 600	1
601 - 1200	2
1201 - 1800	3
1801 - 2400	4



**END ELEVATION**

**NOTES:**

1. REINFORCEMENT, SL82 UNLESS OTHERWISE SPECIFIED, TO BE CONTINUOUS AROUND CORNERS AND LOCATED AS SHOWN. CLEAR COVER 50mm MIN. LAPS: FABRICS 300mm MIN BARS 25mm x BAR DIAMETER MIN.
2. DISTRIBUTION BARS 12mm Ø AT 200mm CENTRES.
3. CONCRETE TO BE NORMAL-CLASS N32 STANDARD STRENGTH GRADE OR HIGHER COMPLYING WITH THE REQUIREMENTS OF AS 1379. EXPOSURE CLASSIFICATIONS UP TO AND INCLUDING B1.
4. EXPOSED EDGES TO HAVE 20mm x 20mm CHAMFERS.
5. RAILS WITHIN LENGTH "L" SHALL BE EVENLY SPACED. THE MAXIMUM SPACING SHALL NOT EXCEED 600mm.
6. RAILS ARE 60.3mm DIAMETER GALVANISED TUBES 5.4mm THICK. THESE ARE TO BE GROUTED INTO THE SLOTS IN THE WALLS.
7. SLOPE OF ENDWALL TO MATCH BATTER SLOPE. MAXIMUM SLOPE 1IN 6.
8. ENDWALLS TO BE CONSTRUCTED IN ACCORDANCE WITH THE RELEVANT PROVISIONS OF AS 3600.
9. CONCRETE STRENGTH OF 25MPa AT 28 DAYS.

Drawing name: I:\Roads Shared\Standard Drawings May 2009\AutoCad Version\SD6-14.dwg (09 Dec, 2009)

Rev	Amendments	Approved	Date
B	Minor Drafting Modifications, deleted note 8		16-05-07
C	Minor Drafting Modifications		09-12-09



**DRIVEABLE CULVERT ENDWALL**  
(PIPE CULVERTS UP TO 600mm Ø AND BOX CULVERTS UP TO 600mm Ø WIDE)

Engineering Services Approval No.: ES001 Date: 21/05/09

Cad File: SD6-14.DWG

Drawn Date: 02/02/09

Revision: C

Drawing No.

**SD6-14**

**GENERAL NOTES:**  
 -DRAWINGS ARE NOT TO SCALE.  
 -ALL MEASUREMENTS ARE IN MILLIMETERS UNLESS OTHERWISE STATED.  
 -FOR UP TO DATE DRAWINGS PLEASE CHECK WYNDHAM CITY COUNCIL WEB SITE.  
 -ALL STANDARD DRAWINGS TO BE USED IN CONJUNCTION WITH SD1-1 (STANDARD DRAWINGS CONDITIONS OF USE).