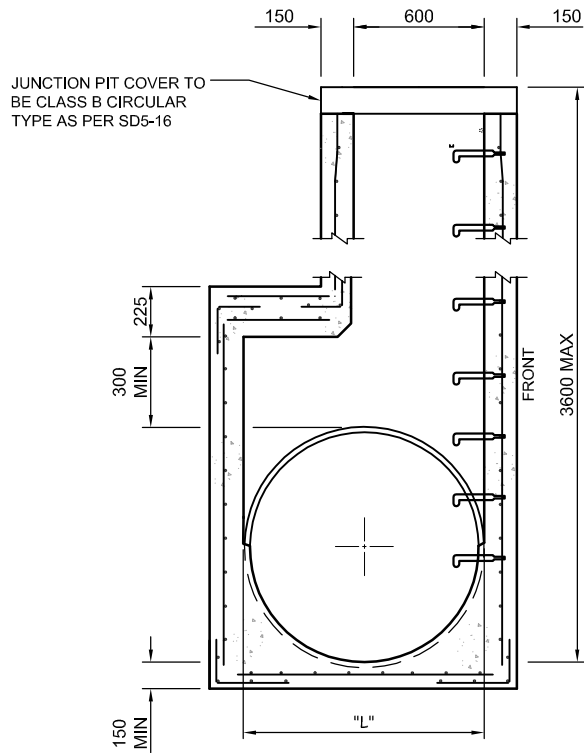


SECTION A - A



SECTION B - B

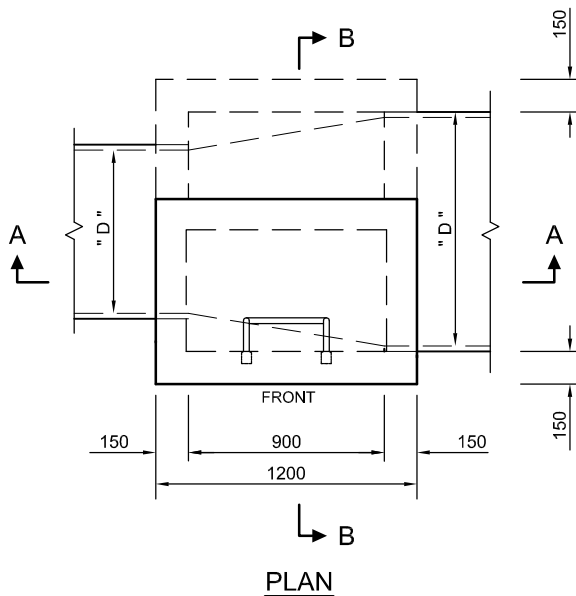
JUNCTION PIT COVER TO BE CLASS B CIRCULAR TYPE AS PER SD5-16

PIT LENGTH "L"	REINFORCEMENT
UP TO 1200	SL 92
1201 - 1800	RL 918
1801 - 2400	RL 1218

REINFORCEMENT DETAILS

NOTES :

1. JUNCTION PITS LOCATED WITHIN 1m OF VEHICLE CROSSINGS OR WITHIN ROAD PAVEMENTS TO HAVE CLASS D PIT COVER AS PER SD5-16.
2. PITS DEEPER THAN 1000mm TO BE FITTED WITH STEP IRONS IN ACCORDANCE WITH SD5-7.
3. SEE ALSO HAUNCHED PIT DETAILS.
4. ALLOWANCE TO BE MADE FOR SUB-SURFACE DRAINS AS SPECIFIED.
5. REINFORCEMENT TO HAVE 50mm CLEAR COVER.
6. REFER TO SD5-10 & SD5-11 FOR REINFORCEMENT DETAILS.
7. FOR TOP OF PIT DETAILS, REFER TO PIT SCHEDULE AND RELEVANT STANDARD DRAWINGS.
8. COUNCIL APPROVAL MUST BE OBTAINED FOR THE USE OF PRECAST PITS.
9. CONCRETE STRENGTH OF 25MPa AT 28 DAYS.



PLAN

Drawing name: I:\Roads Shared\Standard Dwg Review 2007\SD5-9.dwg (22 May, 2009)

Rev	Amendments	Approved	Date
B	Minor drafting modifications		28-05-07



STORM WATER JUNCTION PIT FOR PIPES OVER 600mm DIAMETER AND 3600mm MAX DEPTH		Cad File : SD5-9.DWG
		Drawn Date : 02/02/09
Engineering Services Approval No. : ES001		Revision : B
Date : 21/05/09		Drawing No. SD5-9

GENERAL NOTES:

- DRAWINGS ARE NOT TO SCALE.
- ALL MEASUREMENTS ARE IN MILLIMETERS UNLESS OTHERWISE STATED.
- FOR UP TO DATE DRAWINGS PLEASE CHECK WYNDHAM CITY COUNCIL WEB SITE.
- ALL STANDARD DRAWINGS TO BE USED IN CONJUNCTION WITH SD1-1 (STANDARD CONDITIONS OF USE).