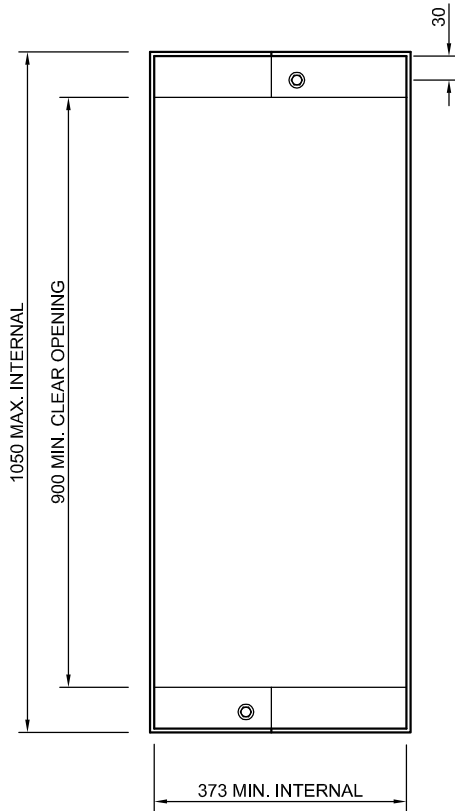
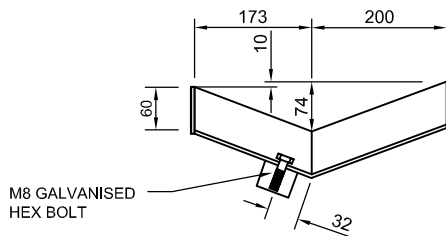
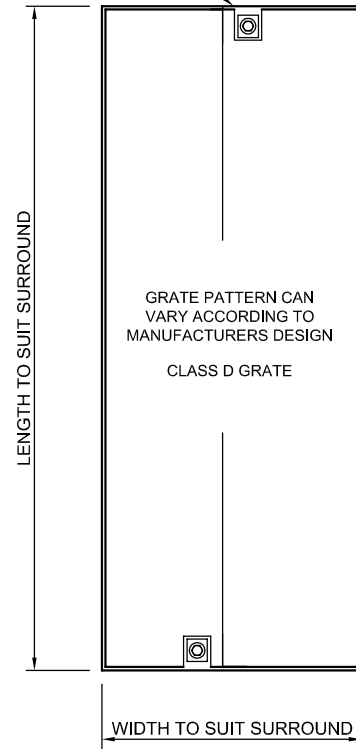


GRATE SURROUND

GRATE LID



PROVISION FOR M8 HEX BOLT



SECTION THROUGH SURROUND

NOTES:

1. GRATE PATTERN IS TO BE DESIGNED BY MANUFACTURER TO FIT THE FRAME.
2. GRATE TO BE BIKE SAFE, LOCK DOWN AND HOT DIP GALVANISED.
3. GRATE TO BE CLASS D IN ACCORDANCE WITH AS 3996.
4. APPROVED GRATES TO BE USED ONLY AFTER SUBMISSION OF POSITIVE RESULTS FROM NATA APPROVED TESTERS (ONLY GRATES THAT HAVE BEEN PREREGISTERED TO BE USED).
5. FOR PRE APPROVED GRATES REFER TO SD5-18A.
6. FRAME AND LUGS TO BE FULLY WELDED FROM OUTSIDE ONLY.
7. ALL DIMENSIONS ARE SPECIFIED AS INTERNAL.

Drawing name: I:\Roads Shared\Standard Dwg Review 2007\SD5-13A.dwg (22 May, 2009)

Rev	Amendments	Approved	Date
B	Minor Drafting Modifications		17-05-07



**GRATE DETAIL  
FOR SM2 KERB**

Engineering Services Approval No.: ES001

Date: 21/05/09

Cad File: SD5-13A.DWG

Drawn Date: 02/02/09

Revision: B

Drawing No.

**SD5-13A**

GENERAL NOTES:  
 -DRAWINGS ARE NOT TO SCALE.  
 -ALL MEASUREMENTS ARE IN MILLIMETERS UNLESS OTHERWISE STATED.  
 -FOR UP TO DATE DRAWINGS PLEASE CHECK WYNDHAM CITY COUNCIL WEB SITE.  
 -ALL STANDARD DRAWINGS TO BE USED IN CONJUNCTION WITH SD1-1 (STANDARD CONDITIONS OF USE).