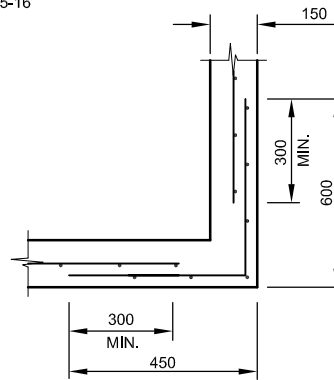


PITS UP TO 3600 DEPTH



CORNER DETAILS (PLAN VIEW)

PIT LENGTH "L"	REINFORCEMENT
UP TO 1200	SL 92
1201 - 1800	RL 918
1801 - 2400	RL 1218

REINFORCEMENT DETAILS

NOTES :

1. WIDTH OF HAUNCHING TO BE DETERMINED BY PIPE SIZE.
2. PIT INTERNAL DIMENSIONS: MINIMUM 900mm x 600mm.
3. PITS WITH HAUNCHING IN TWO DIRECTIONS REQUIRE APPROVAL FROM WYNDHAM CITY COUNCIL'S MANAGER, ENGINEERING SERVICES.
4. PITS 1500mm DEEP OR GREATER REQUIRE REINFORCMENT.
5. PIT REINFORCEMENT TO BE IN ACCORDANCE WITH TABLE MESH IN SHAFT TO HAVE THE MAIN BARS POSITIONED HORIZONTALLY. LAPS TO BE 300mm MINIMUM COVER TO BE 50mm CORNER RETURN REINFORCEMENT TO BE FABRIC OR EQUIVALENT BARS.
6. PITS DEEPER THAN 1000mm TO BE FITTED WITH STEP IRONS AS PER SD5-7.
7. FOR TOP OF PIT DETAILS, REFER TO PIT SCHEDULE AND RELEVANT STANDARD DRAWINGS.
8. COUNCIL APPROVAL MUST BE OBTAINED FOR THE USE OF PRECAST PITS. THE SUPPLIER MUST DEMONSTRATE THAT THE PITS HAVE ADEQUATE CAPACITY TO SUPPORT A COMBINATION OF THE FOLLOWING :
 LATERAL LOADS - EARTH PRESSURE WITH 210 KN SURCHARGE
 VERTICAL LOAD - 210 KN
 - HYDROSTATIC PRESSURE
 - COMPACTION PRESSURE (25KPa MIN.)
9. ALLOWANCE TO BE MADE FOR SUB-SURFACE DRAINS AS SPECIFIED.
10. CONCRETE STRENGTH TO BE 25 MPa.

Drawing name: I:\Roads Shared\Standard Drawings May 2009\AutoCad Version\SD5-10.dwg (01 Jun, 2009)

Rev	Amendments	Approved	Date
B	Minor drafting modifications		28-05-07



STORM WATER JUNCTION PIT FOR PIPES OVER 600mm DIAMETER AND 3600mm MAX DEPTH		Cad File : SD5-10.DWG
		Drawn Date : 02/02/09
		Revision : B
		Drawing No.
Engineering Services Approval No.: ES001	Date: 21/05/09	SD5-10

GENERAL NOTES: -DRAWINGS ARE NOT TO SCALE.
 -ALL MEASUREMENTS ARE IN MILLIMETERS UNLESS OTHERWISE STATED.
 -FOR UP TO DATE DRAWINGS PLEASE CHECK WYNDHAM CITY COUNCIL WEB SITE.
 -ALL STANDARD DRAWINGS TO BE USED IN CONJUNCTION WITH SD1-1 (STANDARD CONDITIONS OF USE).