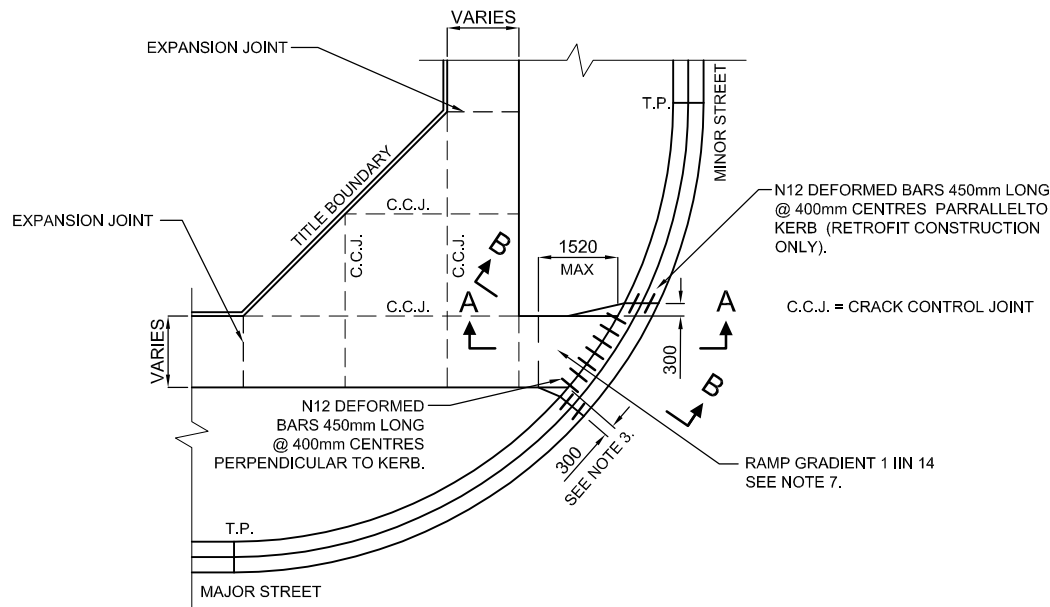
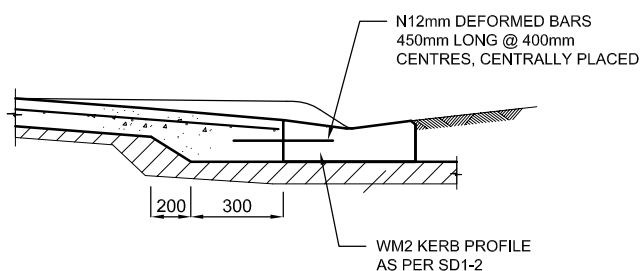


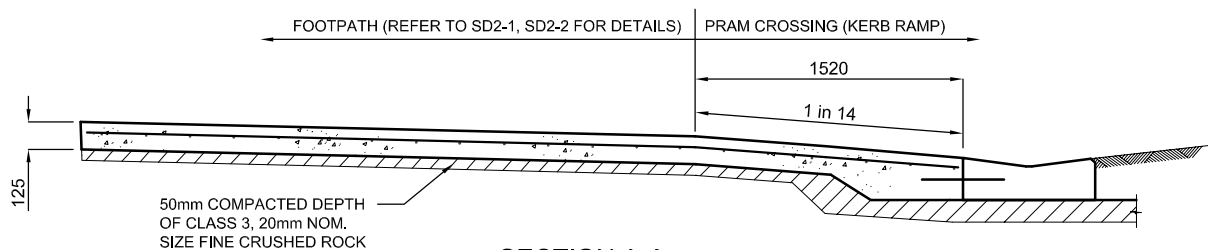
Drawing name: I:\Roads\Shared\Standard Drawings_May 2009\AutoCad_Version\SD3-1.dwg (02 Sep, 2009)



PLAN



SECTION B-B



SECTION A-A

NOTES :

1. CONCRETE IS TO BE 25 MPa AT 28 DAYS.
2. ALL FINISHED SURFACES MUST COMPLY WITH AS 4586 - SLIP RESISTANCE CLASSIFICATION OF NEW PEDESTRIAN SURFACE MATERIALS.
3. SPLAYS TO BE 300mm WITH KERB TRANSITION.
4. CONCRETE TO BE LIGHT BROOM FINISH, UNLESS OTHERWISE SPECIFIED, WITH EDGES AND JOINTS NEATLY TOOLED AFTER THE BROOM IS APPLIED.
5. EXPOSED AGGEGATE SURFACE FINISH TO BE ACHIEVED BY SANDBLASTING AFTER AT LEAST 48 HOURS OF CURING TIME.
6. TACTILE GROUND SURFACE INDICATORS (TGSi's) TO BE INSTALLED AS SPECIFIED. TGSi'S MUST COMPLY WITH AS1428.4 AND MUST BE APPROVED BY WYNDHAM CITY COUNCIL'S TRAFFIC ENGINEER.
7. CROSSING TO BE AT RIGHT ANGLES TO ROAD CARRIAGEWAY, ALLIGNED WITH OPPOSITE PRAM CROSSING AND WITH A DIRECT PATH OF TRAVEL.
8. WHERE PERMISSION IS GRANTED TO USE COLOURED CONCRETE STRENGTH TO BE 32MPa.

Rev	Amendments	Approved	Date
B	Deleted Note 01, edited Notes 01, 07, 08 & 09. Minor drafting modifications.		19-06-07
C	Added Note 8.		01-09-09



PRAM CROSSING DETAILS

Engineering Services Approval No.: ES002

Date: 01/09/09

Cad File : SD3-1.DWG

Drawn Date : 02/02/09

Revision : C

Drawing No.

SD3-1

GENERAL NOTES: -DRAWINGS ARE NOT TO SCALE.
 -ALL MEASUREMENTS ARE IN MILLIMETERS UNLESS OTHERWISE STATED.
 -FOR UP TO DATE DRAWINGS PLEASE CHECK WYNDHAM CITY COUNCIL WEB SITE.
 -ALL STANDARD DRAWINGS TO BE USED IN CONJUNCTION WITH SD1-1 (STANDARD DRAWINGS CONDITIONS OF USE).