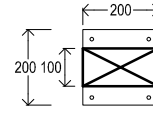


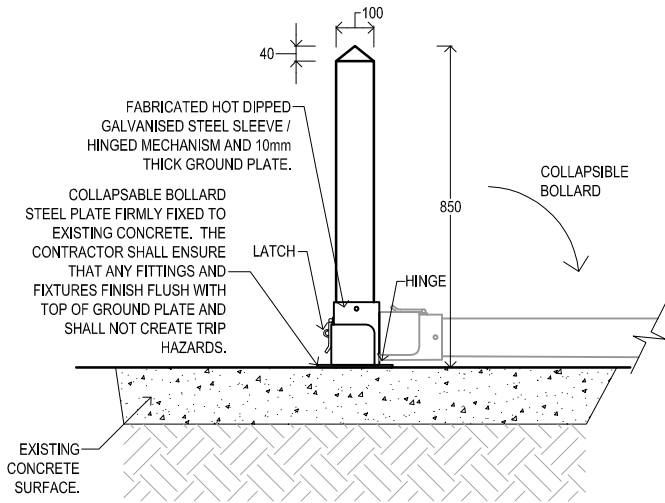
PLAN VIEW

NOTES:

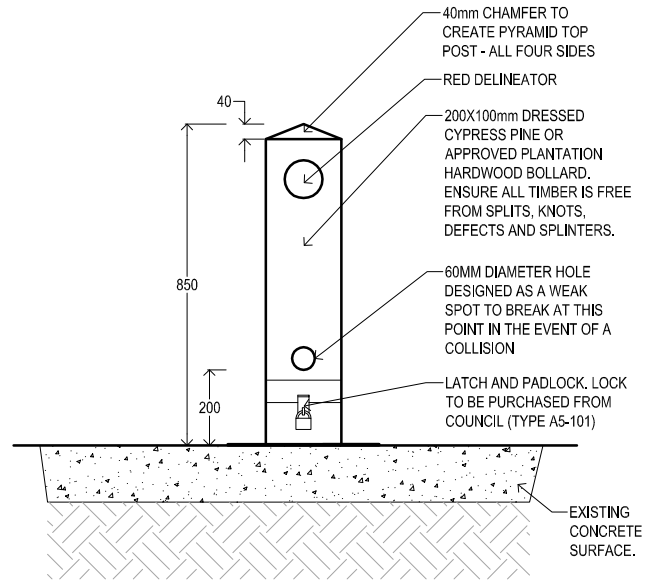
1. BOLLARDS TO BE OFFSET AT LEAST 1000mm FROM BACK OF KERB.
2. ALL DIMENSIONS ARE IN MILLIMETRES.
3. CONCRETE STRENGTH OF 25MPa AT 28 DAYS.
4. BOLLARDS ARE TO BE INSTALLED WITH HOLES FACING PERPENDICULAR TO THE ROAD.



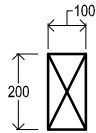
PLAN VIEW



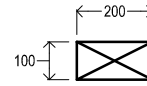
SIDE ELEVATION



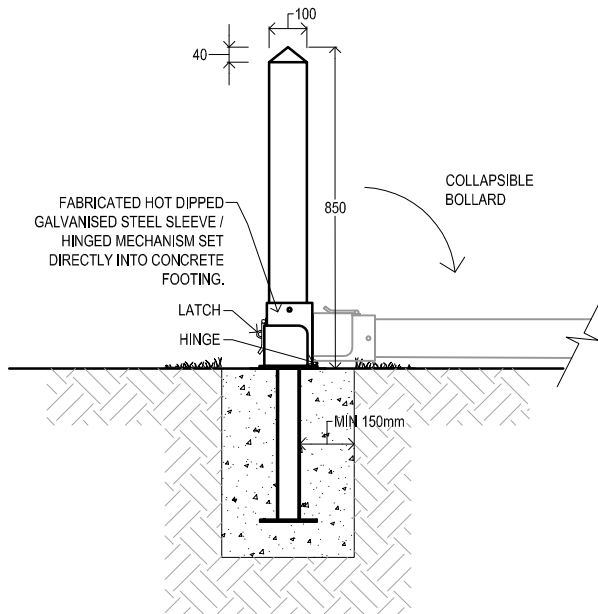
FRONT ELEVATION



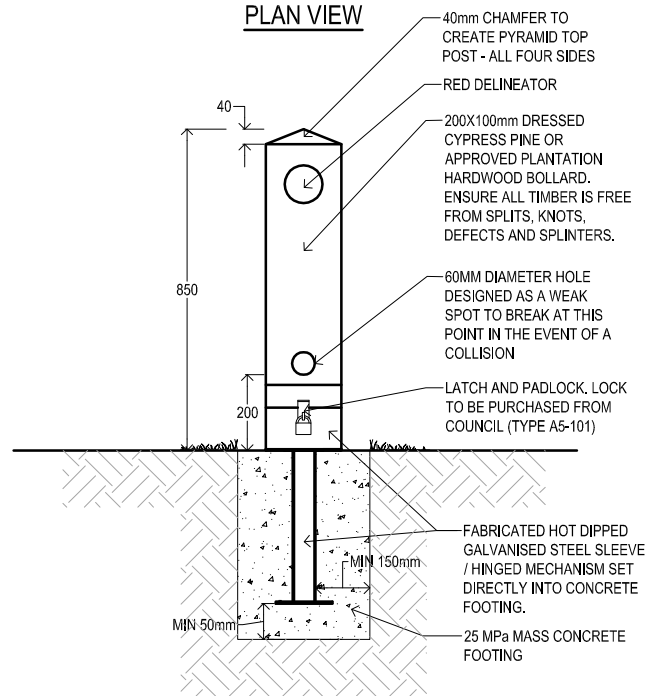
PLAN VIEW



PLAN VIEW



SIDE ELEVATION



FRONT ELEVATION

DRAWING & SPECIFICATION FOR BOLLARDS PRODUCED BY WYNDHAM CITY COUNCIL'S CITY PRESENTATION DEPARTMENT

Drawing name: I:\Roads Shared\Standard Drawings May 2009\AutoCad Version\SD10-1.dwg (11 Feb. 2010)

Rev	Amendments	Approved	Date
C	Added note 4		12-01-10



**COLLAPSABLE BOLLARD
DETAIL**

Engineering Services Approval No.: ES001 Date: 21/05/09

Cad File: SD10-1.DWG
Drawn Date: 02/02/09
Revision: C
Drawing No. SD10-1

GENERAL NOTES:
 -DRAWINGS ARE NOT TO SCALE.
 -ALL MEASUREMENTS ARE IN MILLIMETERS UNLESS OTHERWISE STATED.
 -FOR UP TO DATE DRAWINGS PLEASE CHECK WYNDHAM CITY COUNCIL WEB SITE.
 -ALL STANDARD DRAWINGS TO BE USED IN CONJUNCTION WITH SD1-1 (STANDARD DRAWINGS CONDITIONS OF USE).