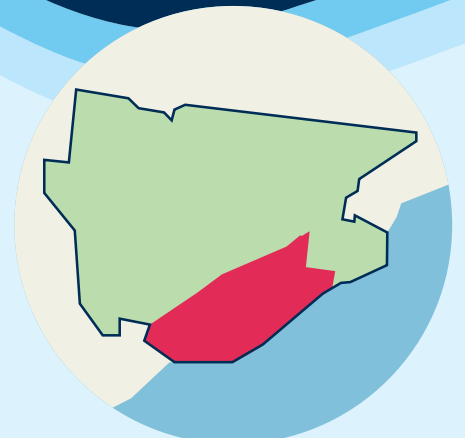
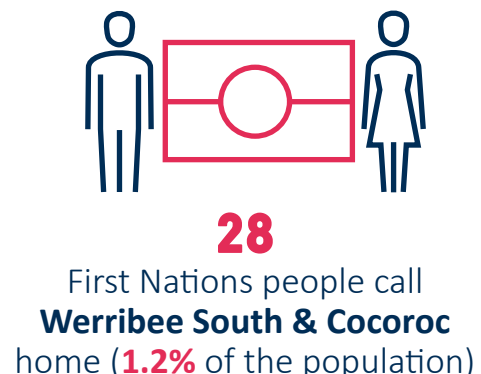
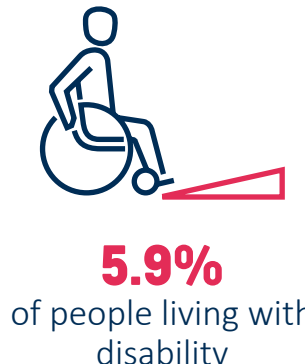
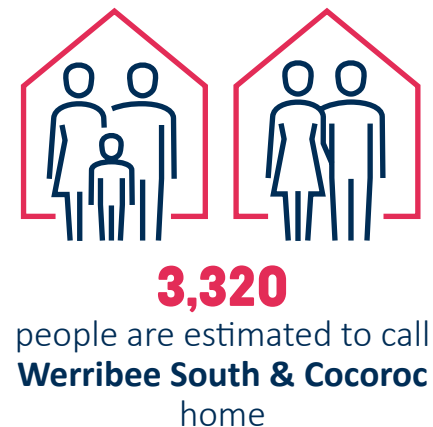


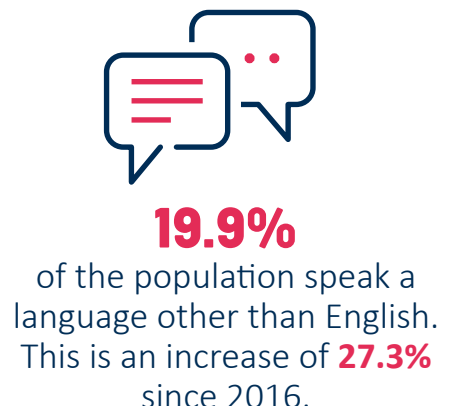
Werribee South - Cocoroc

People & Community



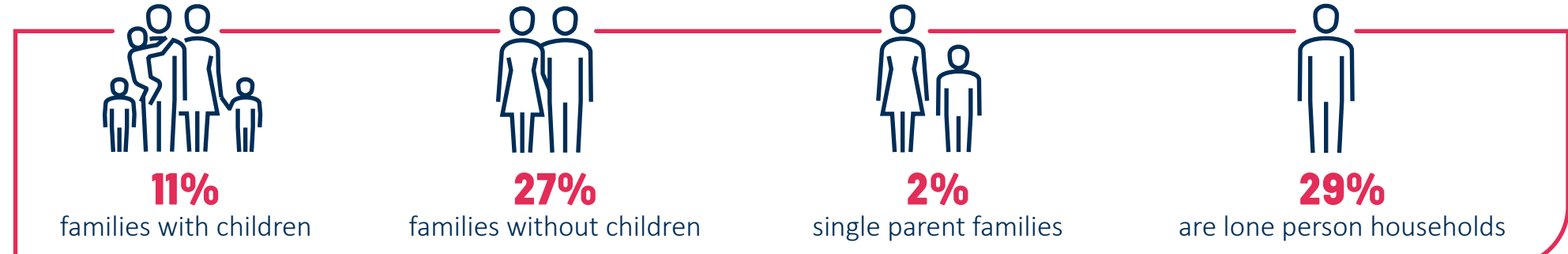
Werribee South - Cocoroc

Werribee South is located in the south east of Wyndham and is a large agricultural and tourist area of Wyndham, home to the Werribee Park Mansion and Gardens, Werribee Open Range Zoo and Wyndham Harbour. Cocoroc is located in the south area of Wyndham. This area is bounded by the Princes Freeway (Maltby Bypass) in the north, the RAAF Williams Point Cook Base in the east, Port Phillip Bay and the Little River in the south, and the locality of Point Wilson in the west.



- The Top Five languages spoken in **Werribee South & Cocoroc** other than English include:
- | | |
|---------------------|-------------------|
| 1 Italian | 4 Hindi |
| 2 Greek | 5 Mandarin |
| 3 Macedonian | |

- The Top Five religions identified in **Werribee South & Cocoroc** include:
- 1 Western (Roman) Catholic**
 - 2 Greek Orthodox**
 - 3 Anglican**
 - 4 Christian**
 - 5 Islam**



* Information provided is based on Australian Bureau of Statistics 2021 Census (ABS) data conducted on 10 August 2021.

Places & Spaces



1,049

households in **Werribee South & Cocoroc**. This is an increase of **35%** since 2016.



\$840,000

Median house price in **Werribee South & Cocoroc** as of September 2022

Housing is **15%** more affordable in **Werribee South & Cocoroc** than in Greater Melbourne



Dwellings with **3 bedrooms** were the most common for **Werribee South & Cocoroc**



37%

of residents fully own their home

24%

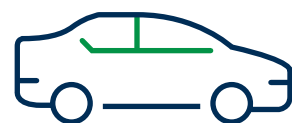
of residents have a mortgage over their home

27%

are renting privately

11.6%

of dwellings were unoccupied in 2021



86%

of people own a car

Earning & Learning



\$1,601

Is the median weekly household income in **Werribee South & Cocoroc**



\$2,127

Is the median monthly mortgage repayment for households in **Werribee South & Cocoroc**



\$350

Is the median weekly rental payment in **Werribee South & Cocoroc**



1,250

people participate in the labour force



16.6%

of people aged 15 years and over hold a formal qualification (bachelor or higher degree, advanced diploma or diploma, vocational qualifications)



3.3%

of people aged 15 years and over attend university

1.8%

of people aged 15 years and over attend a TAFE or vocational institution

7.6%

of young people aged 15-24 years old are disengaged with employment and /or education



17.2%

of people aged 15 years and over hold a vocational qualification



4.9%

of the **Werribee South & Cocoroc** population were unemployed as of June 2022



The Top Two modes of transport to work include:

- 1 Car - as driver**
- 2 Worked at home**

The working population of **Werribee South & Cocoroc** most commonly work for the following industries:

- 1 Construction**
- 2 Agriculture, Forestry and Fishing**
- 3 Health Care and Social Assistance**
- 4 Retail Trade**
- 5 Transport, Postal and Warehousing**