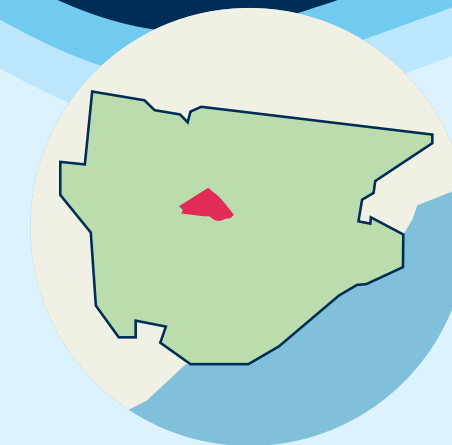
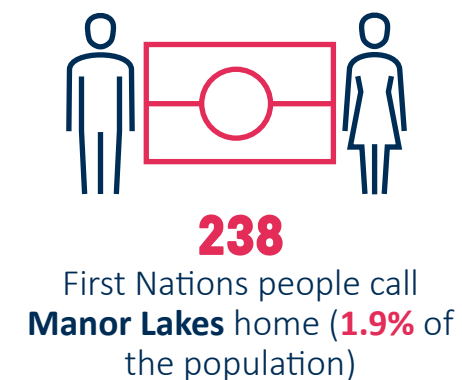
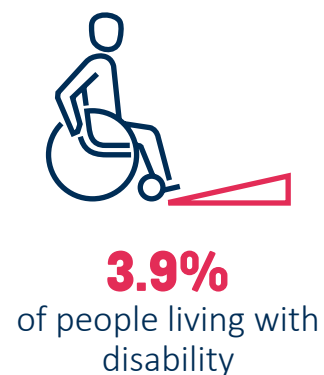
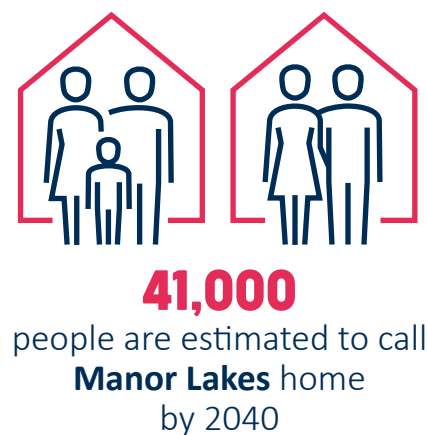


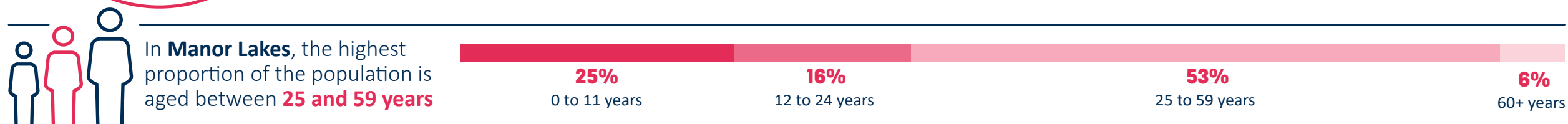
Manor Lakes

People & Community



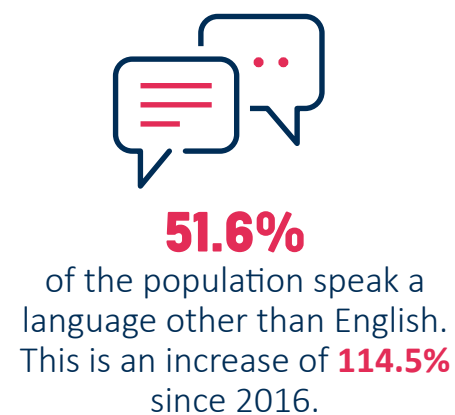
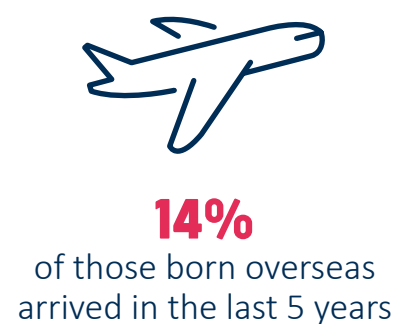
Manor Lakes

Manor Lakes is a growing suburb located in the north west area of Wyndham. Before 2016, Manor Lakes was a part of Wyndham Vale. Manor Lakes is bounded by Ballan Road in the north, the suburb of Quandong in the east, Greens Road in the south, and the suburb of Wyndham Vale in the west.



In **Manor Lakes** the Top Three long term health conditions reported are:

- 1 Asthma
- 2 Mental health condition
- 3 Diabetes

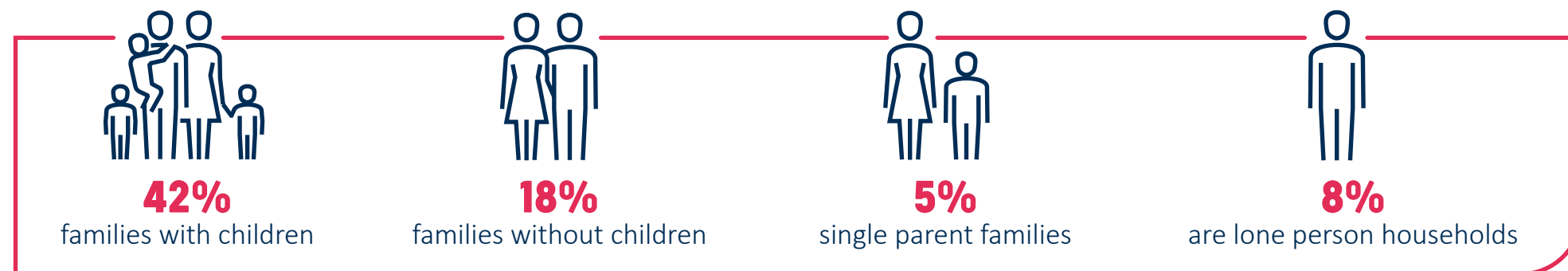


The Top Five languages spoken in **Manor Lakes** other than English include:

- | | |
|-----------|--------------------|
| 1 Hindi | 4 Tamil |
| 2 Punjabi | 5 Filipino/Tagalog |
| 3 Telugu | |

The Top Five religions identified in **Manor Lakes** include:

- 1 Hinduism
- 2 Western (Roman) Catholic
- 3 Islam
- 4 Sikhism
- 5 Anglican



* Information provided is based on Australian Bureau of Statistics 2021 Census (ABS) data conducted on 10 August 2021.

Places & Spaces



3,833

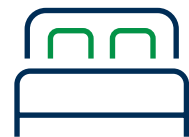
households in **Manor Lakes**.
This is an increase of **52%**
since 2016.



\$630,000

Median house price
in **Manor Lakes** as of
September 2022

Housing is **37%**
more affordable in **Manor
Lakes** than in Greater
Melbourne



Dwellings with **4
bedrooms** were the most
common for **Manor Lakes**



8%

of residents fully own
their home

62%

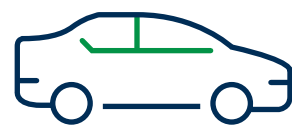
of residents have a mortgage
over their home

25%

are renting privately

5.4%

of dwellings were
unoccupied in 2021



93%

of people own a car

Earning & Learning



\$2,296

Is the median weekly
household income in **Manor
Lakes**



\$1,900

Is the median monthly
mortgage repayment for
households in **Manor Lakes**



\$360

Is the median weekly rental
payment in **Manor Lakes**



6,546

people participate
in the labour force



39.2%

of people aged 15 years
and over hold a formal
qualification (bachelor or
higher degree, advanced
diploma or diploma,
vocational qualifications)



4.1%

of people aged 15 years and
over attend university

2.8%

of people aged 15 years
and over attend a TAFE or
vocational institution

9.2%

of young people aged 15-24
years old are disengaged
with employment and /or
education



14.9%

of people aged 15 years
and over hold a vocational
qualification



6%

of the **Manor Lakes**
population were
unemployed as of
June 2022



The Top Two modes of
transport to work include:

- 1 Car - as driver**
- 2 Worked at home**

The working population
of **Manor Lakes** most
commonly work for the
following industries:

- 1 Professional, Scientific and Technical Services**
- 2 Health Care and Social Assistance**
- 3 Retail Trade**
- 4 Financial and Insurance Services**
- 5 Transport, Postal and Warehousing**